

TORTUGA — LEOPARD



Builder: LEOPARD

Year Built: 2016

Model: Catamaran

Price: PRICE ON APPLICATION

Location: United States

LOA: 48' 0" (14.63m)

Beam: 25' 1" (7.65m)

Max Draft: 4' 10" (1.47m)

Our experienced yacht broker, Andrey Shestakov, will help you choose and buy a yacht that best suits your needs **TORTUGA — LEOPARD** from our catalogue. Presently, at Shestakov Yacht Sales Inc., we have a wide variety of yachts available on our sale's list. We also work in close contact with all the big yacht manufacturers from all over the world.

If you would like to buy a yacht **TORTUGA — LEOPARD** or would like help answering any questions concerning purchasing, selling or chartering a yacht, please call **+1(954)274-4435**

TABLE OF CONTENTS

TABLE OF CONTENTS	2
SPECIFICATIONS	5
Overview	5
Basic Information	5
Dimensions	5
Speed, Capacities and Weight	6
Accommodations	6
Hull and Deck Information	6
Engine Information	6
DETAILED INFORMATION	7
Manufacturer Provided Description	7
Exclusions	7
Disclaimer	7
PHOTOS	8
1	8
2	8
3	8
4	8
6	8
5	8
7	9
8	9
9	9
10	9
11	9
12	9
14	10
13	10

15	10
16	10
17	10
18	10
19	11
20	11
22	11
21	11
24	12
23	12
25	12
26	12
27	13
28	13
29	13
30	13
31	13
32	13
34	14
33	14
35	14
36	14
37	14
38	14
39	15
40	15
41	15
CONTACTS	16
Contact details	16

Telephones	16
Office hours	16
Address	16

SPECIFICATIONS

Overview

"Tortuga" is offered as a well equipped Owners Version Leopard 48, undamaged by any storms. Ordered with the Setee in the Owners Stateroom (in lieu of storage), Tortuga is unlike most Leopard 48. She was delivered to Ft Lauderdale and upon commissioning, sailed throughout the Caribbean Basin and through the Panama Canal to the Galapagos, then back to the US, and up to Canada. After completing their cruising plans and sailing her back to Ft Lauderdale, Owners are ready to let another family continue the adventure.

Features Include: 220v Electrical System with a 110v Inverter for electrical, 9KW Northern Lights Generator (3190 hours), Upgraded 54 HP Yanmar engines, 2x Solar Panels, Custom cockpit cushions, Isinglass Helm Dodger, Forepeak berth, Setee in Owners Stateroom, 2x TVs, Fusion Stereo, Raymarine Electronics, Autopilot Remote, Raymarine Radar, 2.7kw Inverter, AGM House and Engine Batteries, 2x 12,000 BTU AC and 1x 16,000 BTU AC Units, Additional Refrigerator aft Cockpit, 2x Electric winches, Electric Flush Fresh/Salt Water toilets, Splendide Washer/Dryer, Hot/Cold Stern Shower, Deck Fresh water wash Down, 220v Icemaker, Electric Stainless Steel Davit System, Dinghy with 25hp motor, Some safety equipment and more... don't miss out on this great Leopard 48, she will not last long on the market!

** Located in Fort Lauderdale, Import Duty Paid, No Hurricane Damage **Photos taken March 2020 by listing broker

Basic Information

Category: Catamaran

Model Year: 2016

Year Built: 2016

Country: United States

Dimensions

LOA: 48' 0" (14.63m)

LWL: 45' 5" (13.84m)

Beam: 25' 1" (7.65m)

Max Draft: 4' 10" (1.47m)

Speed, Capacities and Weight

Gross Tonnage: 37478.58 Pounds

Water Capacity: 206.05 Gallons

Holding Tank: 44.91 Gallons

Fuel Capacity: 184.92 Gallons

Accommodations

Total Cabins: 3

Total Berths: 1

Total Heads: 3

Hull and Deck Information

Hull Material: Fiberglass

Engine Information

Engines: 2

Manufacturer: Yanmar

Engine Type: Inboard

Fuel Type: Diesel

DETAILED INFORMATION

Manufacturer Provided Description

Leopard Catamarans proudly introduces the award winning Leopard 48. Focused on blue water performance and comfortable living, the Leopard 48 is an exciting addition to the Leopard line.

EXTERIOR Like the award winning Leopard 44, the Leopard 48 features a large forward cockpit with direct access from the saloon, unique to the Leopard range. Other exterior bonuses include a large and open aft cockpit with cockpit table. A raised helm station, providing excellent panoramic visibility, allows for excellent blue water maneuverability.

INTERIOR The interior of the Leopard 48 provides both beauty and practicality. The galley comes equipped with top-of-the-line appliances, ample prepping space, and so much more. This catamaran also offers a plethora of interior space. The plush interior makes sailing not only fun, but also incredibly comfortable. Her modern lines and open floor plan set a new standard for the modern cruising catamaran.

Exclusions

Owner's personal belongings.

Disclaimer

The Company offers the details of this vessel or yacht in good faith but cannot guarantee or warrant the accuracy of this information nor warrant the condition of the vessel. A buyer should instruct his representatives, agents, or his surveyors, to investigate such details as the buyer desires validated. This vessel or yacht is offered subject to prior sale, price change, or withdrawal without notice.

PHOTOS

1



2



3



4



5



6



7



8



9



10



11



12



13



14



15



16



17



18



19



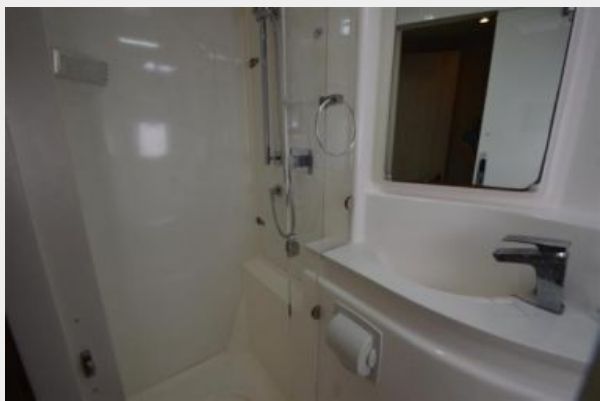
20



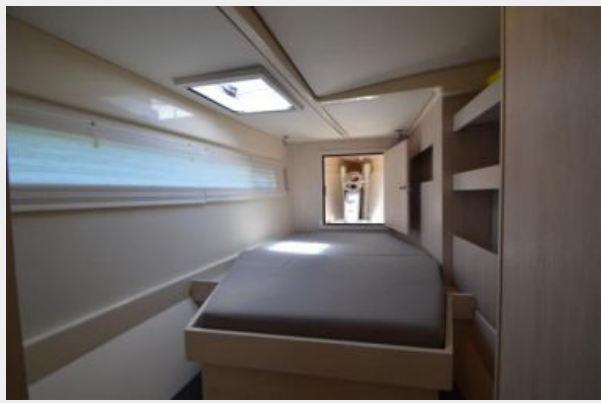
22



21



23



24



25



26



27



28



29



30



31



32



33



34



35



36



37



38



39



40



41



CONTACTS

Andrey Shestakov, leading yacht broker of the sales department of Shestakov Yacht Sales Inc. Shestakov Yacht Sales Inc., the official representative of the Miami/Fort Lauderdale FL headquarters.

Contact details

Email: andrey@shestakovyachtsales.com

Web: shestakovyachtsales.com/en/

Telephones

USA: +1(954)274-4435

Office hours

Monday – Saturday: **9:00 - 21:00** EDT

Sunday: **closed**

Address



Harbour Towne Marina, 850 NE 3rd St,
STE 213, Dania, FL 33004