

BURGER 1967 — BURGER



Builder: BURGER

LOA: 81' 0" (24.69m)

Year Built: 1967

Beam: 20' 6" (6.25m)

Model: Motor Yacht

Price: PRICE ON APPLICATION

Location: United States

Our experienced yacht broker, Andrey Shestakov, will help you choose and buy a yacht that best suits your needs **Burger 1967 — BURGER** from our catalogue. Presently, at Shestakov Yacht Sales Inc., we have a wide variety of yachts available on our sale's list. We also work in close contact with all the big yacht manufacturers from all over the world.

If you would like to buy a yacht **Burger 1967 — BURGER** or would like help answering any questions concerning purchasing, selling or chartering a yacht, please call **+1(954)274-4435**

TABLE OF CONTENTS

TABLE OF CONTENTS	2
SPECIFICATIONS	5
Overview	5
Basic Information	5
Dimensions	5
Speed, Capacities and Weight	5
Accommodations	5
Hull and Deck Information	5
Engine Information	6
DETAILED INFORMATION	7
Layout Overview	7
Disclaimer	9
Exclusions	9
Disclaimer	9
PHOTOS	10
2	10
3	10
5	10
4	10
6	10
7	10
8	11
9	11
10	11
11	11
12	11
13	11
14	12

15	12
16	12
17	12
18	12
19	12
20	13
21	13
22	13
23	13
24	13
25	13
26	14
27	14
28	14
29	14
30	14
31	14
32	15
33	15
34	15
35	15
36	15
37	15
38	16
39	16
40	16
41	16
42	16
43	16

44	17
45	17
46	17
47	17
48	17
49	17
50	18
51	18
52	18
CONTACTS	19
Contact details	19
Telephones	19
Office hours	19
Address	19

SPECIFICATIONS

Overview

Burger builds an exceptional yacht and it is no more evident than in this example "Jeanne Mary". With owners who have really understand what is to care for a vessel like this 'Jeanne Marie' has gone through an enormous amount of upgrades.

She's been fully painted (hull + topsides), repowered w/ extremely efficient John Deer engines, and recently had a new generator installed.

Other features and highlights:-3 Stateroom Layout + Crew Forward-20'6" Beam-Nouvarania Tender-Outdoor Kitchen in Cockpit-China Cabinet In Lower Salon

Basic Information

Category: Motor Yacht

Model Year: 1967

Year Built: 1967

Country: United States

Dimensions

LOA: 81' 0" (24.69m)

Beam: 20' 6" (6.25m)

Speed, Capacities and Weight

Fuel Capacity: 2000 Gallons

Accommodations

Total Cabins: 3

Hull and Deck Information

Hull Material: Aluminum

Engine Information

Engines: 1

Manufacturer: John Deere

DETAILED INFORMATION

Layout Overview

Cockpit

- Propane Grill
- Wet bar
- Storage
- L-Shaped Seating Area

Upper Salon

- Sunroom
- Full Bar
- Large Windows
- Bow and Sidedeck Access

Bow

- Ground Tackle
- Seating Area
- Two Galvanized Anchors
- Pulley System for anchors, toys or a tender

Pilothouse

- Ladder to access the bridge
- Sofa
- Helm Station.

Helm

- Twin Noveltech Displays
- 3D Charts and Radar
- Twin Engine Throttle Controls
- Brand New Gauges for 6.8L John Deere 330HP (2017)

Lower Salon

- Private Suite w/ incredible water views
- Mahogany Bar

- **Granite Countertops**
- **China Cabinet**
- **Stemware and Bottle Storage**
- **Washer and Dryer**
- **TV**
- **L-Shaped Seating Area**
- **Desk**

Galley

- **Double Basin Sink**
- **Full Size Refrigerator**
- **Freezer**
- **Microwave**
- **Four Burner Cooktop**
- **Dishwasher**
- **Oven**
- **Trash Compacter**

Crew

- **Over-Under Bunks**
- **Shower**
- **En Suite Head**

Port Guest

- **Twin Berths**
- **Pullman Bunk**

Starboard Guest

- **Twin Berths**
- **Pullman Bunk**
- **Ensuite Head w/ Shower**

Master Stateroom

- **Centerline Queen Berth**
- **Storage**
- **Rectangular Port Windows Both Port and Starboard**
- **En Suite**

Flybridge

- **Upper Helm**
- **Captains Chair**
- **Two Co- Pilots Chairs**
- **Bimini Top**
- **Radar Mast**
- **L Shaped Settee**
- **Open Air C-Shaped Seating Area**

Boat Deck

- **Nouvarania Tender**
- **Electric Winch**

Engine Room

- **John Deere 6.8 L Diesels**
- **Westerbeke 15kw Genset**
- *****NEW*** 16 Kw Northern Lights Genset**

Disclaimer

The Company offers the details of this vessel in good faith but cannot guarantee or warrant the accuracy of this information nor warrant the condition of the vessel. A buyer should instruct his agents, or his surveyors, to investigate such details as the buyer desires validated. Hours listed may vary from actual hours due to recent use. Purchaser is encouraged to verify hours prior to purchase. This vessel is offered subject to prior sale, price change, or withdrawal without notice.

Exclusions

Owner's personal belongings.

Disclaimer

The Company offers the details of this vessel or yacht in good faith but cannot guarantee or warrant the accuracy of this information nor warrant the condition of the vessel. A buyer should instruct his representatives, agents, or his surveyors, to investigate such details as the buyer desires validated. This vessel or yacht is offered subject to prior sale, price change, or withdrawal without notice.

PHOTOS

2



3



4



5



6



7



8



9



10



11



12



13



14



15



16



17



18



19



20



21



22



23



24



25



26



27



28



29



30



31



32



33



34



35



36



37



38



39



40



41



42



43



44



45



46



47



48



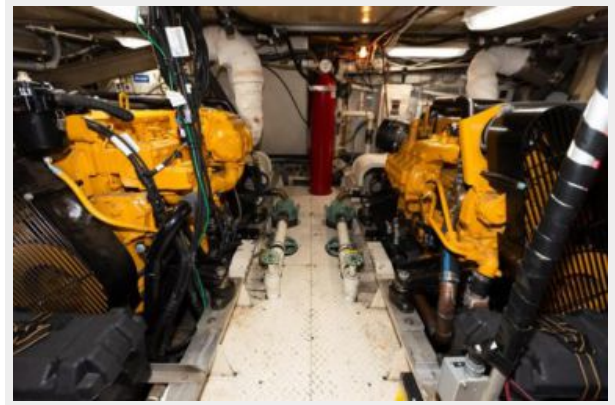
49



50



51



52



CONTACTS

Andrey Shestakov, leading yacht broker of the sales department of Shestakov Yacht Sales Inc. Shestakov Yacht Sales Inc., the official representative of the Miami/Fort Lauderdale FL headquarters.

Contact details

Email: andrey@shestakovyachtsales.com

Web: shestakovyachtsales.com/en/

Telephones

USA: +1(954)274-4435

Office hours

Monday – Saturday: **9:00 - 21:00** EDT

Sunday: **closed**

Address



Harbour Towne Marina, 850 NE 3rd St,
STE 213, Dania, FL 33004