

## CHESELLA — AMELS



**Судостроитель:** AMELS

**Год постройки:** 1983

**Модель:** Моторная яхта

**Цена:** **ЦЕНА ЯХТЫ ПО ЗАПРОСУ**

**Местонахождение:** United Kingdom

**Длина общая:** 124' 0" (37.80m)

**Ширина:** 23' 0" (7.01m)

**Макс. осадка:** 8' 8" (2.64m)

**Крейс. скорость:** 11 Kts. (13 MPH)

**Макс. скорость:** 12 Kts. (14 MPH)

Купить **CHESELLA — AMELS** а также выбрать подходящую вам яхту из нашего каталога яхт вам поможет опытный яхтенный брокер Андрей Шестаков. На сегодняшний день компания **Shestakov Yacht Sales Inc.** имеет большое количество яхт в **собственном списке продаж**, а также тесно сотрудничает со всеми крупными яхтенными производителями по всему миру.

Для того чтобы купить яхту **CHESELLA — AMELS** а также проконсультироваться по любому вопросу связанному с покупкой, продажей, чартером яхт позвоните по телефону **+7(918)465-66-44**.

# ОГЛАВЛЕНИЕ

ОГЛАВЛЕНИЕ	2
ХАРАКТЕРИСТИКИ	6
Обзор	6
Основная информация	7
Размеры	7
Скорость, вместимость и масса	7
Размещение	7
Корпус и палуба	7
Информация о двигателе	7
ПОДРОБНОЕ ОПИСАНИЕ	8
Description	8
Notable Refit Details	8
Overview	9
Entertainment	10
Communications Systems	11
Construction	11
Navigation Equipment	11
Water Sports and Equipment	11
History	12
Exclusions	13
Исключения	13
Отказ от ответственности	14
ФОТОГРАФИИ	15
2	15
3	15
4	15
5	15
6	15

7	15
8	16
9	16
10	16
11	16
12	16
13	16
14	17
15	17
16	17
17	17
18	17
19	17
20	18
21	18
22	18
23	18
24	18
25	18
26	19
27	19
28	19
29	19
30	19
31	19
32	20
33	20
34	20
35	20

36	20
37	20
38	21
39	21
40	21
41	21
42	21
43	21
45	22
44	22
46	22
47	22
48	22
49	22
50	23
51	23
52	23
53	23
54	23
55	23
56	24
57	24
58	24
59	24
60	24
61	24
62	25
63	25
64	25

65	25
Chesella GA Plans	25
66	25
КОНТАКТЫ	26
Контактная информация	26
Телефоны	26
Время работы	26
Адрес	26

# ХАРАКТЕРИСТИКИ

## Обзор

Built by Amels, this classic super yacht has proven that excellent craftsmanship and regular maintenance can stand the test of time. After emerging from the shipyard, M/Y CHESELLA has plenty of new features and improvements most notably:

- Completely new sun deck featuring a Jacuzzi with a large lounging area and a covered bar area aft.
- New outdoor dining area, day head, pantry and sky lounge, plus the addition of a 6th guest cabin with office space.
- New sound systems, Lutron lighting system and 4 new Samsung smart TVs for the sky lounge, Master suite and VIP staterooms.
- New drop-down swim platform, loungers and shower in the beach club.
- New garage for the new jet ski.

Featuring naval architecture from Diana Naval Architects, luxury yacht CHESELLA has a beautifully designed exterior with a shallow draft for close beach access. Since her update, the tenders have moved onto the bow providing plenty of room for alfresco dining, sunbathing and lounging on the upper deck. The sundeck is arguably the best outdoor entertainment space on board, where guests can soak in the forward Jacuzzi and take in the surrounding views.

Plush armchairs and sumptuous sun pads along the stern will tempt owners to remain here all day – or all night – for relaxation or to host a party for their guests.

Inside, the refit has remained true to her origins while giving a refreshing update to her furnishings: Warm wooden paneling adds to the atmosphere of the formal dining area and lounges, the crisp blue and white furnishings add elegant color to complement the grey and white tones found in the fixtures and fittings.

There is a great selection of water toys on board to make use of the fantastic beaches you will visit on your travels, and the collection includes:

- 16' Williams Jet Tender
- 1 x Yamaha Waverunner deluxe edition
- 2 x Paddleboards
- Inflatable toys
- Fishing equipment

The accommodations sleep up to 12 guests over 6 en-suite cabins: 1 Master suite, 1 VIP stateroom, 1 double cabin, 2 twin cabins each with a Pullman berth and 1 bunk cabin.

Основная информация

Тип судна: Моторная яхта	Модельный год: 1983
Год постройки: 1983	Страна: United Kingdom

Размеры

Длина общая: 124' 0" (37.80m)	Ширина: 23' 0" (7.01m)
Макс. осадка: 8' 8" (2.64m)	

Скорость, вместимость и масса

Крейс. скорость: 11 Kts. (13 MPH)	Макс. скорость: 12 Kts. (14 MPH)
-----------------------------------	----------------------------------

Размещение

Всего кают: 6	Всего коек: 9
Всего ком. состава: 6	

Корпус и палуба

Материал корпуса: Steel
-------------------------

Информация о двигателе

Двигатели: 2	Производитель: Caterpillar
Модель: 3412	Тип двигателя: Inboard
Тип топлива: Diesel	

# ПОДРОБНОЕ ОПИСАНИЕ

---

## Description

---

Chesella was built by the famous Amels shipyard and a recent major refit has brought this 124' motor yacht up to the highest standards.

Chesella is elegant and well proportioned and accommodates up to 12 guests in six cabins in an arrangement that features a full-beam master suite, two VIP Suites and two twin cabins - each with an additional Pullman berth. There is also a sixth bunk cabin providing accommodation suitable for both adults and children.

Chesella's interior, completely refurbished using the finest fabrics from Ralph Lauren and other leading designers, creates a state-of-the-art, contemporary yet classic feel throughout the salon and the formal, 12 person, dining area. Chesella's sky lounge and snug area offers a great vantage point for enjoying the scenery in climate-controlled comfort.

Over her four decks, Chesella also offers a variety of outdoor spaces. The large main deck is covered and the bridge deck aft area, with its large bank of cushioned seating, is perfect for more casual alfresco dining. The sun deck features a Jacuzzi, outdoor bar facilities and a large cushioned lounge area to aft.

From the aft, the transom door drops down to form a bathing platform on the lower deck. Guests can access the water easily and enjoy moments of contemplation relaxing on the loungers at the water's edge. Chesella also has a wide selection of water toys, which include a Wave Runner jet ski, diving and fishing gear, stand up paddle boards, as well as an array of inflatables that can be towed behind her 17' tender. Chesella is the perfect yacht for a number of families wanting to travel together in comfort and luxury.

## Notable Refit Details

---

Chesella underwent an extensive refit in 2017/2018 which saw many additions to the yacht. Most notable are the complete reconfiguration of the bridge deck and sun deck and the addition of the transom door.

The movement of the tenders from the bridge deck aft allowed for an aft extension, internally adding a 6th guest cabin, reconfigured captain's cabin, sky lounge sitting area, pantry and day-head. Externally a new partly covered dining area with a bank of lounge seating was introduced, perfect for more casual al-fresco dining.

The sun deck now has a new 8-person jacuzzi, extensive lounge sun bed area and large social bar area which makes for a fantastic all-day entertaining space.

The transom door fitted during the same period transformed the aft end of the boat, allowing



space for loungers and easy access to the water and tenders. There is a wide selection of water toys including, Yamaha wave runner jet ski, 16' Williams Jet Tender, fishing equipment, stand up paddle boards and an array of tow-able inflatable toys.

The interior space was elegantly renovated retaining the original classic feel while upgrading soft goods and fittings from leading designers such as Ralph Lauren and Porta Romana giving her a classic yet contemporary feel. A state-of-the-art Lutron lighting system was added across the main deck, bridge deck and sun deck allowing mood light settings throughout.

The on-board guest accommodation now comfortably sleeps 12 guests across 6 cabins. One full-beam master suite, two VIP suites and two twin cabins. There is also a sixth bunk cabin providing accommodation suitable for both adults and children. Each cabin is equipped with smart TV's, Apple TV and Bluetooth speakers. The main salon, featuring a formal 12-person dining area, large, intimate seating area, and sky lounge which also feature smart TV's. WiFi and internal phone system run throughout the yacht.

Along with the visual renovations, the engineering spaces were all given a thorough service and flag inspection was carried out during the works and post the launch.

During the winters of 2018/2019 further investment was put into the engineering of the yacht. All pumps and valves were removed, serviced and reinstalled. The air conditioning system was fully upgraded throughout the yacht. Engines and generators were removed from the yacht, fully reconditioned, serviced and reinstalled as new.

The current winter yard works are now underway in Spain. This includes the cleaning and servicing of all tanks, removal and re-installation of the rudders, realignment and re-rolling of the shafts as well as general out of water maintenance and small electrical and engineering fixes. This will all be completed by the end of February 2020 with a look to relaunch March 2020, in preparation for the summer Med season.

## Overview

---

### OVERVIEW

Name: CHESELLA Yacht Type: Motor Yacht Class: Lloyds A100A1 LMC + MCA Builder: Amels B.V. Holland Exterior Designer: Diana Yacht Design B.V Interior Designer: Adam Lay Studio

### DIMENSIONS

Length Overall: 38.00 m / 124 ft Beam: 7.00 m / 23 ft Max Draft: 2.60 m / 8 ft 60 in Gross Tonnage: 245

### CONSTRUCTION

Builder: Amels B.V. Holland Year of Build: 1983 Year of Refit: 2018

## PERFORMANCE & CAPACITIES

Max Speed: 12 Knots (approx.) Cruising Speed: 10 Knots (approx.) Range (nm): 3200

## ENGINES

Engines: 2 x CAT 425 HP Generators: 2 Caterpillar 3304 (85 Kw)

## MATERIALS

Hull: Steel

## ACCOMMODATION

Guests: 12 Cabins: 6 Crew: 7

## EXTERIOR DESIGN

Designed by: Diana Yacht Design B.V.

- Williams Diesel Jet Tender 505
- 1 Yamaha Wave Runner ed-deluxe
- 2 x stand-up Paddle Boards
- Inflatable Toys
- Fishing Equipment

## Entertainment

---

- Globalstar 'Satellite TV at Sea' tracking antenna and distribution.
- Sonos Audio-On-Demand (AOD) System - central digital storage of music on a network server allows 'On-Demand' playing of the music at various locations onboard, controlled with radio remotes displaying album information. The system is able to play different music in any area at the same time or play in Party Mode - the same music in all areas.

## Main Salon

- Bose Lifestyle surround-sound with CD/DVD player and 42-inch Panasonic plasma display. Satellite receiver and connection for games console to play through TV. Music from central Sonos AOD system.

## Master Suite

- Bose Lifestyle surround-sound with CD/DVD player, satellite receiver and 42-inch Panasonic plasma display. Music from central Sonos AOD system. Audio in bathroom with own volume control

---

## Guest Cabin 1

- CD and DVD player with stereo sound and LCD flat screen TV. Audio in bathroom with own volume control

## Guest Cabins 2,3 and 4

- CD and DVD player with stereo sound and LCD flat screen TV

## Exterior - Maindeck, Boatdeck and Sundeck

- Music from central Sonos AOD system or satellite receiver, controlled with radio remote and played through speakers in deckhead

---

## Communications Systems

- KVH Mini V-Sat VOIP Telephone/Fax Thrane & Thrane FB250 Sat Telephone/Fax Sailor Iridium Sat Telephone
- ICS Nav5 GMDSS Navtex
- Smart Bridges Intelligent WiFi Nexus Platform Polestar DSAS-L security system
- Furuno RB-2721 VHF Radio Phone Furuno Felcom12 Inmarsat C

---

## Construction

Steel Hull, Aluminum Superstructure

---

## Navigation Equipment

- Philips AP GPS Navigator
- Anschutz Gyro Compass/Auto Pilot Furuno Arpa Marine Radar
- Furuno Navnet VX2 Marine Radar Nobeltec C-Map Chart Plotter Furuno FI-30 Multi control x 2 Furuno FI-30 Wind Data
- Furuno FA-150 Universal AIS Furuno SC-50 Satellite Compass
- Furuno GP-37 Dgps/Waas Navigator Probe Interphase forward looking Sonar

---

## Water Sports and Equipment

- 8 person jacuzzi on sundeck

- Williams Diesel Jet Tender 505
- 1 Yamaha GX1800 Waverunner
- 2 x Stand Up Paddleboards
- Inflatable toys
- Fishing equipment

## History

Looking at the 124' CHESELLA today, she appears to be a completely new motor yacht with her gleaming royal blue hull and pristine interiors.

When Amels decided to start building yachts instead of commercial ships this was one of its first big projects. Designed by the Diana studio, this well-built 120' steel motor yacht was launched at Amels' Makkum shipyard. This was a very successful charter yacht that appeared on the top of many leading Charter Broker's lists. Her present condition is a tribute to the continuous and careful process of maintenance and upgrading that has taken place over the years, and to a two-stage major refit commissioned by her current owner in 2017. In fact, the amount of work that has been devoted to this yacht over her lifetime is staggering, and almost all of it has been carried out in Palmaby the Astilleros de Mallorca yard with the finest attention to detail and quality workmanship at every level.

British designer Adam Lay Studio was asked to transform the interior. It was to be achieved by taking different style elements from their elegant homes and reinterpreting them in an appropriate and practical manner afloat. Having just bought the yacht, they naturally did not want it to disappear into the shipyard for many months, so it was agreed that the work would be scheduled in two phases, the first of which began in December 2004. Vessels with Lloyd's classification must undergo a full condition survey every five years, and since this involves delving deep into the mechanical areas, owners often take the opportunity to carry out necessary repairs and updates during the winter of 2002-2003.

She emerged in good technical condition and resumed work as a charter yacht, but then came an event that occurs frequently in this industry - a charterer and his wife took a liking to her and offered to buy her, with the intention of restoring the yacht for their private use and carrying out a major interior refit to their personal taste.

All new equipment included a revised fire-extinguishing system in the engine room, new water softener, additional freezer space, an air-handling unit, an oily water separator, a hot-water boiler, a Watermaker and a complete Hamann sewage treatment plant. At the same time the galley was gutted and rebuilt in stainless steel with top-of-the-range equipment.

The main interior rooms feature elegant teak paneling with new sofas, carpets and overheads, using white and navy as the principal colors. New lighting with flambeau lamps on wall brackets adds drama while plain wooden deck beams emphasize maritime elegance. The main and bridge decks were redone with moveable tables, chairs and loungers which could be arranged in

different ways for relaxing or dining. With new lighting and a good quality sound system, these outdoor areas have become favorite places for guests in warm weather while the ever-popular sundeck has also received updated upholstery and furniture, together with a delightful new spa pool.

Situated beyond a glass screen etched with a map of the Mediterranean, the dining room is the most luxurious space on board. The dining table was custom made in Italy using burl cherry with ebony bands and is a beautiful setting for the yacht's custom tableware. The room features beveled mirror panels on the forward bulkhead and the entrance hallway has new decking and a bold marquetry logo near the starboard-side access from the deck.

The owners' suite has an intimate seating area and cabinet with a flat-screen TV inside. To port is a bar cabinet in the style and color of the cherrywood.

The lower deck features a completely remodeled full-beam VIP cabin, which may be the nicest cabin on board.

As part of the refurbishment, new televisions and a new sound system were installed. The equipment includes Bose surround-sound CD/DVD players, a satellite receiver and plasma screen TV in the Salon, while a Sanos audio-on-demand system stores a vast range of music.

A crucial part of the refit was a complete exterior repaint. Awlgrip "Flag Blue" was used for her hull.

Returned to Palma for the second phase of the refurbishment, all her bathrooms were gutted and rebuilt using cherry wood in a classic raised and fielded joinery style. The contractor tailor made interiors with special care to achieve the same color of woodwork throughout so that the interior looks consistent. Large mirrors were installed, together with pale Corian counters, heated towel rails and THG taps. In addition, the owner's bathroom now has Lambeau lights like the main saloon, a full-sized, double sinks and a separate shower with a steam.

The yacht's bridge deck, bridge, communications room and captain's cabin were all remodeled. The bridge was given a complete technical makeover in which the latest electronic equipment was installed. The captain's cabin was brought up to a modern standard in keeping with the rest of the yacht.

---

## Exclusions

Comitti chase boat "THUMPER" not included in sale.

---

## Исключения

При продаже яхты исключаются личные вещи владельца.

## Отказ от ответственности

---

Компания предоставляет описание судна или яхты добросовестно, но не может гарантировать точность этой информации, а также не ручается за техническое состояние. Покупатель должен проинструктировать своих агентов или оценщиков исследовать представленную информацию более подробно, по собственному желанию. Продажа судна или яхты, изменение цены или снятие с продажи будет происходить без предварительного уведомления.

# ФОТОГРАФИИ

2



3



4



5



6



7





8



9



10



11



12



13

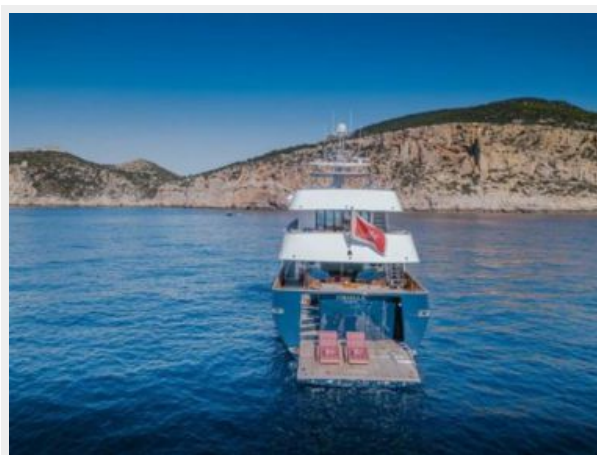




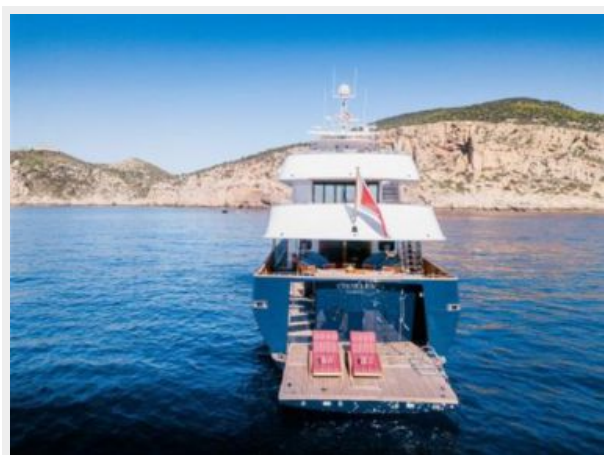
14



15



16



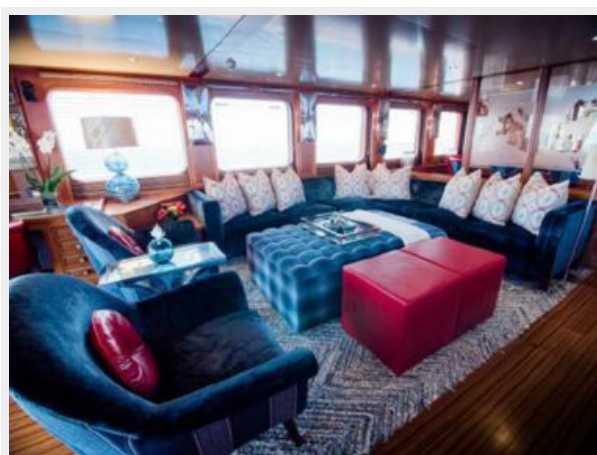
17



18



19



20



21



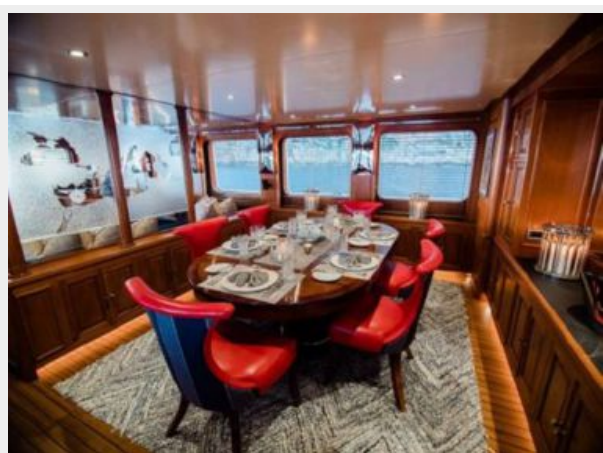
22



23



24



25





26



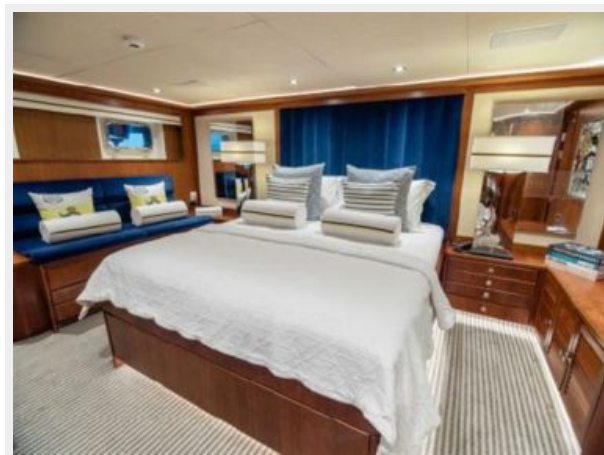
27



28



29



30



31



32



33



34



35



36



37





38



39



40



41



42



43



44



45



46



47



48



49





50



51



52



53



54



55



56



57



58



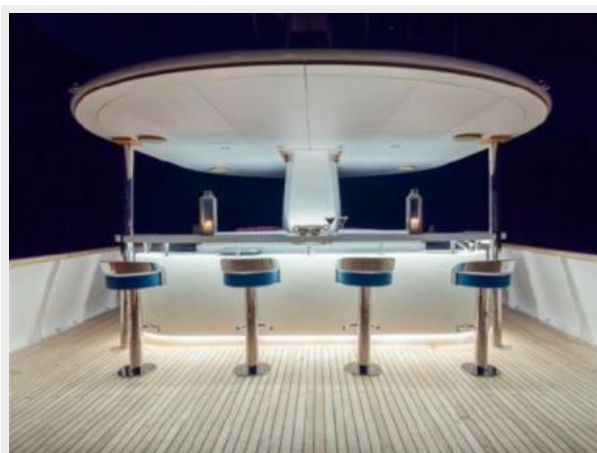
59



60



61





62



63



64

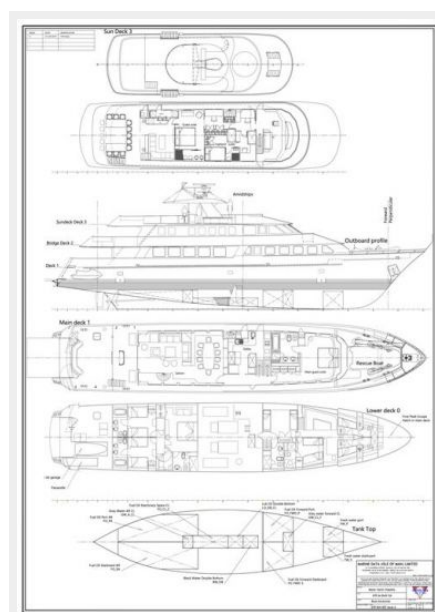


65



### Chesella GA Plans

66



# КОНТАКТЫ

---

Андрей Шестаков (Andrey Shestakov) – ведущий яхтенный брокер отдела продаж яхт и судов компании Shestakov Yacht Sales Inc. Официальный представитель Shestakov Yacht Sales Inc. для русскоговорящих клиентов в центральном офисе компании в Майами/Форт Лодердейл/Флорида/США.

## Контактная информация

---

Email: **andrey@shestakovyachtsales.com**

Web: **[shestakovyachtsales.com](http://shestakovyachtsales.com)**

## Телефоны

---

Краснодарский край: **+7(918)465-66-44**

США, Майами, Флорида: **+1(954)274-4435**

## Время работы

---

Понедельник – Суббота: **9:00 - 21:00**  
EDT

Воскресенье: **Закрито**

## Адрес

---



Harbour Towne Marina, 850 NE 3rd St,  
STE 213, Dania, FL 33004