

IREN — PRINCESS YACHTS



Судостроитель: PRINCESS YACHTS

Год постройки: 2009

Модель: Cruising Yacht

Цена: ЦЕНА ЯХТЫ ПО ЗАПРОСУ

Местонахождение: Turkey

Длина общая: 74' 11" (22.83m)

Ширина: 18' 9" (5.71m)

Мин. осадка: 5' 3" (1.60m)

Купить IREN — PRINCESS YACHTS а также выбрать подходящую вам яхту из нашего каталога яхт вам поможет опытный яхтенный брокер Андрей Шестаков. На сегодняшний день компания Shestakov Yacht Sales Inc. имеет большое количество яхт в собственном списке продаж, а также тесно сотрудничает со всеми крупными яхтенными производителями по всему миру.

Для того чтобы купить яхту IREN — PRINCESS YACHTS а также проконсультироваться по любому вопросу связанному с покупкой, продажей, чартером яхт позвоните по телефону **+7(918)465-66-44**.

ОГЛАВЛЕНИЕ

ОГЛАВЛЕНИЕ	2
ХАРАКТЕРИСТИКИ	5
Основная информация	5
Размеры	5
Скорость, вместимость и масса	5
Размещение	5
Корпус и палуба	5
Информация о двигателе	6
ПОДРОБНОЕ ОПИСАНИЕ	7
STANDARD EQUIPMENT	7
DECK EQUIPMENT	7
AFT COCKPIT	7
FLYBRIDGE	8
LOWER HELM STATION	8
DECK SALON	8
BOW CABIN	9
GUEST CABINS (LEFT AND RIGHT)	9
AFT GUEST CABIN/CREW CABIN	9
UTILITY ROOM	9
POWER PLANT	9
ELECTRICAL SYSTEM	10
AIR CONDITIONING SYSTEM	10
FUEL SYSTEM	10
WATER SYSTEM	10
FIRE EXTINGUISHERS	11
BILGE PUMPS	11
OTHER ITEMS DELIVERED IN THE STANDARD	11
Galley	11

AMENITIES	11
MASTER CABIN	12
Исключения	12
Отказ от ответственности	12
ФОТОГРАФИИ	13
Exterior Back View	13
Bow Front View	13
Bow Upper View	13
Flybridge	13
Fly Helm	13
Flybridge Seats	13
Cocpit	14
Cocpit	14
Salon	14
Salon	14
U-sofa in Salon	14
Dinette	14
Galley	15
Galley	15
Stairs	15
Owner Cabin	15
Owner WC	15
Guest Cabin	15
Guest WC	16
КОНТАКТЫ	17
Контактная информация	17
Телефоны	17
Время работы	17
Адрес	17

ХАРАКТЕРИСТИКИ

Основная информация

Тип судна: Cruising Yacht	Модельный год: 2009
Год постройки: 2009	Страна: Turkey
Открытая палуба мостика: Да	Кубрик: Да

Размеры

Длина общая: 74' 11" (22.83m)	Ширина: 18' 9" (5.71m)
Мин. осадка: 5' 3" (1.60m)	

Скорость, вместимость и масса

Водоизмещение: 114419.913978 Pounds	Вместимость воды: 366.142464072 Gallons
Объем топливного бака: 1522.95187978 Gallons	

Размещение

Всего кают: 4

Корпус и палуба

Материал корпуса: GRP	Цвет корпуса: White
-----------------------	---------------------

Информация о двигателе

Двигатели: 2

Производитель: CAT

Модель: C32

Тип двигателя: Inboard

Тип топлива: Diesel

ПОДРОБНОЕ ОПИСАНИЕ

STANDARD EQUIPMENT

- Electro-hydraulic steering - Bow thruster (220 kgf) - Electrical system 24 V eg./240 In lane eg. - Input for connection of shore power supply 240V and adjustable charging device for charging batteries (2 x 75 A) - Diesel generator 220 V/240 V (22.5 kW) - The air conditioning system - Remote control electric anchor winch at two helm stations - Equipment for washing deck and anchor - Stern rope mooring winches - Trimmers electric, pointers and controls at both helm station - Autopilot at both helm station - VHF radio with digital selective calling and intercom system at both helm stations - Radar with color display chart plotter and GPS at both helm stations - Log with speed and distance data at the two helm stations - Echo sounder with alarm dual station control - spotlight with remote control - Microwave/oven with grill - Refrigerator - Freezer - Bar with refrigerator - Ice maker - Bar with electric barbecue and sink on flybridge - Fridge on flybridge - Dishwasher - Washing machine - Toilets with vacuum flush and storage tank - Salon TV with LCD screen, DVD player and Bose sound system - TV with LCD screen, DVD player and radio in both staterooms - A stereo CD/ radio flybridge Covered with teak platform near the transom, deck, cockpit, steps leading to the flybridge and side deck - Teak at side deck and flybridge - Deckchair sunbathing cushions on flybridge - Door to wheelhouse on starboard - The door to exit on the port side - Cabin doors with frames made from stainless steel - Crane on flybridge with space for a crew boat and jet ski (also covers the platform near the transom) - Telescopic gangway with remote control - Door in transom - Shower on transom with hot and cold water - A fully equipped crew cabin - Night tent for cockpit

DECK EQUIPMENT

- Teak platform near the transom, deck, cockpit, steps leading to the flybridge and side deck, side deck and flybridge - Reversible anchor winch with electric drive and controls on foredeck, main helm and flybridge - Roller for automatic lowering and lifting anchors - Delta-like anchor 50 kg with 90 metres chain - Twin stern rope mooring winches at starboard and port side - Locker for the bow mooring - Equipment for washing and deck anchor fresh water (with the connectors at the tank and the transom) - Sun lounger with sunbed on the roof of the cabin - Compartments for telescope on the roof of the cabin above the deck - Bollards of s/s for stern and springs (2 pairs) - Pulpit and fencing s/s - Roof rail for the master cabin on deck (stainless steel) - Handrails on top of the bridge overhanging the cockpit - High impact rubrail from white PVC w/added stainless steel - Full set of navigation lights - Anchor fire - Searchlight with remote control at both helm stations - Two electric horns - Filler neck to fill fuel and water - The device on the transom for washing the deck - Phone Jack - Crane on flybridge (420 kg)- Locker for liferaft - Stern docking lights

AFT COCKPIT

- Water system - Upholstered seat - Deck lighting - Cockpit tent - Stainless steel handrails/s - Telescopic gangway with remote control (3.2 m) - A garage near the transom with electro-hydraulic door drive - A garage near the transom with electro-hydraulic door drive - Bathing platform near the transom with space for crew boat/jet ski, folding swim ladder, shower with hot and cold shower, teak decking and deck lighting - The door leading into the crew cabin, utility room and engine room on the side. A watertight door in the transom for direct access from swim platform - Cabinet w/shore power input 240 V and cable - The storage compartment on the swim platform near the transom

FLYBRIDGE

- Dashboard at two helm stations (see lower helm station) - Helm station with a hydraulically rising dashboard that contains duplicate devices for controlling engines - Visual and audible alarm for bilge pump - Sprinkler system and alarm system for engine room - Place for charts - Additional seat U-shaped sofa/dining area - Sunbed - A stereo CD/ radio - Access to aft from cockpit via GRP hatch, access to the forward part of the cabin through a door and ladder - Windscreens - Stainless steel handrails/s - Lights at deck level - Radar arch GRP - Covers for console and seats - Agreed whip antenna for VHF - radio - Bar with fridge, sink, hot and cold water, BBQ facilities and a locker - Electro-hydraulic crane for the crew boat/jet ski (suitable for lifting 420 kg to flybridge and to the platform near the transom)

LOWER HELM STATION

- Console made of brown elm tree wood with devices to control the engine and fuel level indicators - Measuring instruments and controls on flybridge and lower helm: the position of the rudders electronic controls engines electro-hydraulic steering controls bow thruster electric windlass with remote control trim controls and position indicators autopilot VHF radio with digital selective calling and intercom system radar with color screen, GPS and Chartplotter all electronic navigation equipment is connected to the radar autopilots log display speed and distance echo sounder with alarm spotlight with remote control backup high speed magnetic compass horn switch button

- An intercom for communication with all cabins and engine room - Auto horn and megaphone - Two seats in the wheelhouse with leather upholstery and electric adjustment - Three windshield wipers with washing system- Controls bilge pumps - The control panel circuits 24 and 240V - Sunscreens made of PVC - Windshield high-strength in stainless steel frame - The door at the wheelhouse on the right side of the deck - Glass partition between the lower helm station and dining area electronically change the transparency

DECK SALON

- Large U-shaped sofa and coffee table - Double sofa - Entertainment center with TV (LCD

screen), DVD player and radio connected to Bose sound system - Bar with refrigerator and section for bottles and glasses - Curtains and blinds on all windows - Ceiling lights and light “valances” - The transom door into the cockpit with the frame of stainless steel, hinged window with electric in cockpit Dining area: - Dining area (8 chairs) w/sideboard

BOW CABIN

- big double bed with bottom drawers - Two Cabinet with shelves - Mirror - Dressing table with storage - TV with LCD screen, DVD player and radio - Sideboard

- Ceiling and hidden lights, reading lights - Intercom - The hatch leading to the deck

Shower and toilet in the cabin: - Sink with mixer inbuilt in tablecounter- Shower with automatic pump out water and exhaust hole - Storage for towels - Mirror - The storage compartment

GUEST CABINS (LEFT AND RIGHT)

- Two single beds with bottom drawers - Large wardrobe with shelves - Bedside table with drawers - Upper lockers - Ceiling lights and reading lights - Intercom Shower and toilet on the left and right cabins: - Shower with automatic pump out water and exhaust hole - Mirror - Storage for small things - Sink with mixer tap countertop - Access to bathroom and toilet cabins to the right of the aisle and cabins

AFT GUEST CABIN/CREW CABIN

- Two twin cabins - Wardrobe with hanger and storage compartment - Ceiling lights - Reading lights - Intercom - Access via ladder from the cockpit or transom hatch via utility room Shower/WC: - Sink with mixer - Shower with automatic pump out water and exhaust hole - Mirror - The Cabinet under the sink. - Top locker

UTILITY ROOM

- Access via transom hatch or via cockpit ladder - Offices, cupboards and lockers - Washing machine with dryer - Vacuum cleaner

POWER PLANT

- Light and sound alarm cooling on the upper and lower posts management - 5-bladed propellers alloy nicely, aluminum and bronze - Electric bow thruster (220 kgf), controlled from two stations (with two additional powerful batteries connected to the starter batteries) - Engine room lighting - Access to the engine room from side deck under the flybridge ladder - Electro-hydraulic steering -

Trim tabs with position indicators - Electronic engine management and transmission - Exhaust fan engine room with electronic delay timer

ELECTRICAL SYSTEM

24-volt: - 4 powerful battery for starting the engines and power the anchor winch (110 A/h each) - 4 powerful additional battery (200 Ah each) - Generators charge the battery via a diode system that isolates the batteries for the engine start from the additional batteries - Adjustable charger for additional batteries (2 x 75A) and engine starter accumulator (1h 5A) - Remote switches the main battery and switch on the main control panel - All targets are protected by automatic fuse - Voltage Converter 24/12 V to power certain navigation and radio circuits 220/240-volt: - a Diesel generator 22.5 kW with a private Soundproofed exhaust system with water cooling and a silencer - Automatic fire extinguisher located near the generator and connected to the main sprinkler system- Inlets for shore power 2 x 50 A- Switches the generator/shore power 220/240 volt:- System check the polarity- Leak protection, all circuits are protected by automatic fuses- 240V sockets in master cabin ((2), bow cabin (2), the left and right cabins, crew cabin, galley (2 double), saloon (2), dining area, utility room

AIR CONDITIONING SYSTEM

- Aft cabin - two reflector, 2 thousand BTU
- Bow cabin, helm station and galley - 30 thousand BTU
- Master cabin and bathroom - 16 thousand BTU
- Left and starboard guest cabins - 1 x 7 thousand BTU per cabin, with air vents in cabin and bathroom
- Forward guest cabin and bathroom - 1 X 10 thousand BTU with vents in cabin and bathroom
- Aft cabin - 1 x 10 thousand BTU with vents in cabin and bathroom

FUEL SYSTEM

- Two fuel tanks with a system of connections, total volume - 1270 gallons (5765 l)- Fuel fillers on the left and right side decks- High-performance dual fuel filters with water separators and changeover valves; water sensors; connected to alarms at both helm positions - Valves for remote shutdown of the fuel supply - The fuel level at the lower helm

WATER SYSTEM

- Water tanks 260 gallons (1182 l) and capacitor to heat 45 gallons (205 l) of water - Submersible water heater w/engine heat heater 240V - Automatic water pump with filter - Main circuit breaker at switch panel - Water-level indicator - Filler at the left side - Closed system of fresh water supply in toilets (with vacuum flush system to save water) connected with a storage tank volume of 100 gallons (457 l) - Storage tank with the possibility of discharge at the port or overboard, low noise electric pump and backup grinding system - Level of the contents indicator in the storage tank on the main communications panel

FIRE EXTINGUISHERS

- Automatic fire extinguishers in engine room and generator compartment with manual override and warning system at both helm positions; ventilation system engines - Manual fire extinguishers in the master cabin, bow cabin, left and right cabins, galley, utility room, lower helm station, crew cabin - Additional automatic fire extinguisher nearby the electrical equipment

BILGE PUMPS

- 7 automatic bilge pumps with manual override in residential areas (3), engine compartment (2) and pantry (2) - Electric bilge pumps are equipped with controls and indicator lights on lower helm and audible alarm at upper helm - High performance pump with manual control, the valve system and additional suction points in lazarette, engine room and other accommodation areas

OTHER ITEMS DELIVERED IN THE STANDARD

- A set of Cutlery and crockery for 8 people - Set of Edinburgh crystal glasses - Set of towels (8 large, 8 small) - Fenders (8) and mooring (4) - The stern flagpole with a pennant - First aid kit - Gaff - Guide to operation of boats and engines, tools - Quilted bedspreads for beds in owner's stateroom, bow guest cabin, left and right cabins (except crew cabins) - Electrodeless - Cockpit tent - Portfolio with ship documentation

Galley

- Working surface made of granite or avonite - Ceramic hob with 4 heating zones - Vent fan - Microwave oven/oven with grill - Double sink, stainless with mixer tap - High refrigerator with door and drawers and built-in ice maker + extra freezer - Dishwasher - Compact waste device - Ceiling and concealed lighting - Drawers and cupboards - Hardwood floors - Sliding partition for passage into the cabin - The door to exit on the port side

AMENITIES

- All cabins have opening and/or stationary portholes, vents for air condition, outlets 240 V - All

bathrooms are equipped with toilets w/vacuum flush w/fresh water and outlets for shaver 240V

MASTER CABIN

- Big double bed with bottom drawers - Bedside tables - Mirror- Closet with additional storage - Dressing table with seat - TV with LCD screen, DVD player and radio - Sofa - 3 x vertical windows (one is opening) at the port side and starboard - Desk - Wardrobe - The top compartment - Storage for small things - Ceiling and hidden lights, reading lights - Intercom Bathroom in the Master cabin: - Large sink with mixer tap built into vanity avonite - Bathtub/shower (with massage jets) incl. automatic pump out water and exhaust hole - Bidet - Storage for towels - Mirror - The storage compartment

Исключения

При продаже яхты исключаются личные вещи владельца.

Отказ от ответственности

Компания предоставляет описание судна или яхты добросовестно, но не может гарантировать точность этой информации, а также не ручается за техническое состояние. Покупатель должен проинструктировать своих агентов или оценщиков исследовать представленную информацию более подробно, по собственному желанию. Продажа судна или яхты, изменение цены или снятие с продажи будет происходить без предварительного уведомления.

ФОТОГРАФИИ

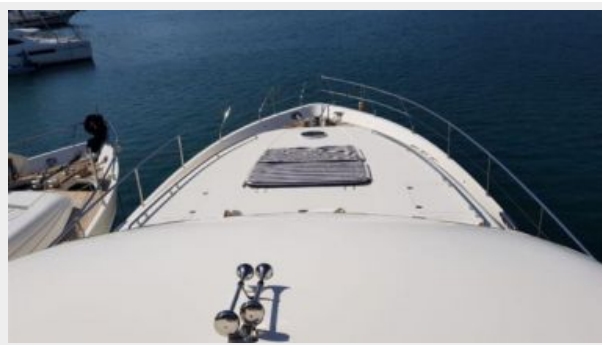
Exterior Back View



Bow Front View



Bow Upper View



Flybridge



Fly Helm



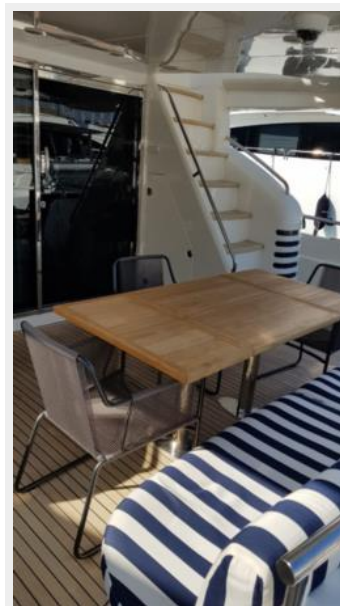
Flybridge Seats



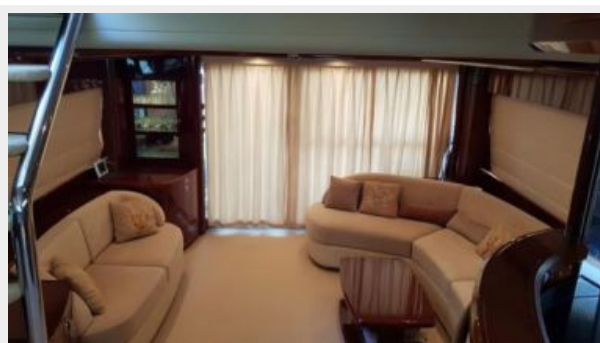
Сопит



Сопит



Salon



Salon



U-sofa in Salon



Dinette



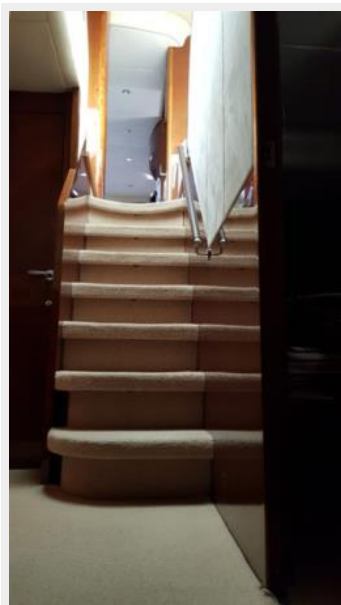
Galley



Galley



Stairs



Owner Cabin



Owner WC



Guest Cabin



Guest WC



КОНТАКТЫ

Андрей Шестаков (Andrey Shestakov) – ведущий яхтенный брокер отдела продаж яхт и судов компании Shestakov Yacht Sales Inc. Официальный представитель Shestakov Yacht Sales Inc. для русскоговорящих клиентов в центральном офисе компании в Майами/Форт Лодердейл/Флорида/США.

Контактная информация

Email: andrey@shestakovyachtsales.com

Web: shestakovyachtsales.com

Телефоны

Краснодарский край: **+7(918)465-66-44**

США, Майами, Флорида: **+1(954)274-4435**

Время работы

Понедельник – Суббота: **9:00 - 21:00**
EDT

Воскресенье: **Закрето**

Адрес



Harbour Towne Marina, 850 NE 3rd St,
STE 213, Dania, FL 33004