

GALEON 420 FLY — GALEON



Builder: GALEON

Year Built: 2018

Model: Motor Yacht

Price: PRICE ON APPLICATION

Location: United States

LOA: 43' 6" (13.26m)

Beam: 13' 8" (4.17m)

Min Draft: 3' 11" (1.19m)

Max Draft: 3' 9" (1.14m)

Cruise Speed: 16.6 Kts. (19 MPH)

Max Speed: 30 Kts. (35 MPH)

Our experienced yacht broker, Andrey Shestakov, will help you choose and buy a yacht that best suits your needs Galeon 420 Fly — GALEON from our catalogue. Presently, at Shestakov Yacht Sales Inc., we have a wide variety of yachts available on our sale's list. We also work in close contact with all the big yacht manufacturers from all over the world.

If you would like to buy a yacht Galeon 420 Fly — GALEON or would like help answering any questions concerning purchasing, selling or chartering a yacht, please call +1(954)274-4435

TABLE OF CONTENTS

TABLE OF CONTENTS	2
SPECIFICATIONS	4
Basic Information	4
Dimensions	4
Speed, Capacities and Weight	4
Accommodations	4
Hull and Deck Information	4
Engine Information	5
DETAILED INFORMATION	6
Description	6
2018 Standard Equipment	6
Hull & Deck Accessories	6
Mooring System	6
Cockpit	7
Stern	7
Flybridge	7
Interior	7
Saloon	7
Galley	8
Helm Station	8
Lower Corridor	8
Exclusions	8
Disclaimer	8
PHOTOS	9
CONTACTS	17
Contact details	17
Telephones	17
Office hours	17

Address

17

SPECIFICATIONS

Basic Information

Category: Motor Yacht

Model Year: 2018

Year Built: 2018

Country: United States

Dimensions

LOA: 43' 6" (13.26m)

Beam: 13' 8" (4.17m)

Min Draft: 3' 11" (1.19m)

Max Draft: 3' 9" (1.14m)

Speed, Capacities and Weight

Cruise Speed: 16.6 Kts. (19 MPH)

Max Speed: 30 Kts. (35 MPH)

Gross Tonnage: 26698 Pounds

Water Capacity: 119 Gallons

Holding Tank: 40 Gallons

Fuel Capacity: 291 Gallons

Accommodations

Total Cabins: 3

Total Heads: 2

Hull and Deck Information

Hull Material: Fiberglass

Engine Information

Engines: 2

Manufacturer: Volvo Penta

Model: Penta D6

Engine Type: Inboard

Fuel Type: Diesel

DETAILED INFORMATION

Description

Striped Walnut Wood Floor
 Beige Interior Color Scheme
 Tan & Mocha Exterior Color Scheme
 Yacht Controller
 Hydraulic Swim Platform with Teak
COMFORT PACK ADDED
OPTIONS:
 Flybridge bimini top canvas cover
 Flybridge steering console cover
 Flybridge helm seat
 Windshield Shades, front and side
 Curtain, saloon entrance door
 Trip computer
 Bow Thruster (electric)
 Cablemaster, Glendenning with 50 ft. cord
 Raymarine A127 Chartplotter & Fish Finder (main helm station)
 Auxiliary A125 Chartplotter (upper helm station)
 Raymarine Sonar transducer
 Raymarine Digital 4.0 kW Radome Radar
 Raymarine VHF Radio with Automatic Identification System (AIS) receiver, remote speaker, repeater and antenna
 Raymarine Autopilot with control units at main and bridge helm stations
 TV, Electric Sliding 32" Samsung® Smart LED with Bluray™ player – saloon
LUXURY PACK ADDED
OPTIONS:
 Refrigerator, flybridge drawer (1 ft3 / 30L)
 Foredeck sunpad
 Flooring, wooden – saloon
 Flooring, carpet runners over wooden floor - saloon
 TV, 24" Samsung® Smart LED – bow owner's cabin
 Pre-wire for audio/video guest cabin

2018 Standard Equipment

3 Staterooms, 2 Heads
 240v Electrical System
 Generator
 Air Conditioner
 Engine & Generator Fuel Fill
 Fire Extinguishing System
 Carbon Monoxide Monitors
 Windlass
 Spotlight
 Closed Bow Rail
 W/integrated Access
 Hydraulic Steering System
 Bow Thruster
 Stainless Steel Fuel Tank
 Dockside Water Connection
 Water Heater
 Bottom Paint
 Fixed Transom Platform
 Cockpit & Platform Exterior Teak
 Lower Helm Station
 W/doublewide Seat
 Flybridge Helm Station
 W/doublewide Seat
 Digital Helm Gauges
 P&S Electric Opening Side Window
 Single Pane Fwd Windshield
 Windshield Defroster
 Wipe

Hull & Deck Accessories

Bottom Paint
 Bow deck rail, 316 stainless steel with side access
 Cleats, stainless steel 11.5" (6)
 Fiberglass engine room air intakes and stainless steel outputs
 Flooring, molded non-skid (bow and side deck)
 Handrails, 316 stainless steel (cockpit, side deck and sunpad)
 Hatch, foredeck square with integrated skylights
 Horn, electric
 Lights, navigation

Mooring System

Reversible electric anchor winch
 Anchor roller
 Galvanized anchor, 44 lb (20 kg) with 197 ft (60 m) of 5/16" (8 mm) galvanized chain with leash protection
 Fiberglass deck hatch to self-draining chain locker
 Rubrail, PVC with stainless steel insert
 Spotlight, remote-controlled
 Thru-hull fittings, stainless steel
 Windows, bonded tempered glass (hullside) with integrated opening rectangular

portholes
Windshield, tempered & tinted glass (bonded), single pane forward glass
Windshield defroster

Cockpit

Door, Saloon Entrance – three part, folding, aluminum and glass, lockable with flush threshold
Handrails, 316 stainless steel
Hatch, Engine Room Access, with gas actuators
Lighting, indirect LED (cockpit and stairs)
Lighting, overhead LED
Self-draining
Sofa, sliding L-shape, upholstered with sunpad conversion, stainless steel rail and large storage below for fenders & lines
Stairs, access to flybridge (molded fiberglass, with teak treads and stainless steel handrail)
Stairs, access to walk-around (molded, port and starboard)
Teak, cockpit sole

Stern

Cleats, stainless steel 10.5” (2)
Door, cockpit access (fiberglass, port side)
Lighting, indirect LED
Shore power inlet, 240V
Shower, fresh water (hot & cold)
Swim platform, extended with teak decking and collapsible three-step stainless steel swim ladder

Flybridge

Flooring, molded non-skid
Handrails, 316 stainless steel
helm station
Compass
Cupholders
Helm Seat, doublewide
Outlets, USB
Station instruments and controls
7” Volvo Electronic Vessel Control (EVC) Panel
Switches
Fire System Monitor
Engine Ignition panel
Trim Tab Control Panel
Dual Lever Control, EVC
Steering wheel, exclusive Galeon
Stereo, remote control
Fiberglass arch with foldable, stainless steel radar mast
Hatch, flybridge access - watertight plexiglass
Light, anchor / stern
Lighting, indirect LED
Outlet, 120V GF
Seating, large L-shape upholstered sofa with storage lockers below
Seating, port double sofa adjacent to helm
Speakers (2)
Sunpad, forward of port double seat
Table, fiberglass with drink holders
Venturi wind deflector, plexiglass with 316 stainless steel rails
Wetbar with fiberglass sink, retractable faucet and storage

Interior

Dark Walnut Matte Cabinetry
Striped Walnut Wood Flooring
Misty Grey Window Treatments
Roman Blinds Interior

Saloon

Carbon Monoxide Detector
Flooring, carpet runners
Foldable hi-lo wood dining table with cushion filler
Hatch, secondary engine room access
Lighting, overhead LED with square wood ceiling accent
Outlet, 120V
Seating, U-shape upholstered sofa with convertible aft segment and

storage below Seating, opposing sofa Side windows, panoramic Stereo, Fusion 12V AM/FM with bluetooth module and two speakers Storage, side cupboard with plexiglass bottle holders Storage, shelf with stainless steel rail

Galley

Cooktop, 240V two-burner induction Corian worktop and finishings Sink, twin stainless steel with chrome faucet and corian cover Lighting, overhead LED Microwave, 120V Outlet, 120V GFI Protected Refrigerator, 12V with freezer compartment (4.6 ft³ / 130L) Refrigerator, 12V drawer (1.1 ft³ / 30L) Storage, general cabinets and drawers Storage, cupboards with sliding plexiglass doors and stainless steel rail Trash receptacle with corian cover Window, electric opening sliding (port side) Wooden floor

Helm Station

A/C vents Cupholders Handrails, leather wrap stainless steel Helm Seat, doublewide upholstered sofa with armrests, flip up bolsters, wooden footrest Outlets, USB Station Instruments and controls- Volvo 7" digital Electronic Vessel Control (EVC) Panel-Compass-Switches-Fire System Monitor- Engine Start Panel with electronic key fobs-Trim Tab Control Panel-Dual Lever Control, EVC- Alarm, High Water – bilge, cabin-Galeon 420 model with exterior light indicators Steering wheel, exclusive Galeon Window, electric opening (starboard side) Windscreen wipers, synchronized twin with front window washing system and defroster outlets

Lower Corridor

Flooring, carpet Lower Accommodation Stairs, wide solid wood treads with indirect LED spot lights and leather- wrapped stainless steel rail Door, access to guest head with full length mirror

Exclusions

Owner's personal belongings.

Disclaimer

The Company offers the details of this vessel or yacht in good faith but cannot guarantee or warrant the accuracy of this information nor warrant the condition of the vessel. A buyer should instruct his representatives, agents, or his surveyors, to investigate such details as the buyer desires validated. This vessel or yacht is offered subject to prior sale, price change, or withdrawal without notice.

PHOTOS

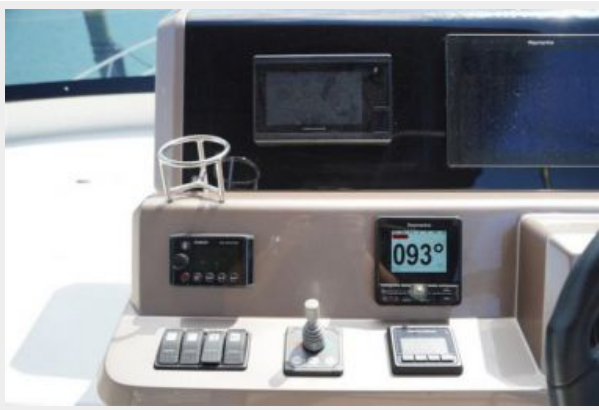
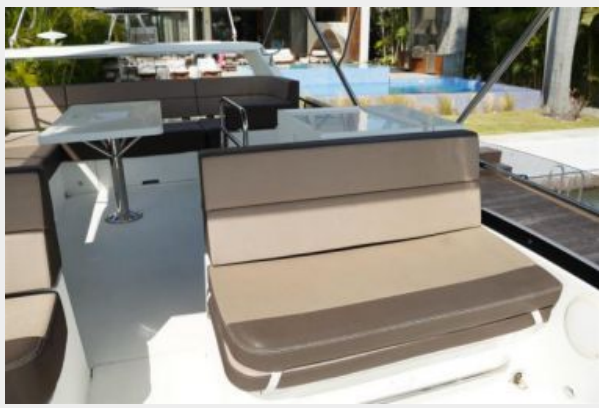
















CONTACTS

Andrey Shestakov, leading yacht broker of the sales department of Shestakov Yacht Sales Inc. Shestakov Yacht Sales Inc., the official representative of the Miami/Fort Lauderdale FL headquarters.

Contact details

Email: andrey@shestakovyachtsales.com

Web: shestakovyachtsales.com/en/

Telephones

USA: +1(954)274-4435

Office hours

Monday – Saturday: **9:00 - 21:00** EDT

Sunday: **closed**

Address



Harbour Towne Marina, 850 NE 3rd St,
STE 213, Dania, FL 33004