

INDIGO — BENETEAU



Судостроитель: BENETEAU

Год постройки: 2008

Модель: Крейсерская яхта

Цена: **ЦЕНА ЯХТЫ ПО ЗАПРОСУ**

Местонахождение: United States

Длина общая: 46' 3" (14.10m)

Ширина: 14' 1" (4.29m)

Мин. осадка: 5' 9" (1.75m)

Купить **Indigo — BENETEAU** а также выбрать подходящую вам яхту из нашего **каталога яхт** вам поможет опытный яхтенный брокер Андрей Шестаков. На сегодняшний день компания **Shestakov Yacht Sales Inc.** имеет большое количество яхт в **собственном списке продаж**, а также тесно сотрудничает со всеми крупными яхтенными производителями по всему миру.

Для того чтобы купить яхту **Indigo — BENETEAU** а также проконсультироваться по любому вопросу связанному с покупкой, продажей, чартером яхт позвоните по телефону **+7(918)465-66-44**.

ОГЛАВЛЕНИЕ

ОГЛАВЛЕНИЕ	2
ХАРАКТЕРИСТИКИ	5
Обзор	5
Основная информация	5
Размеры	6
Скорость, вместимость и масса	6
Размещение	6
Корпус и палуба	6
Информация о двигателе	6
ПОДРОБНОЕ ОПИСАНИЕ	7
Overview	7
Исключения	15
Отказ от ответственности	15
ФОТОГРАФИИ	16
photo 02	16
photo 03	16
photo 04	16
photo 05	16
photo 06	16
photo 07	16
photo 08	17
photo 09	17
photo 10	17
photo 11	17
photo 12	17
photo 13	17
photo 14	18
photo 15	18

photo 16	18
photo 17	18
photo 18	18
photo 19	18
photo 20	19
photo 21	19
photo 22	19
photo 23	19
photo 24	19
photo 25	19
photo 26	20
photo 27	20
photo 28	20
photo 29	20
photo 30	20
photo 31	20
photo 32	21
photo 33	21
photo 34	21
photo 35	21
photo 37	21
photo 36	21
photo 38	22
photo 39	22
photo 40	22
photo 41	22
photo 42	22
photo 43	22
photo 44	23

photo 45	23
photo 46	23
photo 47	23
photo 49	23
photo 48	23
photo 50	24
КОНТАКТЫ	25
Контактная информация	25
Телефоны	25
Время работы	25
Адрес	25

ХАРАКТЕРИСТИКИ

Обзор

Indigo, a beautiful, one owner, Beneteau 46 is a near ideal blend of performance, comfort, and user-friendliness. "Indigo" has always been sailed locally in the fresh waters of Lake Erie out of Sandusky, Ohio, she has been maintained to high standards and it shows!

Equipped with everything you need for ease of handling; electric halyard/mainsheet winch, furling mainsail and genoa, twin helms for an unobstructed view, walk-thru transom, electric anchor windlass, bow-thruster, and much more.

Original upgrades include the larger Yanmar 76 hp turbo diesel (4JH4TE) with the Flexofold 3 blade prop, 2 additional 4D house batteries (4 total), Prowatt 3000 Inverter and Jabsco electric heads.

New in 2017; the best combination of navigation equipment (Garmin GPS Map 7612 chart-plotter, Raymarine i70 sailing instruments and Furuno Nav Pilot 71c at each helm), Xantrex True-Charge-2 40 amp battery charger, Garmin AIS 600 and Clarion M606 stereo system with Bluetooth, XM and JL marine MX650 speakers.

A large Bimini, with three removable sunscreens and a dodger, will keep you comfortable on deck. Below deck is finely finished woodwork, spacious accommodations, large galley, the preferred two-stateroom layout with forward and aft "owners" staterooms, two head compartments with showers and two zone Dometic Cruisair SMX air conditioning systems. Complete with a cradle and winter cover for storage.

Основная информация

Тип судна: Крейсерская яхта

Модельный год: 2008

Год постройки: 2008

Страна: United States

Размеры

Длина общая: 46' 3" (14.10m)

Длина по ватерлинии: 40' 8" (12.40m)

Ширина: 14' 1" (4.29m)

Мин. осадка: 5' 9" (1.75m)

Длина привального бруса: 46' 0"
(14.02m)

Скорость, вместимость и масса

Водоизмещение: 22046 Pounds

Вместимость воды: 150 Gallons

Вместимость сточного бака: 21 Gallons

Объем топливного бака: 63 Gallons

Размещение

Всего кают: 2

Всего коек: 4

Всего ком. состава: 2

Корпус и палуба

Материал корпуса: Fiberglass

Информация о двигателе

Двигатели: 1

Производитель: Yanmar

Модель: 4JH4TE

Тип двигателя: Inboard

Тип топлива: Diesel

ПОДРОБНОЕ ОПИСАНИЕ

Overview

Accommodations

The Beneteau 46 is spacious, warm and inviting, thanks to the Nauta designed interior which emphasizes the space with clean lines and a classy, modern finish enhanced by the soft toned Alpi wood finish and the huge amount of natural light that comes in through the plethora of windows and hatches.

The Galley is to port, tucked partly below the open-staired companionway. The L-shape makes good use of space with fridge, freezer, double stainless steel sinks, stove and plenty of storage. To starboard is a head, which can be accessed from the salon and the master cabin, and the master cabin which is enormous. It has a queen-sized berth that is situated at 45 degree angle, allowing access from both sides as well as to the storage and vanity at the port side of the cabin. A large mirror and vanity are centrally situated above an opening which provides access to the back of the engine. This cabin is well ventilated by numerous opening ports and hatches and has plentiful storage.

The salon is open and light with long portlights that run down the side of the coachroof, as well as skylights in the cabintop and opening hatches. The Nav station/chart table is to starboard & forward of this is a straight settee. A TV is positioned on the forward bulkhead. To port is a U-shaped settee round the dining table which can be lowered to form a double berth. A single seat/bench can be screwed into the floor on the midships side of the table, or released to use as seating if there is a crowd for dinner.

The forward cabin is a large V-berth with a vanity to starboard and a head, with a revolving shower door, to port. A large hatch in the cabintop provides ventilation and light and there is storage on both sides of the cabin as well as along the hull sides.

STANDING RIGGING

- Stainless steel shrouds and stays
- Genoa roller furling system
- Stainless steel chainplates are taken to the inner molding w/stainless steel tie rods

RUNNING RIGGING

- Running rigging is led to the cockpit
- Running rigging comprises: Main halyard, Genoa halyard w/Jammer & cleat on mast, Boom topping lift w/cleat on mast, Mainsail foot outhaul, Mainsheet Traveler w/track
- 2 genoa sheets
- Rigid boom vang w/tackle

SPARS

- Fractional 9/10 anodized aluminum deck-stepped mast w/standard mainsail furling system
- Twin aft swept spreaders of Anodized aluminum
- Boom w/outhaul

DECK GEAR

- Chrome finish Lewmar winches:
- Two Lewmar 54 genoa sheet winches on coaming
- Two winches on coachroof: 2-40 on port & 1-40 starboard
- 2 winch handles & 2 handle holders

SAILS

- Furling genoa w/135% overlap, reinforced w/anti-UV protection strip
- Furling mainsail
- Mainsheet led back to port winch
- Furling genoa w/drum on deck, furling line led back to the cockpit to port
- 2 genoa tracks & adjustable cars
- 2 genoa sheet fast blocks w/integral Jammers

MOORING AND ANCHORING

- Welded stainless steel bow fitting
- 2 bow rollers w/ permanent anchor stowage
- 6 stainless steel mooring cleats w/rub strakes
- Self-draining anchor rode/chain well w/hatch

- 1000 W vertical windlass w/ remote control

ON DECK

- 1 opening deck hatch (20"x20")
- Stainless steel open pulpit w/step & nav lights
- 2 stainless steel pulpit aft, 1 port & 1 starboard
- Lifebuoy holder, Outboard motor bracket, & Ensign staff holder
- Double vinyl coated lifelines w/stanchions
- Side opening gates in lifelines
- Teak toe rail surrounding deck
- 2 SS handrails on coachroof for cockpit access
- 2 SS handrails at forward end of coachroof
- 3 cockpit stowage lockers
- All cockpit benches have teak inlays
- Steering consoles will take navigation instruments
- 2 mounted compasses, one at each helm position
- GRP cockpit table w/2 drop leaves fitted w/locker, bottle stowage & SS handrail
- Aft surface of table support serves as a bottle holder or can take a chart plotter
- 2 waterproof speakers
- 2 winch handle holders
- Reading lamp w/12 V socket
- 1 shore supply socket to starboard
- Self-draining GRP cockpit floor
- 2-bottle gas locker
- Access gate to bathing platform pivoting on pantograph track (Bénéteau patent)
- Liferaft locker w/double door built into transom
- Teak slatted swim platform
- Swim ladder with teak steps to starboard
- Hot & cold cockpit shower

STEERING SYSTEM

- Under-hung rudder w/glass fibre composite stock
- Double helm position in cockpit aft:
- Twin (2) 36" diameter steering wheels
- Emergency tiller access point & emergency tiller

ACCOMMODATION

- Light Toned Varnished MOABI woodwork
- Soles w/parquet look finish

OWNER'S CABIN FORWARD

- Headroom: 6'4"
- Double berth: 6'7" x 5'3" island berth w/high-density foam mattress
- Ample stowage space: large drawer under berth, locker w/clothes locker under hanging section
- 2 lockers to either side of berth
- Hanging locker
- Dressing table w/mirror & locker
- Large opening hatch with blind/mosquito screen
- Opening hatch with blind/mosquito screen
- 2 fixed hull ports (1 each side of hull) w/curtains
- 3 halogen overhead lights and 3 reading lights
- One 110 V socket beside dressing table

FORWARD HEAD COMPARTMENT

- One-piece molded head compartment w/separate shower w/curved pivoting plexiglass shower door
- Quiet flush manual marine toilet
- Synthetic resin worktop & washbasin
- Hot & cold mixer tap, Mirror
- Locker w/closed shelf above
- Locker under basin w/waste bin & paper holder
- Opening deck hatch with blind/mosquito screen
- 3 halogen overhead lights w/switch

SALON & COMPANIONWAY

- Salon companionway w/non-slip surface
- For safety, it has four stainless steel handrails
- Forward-facing chart table w/lid & wood fiddle
- 2 hinged lockers, closed shelf
- Drawer & closed locker w/shelves under chart table

- Stainless steel handrail
- Fabric inner lining to side
- 12 V / 110 V electrical panel with 12 V socket
- Navigator's seat w/locker for battery charger & optional inverter under starboard seat,
- Radio/CD/MP3 player w/two speakers
- One 110 V socket
- 2-seater settee w/removable central armrest
- 2 closed stowage units and shelves along the hull
- Port & starboard shelves w/stainless steel fiddles
- U-shaped dining table/settee & 4 cushions
- Stowage under settees, 2 removable seats
- Salon table
- Stowage along the hull
- 4 closed shelves along the hull
- 2 hull ports (1 port/1 starboard) with curtains
- 1 panoramic window w/folding blinds
- 1 opening deck hatch w/blind/mosquito screen
- 2 opening deck hatches w/Oceanair combination screen/privacy curtain
- 2 fixed side windows to port, 1 to starboard w/pleated blinds
- Chart table lighting: 1 overhead light & 1 strip light for white/red lighting
- Salon lighting: 5 halogen overhead lights, mood lighting under shelves
- Companionway lighting: 2 halogen overhead lights, 1 switch for mood lighting, 1 switch for halogen lights

GALLEY TO PORT

- Rectangular stainless steel double sink
- Hot & cold pressurized mixer tap Gimbaled 3-burner stainless steel stove w/oven & stainless steel safety bar
- Vitrofrigo 130L refrigerator
- Vitrofrigo 100L freezer
- Synthetic resin worktop under companionway
- 110 V microwave oven operates off shore power
- 1 locker w/double door under sink & waste bin
- 1 stowage unit w/3 lockers, towel holder & shelves
- Locker w/sliding stainless steel vegetable rack
- 2 closed shelves for stowage, cutlery drawer
- 1 shelf w/stainless steel fiddle
- One opening port in coaming
- Galley lighting: 3 halogen overhead lights, 1 light over stove, mood lighting under shelf, One 110 V socket

STARBOARD AFT HEAD COMPARTMENT

- One-piece molded head compartment w/separate shower w/double folding door
- Manual marine toilet
- 21 gal rigid holding tank as standard
- Synthetic resin worktop & washbasin
- Hot & cold mixer tap
- 2 large closed lockers, glass holder & locker under washbasin w/accessories
- 1 fixed side window w/curtain + 1 opening port
- 3 overhead lights & switch

AFT CABIN

- Headroom: 6'7"
- Two closed shelves along the hull
- Hanging locker w/locker beneath
- Under-berth locker
- Cloth inner liner on hull
- Starboard aft cabin has access door to head
- Openings & lighting in each cabin: 1 fixed hull port w/curtain, 1 opening port in coaming, 1 opening deck hatch w/blind/mosquito screen, 2 halogen overhead lights w/switch, 2 reading lights, One 110 V socket
- 1 cockpit port in aft port cabin
- 2 cockpit ports in aft starboard cabin

PLUMBING

- Fresh water: 150 gal standard
- Electric pressure water pump w/filter
- 2 rotomolded water tanks fixed to the hull liner (63 gal under port aft cabin berth + 87 gal under fore cabin berth)
- Two aluminum deck fillers for water
- Cockpit shower w/hot and cold water
- Electric shower drain pumps
- 3 bilge pumps (one manual and 2 electric)

- 1 electric pump for icebox drainage
- Force 10 water heater 11 Gal

ELECTRICITY

- Backlit electrical panel: 10 x 12 V switches + 11 fused switches + 4 x 110 V switches
- 12 V cigarette lighter socket
- 110 V double pole circuit breakers
- 110 V -12 V voltmeter.
- Water gauge & fuel gauge w/central LCD screen
- Low battery and low diesel tank alarms
- 2 x 200 Amp service battery vouchers
- 1 x 105 Amp engine start battery voucher
- Battery charging: 110 V shore supply w/40 Amp battery charger & 50' cable
- 80 Amp alternator coupled to the engine
- 12V Power distributor
- Lightning grounding for the rigging
- 7 x 110 V sockets
- 7 reading lights, 23 halogen overhead lights, ambient lighting under shelves.
- Bow & stern nav lights, steaming light, fore deck light
- Anchor light/ masthead navigation light
- Cable conduits for options

ENGINE

- Yanmar 76 hp turbo diesel (4JH4TE)
- Engine bed integrated in hull liner, soundproofed with insulating foam
- Access under companionway steps, through an opening supported by gas struts
- Stainless steel propeller shaft w/GRP protection
- Flexofold 3 blade prop
- Rotomolded 63 gal fuel tank w/electronic gauge
- Seawater filter & diesel fuel filter/water separator
- Engine panel w/integral key start in cockpit

Factory-Supplied Sail-Away Cruising Package

- 12V Front Loading Refrigeration
- 12 V Top Loading Freezer
- 12 V Jabsco Electric Toilet (2)
- 12 V Electric Anchor Windlass Windlass
- 3 Burner LPG Gas Stove/Oven
- Microwave Oven
- Mosquito Screens for Hatches & Opening Ports
- 2 Salon Speakers
- Clarion M606 stereo system with Bluetooth, XM and JL marine MX650 speakers.
- Cockpit Shower - Hot and Cold
- Bulkheads Bonded 360 Degrees
- Cockpit Courtesy Lights With Remote Control
- Separate Stall Shower in Both Heads

Factory Supplied Options & Selections

- Yanmar 76 hp turbo diesel (4JH4TE)
- 5' 9" Draft Keel
- Formica Floor
- Capri Cushion Selection
- Bow Thruster 6 HP
- Sea Water Deck Wash Down Pump
- Indirect Lighting
- Air Conditioning with Reverse Cycle Heat, 28,000 BTU
- Two Extra 12 Volt Batteries
- Flexo-Fold Geared Folding Propeller
- Opening Port Lights in Large Salon Windows
- Electric Winches

Dealer Electronics Upgrades

- Chart Plotter - Garmin GPS Map 7612
- Sailing Instruments - Raymarine i70
- Autopilot - Furuno Nav Pilot 71c at each helm
- Inverter - Xantrex True-Charge-2 40 amp battery charger
- Garmin AIS 600

Miscellaneous

- Bow thruster – Lewmar Electric 185TT 5.0kw 12v
- Bottom Prep - Interprotect 200E Primercoat
- Interlux VC17 Antifouling
- Fenders, dock lines, anchor chain & rode
- Canvas, Bimini, Dodger, Connector and sunscreens
- Custom winter cover & frame

Исключения

При продаже яхты исключаются личные вещи владельца.

Отказ от ответственности

Компания предоставляет описание судна или яхты добросовестно, но не может гарантировать точность этой информации, а также не ручается за техническое состояние. Покупатель должен проинструктировать своих агентов или оценщиков исследовать представленную информацию более подробно, по собственному желанию. Продажа судна или яхты, изменение цены или снятие с продажи будет происходить без предварительного уведомления.

ФОТОГРАФИИ

photo 02



photo 03



photo 04



photo 05



photo 06



photo 07



photo 08



photo 09



photo 10



photo 11



photo 12



photo 13



photo 14



photo 15



photo 16



photo 17



photo 18



photo 19



photo 20



photo 21



photo 22



photo 23



photo 24



photo 25



photo 26



photo 27



photo 28



photo 29



photo 30



photo 31



photo 32



photo 33



photo 34



photo 35



photo 36



photo 37



photo 38



photo 39



photo 40

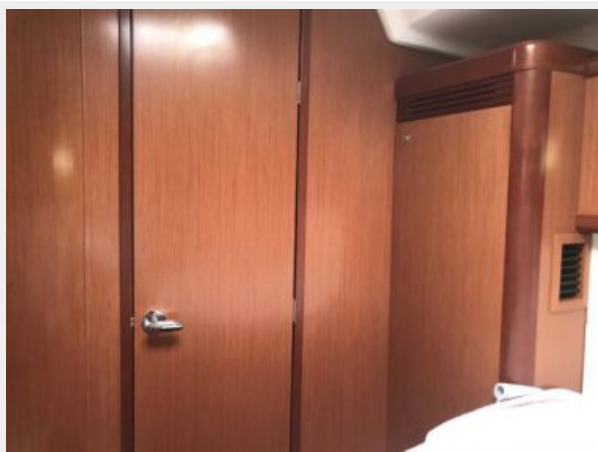


photo 41



photo 42



photo 43



photo 44



photo 45

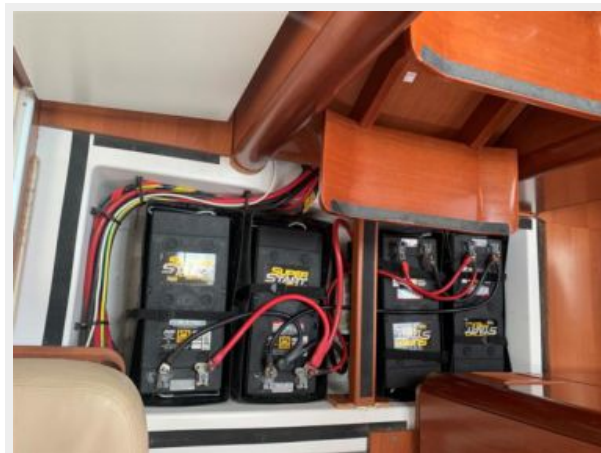


photo 46



photo 47



photo 48



photo 49



photo 50



КОНТАКТЫ

Андрей Шестаков (Andrey Shestakov) – ведущий яхтенный брокер отдела продаж яхт и судов компании Shestakov Yacht Sales Inc. Официальный представитель Shestakov Yacht Sales Inc. для русскоговорящих клиентов в центральном офисе компании в Майами/Форт Лодердейл/Флорида/США.

Контактная информация

Email: andrey@shestakovyachtsales.com

Web: shestakovyachtsales.com

Телефоны

Краснодарский край: **+7(918)465-66-44**

США, Майами, Флорида: **+1(954)274-4435**

Время работы

Понедельник – Суббота: **9:00 - 21:00**
EDT

Воскресенье: **Закрето**

Адрес



Harbour Towne Marina, 850 NE 3rd St,
STE 213, Dania, FL 33004