

## PEARL — PEARL MOTOR YACHTS



**Builder:** PEARL MOTOR YACHTS

**Year Built:** 2017

**Model:** Motor Yacht

**Price:** PRICE ON APPLICATION

**Location:** United States

**LOA:** 65' 11" (20.09m)

**Beam:** 16' 11" (5.16m)

**Max Draft:** 5' 0" (1.52m)

**Cruise Speed:** 25 Kts. (29 MPH)

**Max Speed:** 33 Kts. (38 MPH)

Our experienced yacht broker, Andrey Shestakov, will help you choose and buy a yacht that best suits your needs **PEARL — PEARL MOTOR YACHTS** from our catalogue. Presently, at Shestakov Yacht Sales Inc., we have a wide variety of yachts available on our sale's list. We also work in close contact with all the big yacht manufacturers from all over the world.

If you would like to buy a yacht **PEARL — PEARL MOTOR YACHTS** or would like help answering any questions concerning purchasing, selling or chartering a yacht, please call **+1(954)274-4435**

# TABLE OF CONTENTS

TABLE OF CONTENTS	2
SPECIFICATIONS	7
Overview	7
Basic Information	7
Dimensions	8
Speed, Capacities and Weight	8
Accommodations	8
Hull and Deck Information	8
Engine Information	8
DETAILED INFORMATION	9
«PEARL 65» PEARL MOTOR YACHTS	9
Pearl Motor Yachts - architect Bill Dixon and interior designer Kelly Hoppen	10
Exclusions	11
Disclaimer	11
PHOTOS	12
PEARL MOTOR YACHTS 1	12
PEARL MOTOR YACHTS 2	12
PEARL MOTOR YACHTS 3	12
PEARL MOTOR YACHTS 4	12
PEARL MOTOR YACHTS 5	12
PEARL MOTOR YACHTS 6	12
PEARL MOTOR YACHTS 7	13
PEARL MOTOR YACHTS 8	13
PEARL MOTOR YACHTS	13
PEARL MOTOR YACHTS 10	13
PEARL MOTOR YACHTS 11	13
PEARL MOTOR YACHTS 12	13
PEARL MOTOR YACHTS 13	14

---

PEARL MOTOR YACHTS 14	14
PEARL MOTOR YACHTS 15	14
PEARL MOTOR YACHTS 16	14
PEARL MOTOR YACHTS 17	14
PEARL MOTOR YACHTS 18	14
PEARL MOTOR YACHTS 19	15
PEARL MOTOR YACHTS 20	15
PEARL MOTOR YACHTS 21	15
PEARL MOTOR YACHTS 22	15
PEARL MOTOR YACHTS 23	15
PEARL MOTOR YACHTS 24	15
PEARL MOTOR YACHTS	16
PEARL MOTOR YACHTS 26	16
PEARL MOTOR YACHTS 27	16
PEARL MOTOR YACHTS 28	16
PEARL MOTOR YACHTS 29	16
PEARL MOTOR YACHTS 30	16
PEARL MOTOR YACHTS 31	17
PEARL MOTOR YACHTS 32	17
PEARL MOTOR YACHTS 33	17
PEARL MOTOR YACHTS 34	17
PEARL MOTOR YACHTS 35	17
PEARL MOTOR YACHTS 36	17
PEARL MOTOR YACHTS 37	18
PEARL MOTOR YACHTS 38	18
PEARL MOTOR YACHTS 39	18
PEARL MOTOR YACHTS 40	18
PEARL MOTOR YACHTS 41	18
PEARL MOTOR YACHTS 42	18

---

---

PEARL MOTOR YACHTS 43	19
PEARL MOTOR YACHTS 44	19
PEARL MOTOR YACHTS 45	19
PEARL MOTOR YACHTS 46	19
PEARL MOTOR YACHTS 47	19
PEARL MOTOR YACHTS 48	19
PEARL MOTOR YACHTS 49	20
PEARL MOTOR YACHTS 50	20
PEARL MOTOR YACHTS 51	20
PEARL MOTOR YACHTS 52	20
PEARL MOTOR YACHTS 53	20
PEARL MOTOR YACHTS 54	20
PEARL MOTOR YACHTS 55	21
PEARL MOTOR YACHTS 56	21
PEARL MOTOR YACHTS 57	21
PEARL MOTOR YACHTS 58	21
PEARL MOTOR YACHTS 59	21
PEARL MOTOR YACHTS 60	21
PEARL MOTOR YACHTS 61	22
PEARL MOTOR YACHTS 62	22
PEARL MOTOR YACHTS 63	22
PEARL MOTOR YACHTS 64	22
PEARL MOTOR YACHTS 65	22
PEARL MOTOR YACHTS 66	22
PEARL MOTOR YACHTS 67	23
PEARL MOTOR YACHTS 68	23
PEARL MOTOR YACHTS 69	23
PEARL MOTOR YACHTS 70	23
PEARL MOTOR YACHTS 71	23

---

---

PEARL MOTOR YACHTS 72	23
PEARL MOTOR YACHTS 73	24
PEARL MOTOR YACHTS 74	24
PEARL MOTOR YACHTS 75	24
PEARL MOTOR YACHTS 76	24
PEARL MOTOR YACHTS 77	24
PEARL MOTOR YACHTS 78	24
PEARL MOTOR YACHTS 79	25
PEARL MOTOR YACHTS 80	25
PEARL MOTOR YACHTS 81	25
PEARL MOTOR YACHTS 82	25
PEARL MOTOR YACHTS 83	25
PEARL MOTOR YACHTS 84	25
PEARL MOTOR YACHTS 85	26
PEARL MOTOR YACHTS 86	26
PEARL MOTOR YACHTS 87	26
PEARL MOTOR YACHTS 88	26
PEARL MOTOR YACHTS 89	26
PEARL MOTOR YACHTS 90	26
PEARL MOTOR YACHTS 91	27
PEARL MOTOR YACHTS 92	27
PEARL MOTOR YACHTS 93	27
PEARL MOTOR YACHTS 94	27
PEARL MOTOR YACHTS 95	27
PEARL MOTOR YACHTS 96	27
PEARL MOTOR YACHTS 97	28
PEARL MOTOR YACHTS 98	28
PEARL MOTOR YACHTS 99	28
PEARL MOTOR YACHTS 100	28

---

---

PEARL MOTOR YACHTS 101	28
PEARL MOTOR YACHTS 102	28
PEARL MOTOR YACHTS 103	29
PEARL MOTOR YACHTS 104	29
PEARL MOTOR YACHTS 105	29
PEARL MOTOR YACHTS 106	29
PEARL MOTOR YACHTS 107	29
PEARL MOTOR YACHTS 108	29
CONTACTS	30
Contact details	30
Telephones	30
Office hours	30
Address	30

---

# SPECIFICATIONS

---

## Overview

---

**PEARL 65 YACHT - Very low hours yacht - 400 hours on Engines 2 x Volvo IPS 1200 at a bargain price.**

**Pearl 65'** continues Bill Dixon's design ethos of beautiful craftsmanship with cutting-edge innovation and superb seakeeping. The four - cabin interior is set off by Kelly Hoppen's famously stylish, effortlessly calming decor. Add to that further accommodation for two crew, and you'll find everything you need for the most memorable of experiences.

### 65' PEARL YACHT LAYOUT - INTERIOR

The **Pearl 65** boasts a 4 cabin interior to accommodate 8 sleeping guest in two double cabins, one twin cabin and one bunk bed cabin, with an additional crew cabin for 2. Open plan stylish saloon, dining and kitchenette, with adjoining helm station. Ample dining table and seating on the undercover rear of the yacht. On the flybridge she offers another table with seating, for dining al fresco, or to enjoy the view during travelling. Forward of the flybridge helm position is a comfortable sunbathing area. It features further sunbathing on the double sun-beds on the bow.

Powered by 2 x Volvo D13 IPS 1200 pod drives, allowing joystick maneuverability, impressive handling and excellent performance.

Specification includes: Hard top, hydraulic bathing platform, tropical air conditioning, bow thruster, CCTV, water maker, Sea-keeper SK9 gyro stabilizer, Kohler 20 Kw generator (only 400 Hours) and much, much more.

---

## Basic Information

---

**Category:** Motor Yacht

**Sub Category:** Flybridge

**Model Year:** 2017

**Year Built:** 2017

**Country:** United States

**Fly Bridge:** Yes

---

## Dimensions

---

**LOA:** 65' 11" (20.09m)

**Beam:** 16' 11" (5.16m)

**Max Draft:** 5' 0" (1.52m)

---

## Speed, Capacities and Weight

---

**Cruise Speed:** 25 Kts. (29 MPH)

**Max Speed:** 33 Kts. (38 MPH)

**Displacement:** 77161.7917 Pounds

**Water Capacity:** 200 Gallons

**Fuel Capacity:** 770 Gallons

---

## Accommodations

---

**Total Cabins:** 4

**Sleeps:** 8

**Total Heads:** 4

**Crew Cabin:** 1

**Crew Berths:** 2

**Crew Sleeps:** 2

**Crew Heads:** 1

---

## Hull and Deck Information

---

**Hull Material:** Fiberglass

**Deck Material:** Teak

**Exterior Designer:** Bill Dixon

**Interior Designer:** Kelly Hoppen

---

## Engine Information

---

**Engines:** 2

**Manufacturer:** Volvo Penta

**Model:** Volvo IPS 1200

**Fuel Type:** Diesel



---

# DETAILED INFORMATION

---

## «PEARL 65» PEARL MOTOR YACHTS

---

### OPTIONAL EXTRAS

- Hard top
- Seakeeper SK9 gyro stabiliser
- Underwater lights
- 20KW generator

### STANDARD FEATURES

- AFT crew cabin
- Reverse cycle air conditioning system
- Hydraulically, operated platform
- Dishwasher
- Electronic engine controls with Joy stick control
- Flybridge wetbar including sink, coolbox, fridge and electric barbecue 220v/240v diesel generator
- Electric quiet flush toilets with holding tank
- Dual station bow thruster (170kgf/375lbf)
- Saloon LED TV/DVD with surround-sound system
- 240v shore power with 100-amp battery charger LED TV/DVD/radio in owner's stateroom
- Colour radar/chart plotter/GPS/VHF
- Teak-laid transom platform/cockpit deck/flybridge stairway
- Combination microwave/conventional oven

### FEATURES/EQUIPMENTS

Standard features:

- Hydraulically operated bathing platform
- Bi-fold stainless steel framed patio door
- Electronic engine controls with joystick
- Aft deck seating area with Hi-Lo teak table
- Garmin colour radar/plotter/GPS
- LCD TVs throughout
- Integrated audio system
- 2000W electric anchor winch
- 1250W Capstan mooring winches
- Flybridge wet bar with barbecue, sink and drinks fridge
- Fully functional galley on main deck
- Electric side windows with lower helm

---

### Optional extras:

- Seakeeper SK9 gyro stabiliser
- Hard top
- Tropical reverse cycle air conditioning system
- Teak flybridge and side decks
- Washer/dryer
- Underwater lights
- Low level side deck lights
- City water connect
- Joy Stick controls
- Electrically operated AFT deck table legs
- CCTV camera
- Watermaker
- Reverse oil change system
- Rear docking lights
- External cover set
- Freight to USA
- Ice maker

### INTERIOR ARRANGEMENTS

- On deck galley
- Berths: 8 plus 2 crew
- Master cabin, VIP cabin and two twin guest cabins
- Interior design by Kelly Hoppen

### SPECIFICATIONS

Length Overall (Inc Pulpit) 20.1m (65'11")

Length Overall (Exc Pulpit) 19.8m (64'11")

Maximum Beam 5.16m (16'11")

Design Draft (5')

Engines 2 x Volvo IPS 1200

Displacement 35 tonnes

---

## **Pearl Motor Yachts - architect Bill Dixon and interior designer Kelly Hoppen**

The Pearl 65' Yacht is the second product of a collaboration between naval architect Bill Dixon and interior designer Kelly Hoppen. She made her public debut in September at the Cannes

Boat Show. Based on the notion that the exterior styling and technical features attract the men, but the interior's appeal to women is what actually sells the yacht, **Pearl Motor Yachts**, founded in 1997, has made an intelligent choice of designers.

## Exclusions

---

Owner's personal belongings.

## Disclaimer

---

The Company offers the details of this vessel or yacht in good faith but cannot guarantee or warrant the accuracy of this information nor warrant the condition of the vessel. A buyer should instruct his representatives, agents, or his surveyors, to investigate such details as the buyer desires validated. This vessel or yacht is offered subject to prior sale, price change, or withdrawal without notice.

# PHOTOS

**PEARL MOTOR YACHTS 1**



**PEARL MOTOR YACHTS 2**



**PEARL MOTOR YACHTS 3**



**PEARL MOTOR YACHTS 4**



**PEARL MOTOR YACHTS 5**



**PEARL MOTOR YACHTS 6**



### PEARL MOTOR YACHTS 7



### PEARL MOTOR YACHTS 8



### PEARL MOTOR YACHTS



### PEARL MOTOR YACHTS 10



### PEARL MOTOR YACHTS 11



### PEARL MOTOR YACHTS 12



**PEARL MOTOR YACHTS 13**



**PEARL MOTOR YACHTS 14**



**PEARL MOTOR YACHTS 15**



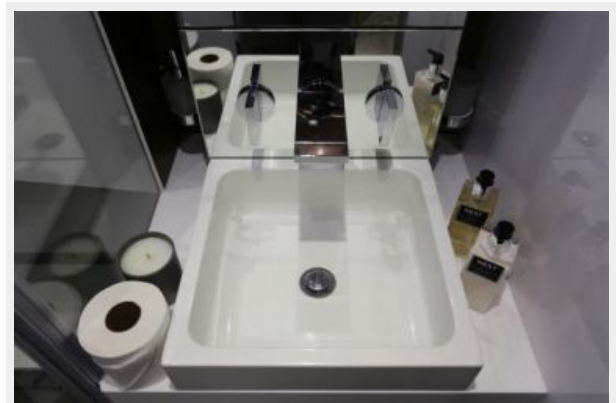
**PEARL MOTOR YACHTS 16**



**PEARL MOTOR YACHTS 17**



**PEARL MOTOR YACHTS 18**



**PEARL MOTOR YACHTS 19**



**PEARL MOTOR YACHTS 20**



**PEARL MOTOR YACHTS 21**



**PEARL MOTOR YACHTS 22**



**PEARL MOTOR YACHTS 23**



**PEARL MOTOR YACHTS 24**



**PEARL MOTOR YACHTS**



**PEARL MOTOR YACHTS 26**



**PEARL MOTOR YACHTS 27**



**PEARL MOTOR YACHTS 28**



**PEARL MOTOR YACHTS 29**



**PEARL MOTOR YACHTS 30**





**PEARL MOTOR YACHTS 31**



**PEARL MOTOR YACHTS 32**



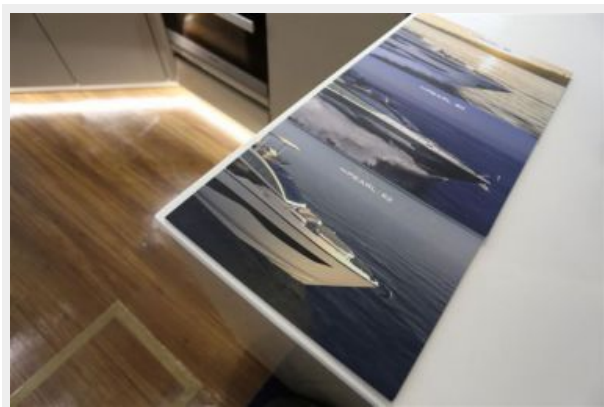
**PEARL MOTOR YACHTS 33**



**PEARL MOTOR YACHTS 34**



**PEARL MOTOR YACHTS 35**



**PEARL MOTOR YACHTS 36**



**PEARL MOTOR YACHTS 37**



**PEARL MOTOR YACHTS 38**



**PEARL MOTOR YACHTS 39**



**PEARL MOTOR YACHTS 40**



**PEARL MOTOR YACHTS 41**



**PEARL MOTOR YACHTS 42**



**PEARL MOTOR YACHTS 43**



**PEARL MOTOR YACHTS 44**



**PEARL MOTOR YACHTS 45**



**PEARL MOTOR YACHTS 46**



**PEARL MOTOR YACHTS 47**



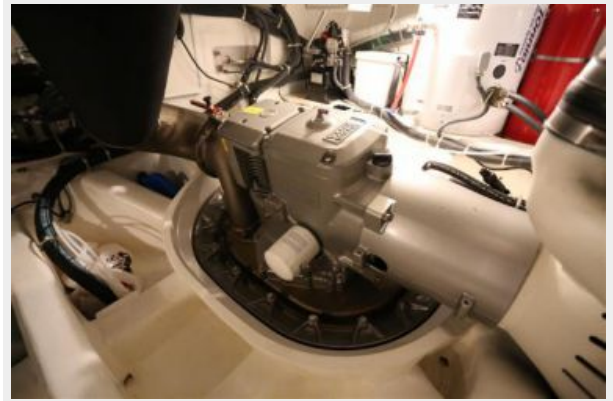
**PEARL MOTOR YACHTS 48**



**PEARL MOTOR YACHTS 49**



**PEARL MOTOR YACHTS 50**



**PEARL MOTOR YACHTS 51**



**PEARL MOTOR YACHTS 52**



**PEARL MOTOR YACHTS 53**



**PEARL MOTOR YACHTS 54**



**PEARL MOTOR YACHTS 55**



**PEARL MOTOR YACHTS 56**



**PEARL MOTOR YACHTS 57**



**PEARL MOTOR YACHTS 58**



**PEARL MOTOR YACHTS 59**



**PEARL MOTOR YACHTS 60**



**PEARL MOTOR YACHTS 61**



**PEARL MOTOR YACHTS 62**



**PEARL MOTOR YACHTS 63**



**PEARL MOTOR YACHTS 64**



**PEARL MOTOR YACHTS 65**



**PEARL MOTOR YACHTS 66**



**PEARL MOTOR YACHTS 67**



**PEARL MOTOR YACHTS 68**



**PEARL MOTOR YACHTS 69**



**PEARL MOTOR YACHTS 70**



**PEARL MOTOR YACHTS 71**



**PEARL MOTOR YACHTS 72**



**PEARL MOTOR YACHTS 73**



**PEARL MOTOR YACHTS 74**



**PEARL MOTOR YACHTS 75**



**PEARL MOTOR YACHTS 76**



**PEARL MOTOR YACHTS 77**

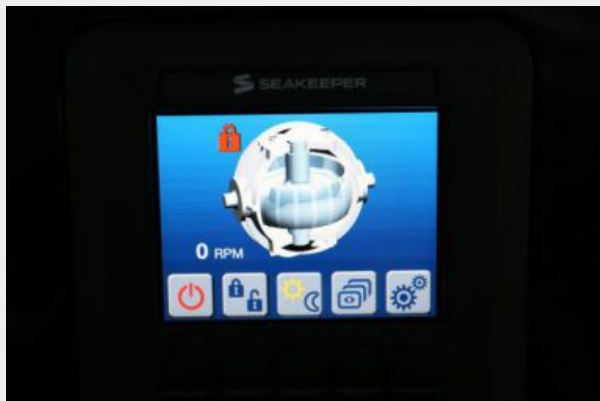


**PEARL MOTOR YACHTS 78**





### PEARL MOTOR YACHTS 79



### PEARL MOTOR YACHTS 80



### PEARL MOTOR YACHTS 81



### PEARL MOTOR YACHTS 82



### PEARL MOTOR YACHTS 83



### PEARL MOTOR YACHTS 84



**PEARL MOTOR YACHTS 85**



**PEARL MOTOR YACHTS 86**



**PEARL MOTOR YACHTS 87**



**PEARL MOTOR YACHTS 88**



**PEARL MOTOR YACHTS 89**



**PEARL MOTOR YACHTS 90**



**PEARL MOTOR YACHTS 91**



**PEARL MOTOR YACHTS 92**



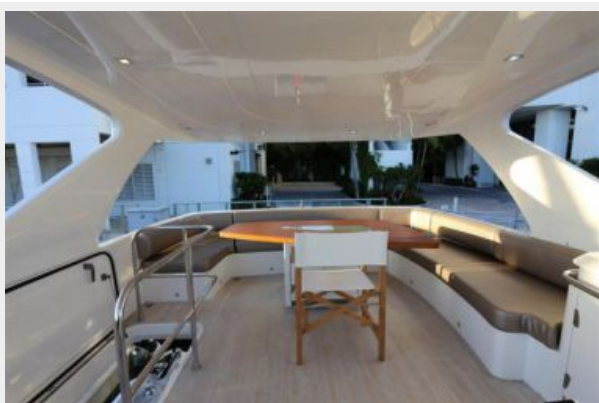
**PEARL MOTOR YACHTS 93**



**PEARL MOTOR YACHTS 94**



**PEARL MOTOR YACHTS 95**



**PEARL MOTOR YACHTS 96**



**PEARL MOTOR YACHTS 97**



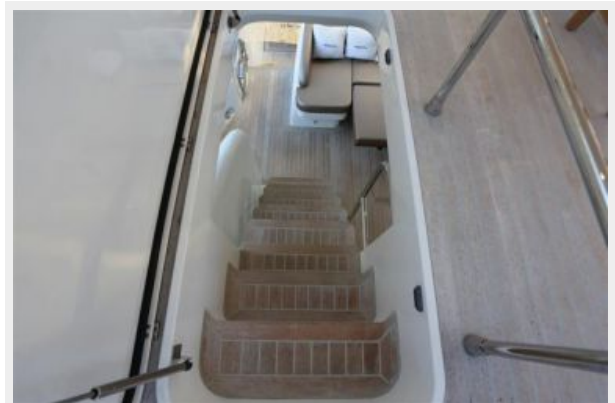
**PEARL MOTOR YACHTS 98**



**PEARL MOTOR YACHTS 99**



**PEARL MOTOR YACHTS 100**



**PEARL MOTOR YACHTS 101**



**PEARL MOTOR YACHTS 102**



**PEARL MOTOR YACHTS 103**



**PEARL MOTOR YACHTS 104**



**PEARL MOTOR YACHTS 105**



**PEARL MOTOR YACHTS 106**



**PEARL MOTOR YACHTS 107**



**PEARL MOTOR YACHTS 108**



---

# CONTACTS

---

Andrey Shestakov, leading yacht broker of the sales department of Shestakov Yacht Sales Inc. Shestakov Yacht Sales Inc., the official representative of the Miami/Fort Lauderdale FL headquarters.

---

## Contact details

---

Email: [andrey@shestakovyachtsales.com](mailto:andrey@shestakovyachtsales.com)

Web: [shestakovyachtsales.com/en/](http://shestakovyachtsales.com/en/)

---

## Telephones

---

USA: +1(954)274-4435

---

## Office hours

---

Monday – Saturday: **9:00 - 21:00** EDT

Sunday: **closed**

---

## Address

---



Harbour Towne Marina, 850 NE 3rd St,  
STE 213, Dania, FL 33004