

DAGNY — BENETEAU



Судостроитель: BENETEAU

Год постройки: 2012

Модель: Крейсерская яхта

Цена: **ЦЕНА ЯХТЫ ПО ЗАПРОСУ**

Местонахождение: United States

Длина общая: 41' 0" (12.50m)

Ширина: 13' 9" (4.19m)

Макс. осадка: 5' 1" (1.55m)

Купить **Dagny — BENETEAU** а также выбрать подходящую вам яхту из нашего **каталога яхт** вам поможет опытный яхтенный брокер Андрей Шестаков. На сегодняшний день компания **Shestakov Yacht Sales Inc.** имеет большое количество яхт в **собственном списке продаж**, а также тесно сотрудничает со всеми крупными яхтенными производителями по всему миру.

Для того чтобы купить яхту **Dagny — BENETEAU** а также проконсультироваться по любому вопросу связанному с покупкой, продажей, чартером яхт позвоните по телефону **+7(918)465-66-44**.

ОГЛАВЛЕНИЕ

ОГЛАВЛЕНИЕ	2
ХАРАКТЕРИСТИКИ	4
Обзор	4
Основная информация	4
Размеры	4
Скорость, вместимость и масса	4
Размещение	5
Корпус и палуба	5
Информация о двигателе	5
ПОДРОБНОЕ ОПИСАНИЕ	6
Overview	6
Исключения	17
Отказ от ответственности	17
ФОТОГРАФИИ	18
097A128E-466B-4BDD-B3CD-AE0762BFFADB_1_105_c	18
5A2B9E76-C005-4A24-B3F8-C7A339EF7B3B_1_105_c	18
DJI_0021	18
DJI_0024	18
IMG_6756	19
DJI_0027	19
43E6B64F-595A-4967-B7F4-6346F7125383_1_105_c	19
IMG_1102	19
IMG_0044	20
FBABCAE5-0969-4763-AB98-6C17E80E824B_1_105_c	20
IMG_1524 2	20
IMG_0875	20
IMG_2836	21
IMG_2842	21

IMG_2851	21
IMG_2876	21
IMG_2877	22
IMG_2889	22
IMG_2894	22
IMG_2898	22
IMG_2902	22
IMG_2903	22
IMG_2907	23
IMG_2905	23
IMG_2915	23
IMG_2917	23
IMG_3953	24
IMG_2920	24
P7140041	24
IMG_2160	24
КОНТАКТЫ	25
Контактная информация	25
Телефоны	25
Время работы	25
Адрес	25

ХАРАКТЕРИСТИКИ

Обзор

Dagny was commissioned and enjoyed on Lake Ontario until the fall of 2015 when her owners relocated and sailed to her current home in St. Augustine, FL. She has been pampered with regular maintenance and shows very well. The bottom gets cleaned monthly and all systems are fully operational.

The Oceanis 41 really set the bar for cruising yachts of this size. On deck, she's spacious and functional. You can comfortably seat and entertain 8 in the cockpit. The decks are clean and easy to navigate. Below the OC 41 will amaze with its room, storage and cozy cabins. The galley works well and with the addition of the pantry area can really accommodate extended cruising.

Dagny is a lovely 2 cabin 1 head version and should be at the top of the list of anyone looking for a capable cruising sailboat!

Основная информация

Тип судна: Крейсерская яхта

Модельный год: 2012

Год постройки: 2012

Страна: United States

Размеры

Длина общая: 41' 0" (12.50m)

Длина по ватерлинии: 37' 10" (11.53m)

Ширина: 13' 9" (4.19m)

Макс. осадка: 5' 1" (1.55m)

Длина привального бруса: 41' 0"
(12.50m)

Скорость, вместимость и масса

Водоизмещение: 18624 Pounds

Вместимость воды: 87 Gallons

Объем топливного бака: 53 Gallons

Размещение

Всего кают: 2

Всего ком. состава: 1

Корпус и палуба

Материал корпуса: Fiberglass

Информация о двигателе

Двигатели: 1

Производитель: Yanmar

Тип двигателя: Sail Drive

Тип топлива: Diesel

ПОДРОБНОЕ ОПИСАНИЕ

Overview

Two Cabin, One Head version, with all factory supplied equipment as listed in the builder's literature (manufacturer's specifications subject to change), with Yanmar 40HP Diesel engine and including the following:

GENERAL SPECIFICATIONS

ARCHITECT / DESIGNERS

- Naval Architect: Finot - Conq And Associates
- Interior design: Nauta Design

EC CERTIFICATE

- Category A - 8 persons - Required
- Category B - 9 persons - Required
- Category C - 10 persons – Required

STANDARD SAIL LAYOUT AND AREA

- L.O.A 40'7"
- Hull length 39'3"
- L.W.L. 37'10"
- Beam 13'9"
- Draft keel - Cast iron 5'1"

- Air draft (max) 61'10"
- Displacement 18,624 lbs
- Fuel capacity 53 US Gal
- Freshwater capacity 87 US Gal
- Engine power 40 HP
- Mainsail (classic) 449 sq ft
- Genoa (104 %) 453 sq ft
- Asymmetric spinnaker 1,400 sq ft
- I 52'6"
- J 16'12"
- P 49'3"
- E 15'5"

STANDARD EQUIPMENT

CONSTRUCTION

- Design made following European Directive requirements and according to EC certification
- Monolithic hull design in polyester
- Monolithic structural hull liner bonded to the hull
- Injection moulded deck in glass fiber/balsa sandwich, covered with non-slip coating
- Hull-deck joint screwed, bonded and trimmed with 1 toerail
- Cast iron keel fixed with bolts and stainless steel backing plates
- Rudder hung with glass compound stock
- White colored hull - Grey metal hull decoration

DECK EQUIPMENT/ RIGGING

- Standard mast 9/10 electro-polished aluminum installed on the deck, 2 sets of spreaders
- Anodized aluminum boom
- Discontinuous stainless steel standing rigging
- 2 Backstays with turnbuckles
- Rigid boom vang with tackle
- Genoa furling system with drum on the deck
- 2 Blocks Stand Up on mainsheet arch
- 2 genoa tracks with piston adjusted traveler cars
- 2 Genoa sheet return blocks
- Rigging run back to cockpit (except boom topping lift)
- Complete running rigging: Main halyard, genoa halyard with clutch on mast and cleat, Boom topping lift with cleat on mast, Mainsheet, 2 Genoa sheets
- 7 Line stoppers
- 2 halyard bags

WINCHES

- 2 Self-tailing genoa sheet winches (H46.2 STC)
- 2 Self tailing coachroof winches (H40.2 STC)
- 2 Winch handles aluminum Speed Grip
- 2 Winch handle holders

SAILS

- Furling genoa with UV protective strip

- In-Mast Furling Mainsail w/vertical battens
- North 3G Cruising Genneker

MOORING – ANCHORING

- Self-bailing chain locker - Clench bolt - Hatch cover roller stainless steel bow fitting with offset roller
- 44# Delta Anchor w/130' of Chain and 150' Rode
- Secondary Fortress Anchor w/25' of Chain and 100' Rode
- 6 Aluminum mooring cleats - Stainless steel deck line protection

SAFETY ON DECK

- 1 Open stainless steel forward pulpit
- 2 Stainless steel aft pushpits
- 1 Outboard engine bracket
- 1 Flag pole socket
- Double lifeline and stainless steel stanchions - Opening to port and to starboard in lifeline

COCKPIT

- Self-draining cockpit
- 2 Cockpit locker
- 2 Lockers in the floor of the cockpit under helm's feet
- 1 Liferaft locker under helm seat, in cockpit bottom (2'7" x 1'4" x 1'11")
- 1 Gas locker for bottle(s) under the port helm seat

- Natural solid wood slatted cockpit benches
- 2 Steering wheel consoles: Stainless steel steering wheels - 900 mm diameter - leather covered - Steering gear at the helm station - metal cable transmission system - Stainless steel handrail - navigation instrument stand (optional instruments) - Glass holder
- 1 Deck hole for access to tiller system + Power supply access hatch
- 1 Emergency Tiller
- 2 Steering compass on binacelle
- Portside engine control and control panel
- Polyester cockpit table - 2 leaves - glove boxes - 2 Large storage space - 2 Stainless steel handrails - 12 V socket - lamp with shade
- Hot/Cold water cockpit shower
- 1 Fixed composite arch - Built-in lighting
- 2 Hinged PMMA companionway doors - Sliding hatch made of PMMA

SWIM DECK / STERN DECK

- Fully opening transom convertible into swim platform (9'4" x 2'6")
- Electrically controlled opening
- Natural solid wood decking on sun deck
- 1 Stainless steel swim/boarding ladder - solid wood steps – folding

INTERIOR

- Woodwork Alpi Mahogany
- Parquet type laminated floors
- Cloth hull spar ceilings in saloon and cabins
- Fabric upholstery

- Marine mattresses in the cabins
- 14,000 BTU A/C w/ Reverse Cycle Heat

COMPANIONWAY

- Headroom: 6'4''
- Wooden saloon companionway with moulded wood hanging steps with nonslip surface
- 2 Stainless steel handrails

SALOON

- Headroom: 6'5''
- U shaped saloon bench - double density foam
- Saloon table in only 1 piece - Varnished wood top with inlay – Aluminum legs
- 4 Matching decorative cushions
- Mirror on starboard bulkhead
- Cupboards - Cubby hole lockers and storage along the hull - Storage under bench seats
- Cubbyholes with stainless steel beading
- 2 Coachroof panoramic windows with curtains
- 2 Hull portholes with curtain
- 2 Opening portholes on coaming in side windows
- 1 Opening deck hatch with shutter / screens

CHART TABLE TO PORT

- Sliding, can be configured with the armchairs - Placed against the forward bulkhead, against the galley or between the 2 mobile seats
- Table with leaf - Moulded wood beading
- Switch panel on bulkhead for access to electrical functions
- 1 White reading light / Red Navigation lens

GALLEY TO PORT

- Headroom: 6'2"
- L-shaped kitchen
- Compact grey laminated worktop of compact synthetic MAX® laminate
- 1 Stainless steel sink 2 rectangular basins - 1 Mixer tap cold water / hot under pressure
- 1 Gas 2 burner - Stainless steel oven on mountings - Stainless steel protection handrail
- 1 Microwave Oven
- 1 ice box 22 US Gal, top opening
- 1 12 V refrigerator 34 US Gal front opening
- Fitted cupboards and closed cubbyholes - Bin
- 1 Lower cupboard: 1 Drawer - 2 shelves
- 1 Opening portlight with curtains in side windows in the coaming
- Storage space along the hull

STARBOARD AFT HEAD COMPARTMENT

- Headroom: 6'1"
- Access through saloon and the starboard aft cabin
- Separate shower - 1 Mixing tap hot water / cold water

- 1 Manual marine toilet
- 1 Rigid holding tank 21 US Gal
- Basin - 1 Mixing tap hot water / cold water
- Washroom cabinet
- 2 Mirrors
- Toilet accessories
- Cupboard
- 1 Opening portlight with curtains inside windows in the coaming

STARBOARD AFT CABIN

- Headroom: 6'2"
- 1 Double bed (6'7" x 5'3" x 4'2")
- Access door to starboard aft washroom
- Cupboards - Hanging locker - Closed cubbyholes
- 1 Bed access sideboard
- 1 Hull porthole with curtain
- 1 Cockpit windows with curtains
- 1 Porthole opening onto cockpit with curtain
- 1 flush deck hatch with blind / screen

Version 2 cabin

AFT-GALLEY (PORT AFT)

- Headroom: 6'2"
- Access via galley

- Large storage area (Numerous cupboards, shelves, Drawers)
- Space for dishwasher (optional) in place of dresser
- Access door to port cockpit locker
- 1 flush deck hatch with blind / screen
- 1 Hull porthole with curtain
- 1 Cockpit windows with curtains

Version 1 Head version

FORWARD CABIN

- Headroom: 6'3"
- Central double bed (6'7" x 6'2" x 1'8")
- Hanger closets - Glove box - Cubby hole locker - Lower cupboard – Stowage under platform
- 1 Dressing table
- 3 flush deck hatches with blinds / screens
- 2 Hull portholes with curtain

Version 2 Heads version

FORWARD CABIN

- Headroom: 6'4"
- Central double bed (6'7" x 6'2" x 1'8")
- Hanging locker - Glove box - Cubby hole locker - Storage drawer – Stowage under platform
- 2 Opening hatches with blind / screens
- 2 Hull portholes with curtain

ENGINE

- Engine Yanmar Diesel 40HP Sail Drive
- Engine control - Control panel in cockpit
- Engine compartment: Soundproofing foam - Ventilation: 1 air intake and 1 air outlet with exhaust fan
- Electromax Alternator 12 V / 140 Ah
- Rotation moulded diesel tank 53 US Gal (under port aft berth) - Electronic gauge - Low level alarm - 1 Deck filler
- Filters: Sea water - Diesel - Decanter
- Three blade FLEXIFOLD Propeller
- Engine access through companionway (opening with 2 gas pistons) - 2 Engine access through aft cabins

ELECTRICITY

- 12 V circuit
- 6 service Lifeline AGM 120Ah Batteries— 1 Engine lifeline AGM 120 Ah Battery
- 1 Charge divider
- 12 V Electrical panel (Fuses - Voltmeter - Water gauge - Fuel gauge - Battery warning - Fuel warning - Water warning)
- 1 12 V Sockets
- Lighting: Overhead lights - Reading lights - Reading light White/red
- Navigation lights: 1 Forward and aft navigation lights - 1 Engine navigation light / Crosstree light forward of mast - 1 Mooring light on masthead
- Wire runs for options cables

PLUMBING

- 1 rotomolded freshwater tank (87 US Gal Forward cabin) - 1 Deck filler
- Water pressure system - Expansion tank - Inline filter
- Water heater / 11 US Gal (engine run)
- 1 Rigid holding tank 21 US Gal (Starboard aft head compartment)
- Delayed shower draining and electric shower drain pumps
- 1 Electric bilge pump - 1 Manual bilge pump
- 1 Electric ice box drain pump

Propane GAS

- 1 Gas bottle storage in the cockpit (1'1" x 1'9")
- 1 Regulator and solenoid

AVANTAGE TRIM LEVEL OPTION PACKAGE:

- 2 Simrad Graphic Cockpit Displays IS 20 (Log, Speedometer, Depth sounder)
- 2 Simrad Graphic Cockpit Displays Wind IS 20 (Wind Speed & Direction)
- Electric Anchor Windlass with Remote control
- Additional Bow Roller & Stainless Steel Bobstay for Asymmetric Spinnaker tack
- Hot & Cold Cockpit Shower
- New FUSION MS RA770 Stereo System, Wi-Fi, Blue Tooth, w/Remotes
- Cabin & Cockpit Speakers
- LED Navigation lighting
- LED Interior lighting
- LED Indirect lighting in Salon
- Full 110 V Dockside Power System with Cord
- 60 Amp Battery Charger
- 4 Extra 110 Amp Service Batteries, Total of Six House Batteries

INDIVIDUAL OPTIONS & SELECTIONS:

- Shoal Draft Keel 5'1"
 - Two Cabin, One Head Layout with Butler's Pantry
 - Salon Upholstery Tempo Silver
 - Mattresses in Sleeping Cabins
 - 14,000 BTU A/C w/ Reverse Cycle Heat
 - NEW B&G Zues3 12" Color Touchscreen LED GPS/Chartplotter in Cockpit w/Chartchip
 - B&G 4G Radar Mounted on Mast
 - Simrad PC Interface at Nav Station
 - Simrad Autopilot
 - Simrad VHF at Nav Station
 - Simrad VHF Wireless Remote at Helm
 - Simrad AIS (automatic vessel identification system)
 - In-Mast Roller Furling Mainsail with Vertical Battens
 - 12V Freezer in Place of Icebox (Separate from 12V Refrigerator)
 - 110V Microwave Oven
 - Geared Three Blade Flexifold Propeller
 - Port Electric Cabintop Winch Harken #46
 - Corian Countertop Upgrade
-
- Anti-Fouling Bottom Paint over epoxy primer
 - Docking Package
 - Safety Package
 - Anchor Package

Исключения

При продаже яхты исключаются личные вещи владельца.

Отказ от ответственности

Компания предоставляет описание судна или яхты добросовестно, но не может гарантировать точность этой информации, а также не ручается за техническое состояние. Покупатель должен проинструктировать своих агентов или оценщиков исследовать представленную информацию более подробно, по собственному желанию. Продажа судна или яхты, изменение цены или снятие с продажи будет происходить без предварительного уведомления.

ФОТОГРАФИИ

5A2B9E76-C005-4A24-B3F8-
C7A339EF7B3B_1_105_c



097A128E-466B-4BDD-B3CD-
AE0762BFFADB_1_105_c



DJI_0021



DJI_0024



DJI_0027



IMG_6756



IMG_1102



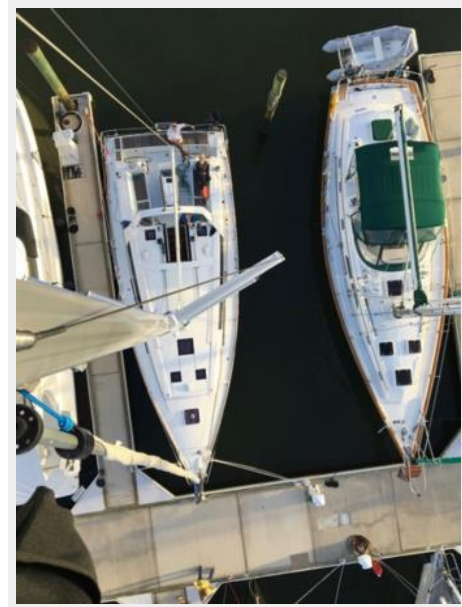
43E6B64F-595A-4967-B7F4-6346F7125383_1_105_c



FBABCAE5-0969-4763-AB98-
6C17E80E824B_1_105_c



IMG_0044



IMG_1524 2



IMG_0875



IMG_2836



IMG_2842



IMG_2851



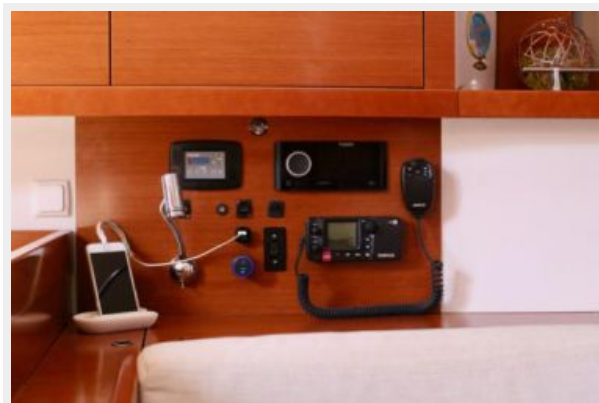
IMG_2876



IMG_2877



IMG_2889



IMG_2894



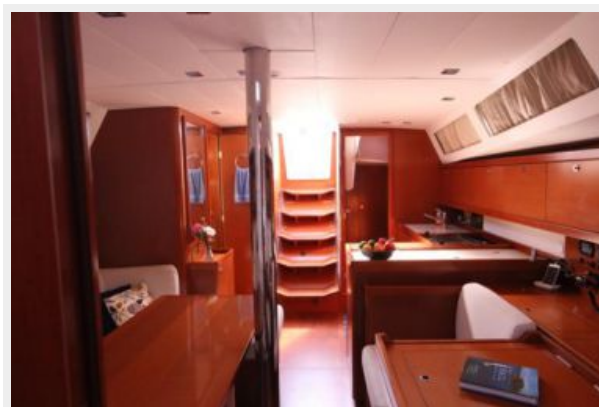
IMG_2898



IMG_2902



IMG_2903



IMG_2905



IMG_2907



IMG_2915



IMG_2917



IMG_2920



IMG_3953



P7140041



IMG_2160



КОНТАКТЫ

Андрей Шестаков (Andrey Shestakov) – ведущий яхтенный брокер отдела продаж яхт и судов компании Shestakov Yacht Sales Inc. Официальный представитель Shestakov Yacht Sales Inc. для русскоговорящих клиентов в центральном офисе компании в Майами/Форт Лодердейл/Флорида/США.

Контактная информация

Email: andrey@shestakovyachtsales.com

Web: shestakovyachtsales.com

Телефоны

Краснодарский край: **+7(918)465-66-44**

США, Майами, Флорида: **+1(954)274-4435**

Время работы

Понедельник – Суббота: **9:00 - 21:00**
EDT

Воскресенье: **Закрето**

Адрес



Harbour Towne Marina, 850 NE 3rd St,
STE 213, Dania, FL 33004