

BLADE — MMGI SHIPYARD



Builder: MMGI SHIPYARD

Year Built: 2009

Model: Motor Yacht

Price: PRICE ON APPLICATION

Location: Monaco

LOA: 144' 5" (44.00m)

Beam: 26' 3" (8.00m)

Cruise Speed: 12 Kts. (14 MPH)

Max Speed: 30 Kts. (35 MPH)

Our experienced yacht broker, Andrey Shestakov, will help you choose and buy a yacht that best suits your needs **BLADE — MMGI SHIPYARD** from our catalogue. Presently, at Shestakov Yacht Sales Inc., we have a wide variety of yachts available on our sale's list. We also work in close contact with all the big yacht manufacturers from all over the world.

If you would like to buy a yacht **BLADE — MMGI SHIPYARD** or would like help answering any questions concerning purchasing, selling or chartering a yacht, please call **+1(954)274-4435**

TABLE OF CONTENTS

TABLE OF CONTENTS	2
SPECIFICATIONS	4
Overview	4
Basic Information	4
Dimensions	4
Speed, Capacities and Weight	4
Accommodations	4
Hull and Deck Information	5
Engine Information	5
DETAILED INFORMATION	6
BLADE	6
Exclusions	6
Disclaimer	6
PHOTOS	7
image--002	7
image--000	7
image--003	7
image--004	7
image--005	7
image--006	7
image--007	8
image--008	8
image--009	8
image--010	8
image--011	8
CONTACTS	9
Contact details	9
Telephones	9

Office hours

9

Address

9

SPECIFICATIONS

Overview

Blade is one of the kind superyachts recognized all over the world. The straight bow, bold hull design, luxury interior and innovative solutions. Built by the commercial shipyard MMGI in 2009, she still meets the highest industry standards, as confirmed by a successful 10-year annual survey in 2020.

Basic Information

Category: Motor Yacht

Sub Category: Displacement

Model Year: 2009

Year Built: 2009

Refit Year: 2020

Country: Monaco

Cockpit: Yes

Dimensions

LOA: 144' 5" (44.00m)

Beam: 26' 3" (8.00m)

Speed, Capacities and Weight

Cruise Speed: 12 Kts. (14 MPH)

Max Speed: 30 Kts. (35 MPH)

Displacement: 440924.524 Pounds

Gross Tonnage: 289 Pounds

Water Capacity: 1585.032312 Gallons

Fuel Capacity: 7925.16156 Gallons

Accommodations

Total Cabins: 4

Sleeps: 9

Crew Sleeps: 8

Hull and Deck Information

Hull Material: Aluminum

Deck Material: Teak

Hull Configuration: Deep Vee

Exterior Designer: A Lab

Interior Designer: Michela Reverberi

Engine Information

Engines: 2

Manufacturer: Caterpillar

Model: 1800 HP

Engine Type: Inboard

Fuel Type: Diesel

DETAILED INFORMATION

BLADE

Blade is fast, innovative & exceptional:

- her cruising speed is 16 knots, max speed - 30 knots thanks to 2 diesel engines Caterpillar C32 of 1,925 hp each, 1 Vericor gas turbine of 4,400 hp;
- fully accessible for a wheelchair & baby stroller: massive ramp, no steps, and an elevator from the master cabin to the sky lounge;
- full-height windows at the main deck and high of ceilings on the main & lower decks is 2.2m;
- her garage on the bow opens both sides like the Tower bridge and holds a 7m tender and water toys.

Her luxurious minimalist interior exudes modern elegance while her smart layout makes for the perfect place to relax and socialise guests. There are 5 guest cabins on board with its own bathroom, including a full beam master suite with huge windows on both sides.

New sales conditions are available! Financing structure approved for MY BLADE PURCHASE:

- The first installment is 30%
- 5% interest rate per annum
- Financing for up to 5 years

Detailed information is on the website:

Exclusions

Owner's personal belongings.

Disclaimer

The Company offers the details of this vessel or yacht in good faith but cannot guarantee or warrant the accuracy of this information nor warrant the condition of the vessel. A buyer should instruct his representatives, agents, or his surveyors, to investigate such details as the buyer desires validated. This vessel or yacht is offered subject to prior sale, price change, or withdrawal without notice.

PHOTOS

image--000



image--002

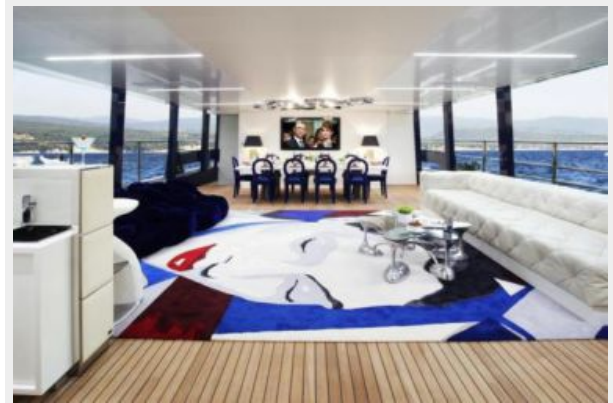


image--003



image--004



image--005



image--006

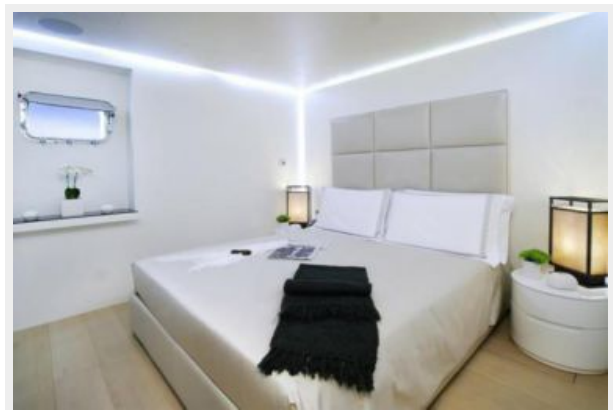


image--007

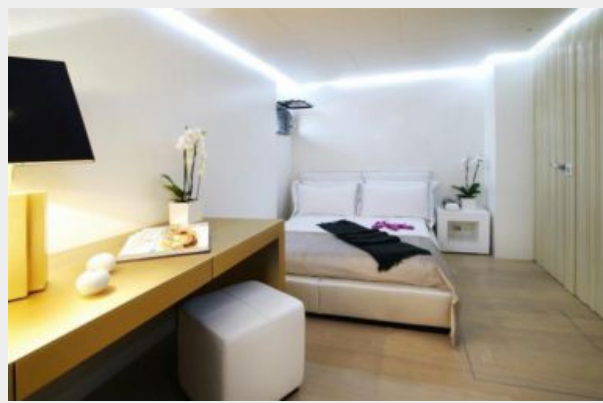


image--008



image--009



image--010



image--011



CONTACTS

Andrey Shestakov, leading yacht broker of the sales department of Shestakov Yacht Sales Inc. Shestakov Yacht Sales Inc., the official representative of the Miami/Fort Lauderdale FL headquarters.

Contact details

Email: andrey@shestakovyachtsales.com

Web: shestakovyachtsales.com/en/

Telephones

USA: +1(954)274-4435

Office hours

Monday – Saturday: **9:00 - 21:00** EDT

Sunday: **closed**

Address



Harbour Towne Marina, 850 NE 3rd St,
STE 213, Dania, FL 33004