

## BIG RED — HINCKLEY



**Builder:** HINCKLEY

**Year Built:** 2016

**Model:** Cruising Yacht

**Price:** PRICE ON APPLICATION

**Location:** United States

**LOA:** 55' 0" (16.76m)

**Beam:** 17' 9" (5.41m)

**Max Draft:** 2' 11" (0.89m)

**Cruise Speed:** 30 Kts. (35 MPH)

**Max Speed:** 37 Kts. (43 MPH)

Our experienced yacht broker, Andrey Shestakov, will help you choose and buy a yacht that best suits your needs **Big Red — HINCKLEY** from our catalogue. Presently, at Shestakov Yacht Sales Inc., we have a wide variety of yachts available on our sale's list. We also work in close contact with all the big yacht manufacturers from all over the world.

If you would like to buy a yacht **Big Red — HINCKLEY** or would like help answering any questions concerning purchasing, selling or chartering a yacht, please call **+1(954)274-4435**

# TABLE OF CONTENTS

TABLE OF CONTENTS	2
SPECIFICATIONS	3
Overview	3
Basic Information	3
Dimensions	3
Speed, Capacities and Weight	3
Accommodations	3
Hull and Deck Information	4
Engine Information	4
DETAILED INFORMATION	5
Introduction	5
Hull and Deck	5
Cockpit	7
Pilothouse	8
Interior Accommodations	8
Mechanical	11
Additional equipment	12
Exclusions	13
Disclaimer	13
PHOTOS	14
CONTACTS	23
Contact details	23
Telephones	23
Office hours	23
Address	23

# SPECIFICATIONS

## Overview

*Big Red* is the newest Talaria 55 available on the brokerage market and without question the most highly optioned MKII ever built. With over \$1,000,000.00 in options, she was specified and built for an exacting owner with only the finest appointments, finishes and technology in mind. This Hinckley 55 is one of very few fitted with upgraded MAN 12V-1400 hp engines and Seakeeper 9 gyro stabilizer allowing for an exceptional ride at all speeds.

Big Red conveys with the Hinckley "CPO" warranty providing extended peace of mind to her next owner for many years to come.

## Basic Information

**Category:** Cruising Yacht

**Model Year:** 2016

**Year Built:** 2016

**Country:** United States

## Dimensions

**LOA:** 55' 0" (16.76m)

**LWL:** 51' 0" (15.54m)

**Beam:** 17' 9" (5.41m)

**Max Draft:** 2' 11" (0.89m)

## Speed, Capacities and Weight

**Cruise Speed:** 30 Kts. (35 MPH)

**Max Speed:** 37 Kts. (43 MPH)

**Displacement:** 53700 Pounds

**Water Capacity:** 200 Gallons

**Holding Tank:** 100 Gallons

**Fuel Capacity:** 1200 Gallons

## Accommodations

**Total Cabins:** 1

---

## Hull and Deck Information

---

**Hull Material:** Carbon Composite

## Engine Information

---

**Engines:** 2

**Manufacturer:** MAN

**Engine Type:** Inboard

**Fuel Type:** Diesel

---

# DETAILED INFORMATION

---

## Introduction

---

*Big Red* is the newest Talaria 55 available on the brokerage market and without question the most highly optioned MKII ever built. With over \$1,000,000.00 in options, she was specified and built for an exacting owner with only the finest appointments, finishes and technology in mind. This Hinckley 55 is one of very few fitted with upgraded MAN 12V-1400 hp engines and Seakeeper 9 gyro stabilizer allowing for an exceptional ride at all speeds.

Big Red conveys with the Hinckley “CPO” warranty providing extended peace of mind for her next owner.

Key Features include:

- iPad controlled custom AV entertainment system with AC ventilated central distribution locker
- Opacmare swim platform with underwater lights
- Cockpit AC boxes removed to give a more open cockpit
- Ocean Air Skysol pleated shades in pilothouse windows that lower electrically
- Ocean Air Skyscreens on all overhead hatches
- Custom detailed Corian countertops in galley and varnished cherry counter in owner’s cabin
- Raised panel cherry interior passage & cabinet doors
- Cabinet drawers and drop fronts are bevel cut solid cherry wood
- Rheostat cabin lighting throughout provides enhanced ambiance
- Reverse-cycle heat/air-conditioning in pilothouse and interior offers additional cooling and heating comfort.
- Washer and Dryer
- Flybridge: The flybridge includes custom hard top with enclosure, an acrylic windscreen, passenger seating, and a helm station with custom dual Stidd helm seats.
- Cockpit: Molded in entry steps and a ladder to the flybridge, aft-facing settee, and a transom walk-thru access to a swim platform.
- Pilothouse: Gloss varnished teak and tulipwood sole with cabin sole covers, two powered Stidd helm seats forward, built in settee, and an entertainment center with a TV on an electric lift hidden in the cabinetry.

## Hull and Deck

---

- “Claret” Awlgrip topsides
- Light Cream gelcoat deck with molded-in non-skid
- Black bottom

**Hull:** Hinckley DualGuard® Composite Construction- Kevlar®/E-glass outer skin. Aircraft grade end grain balsa below the waterline. Carbon fiber inner skin. Laminated using Seaman Composite Resin Infusion Molding Process (SCRIMP®).

**Deck:** E-glass outer and inner skin with aircraft grade end grain balsa and closed cell foam core - laminated using Seaman Composite Resin Infusion Molding Process (SCRIMP®).

These materials and building techniques provide for a superior surface finish, greater resistance to osmosis, high degree of stiffness & stiffness/weight ratios, and greater hull strength against impact damage and thermal insulation.

- Oversized Opacmare Transformer 4 step model swim platform with teak decking and all non-skid surfaces painted to match deck and stainless-steel half round. Swim platform lowers hydraulically to launch a tender, provide access for scuba diving, and is wonderful for swimming off as platform can be lowered various levels in the water. Also, transforms to a passarelle making reaching hard to access fixed piers with ease.
- Non-metallic composite thru-hull fittings with ball valve seacocks are below waterline and above the waterline where appropriate. Bronze seacocks, thru-hull fittings and sea strainers on propulsion engines.
- Rub rail has stainless steel half-round on fiberglass molding.
- Underwater lights (3) under swim platform - Switch at pilothouse helm

## DECK FEATURES

- Molded non-skid gelcoat deck
- Tapered varnished teak toe rails with Hinckley profile
- Anchor Locker: Molded into the foredeck, with hinged and gas-spring assisted hatch.
- Two large storage lockers on foredeck
- Chocks: Two (2) Hinckley open bow chocks, type 316L stainless steel. Four (4) Hinckley closed chocks located at fore and aft spring cleats.
- Mooring Cleats: Eight (8) cleats type 316 stainless steel
- Eyebrow: Varnished teak molding around cabin
- Bow Rail: Closed single rail 30" high, 1 1/4" diameter, type 316L stainless steel
- Handrails: Stainless steel handrails mounted on forward cabin top and pilothouse top (wrap around style).
- Custom painted teak handrails on port and starboard side of pilothouse for ease of transiting side decks. Handrails are painted to match the deck color
- Custom Hinckley mast (painted to match deck) holds anchor/steaming light
- KVH TrackVision M5 satellite dome on flybridge top, painted to match deck color

- Ports in cabin house: 5 opening ports- one in guest shower, one in master head, one in master shower, and two in galley. Opening ports have screens. 5 fixed ports- three in guest cabin, and two in master cabin. Fixed ports have varnished Cherry ring around them. All ports have drop down-style curtains of Norbar Venita White Wash.
- Polished stainless steel ManSHIP hatches on cabin top with (5) smoke gray tinted hatches. All have SkyScreen screens and blinds.
- Fender Storage: Provided for six (6) fenders, four (4) of which remain attached to boat and stored for easy deployment. Two (2) remaining fenders store in custom holders under cockpit hatch
- Additional wichard folding padeyes and chafe strips to provide additional positioning of fender and docklines
- Starboard transom door gives access to the swim platform.
- Bow burgee: varnished teak staff on bow rail.
- Ensign: Stern mounted 5' varnished teak staff with flush socket
- Overboard direct drainage scuppers

## Cockpit

---

MKII styled cockpit with salon "patio" and integrated, molded L-settee. Access to and from side deck provided by coaming gate on port and starboard sides.

### Cockpit features:

- Large molded L-settee with cushioned bottom and back cushions covered in Luxor Leather with Seasand Red piping.
- Upper cockpit amenity with Vitrifrigo refrigerator and ice maker
- Gelcoat covered cockpit coamings with varnished teak coaming caps.
- Cockpit shower with hot/cold mixing valve with shower wand near transom door opening
- Cockpit fresh water deckwash
- Two Glendinning powered shore cord reels mounted at transom w/wireless remotes
- Courtesy Lighting: Lights under each cockpit side-deck, and on the stairs between the cockpit and pilothouse.
- Fender storage on underside of deck hatch.
- Low wattage lighting on dimmer under starboard side deck

---

## Pilothouse

---

- Salon Entry Doors: Polished stainless-steel framed doors with four (4) full height curved tinted tempered glass panels.
- L-shaped built-in settee to port and starboard with upholstered bottom and back cushions in Sunbrella Canvas White with Canvas Jockey piping. Chart storage is provided in large locker outboard of settee.
- Salon Table: Varnished cherry table to starboard. Converts to additional berth with filler cushion. Pedestal is Stidd manual retracting that is powder coated to match other Stidd pedestals.
- Salon Windows: MKII style-Three (3) fixed forward windows with laminated safety glass and fully concealed Stainless-Steel frames. Two (2) Side window assemblies with powered sliding center section and fully concealed Stainless-Steel frames.
- Salon windows have grey tint while forward windows and aft enclosure have no tint
- Salon Window Covers: electric pleated blind system for side windows in a sand color
- Roman shade style curtains on aft entry doors. Curtains are electrically actuated with remote control
- Pilothouse front windows have outside snap-on Stamoid fabric shade covers

### Additional Pilothouse Details:

- Satin varnished cherry with gloss highlights. Highlights are found on all door and window trims, baseboards and bulkhead trims, corner posts, moldings, and overhead battens
- Varnished teak and tulipwood pilothouse sole
- Sound suppression overhead material with oversized varnished Cherry battens.
- Overhead halogen lamps on dimmers provide lighting.
- Reading lamps port and starboard aft provide additional lighting
- Low wattage lighting which is dimmable under L-settee
- Overhead varnished teak handrail running fore and aft
- Sunbrella cabin sole covers for pilothouse sole

### FORWARD PILOTHOUSE AREA:

#### Helm Station (Starboard)

Two Stidd helm seats with Parchment Luxor Leather cushions and Imperial piping on stainless steel pedestals. Seats are electrical up-down, forward and aft. Both seats have Stidd X-2 footrests.

---

## Interior Accommodations

---



## Entertainment Equipment:

- Samsung 40" LED TV in pop up cabinet
- iPad controlled custom AV entertainment system with AC ventilated central distribution locker
- Cable and telephone inlet for shore side phone and cable.

## Throughout interior:

- Satin varnished Cherry with gloss highlights. Gloss highlights are found on all door and window trims, baseboards and bulkhead trims, corner posts, moldings, and overhead battens
- Teak and Tulipwood soles
- Lowe custom Hardware for drawer and cabinet pulls

## GALLEY (Port)

Stepping down from the pilothouse, the galley is to port.

- Cuisinart convection oven microwave (CMW-200 SS)
- Corian Sandalwood Countertop with undermounted single, deep sink with brushed stainless steel finish
- Hot and cold fresh water system with Grohe single lever faucet
- Trash storage to be tilt-out style located below the galley sink
- Recycle storage is in extended pull drawer which slides inboard under companionway steps. Holds 4 14qt waste baskets
- (2) Sub-Zero drawer ID-24R refrigerator
- Multiple 110 VAC outlets for galley appliances
- Custom storage drawer at base of companionway steps provides storage for galley equipment. Drawer slides under inboard guest cabin berth
- Bar area at forward end of galley with Dometic 6 bottle wine cooler. Aft of wine cooler is storage drawer with foam inserts to hold wine and liquor bottles.
- Glass storage for bar area is outboard and features custom wine storage from overhead of locker and low-ball glass storage below.
- Two opening ports
- Dimmable low wattage lighting under toe kicks in galley

## GUEST/DAY HEAD

Large head and shower. Head area is satin finished cherry with gloss highlights.

- Varnished high gloss Cherry countertop with undermounted stainless steel sink. Grohe single lever faucet.
- Sole in head is “teak decking style”
- Sealand Vacu-flush marine toilet plumbed directly to 100-gallon holding tank.
- Full length mirror on back of door between head and guest cabin. This allows mirror to function in either place.
- Cherry framed mirror on bulkhead aft of sink
- Towel bars in shower and head
- Shower curtain and rod
- Opening portlight

## MASTER STATEROOM

The spacious owner’s stateroom is MKII style with aft facing berth and large hanging lockers aft. Door to master cabin is aft to provide hallway effect for cabin thereby making it feel even larger.

- Custom desk to Starboard with swing-out stool
- Ample storage is provided via hanging lockers aft and outboard port and, lower drop down storage lockers port and starboard, and upper storage lockers port and starboard
- Queen sized mattress is custom Handcrafted Mattress Company System Five. 9.5” medium plush pillowtop innerspring mattress. Mattress is hinged to make access to storage below.
- Mattress is covered with fitted coverlet of Sunbrella Canvas with Canvas Jockey Red piping
- Safe installed under master bunk
- Custom alcoves port and starboard outboard of bunk for small items
- 32” Samsung Smart Slim LED monitor recessed into port bulkhead.
- Large overhead hatch with Skyscreen blind and screen
- Sound-absorbing panels added to chine area of hull area to reduce water noise
- Multiple 110 VAC outlets

## MASTER HEAD

The large en-suite master head is aft to port of the master stateroom featuring separate shower. Head area is satin finished cherry with gloss highlights.

- Head countertop is gloss varnished cherry with undermounted polished Stainless-Steel

sink and Grohe single lever faucet

- Sole in head is “teak decking style”
- Sole in shower is molded non-skid for ease of cleaning
- Sealand Vacu-flush marine toilet plumbed directly to 100-gallon holding tank.
- Full length mirror on back of door.
- Cherry framed mirror on bulkhead aft of sink
- Towel bars in shower and head
- Shower curtain and rod
- Opening portlight in head and shower
  - Overhead opening hatch for additional natural light
  - Storage outboard of head, sink and in shower
  - Common wire bonding with a minimum branch wire size of #8 AWG per ABYC.
  - Start Batteries: Four (4) BCI 4D AGM batteries for main engines and generator.
  - House: Four (4) BCI 8D AGM batteries for the main house bank.
  - Heavy-duty battery switches for both port and starboard engines, with the ability to parallel the Starting Batteries.
  - Mastervolt 12/24Volt start battery isolator
  - Two (2) Balmar® alternators - 80-amp 24-Volt DC.
  - Two (2) 24-Volt-DC battery chargers. One (1) 100-amp for House bank and one (1) 60-amp for starting bank.
  - 24-Volt lighting
  - MasterVolt 24-volt-DC to 110-volt-AC inverter

## Mechanical

**GENERATOR:** Onan 17 Kw generator rated for 240-Volts AC, is mounted in a sound shield and is outfitted with DC voltmeter, water temperature gauge, oil pressure gauge, hour meter, control switch, shutdown bypass switch and pre-heat.

### MECHANICAL:

- Twin MAN V12-1400 hp 12-cylinder Vee diesel common rail engines
- Twin Disc transmissions with reduction gear ratio
- Two MAN engine displays
- Each engine features on demand, fully paralleled PTO redundancy to provide hydraulic power for steering, bow thruster, and windlass
- Two (2) 600 gallon fuel tanks
- Racor in-line Fuel/Air Separators
- Racor Dual Fuel Filters for each engine-Model 75/1000MAX with remote water alarm
- Racor Fuel Filter- Model 500 MA for generator with remote water alarm
- Baffled and insulated engine air intakes
- Underwater exhaust system - with low speed by-pass.
- Algae-X fuel purification system for both engines and generator

- Racor Remote Diesel Fuel Polishing System. Capacity of 150 GPH
- Hinckley JetStick II which integrates forward and aft motion of the boat, steering, and the bow thruster into a single joystick control
- Hinckley wireless remote for JetStick
- Sidepower hydraulic 25-hp bow thruster
- Seakeeper gyro-stabilizer-Seakeeper Model 9
- Autoglide Trim Tab system- automatic trim tab control system in the world. Integrates data, including engine speed, helm position and GPS to calculate the optimum running angle
- Marine Air Systems reverse-cycle marine air conditioning – three (3) 24,000 BTU chilled water system with four (4) separate air handlers for the salon, galley and heads, guest cabin and owner's stateroom.
- On-board water filtration- Mighty Pure in line ultraviolet water purifier. System also includes inline filters at each sink faucet and each icemaker.
- Engine Room Insulation: Insulated with Mylar-faced foam/composite insulation, with metal covering on visible surfaces
- Four (4) cage protected lights
- Oil Transfer Pump - reversible, 24-Volt DC - for main engines, transmissions, and generator.
- Fresh hot and cold pressurized water, fed by 24-VDC Sure-Flo Smart Sensor® main and back-up pumps supplying galley, shower, head and cockpit shower.
- Automatic 24-volt DC sump pumps for showers, and air-conditioning condensate.
- (3) Rule® 24-volt DC electric 3500-GPH bilge pumps with ULTRA automatic float switches.
- Saltwater deck wash: 24-volt DC, 10-GPM deck wash pump with hose connection in anchor locker
- 17-gallon water heater - marine insulated stainless steel
- 100-gallon aluminum holding tank
- 200-gallon stainless steel fresh water tank
- Fireboy fire protection system with automatic engine and generator shut down system
- High water bilge alarm
- Emergency bilge pump activated at helm station

## Additional equipment

---

### Ground Tackle System:

- Hydraulic windlass mounted in custom anchor well
- Custom 316L stainless steel bow roller with primary anchor
- 55-lb Delta primary anchor with 50' x 3/8" Grade 40 galvanized chain + 200' x 3/4" three-strand nylon rode.
- 40-lb Fortress FX55 Secondary: anchor with chain and rope rode.
- Fresh and salt water wash down faucets in anchor locker

---

## Safety and Deck Equipment:

- Horn - Kahlenberg 24-Volt DC dual-trumpet air horn with switch at helm
- Searchlight - 24 Volt-DC with remote at helm
- (10) Lifejackets - (8) adult and (2) children
- (4) Dock lines
- (6) Fenders with fleece covers and Wichard snap hooks
- Navigation lights
- Coast Guard safety equipment
- (4) Fire Extinguishers: 2-lb. Type B-1 fire extinguishers for class A, B, and C fires.
- Various Stamoid deck covers

## Exclusions

---

Owner's personal belongings.

## Disclaimer

---

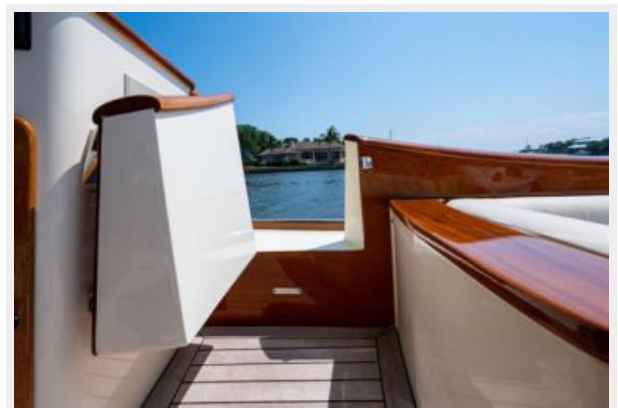
The Company offers the details of this vessel or yacht in good faith but cannot guarantee or warrant the accuracy of this information nor warrant the condition of the vessel. A buyer should instruct his representatives, agents, or his surveyors, to investigate such details as the buyer desires validated. This vessel or yacht is offered subject to prior sale, price change, or withdrawal without notice.

# PHOTOS

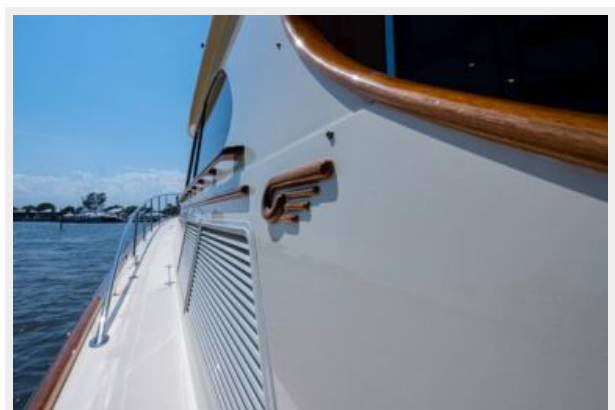
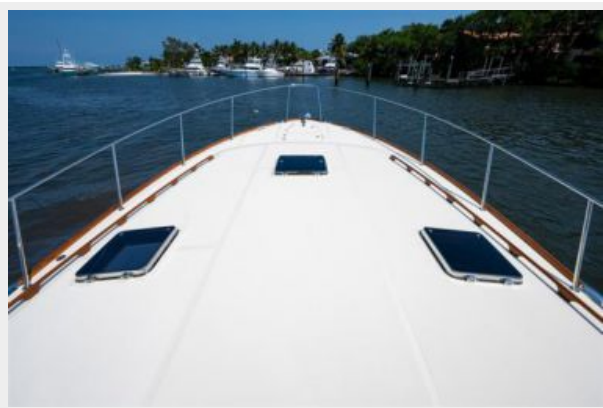






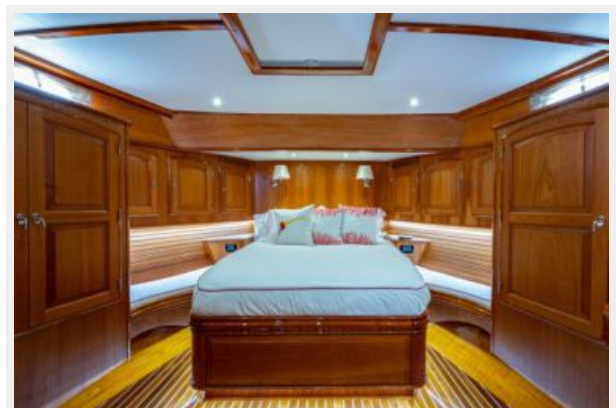
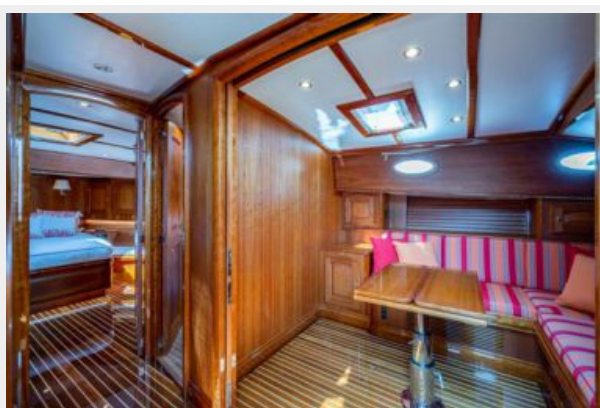








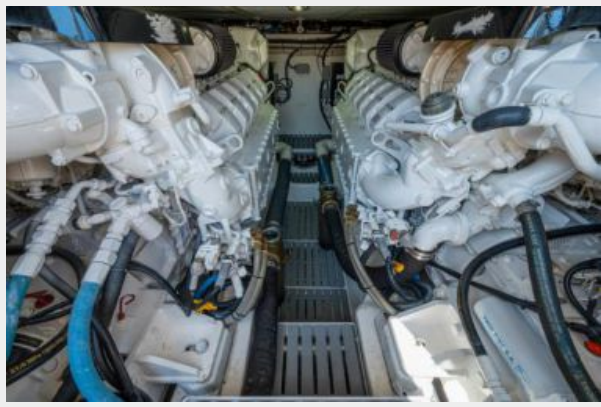












# CONTACTS

---

Andrey Shestakov, leading yacht broker of the sales department of Shestakov Yacht Sales Inc. Shestakov Yacht Sales Inc., the official representative of the Miami/Fort Lauderdale FL headquarters.

## Contact details

---

Email: **andrey@shestakovyachtsales.com**

Web: [shestakovyachtsales.com/en/](http://shestakovyachtsales.com/en/)

## Telephones

---

USA: **+1(954)274-4435**

## Office hours

---

Monday – Saturday: **9:00 - 21:00 EDT**

Sunday: **closed**

## Address

---



Harbour Towne Marina, 850 NE 3rd St,  
STE 213, Dania, FL 33004