

WHITE AND SILVER — MAGNUM MARINE



Builder: MAGNUM MARINE

Year Built: 2000

Model: Motor Yacht

Price: PRICE ON APPLICATION

Location: Italy

LOA: 85' 0" (25.91m)

Beam: 19' 4" (5.89m)

Min Draft: 4' 5" (1.35m)

Max Draft: 0' 0" (0.00m)

Cruise Speed: 35 Kts. (40 MPH)

Max Speed: 50 Kts. (58 MPH)

Our experienced yacht broker, Andrey Shestakov, will help you choose and buy a yacht that best suits your needs **WHITE AND SILVER — MAGNUM MARINE** from our catalogue. Presently, at Shestakov Yacht Sales Inc., we have a wide variety of yachts available on our sale's list. We also work in close contact with all the big yacht manufacturers from all over the world.

If you would like to buy a yacht **WHITE AND SILVER — MAGNUM MARINE** or would like help answering any questions concerning purchasing, selling or chartering a yacht, please call **+1(954)274-4435**

TABLE OF CONTENTS

TABLE OF CONTENTS	2
SPECIFICATIONS	4
Overview	4
Basic Information	4
Dimensions	4
Speed, Capacities and Weight	5
Accommodations	5
Hull and Deck Information	5
Engine Information	5
DETAILED INFORMATION	6
SOME MAGNUM OWNERS	6
Exclusions	7
Disclaimer	7
PHOTOS	8
Magnum-801	8
magnum801-4	8
0012	8
0005	8
_MOT0558	8
Magnum 80-5	8
_MOT0547	9
_MOT0550	9
_MOT0538	9
_MOT0542	9
_MOT0582	9
_MOT0584	9
IMG_1705	10
IMG_1703	10

IMG_1702	10
IMG_1694	10
IMG_1701	10
_MOT0587	10
magnum-80-lay out	11
CONTACTS	12
Contact details	12
Telephones	12
Office hours	12
Address	12

SPECIFICATIONS

Overview

" There's not much difference between a magnum and a Rolls Royce. Both vehicles set standards that other builders find impossible to meet" (**Mike Smith, Boating Magazine**)

"From our experience, the magnum is structurally, mechanically, and electrically superior to any boat in its class."

(McDonnell Douglas, Fighter Aircraft Manufacturer)

"The sturdiness of armor and the beauty of a jewel".

(from Boat Attitude)

Basic Information

Category: Motor Yacht

Model Year: 2000

Year Built: 2000

Refit Year: 2015

Refit Type: All Mechanical

Country: Italy

Vessel Top: Open W/Bimini Top

Dimensions

LOA: 85' 0" (25.91m)

LWL: 0' 0" (0.00m)

LOD: 0' 0" (0.00m)

Beam: 19' 4" (5.89m)

Min Draft: 4' 5" (1.35m)

Max Draft: 0' 0" (0.00m)

Clearance: 0' 0" (0.00m)

MFG Length: 0' 0" (0.00m)

Speed, Capacities and Weight

Cruise Speed: 35 Kts. (40 MPH)

Max Speed: 50 Kts. (58 MPH)

Displacement: 100000 Pounds

Water Capacity: 475.5096936 Gallons

Holding Tank: 52.8344104 Gallons

Fuel Capacity: 1585.032312 Gallons

Accommodations

Total Cabins: 3

Total Berths: 4

Sleeps: 6

Total Heads: 3

Crew Cabin: 1

Crew Berths: 2

Crew Sleeps: 2

Crew Heads: 1

Hull and Deck Information

Hull Material: Composite

Deck Material: Composite

Hull Color: White/white

Hull Finish: Stainless Steel

Hull Designer: Magnum Marine

Engine Information

Engines: 2

Manufacturer: MTU

Model: 2X16V2000 DDC/MTU 1849 HP

Engine Type: Inboard

Fuel Type: Diesel

DETAILED INFORMATION

SOME MAGNUM OWNERS

- Carlo Riva (IT) Riva Boats Builder - Magnum 35 Sport - 1967
- Count Urbano Rattazzi (IT) Entrepreneur - Magnum 53 - 1977
- H.E. Sheikh Mishal Al Ahmad al Sabah (KW) Kuwait Deputy Chief - Magnum 53 F.B. - 1977
- Silvio Berlusconi (IT) Italian Prime Minister - Magnum 70 - 1990
- H.M. King Juan Carlos of Spain (Esp) - Magnum 50 Bestia - 1994
- Victor Borge (DK/USA) -Entertainer-Musician - Magnum 50 Bestia 1995
- Lord Nat Rothschild (UK) - Entrepreneur - Magnum 27 and Magnum 50 Bestia - 1996
- Johnny Hallyday (FR) Musician-Actor - Magnum 70 1999
- Lenny Kravitz (USA) - Musician - Magnum 60 Furia - 2001

" There's not much difference between a Magnum and a Rolls Royce. Both vehicles set standards that other builders find impossible to meet" (**Mike Smith, Boating Magazine**)

"From our experience, the Magnum is structurally, mechanically, and electrically superior to any boat in its class."

(McDonnell Douglas, Fighter Aircraft Manufacturer)

"The sturdiness of armor and the beauty of a jewel".

(from Boat Attitude)

Broker Teaser (**M.L**)

I sold this Magnum in 1999 to present Owner ; i've been the construction manager ; i attended the

final sea trials and acceptance. All original docs available upon request. BOAT DELIVERED EX
FACTORY MARCH 2001

Exclusions

Owner's personal belongings.

Disclaimer

The Company offers the details of this vessel or yacht in good faith but cannot guarantee or warrant the accuracy of this information nor warrant the condition of the vessel. A buyer should instruct his representatives, agents, or his surveyors, to investigate such details as the buyer desires validated. This vessel or yacht is offered subject to prior sale, price change, or withdrawal without notice.

PHOTOS

Magnum-801



magnum801-4



0012

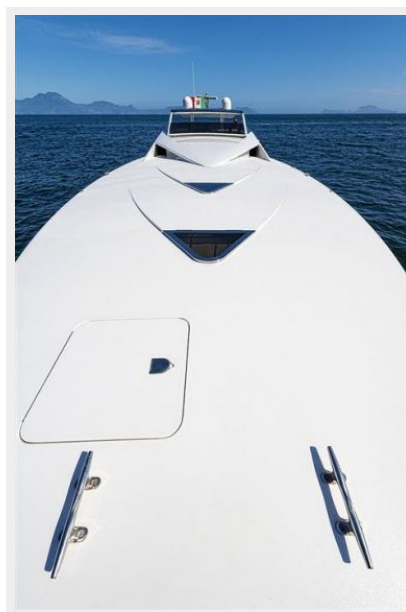


0005



_MOT0558

Magnum 80-5



_MOT0547



_MOT0550



_MOT0538



_MOT0542



_MOT0582



_MOT0584



IMG_1705



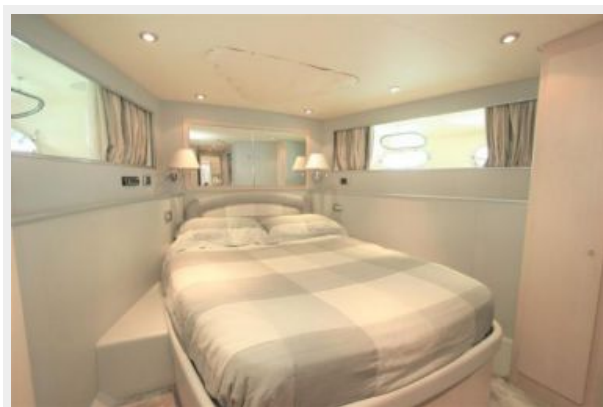
IMG_1703



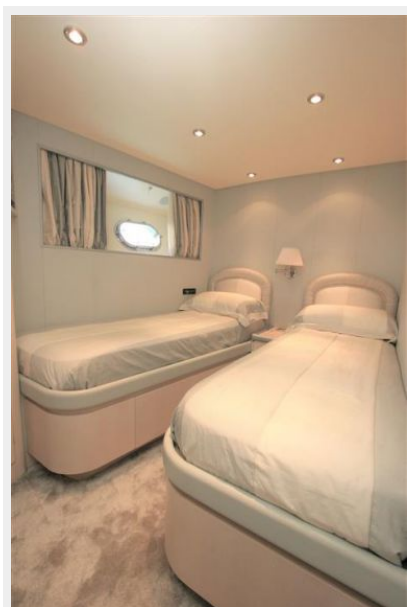
IMG_1702



IMG_1694



IMG_1701



_MOT0587



magnum-80-lay out



CONTACTS

Andrey Shestakov, leading yacht broker of the sales department of Shestakov Yacht Sales Inc. Shestakov Yacht Sales Inc., the official representative of the Miami/Fort Lauderdale FL headquarters.

Contact details

Email: andrey@shestakovyachtsales.com

Web: shestakovyachtsales.com/en/

Telephones

USA: +1(954)274-4435

Office hours

Monday – Saturday: **9:00 - 21:00** EDT

Sunday: **closed**

Address



Harbour Towne Marina, 850 NE 3rd St,
STE 213, Dania, FL 33004