

EASY RIDERS



Year Built: 2003

Model: Catamaran

Price: PRICE ON APPLICATION

LOA: 34' (10.36m)

Beam: 16.83

Cruise Speed: 13 Knots Kts. (15 MPH)

Max Speed: 16 Knots Kts. (18 MPH)

Our experienced yacht broker, Andrey Shestakov, will help you choose and buy a yacht that best suits your needs **Easy riders** — n/a from our catalogue. Presently, at Shestakov Yacht Sales Inc., we have a wide variety of yachts available on our sale's list. We also work in close contact with all the big yacht manufacturers from all over the world.

If you would like to buy a yacht **Easy riders** — n/a or would like help answering any questions concerning purchasing, selling or chartering a yacht, please call **+1(954)274-4435**

TABLE OF CONTENTS

TABLE OF CONTENTS	2
SPECIFICATIONS	3
Overview	3
Basic Information	3
Dimensions	3
Speed, Capacities and Weight	4
Accommodations	4
Hull and Deck Information	4
Engine Information	4
PHOTOS	5
CONTACTS	10
Contact details	10
Telephones	10
Office hours	10
Address	10

SPECIFICATIONS

Overview

EASY RIDERS is a unique offering on the market. She offers all the performance and comfort that the PDQ's are known for, and was kept up-to-date by a knowledgeable cruising owner. If you are looking for a quality, priced right PDQ 34, you definitely should take a look at EASY RIDERS. Some of the upgrades include a new windscreen on the Flybridge, a watermaker, two solar panels, aft and bow biminis, new exterior upholstery, new house bank 28" TV with a tracking dish antenna, a Shark WiFi signal amplifier, and starting batteries, AB dinghy, mast stabilizers, and much more. The MV/34 is cruising cat designed for the liveaboard long distance cruiser.

What you will find, and really appreciate are (2) cabins large enough to hold queen size beds, loads of storage space, lots of interior light and extensive heating, A/C, and ventilation throughout. The salon/dinette area seats (6) or more comfortably and the starboard side lower helm has a forward facing double helm chair provides excellent seating for the co-Captain ; with L shaped built-in seating to port.

The flybridge is accessed by teak steps, not a ladder, and is big enough to accommodate the whole visiting party. The deck area has grab rails everywhere and the walkways are wide enough for two people to pass one another easily. Docking is a breeze with a sharp turning radius due to the wide drive line spacing. Fuel economy is remarkable with twin 75 hp diesels She will cruise at 13 knots all day and burn less than 4.5 gph. At 7 knots the burn rate is less than 1.5 gph !!

Basic Information

Category: Catamaran

Sub Category: Cruiser

Model Year: 2003

Year Built: 2003

Dimensions

LOA: 34' (10.36mm)

Beam: 16.83

Speed, Capacities and Weight

Cruise Speed: 13 Knots Kts. (15 MPH)

Max Speed: 16 Knots Kts. (18 MPH)

Water Capacity: 80 Gallons

Holding Tank: 45 Gal Gallons

Fuel Capacity: 184 Gal Gallons

Accommodations

Total Cabins: 2

Total Heads: 1

Hull and Deck Information

Hull Material: Fiberglass

Engine Information

Engines: 2

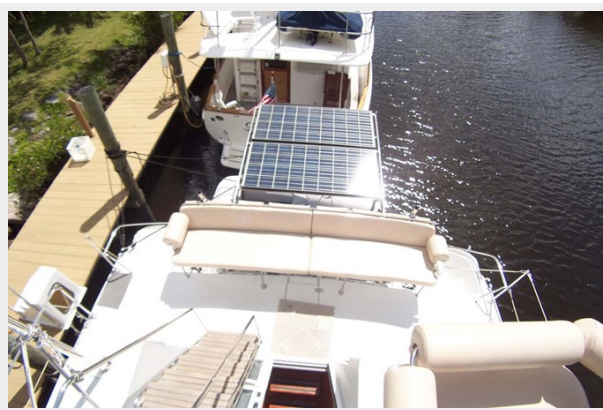
Manufacturer: Yanmar

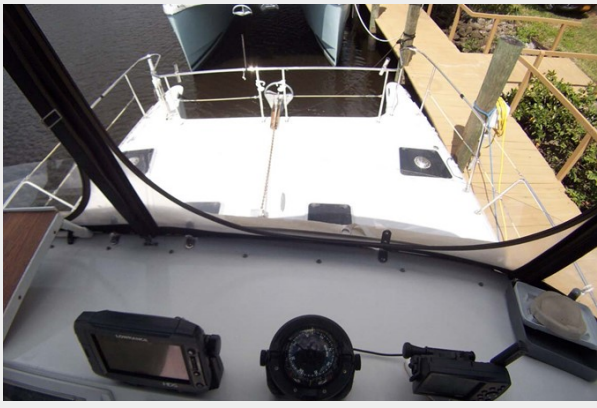
Engine Type: Inboard

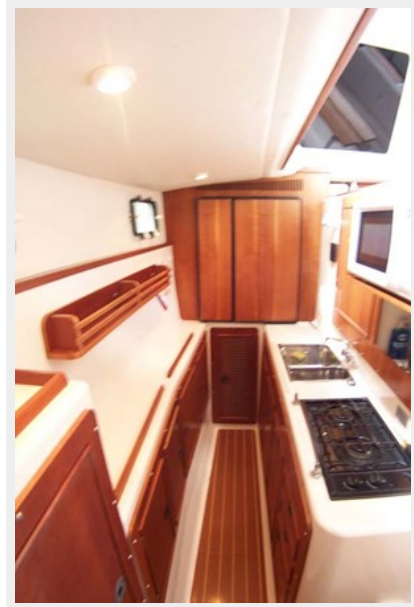
Fuel Type: Diesel

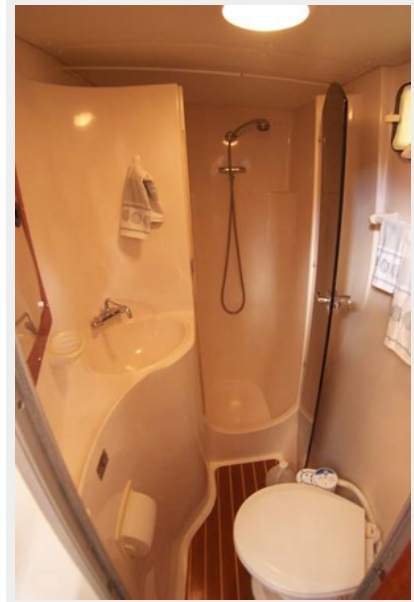
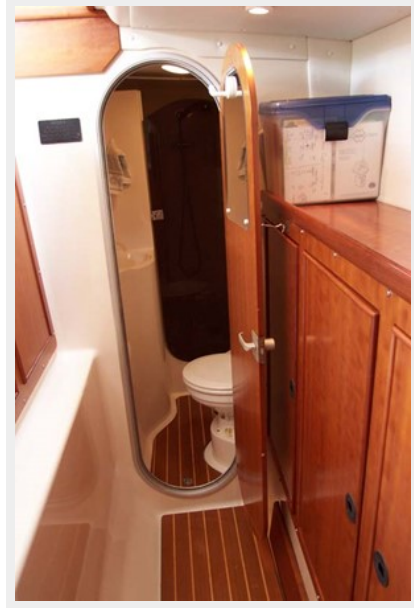
PHOTOS











CONTACTS

Andrey Shestakov, leading yacht broker of the sales department of Shestakov Yacht Sales Inc. Shestakov Yacht Sales Inc., the official representative of the Miami/Fort Lauderdale FL headquarters.

Contact details

Email: andrey@shestakovyachtsales.com

Web: shestakovyachtsales.com/en/

Telephones

USA: +1(954)274-4435

Office hours

Monday – Saturday: **9:00 - 21:00** EDT

Sunday: **closed**

Address



Harbour Towne Marina, 850 NE 3rd St,
STE 213, Dania, FL 33004