

CONTENDER 24 SPORT



Year Built: 2017

LOA: 24' 6" (7.47mm)

Model: Boats

Min Draft: 1' 11" (0.58mm)

Price: PRICE ON APPLICATION

Our experienced yacht broker, Andrey Shestakov, will help you choose and buy a yacht that best suits your needs **Contender 24 Sport** — n/a from our catalogue. Presently, at Shestakov Yacht Sales Inc., we have a wide variety of yachts available on our sale's list. We also work in close contact with all the big yacht manufacturers from all over the world.

If you would like to buy a yacht **Contender 24 Sport** — n/a or would like help answering any questions concerning purchasing, selling or chartering a yacht, please call **+1(954)274-4435**

TABLE OF CONTENTS

TABLE OF CONTENTS	2
SPECIFICATIONS	3
Overview	3
Basic Information	4
Dimensions	4
Speed, Capacities and Weight	4
Hull and Deck Information	4
Engine Information	4
PHOTOS	5
CONTACTS	12
Contact details	12
Telephones	12
Office hours	12
Address	12

SPECIFICATIONS

Overview

Perfect Family fishing and island hopping boat for summer! Owner is looking to move to a larger center console. Call today to schedule a time to see this 24 Contender Sport! Located in Dunedin FL at Marker One Marina.

AmeraTrail trailer included

Annual service on Merc 350 and Full Detail April 22nd

Extended Mercury Warranty 06/06/22

UPGRADED OPTIONS

- 50 hours on the Mercury 350 Verado
- AmeraTrail trailer included
- Inside High and Dry Stored Since Day 1
- Full Detail
- Annual Service Completed
- Upgraded Hard Top!!
- Upgraded Upholstery
- Huge 16in Garmin
- Upgraded Fusion Stereo

Standard features:

- Anchor locker storage
- Forward bench seating
- Removable forward seat insert (to convert seating to "U")
- Two (2) 59 gallon storage compartments
- Forward Seats
- 94 gallon forward fish box
- Console seat with insulated storage
- Custom sport console with built-in helm pod
- Step-down console
- Two (2) – 30 gallon aft fish boxes
- Oversized in-deck bilge access
- 26 gallon above deck live well
- Aft seating with additional bilge access
- Make an offer today!

Basic Information

Category: Boats

Sub Category: Center Console

Model Year: 2017

Year Built: 2017

Dimensions

LOA: 24' 6" (7.47mm)

Min Draft: 1' 11" (0.58mm)

Speed, Capacities and Weight

Fuel Capacity: 130 Gal Gallons

Hull and Deck Information

Hull Material: Fiberglass

Engine Information

Engines: 1

Manufacturer: Mercury

Engine Type: Outboard

Fuel Type: Gas

PHOTOS

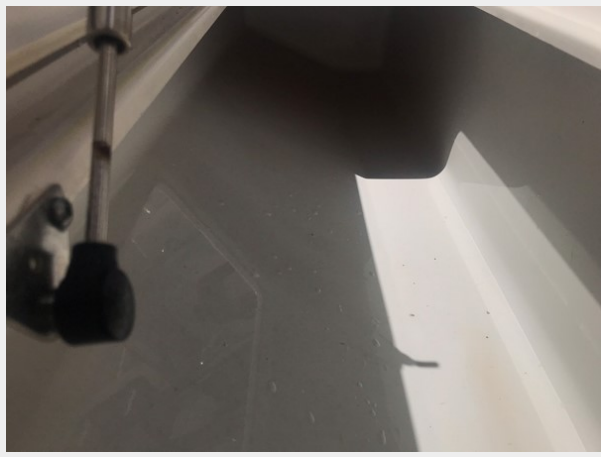


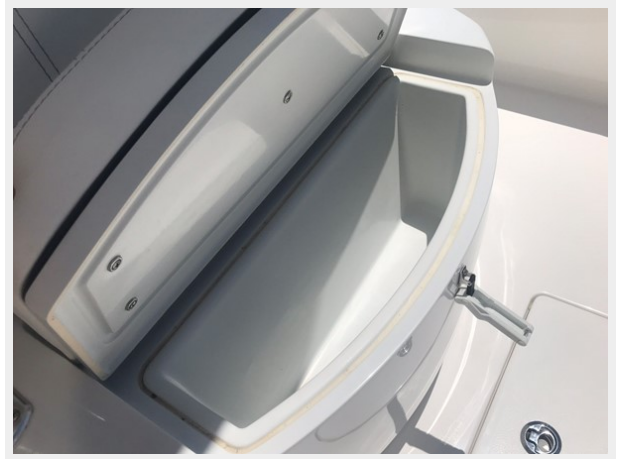












CONTACTS

Andrey Shestakov, leading yacht broker of the sales department of Shestakov Yacht Sales Inc. Shestakov Yacht Sales Inc., the official representative of the Miami/Fort Lauderdale FL headquarters.

Contact details

Email: andrey@shestakovyachtsales.com

Web: shestakovyachtsales.com/en/

Telephones

USA: +1(954)274-4435

Office hours

Monday – Saturday: **9:00 - 21:00** EDT

Sunday: **closed**

Address



Harbour Towne Marina, 850 NE 3rd St,
STE 213, Dania, FL 33004