

BIG CHIEF — VIKING



Builder: [VIKING](#)

Year Built: 1985

Model: Sport Yacht

Price: PRICE ON APPLICATION

Location: United States

LOA: 41' 2" (12.55m)

Beam: 14' 10" (4.52m)

Max Draft: 4' 3" (1.30m)

Our experienced yacht broker, Andrey Shestakov, will help you choose and buy a yacht that best suits your needs **BIG CHIEF — VIKING** from our catalogue. Presently, at Shestakov Yacht Sales Inc., we have a wide variety of yachts available on our sale's list. We also work in close contact with all the big yacht manufacturers from all over the world.

If you would like to buy a yacht **BIG CHIEF — VIKING** or would like help answering any questions concerning purchasing, selling or chartering a yacht, please call **+1(954)274-4435**

TABLE OF CONTENTS

TABLE OF CONTENTS	2
SPECIFICATIONS	6
Overview	6
Basic Information	6
Dimensions	6
Speed, Capacities and Weight	7
Accommodations	7
Hull and Deck Information	7
Engine Information	7
DETAILED INFORMATION	8
Overview	8
Exclusions	10
Disclaimer	10
PHOTOS	11
2	11
3	11
4	11
5	11
6	11
7	11
8	11
9	11
10	12
11	12
12	12
13	12
14	12
15	12

17	13
16	13
18	13
19	13
21	13
20	13
23	14
22	14
24	14
25	14
26	14
27	14
29	15
28	15
30	15
31	15
33	15
32	15
34	16
35	16
36	16
37	16
39	16
38	16
40	17
41	17
42	17
43	17
44	17

45	17
46	17
47	17
48	18
49	18
50	18
51	18
52	18
53	18
54	18
55	18
56	19
57	19
58	19
59	19
60	19
61	19
62	19
63	19
64	20
65	20
66	20
67	20
68	20
69	20
70	21
71	21
72	21
73	21

74	21
75	21
76	21
77	21
78	22
79	22
80	22
81	22
CONTACTS	23
Contact details	23
Telephones	23
Office hours	23
Address	23

SPECIFICATIONS

Overview

This Viking 41 Convertible is a rare find and a must see boat; it is one of the cleanest, best keep boat we have seen. Originally delivered to and used in Lake Erie and always stored indoors in the off season until 2015. Whether at dockside, cruising Long Island Sound or heading to Block Island the 41 Viking commands the respect of discerning yachtsmen. The moment you step aboard at dockside, her huge cockpit quickly identifies the 41 as a premier fishing machine. Fishing equipment such as recessed fish boxes, molded tackle cabinet with sink, cockpit ice chest and seawater wash down and plenty of room to add your personal touches. But those who are looking for some luxury, don't despair. The interior of this yacht makes you feel like you just checked into an elegant hotel suite. She has had extensive upgrades and has been extremely well maintained by her current knowledgeable owner. She is the single stateroom version with large offset berth in the forward owner's stateroom, a generous head with separate stall shower, stacked washer and dryer, large U-shaped dinette, fully equipped L-shaped Galley and a well laid out main salon. She is truly a boat that must be seen to be appreciated. Come take a look you will not be disappointed. Topsides just compounded and waxed and the bottom painted; she is ready to go, just add water !!!

Basic Information

Category: Sport Yacht

Sub Category: Convertible

Model Year: 1985

Year Built: 1985

Country: United States

Dimensions

LOA: 41' 2" (12.55m)

Beam: 14' 10" (4.52m)

Max Draft: 4' 3" (1.30m)

MFG Length: 41' 0" (12.50m)

Speed, Capacities and Weight

Displacement: 32000 Pounds

Water Capacity: 125 Gallons

Holding Tank: 20 Gallons

Fuel Capacity: 430 Gallons

Accommodations

Total Cabins: 2

Total Heads: 1

Hull and Deck Information

Hull Material: Fiberglass

Engine Information

Engines: 2

Manufacturer: Crusader

Model: 454

Engine Type: Inboard

Fuel Type: Gas

DETAILED INFORMATION

Overview

DESCRIPTION When you enter thru to cockpit companionway door you will find luxurious accommodations featuring custom furniture and drapes, teak trim and rich carpeting quickly lead to a feeling of warmth and richness. The built-in entertainment center with wet bar and ice maker further accents the spacious salon. Moving forward, two steps take you down to the fully equipped L-shaped galley to starboard. Everything from a simple sandwich to a gourmet meal can be prepared quickly and easily. Directly across to port is a large U-shaped dinette. Moving forward to port you will find the ship's head with vanity, sink, marine head and a separate stall shower. Opposite to starboard is a locker with the clothes washer and dryer. Continuing forward you will enter the owner's stateroom with a large double off-set berth with spacious storage drawers and lockers.

- Avanti Stand-up Refrigerator/Freezer - New 2019
- Magic Chef Microwave - New 2019
- New flooring in Galley and Head - 2018
- New Salon Carpeting - 2018
- New Dinette Cushions - 2018

RECENT UPGRADES

2014:

- New Upgraded 1 3/4" shafts w/4 blades props and drip-less shaft logs
- Bottom stripped and barrier coated
- New Garmin Touch Screens, New HD dual range radar, engine room cameras

2015

- New Bomar Hatches
- New Generator heat exchanger
- Oil change system
- Automatic fire suppression system
- Sea strainers with winterizing valves
- Bilge deodorizer
- High water bilge alarms
- Sony smart radio with remote in cockpit

2016:

- Updated electronic distributors

- Upgraded larger Sea Kemp heat exchangers
- All New engine and generator hoses
- New exhaust manifolds
- New Risers and Elbows
- New Lewmar Pro Fish 1000 windlass w/bridge controls and bow foot controls
- New 8 Plait rope and chain
- Both transmissions and reduction gears rebuilt
- New Custom Blinds in Salon
- New Salon LED Lights in Salon

2017:

-
- All New Sanitation Hoses
- New Kitchen Faucet
- Two Group 29 DC Batteries (Hse+Eng)

2018:

- New Atlantic Tower Custom Hardtop
- New EZ4C Full Enclosure
- New Bridge Console Cover
- New Glendening Synchronizer
- New Electronic Compass
- Remote Controlled Winch on Hardtop to lift dinghy
- New front deck non-skid, pulpit resealed and painted
- New Generator Water Pumps
- New Engine Room Camera
- New VHF and Antennas w/remote in Salon
- New LED cockpit, spreader and under water lights
- Group 24 DC Battery for Generator

2019:

- Exterior Teak Refinished
- New forward AC compressor, both systems charged and serviced
- New Synthetic Teak Step Pads on Bridge Ladder
- New Avanti Refrigerator
- New Magic Chef Microwave
- 2020:

Bottom and Running Gear painted and ready for 2020 season
BROKER COMMENTS

Regardless of her age, this is one of the cleanest boats we've seen. A rare find and worth a look and your serious consideration. Thank you for your time and consideration.

Exclusions

Owner's personal belongings.

Disclaimer

The Company offers the details of this vessel or yacht in good faith but cannot guarantee or warrant the accuracy of this information nor warrant the condition of the vessel. A buyer should instruct his representatives, agents, or his surveyors, to investigate such details as the buyer desires validated. This vessel or yacht is offered subject to prior sale, price change, or withdrawal without notice.

PHOTOS

2



3



4



5



6



7



8



9



10



11



12



13



14



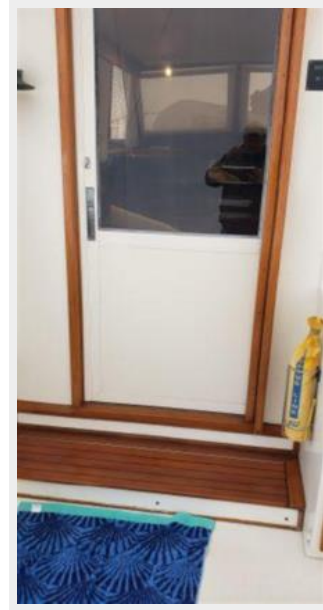
15



16



17



18



19



20



21



22



23



24



25



26



27



28



29



30



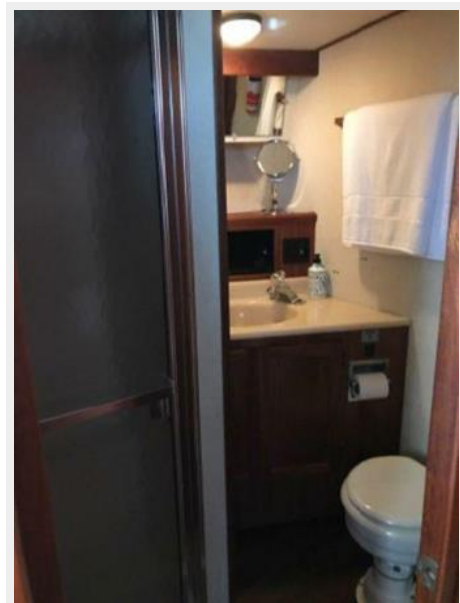
31



32



33



34



35



36



37



39



38



40



41



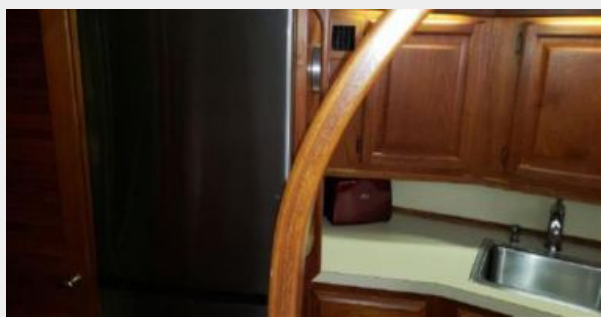
42



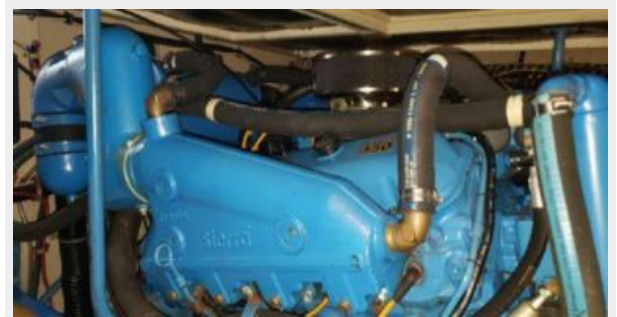
43



44



45



46



47



48



49



50



51



52



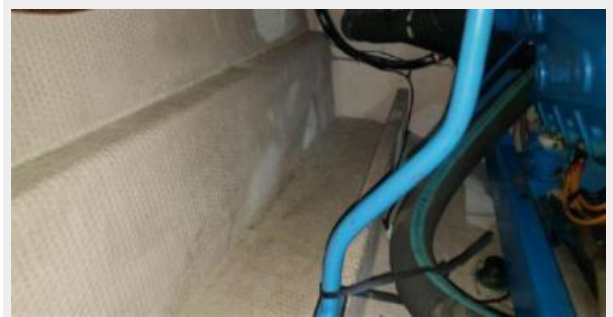
53



54



55



56



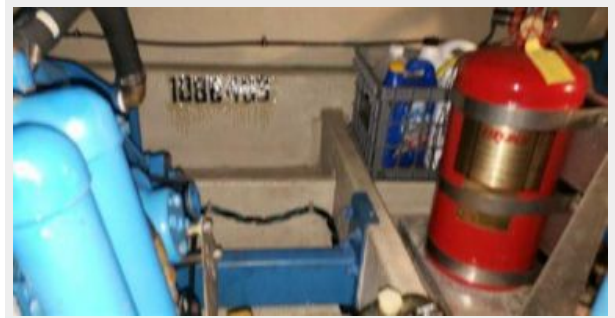
57



58



59



60



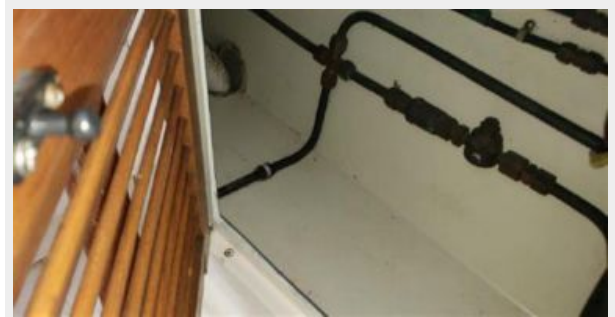
61



62



63



64



65



66



67



68



69



70



71



72



73



74



75



76



77



78



79



80



81



CONTACTS

Andrey Shestakov, leading yacht broker of the sales department of Shestakov Yacht Sales Inc. Shestakov Yacht Sales Inc., the official representative of the Miami/Fort Lauderdale FL headquarters.

Contact details

Email: andrey@shestakovyachtsales.com

Web: shestakovyachtsales.com/en/

Telephones

USA: +1(954)274-4435

Office hours

Monday – Saturday: **9:00 - 21:00** EDT

Sunday: **closed**

Address



Harbour Towne Marina, 850 NE 3rd St,
STE 213, Dania, FL 33004