

50 — BERTRAM



Судостроитель: [BERTRAM](#)

Год постройки: 2020

Модель: Катер для спортивной рыбалки

Цена: ЦЕНА ЯХТЫ ПО ЗАПРОСУ

Местонахождение: United States

Длина общая: 51' 6" (15.70m)

Ширина: 17' 5" (5.31m)

Макс. осадка: 4' 2" (1.27m)

Купить 50 — BERTRAM а также выбрать подходящую вам яхту из нашего каталога яхт вам поможет опытный яхтенный брокер Андрей Шестаков. На сегодняшний день компания Shestakov Yacht Sales Inc. имеет большое количество яхт в собственном списке продаж, а также тесно сотрудничает со всеми крупными яхтенными производителями по всему миру.

Для того чтобы купить яхту 50 — BERTRAM а также проконсультироваться по любому вопросу связанному с покупкой, продажей, чартером яхт позвоните по телефону **+7(918)465-66-44**.

ОГЛАВЛЕНИЕ

ОГЛАВЛЕНИЕ	2
ХАРАКТЕРИСТИКИ	4
Обзор	4
Основная информация	4
Размеры	4
Скорость, вместимость и масса	4
Размещение	5
Корпус и палуба	5
Информация о двигателе	5
ПОДРОБНОЕ ОПИСАНИЕ	6
Factory Installed Options	6
Hull and Deck	6
Mechanical Systems	7
Electrical Systems	7
Deck and Cockpit	8
Helm Station and Flybridge	8
Salon and Galley	9
Staterooms	9
Heads	9
Disclaimer	10
Исключения	10
Отказ от ответственности	10
ФОТОГРАФИИ	11
2	11
3	11
4	11
5	11
7	11

6	11
8	12
9	12
11	12
10	12
12	12
13	12
14	13
КОНТАКТЫ	14
Контактная информация	14
Телефоны	14
Время работы	14
Адрес	14

ХАРАКТЕРИСТИКИ

Обзор

Bertram 50 #1

The 50 Bertram is built right here in Florida, in Tampa, she just made her World Debut at the Miami Boat Show. She was designed and built with the angler and family-focused owner in mind. Her 178-square-foot cockpit features mezzanine seating and is outfitted with everything you'd need to win a tournament.

Offering a lower helm, a 2 stateroom and 2 head layout, the Bertram 50' is ideal for boaters of all kind, and all regions. She offers an optional open or convertible design. The 50 pushes to be a little bolder, drive a little further, and stand up to anything the seas can dream up.

Hull Number 1 is equipped with many creature comforts and additional equipment, including a SEAKEEPER 9 stabilizer, which actually comes standard on all 50 Bertrams.

She's powered by twin MAN 1550's giving her a 37-knot cruise and top speed of 42 knots. She's also equipped with a 21.5kW Onan Generator and a Watermaker.

Основная информация

Тип судна: Катер для спортивной рыбалки

Модельный год: 2020

Год постройки: 2020

Страна: United States

Размеры

Длина общая: 51' 6" (15.70m)

Ширина: 17' 5" (5.31m)

Макс. осадка: 4' 2" (1.27m)

Скорость, вместимость и масса

Водоизмещение: 62000 Pounds

Вместимость воды: 120 Gallons

Объем топливного бака: 1236 Gallons

Размещение

Всего кают: 2

Корпус и палуба

Материал корпуса: Fiberglass

Информация о двигателе

Двигатели: 2

Производитель: Caterpillar

Тип двигателя: Inboard

Тип топлива: Diesel

ПОДРОБНОЕ ОПИСАНИЕ

Factory Installed Options

- B50 Open with CAT C18 @1100 HP & Seakeeper 9 and DC thruster
- Standard two Stateroom, two head
- Upgrade to MAN 1550HP
- Factory Sedan Hardtop w two 18" hatches: Delete 18" hatches and upgrade to panoramic Electric sunroof; with masthead for radar, steaming light and TV dome; with fixed aft bulkhead, windows, and manual sliding Aluminum door
- Mezzanine Tackle Center in lieu of Standard Stbd Mezz Seating: Includes drawers, sink, gaff storage
- Hull Side windows P &S
- Prow Anchor w/ Windlass 300/100
- Matte finish custom cabinetry
- Atlantic: Crème upholstery, light countertops, hardwood flooring throughout
- AC at helm
- Washer dryer above dinette
- Wine cooler under galley sink
- Freezer compartment to stbd helm area seating
- Remote Engine Control for Mezzanine
- AC to Helm Area
- Install and wire electronics package: (Garmin) ...Install and wire electronics package: (Garmin)
- Underwater light, 24V LED (Price per Light----Describe Locations)
- FLIR Fixed Mount Thermal Night Vision Camera
- ACR Spotlight
- Garmin GC100 Camera
- Varnished, high gloss, helm pod
- Teak Cockpit Sole
- Teak mezzanine sole

Hull and Deck

- White gelcoated hull and deck
- Painted navy blue boot stripe
- Hull molded infused vinylester/epoxy blend solid fiberglass bottom with cored hull sides, keel and strakes reinforced with Kevlar
- Yacht-finish, sand-texture, non-skid gelcoat on deck surfaces
- Deck and FRP components: molded vinylester/epoxy blend construction
- Hatches/doors with FRP liners
- Heavy duty white vinyl rub rail with solid stainless insert and end caps

- Keel mounted receptacle for common airmar transducers Antifouling bottom paint
- Commissioning kit

Mechanical Systems

- Twin 1150 mHP CAT C18 Acert, turbo charged main engines with vibration dampening isolators, twin disc gears and controls, engine driven alternators, dual racor filters and custom exhaust Seakeeper9
- 16,000 BTU multi-zone air conditioning with self-contained units Engine room intake and exhaust blowers With demisters
- Heavy-duty sound absorbing insulation in engine room
- 20-gallon electric water heater
- Aquamet 22 shafts, 3.5" diameter
- Tides dripless shaft seals
- High performance rudders and struts
- Emergency engine-driven bilge water evacuation system
- LED lighting in engine room
- Three heavy-duty aluminum fuel tanks: 705-gallon main and two 270-gallon auxiliary
- Fixed fire suppression system in engine room with emergency engine shutdown system
- SeaStar Optimus EPS power-assisted, dual ram hydraulic steering Seachest with bronze strainer plates for generator, air conditioning and raw water pumps
- Bronze seacocks on all underwater thru-hull fittings, bonded
- Five bilge pumps, automatic/manual
- Grey water sump with automatic discharge for showers and sinks Zipwake trim system with auto control
- Hull zinc, recess transom mounted
- Running gear coated with Prospeed
- Pressurized freshwater system with regulated dockside fresh water supply
- Roto-molded freshwater tank, 182-gallon, with level indicator
- Roto-molded holding tank, 107-gallon, with level indicator, electrical pump-out and plumbed for dockside pump-out
- Engine oil change system with pump

Electrical Systems

- OctoPlex G2 ship's control system
- Onan 21.5 KW generator with sound shield
- 50-amp Shore power inlet with cabledmaster cord storage system 12/24V DC distribution panel with voltmeter, magnetic circuit breakers 120/240 AC distribution panel with voltmeter, generator control & shore power selector switch
- Two 24V heavy-duty battery chargers
- LED light fixtures on dimmers

- Vimar outlets and switches throughout
- Alarm monitor system with bilge flood signal for five compartments Helm main engine control panel
- Continuous power to bilge pumps, fire and bilge flood monitors AGM heavy-duty batteries. Separate house and starting batteries Bonding system with galvanic isolator
- Navigation lights
- NMEA2K digital network
- Independent dedicated battery backup for all helm electronics

Deck and Cockpit

- Fortress anchor with chain and rode, accessed from foredeck Custom stainless steel bow chock
- Anchor locker with freshwater wash-down
- Aluminum bridge ladder
- Eight cleats (four at bow and stern, four at springs)
- Cockpit under-gunwale storage with doors, port/stbd
- Frameless house and aft bulkhead windows, tinted laminated glass
- 2" diameter fuel fills (port/stbd for main and for auxiliary) Foredeck hatch, 27" with screen and shade
- Port/stbd removable fish boxes with diaphragm pump out
- LED cockpit lighting
- Transom door with separate top gate
- Transom live well with aquarium view and removable lid Four rod holders in gunwale
- 24V electric reel sockets in cockpit under gunwale
- Two waterproof speakers at mezzanine
- Saltwater wash-down
- Freshwater wash-down
- Shower with hot/cold functions
- Mezzanine seating with cushions
- Short bow rail, aluminum

Helm Station and Flybridge

- Two Murray Slim Line helm chairs
- Palm Beach controls with integrated bow thruster control
- CAT Marine 7" color display
- Ritchie compass
- Four waterproof speakers
- Ongaro tournament steering wheel, stainless steel
- USB outlets
- OctoPiex multifunction display

- Fusion stereo
- Port/stbd seating with cushions and adjustable lounge backrests Kahlenberg marine air horn

Salon and Galley

- OctoPlex multifunction display
- Sliding glass salon door
- LED overhead lighting With dimmer switches
- LED indirect lighting
- Large custom U-shaped salon sofa with storage beneath
- Custom solid-teak coffee table
- LED smart TV
- Full height refrigerator with freezer
- Kenyon four-burner SILKEN2 Trim Line induction cooktop Miele microwave/convection oven
- Designer cabinetry with soft close mechanism and Seasmart latches
- Solid quartz countertop and oversized stainless steel sink with faucet and pull-out sprayer
- Custom solid-teak dinette table
- Air conditioning controls
- 120V AC GFCI receptacles with USB outlets
- Solid light flooring

Staterooms

- Port VIP with twin berths and en-suite head Forward master with queen berth and en-suite head Air conditioning controls in each stateroom
- 120V AC GFCI receptacles with USB outlets
- Cedar-lined hanging lockers
- Designer Cabinetry with soft close mechanism and Seasmart latches
- Custom mattresses
- Designer bedding with custom sheets
- LED overhead lighting with dimmer switches
- LED foyer and step lights with dimmer switches companionway
- Linen closet with custom cedar shelving in companionway
- Solid light flooring

Heads

- Two full heads with vanity and standing shower with teak grate floor insert
- 120V AC GFCI receptacles

- LED overhead lighting with dimmer switches
- Designer cabinetry with soft close mechanism and Seasmart latches
- Solid surface countertops with porcelain sinks
- Contemporary hardware throughout
- Marine toilets, freshwater
- Exhaust blowers
- Air conditioning vents

Disclaimer

The Company offers the details of this vessel in good faith but cannot guarantee or warrant the accuracy of this information nor warrant the condition of the vessel. A buyer should instruct his agents, or his surveyors, to investigate such details as the buyer desires validated. Hours listed may vary from actual hours due to recent use. Purchaser is encouraged to verify hours prior to purchase. This vessel is offered subject to prior sale, price change, or withdrawal without notice.

Исключения

При продаже яхты исключаются личные вещи владельца.

Отказ от ответственности

Компания предоставляет описание судна или яхты добросовестно, но не может гарантировать точность этой информации, а также не ручается за техническое состояние. Покупатель должен проинструктировать своих агентов или оценщиков исследовать представленную информацию более подробно, по собственному желанию. Продажа судна или яхты, изменение цены или снятие с продажи будет происходить без предварительного уведомления.

ФОТОГРАФИИ

2



3



4



5



6



7



8



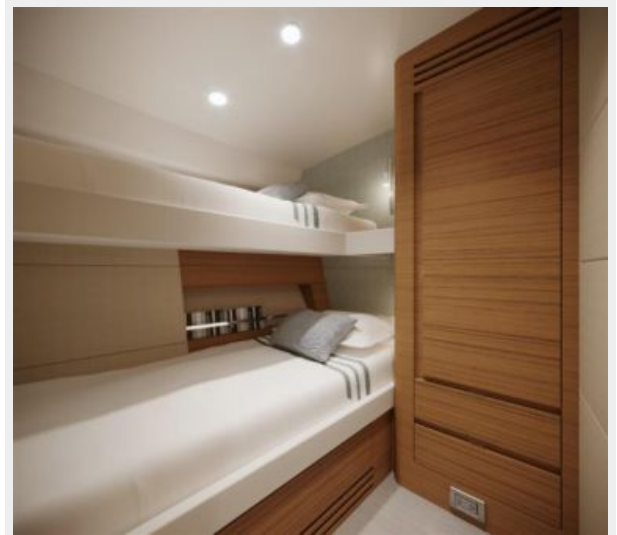
9



10



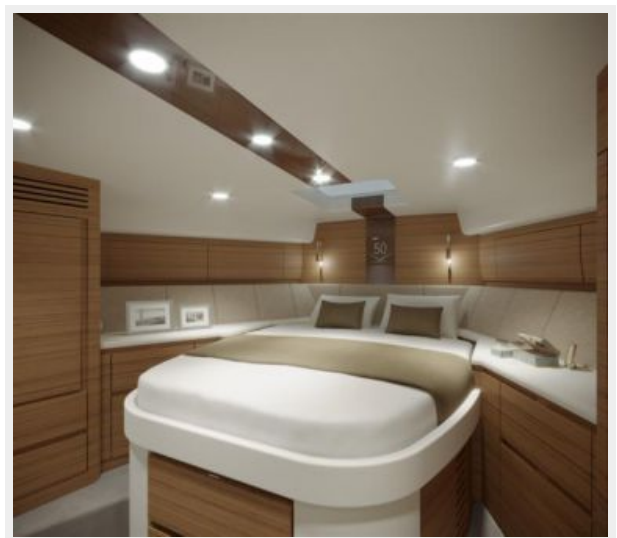
11



12



13



14



КОНТАКТЫ

Андрей Шестаков (Andrey Shestakov) – ведущий яхтенный брокер отдела продаж яхт и судов компании Shestakov Yacht Sales Inc. Официальный представитель Shestakov Yacht Sales Inc. для русскоговорящих клиентов в центральном офисе компании в Майами/Форт Лодердейл/Флорида/США.

Контактная информация

Email: andrey@shestakovyachtsales.com

Web: shestakovyachtsales.com

Телефоны

Краснодарский край: **+7(918)465-66-44**

США, Майами, Флорида: **+1(954)274-4435**

Время работы

Понедельник – Суббота: **9:00 - 21:00**
EDT

Воскресенье: **Закрето**

Адрес



Harbour Towne Marina, 850 NE 3rd St,
STE 213, Dania, FL 33004