

21 2008 CLASSIC BOAT SHOP PISCES DAYS — CLASSIC BOATS INC



Builder: CLASSIC BOATS INC

Year Built: 2008

Model: Daysailer

Price: PRICE ON APPLICATION

Location: United States

LOA: 21' 0" (6.40m)

Beam: 7' 2" (2.18m)

Max Draft: 2' 11" (0.89m)

Our experienced yacht broker, Andrey Shestakov, will help you choose and buy a yacht that best suits your needs 21 2008 Classic Boat Shop Pisces Daysailer — CLASSIC BOATS INC from our catalogue. Presently, at Shestakov Yacht Sales Inc., we have a wide variety of yachts available on our sale's list. We also work in close contact with all the big yacht manufacturers from all over the world.

If you would like to buy a yacht 21 2008 Classic Boat Shop Pisces Daysailer — CLASSIC BOATS INC or would like help answering any questions concerning purchasing, selling or chartering a yacht, please call **+1(954)274-4435**

TABLE OF CONTENTS

TABLE OF CONTENTS	2
SPECIFICATIONS	4
Overview	4
Basic Information	4
Dimensions	4
Speed, Capacities and Weight	4
Hull and Deck Information	5
Engine Information	5
DETAILED INFORMATION	6
Overview	6
Exclusions	6
Disclaimer	6
PHOTOS	8
2	8
3	8
4	8
5	8
6	8
7	8
8	9
9	9
10	9
11	9
12	9
13	9
14	10
15	10
16	10

17	10
19	10
18	10
20	11
21	11
22	11
23	11
24	11
25	11
26	12
27	12
29	12
28	12
30	13
31	13
32	13
33	13
35	13
34	13
36	14
37	14
38	14
CONTACTS	15
Contact details	15
Telephones	15
Office hours	15
Address	15

SPECIFICATIONS

Overview

The PISCES 21 DAYSAILER was inspired by the traditional Herreshoff fish class daysailer, and designed by C W Paine in 1999. These small yachts are finished to the highest standard of the Maine Boat Building tradition, the finest daysailer/weekender you will find anywhere, a great Long Island Sound boat. A carbon fiber mast aids her already pleasing sailing performance and makes stepping and rigging a breeze. Lady features an Advanced 4.15hp Electric Motor and Drive. Very well maintained by her knowledgeable owner she shows well and ready to go. At just under 21 feet overall (20 feet, 9 inches), the Pisces has a waterline length of 16 feet, 4 inches and a beam of 7 feet, 2 inches. Even with an external lead keel weighing 1,600 pounds (just under half of her total displacement), she draws only 2 feet, 11 inches. Under sail, the Pisces 21 has the feel of a bigger boat, thanks to its deep and roomy cockpit and the inherent comfort of riding in a sturdy, steady-going displacement boat. Yet it is simply rigged and easy to control, and it responds nicely to even a light wind.

Basic Information

Category: Daysailer

Model Year: 2008

Year Built: 2008

Country: United States

Fly Bridge: Yes

Dimensions

LOA: 21' 0" (6.40m)

LWL: 16' 4" (4.98m)

Beam: 7' 2" (2.18m)

Max Draft: 2' 11" (0.89m)

MFG Length: 21' 0" (6.40m)

Speed, Capacities and Weight

Displacement: 3250 Pounds

Hull and Deck Information

Hull Material: Fiberglass

Exterior Designer: Chuck Paine

Engine Information

Engines: 1

Manufacturer: Electric

Model: Advanced

Engine Type: Inboard

Fuel Type: Electric

DETAILED INFORMATION

Overview

HULLThe full keel fiberglass hull is infused using vinylester resin. White Gelcoat finish is standard. The rudder is also molded fiberglass with a foam core. The lead ballast keel is externally bolted with 9 X ½" #316 grade Stainless Steel bolts and the rudder pintles and gudgeons are also #316 stainless steel.

DECKHand laid up fiberglass with vinylester resin cored with foam core and finished in Cream colored Awlgrip™ with non-skid additive. The toe rails are teak and cover the hull to deck seam. Custom cast bronze hardware is standard comprising of a 10" hollow 'Herreshoff style' mooring cleat on foredeck, 2 X 7" aft cleats and a pair of custom bow chocks. A bronze winch is provided to the main halyard. A bow to stern teak rub rail adds extra protection to the hull/deck joint as well as adding a nice aesthetic sheer detail.

COCKPITLarge and deep cockpit with 6 ½ foot seats angled in harmony with the coamings for comfort. Seats, coamings and trim are teak (according to market price and availability) or mahogany (varnish is optional). Shelves for stowing loose gear, drinks, lunch or VHF are provided between the seats and the hull. Deep bilge compartment is easily accessible through a lift out hatch for pumping. The inside of the boat has two separate hand laminated molded liners that are bonded to the hull serving as structural bulkhead and stiffeners. All visible surfaces inside the hull are easy to maintain, finished in molded white Gelcoat. The soles are painted with non-skid Awlgrip like the decks. A handsome varnished ash tiller is comfortable and easy to reach. And a teak boom crutch is standard.

RIGGINGA self-tending jib with jib club and traveler is standard. The keel stepped mast is carbon fiber with a single spreader, two topping lifts (Main and jib), and two internal halyards. The mainsail boom has jiffy reefing setup. All halyards, reef(s), and sail control lines are easily controlled from the safety of the cockpit. Mainsheet is 4:1 tackle on a traditional custom bronze traveler with a Cam cleat near the helmsman. Standing rigging is 1 X 19 stainless steel shrouds with bronze turnbuckles. Running rigging is low stretch braided rope.

INTERIORThe cuddy cabin includes two stowage outboard shelves with fiddles, hanging hooks for lines and foul weather gear. There is space for optional portable toilet and a cooler. Positive flotation in watertight compartments with inspection hatches: one forward of the mast and one under the sheet/stern deck can also be used for stowage the third compartment is located under the cockpit sole and is not accessible to stow gear but has an inspection port for pumping and a drain plug.

Exclusions

Owner's personal belongings.

Disclaimer

The Company offers the details of this vessel or yacht in good faith but cannot guarantee or warrant the accuracy of this information nor warrant the condition of the vessel. A buyer should instruct his representatives, agents, or his surveyors, to investigate such details as the buyer desires validated. This vessel or yacht is offered subject to prior sale, price change, or withdrawal without notice.

PHOTOS

2



3



4



5



6



7



8



9



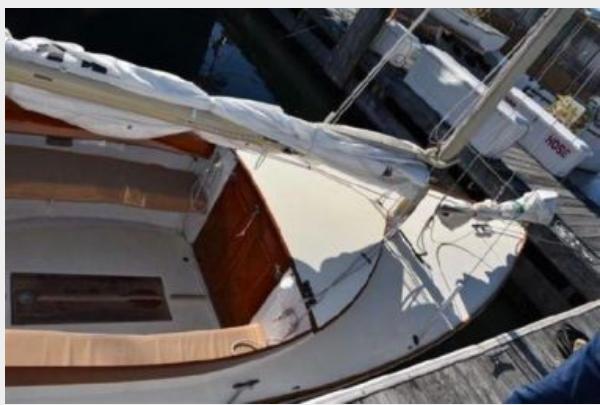
10



11



12



13



14



15



16



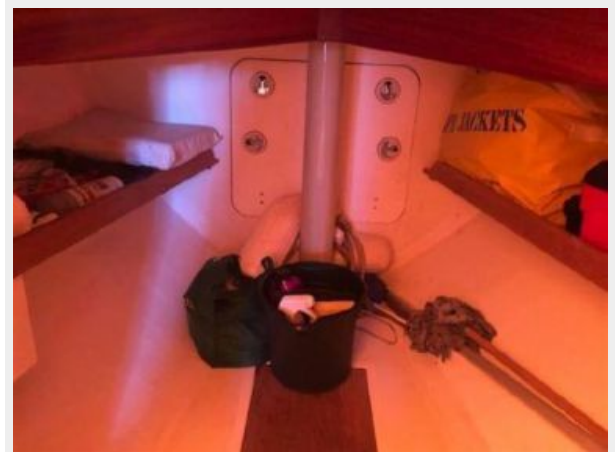
17



18



19



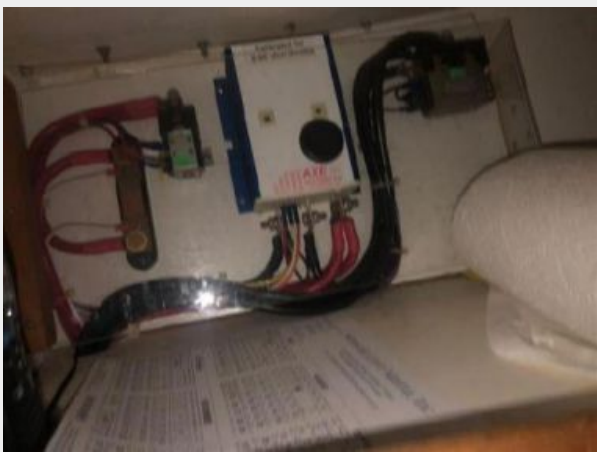
20



21



22



23



24



25



26



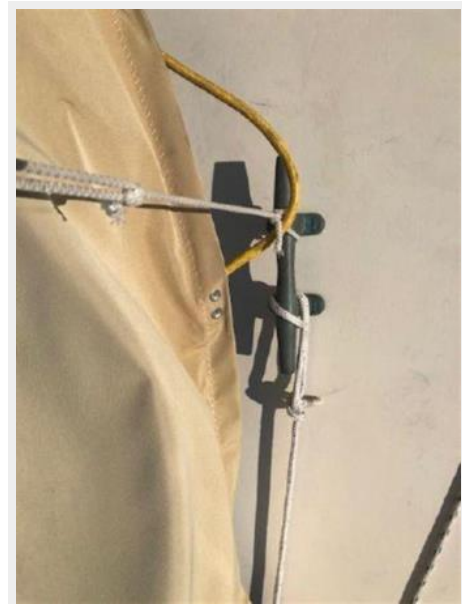
27



28



29



30



31



32



33



34



35



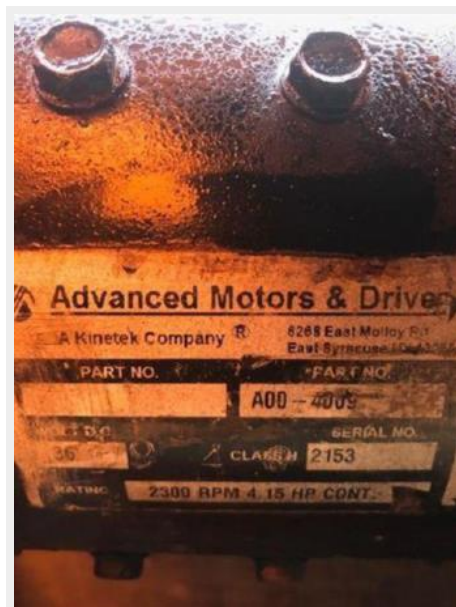
36



37



38



CONTACTS

Andrey Shestakov, leading yacht broker of the sales department of Shestakov Yacht Sales Inc. Shestakov Yacht Sales Inc., the official representative of the Miami/Fort Lauderdale FL headquarters.

Contact details

Email: andrey@shestakovyachtsales.com

Web: shestakovyachtsales.com/en/

Telephones

USA: +1(954)274-4435

Office hours

Monday – Saturday: **9:00 - 21:00** EDT

Sunday: **closed**

Address



Harbour Towne Marina, 850 NE 3rd St,
STE 213, Dania, FL 33004