

34 1994 PACIFIC SEACRAFT CREALOCK 34 — PACIFIC SEACRAFT



Builder: PACIFIC SEACRAFT

Year Built: 1994

Model: Cruising Sailboat

Price: PRICE ON APPLICATION

Location: United States

LOA: 34' 0" (10.36m)

Beam: 10' 0" (3.05m)

Max Draft: 4' 11" (1.50m)

Our experienced yacht broker, Andrey Shestakov, will help you choose and buy a yacht that best suits your needs 34 1994 Pacific Seacraft Crealock 34 — PACIFIC SEACRAFT from our catalogue. Presently, at Shestakov Yacht Sales Inc., we have a wide variety of yachts available on our sale's list. We also work in close contact with all the big yacht manufacturers from all over the world.

If you would like to buy a yacht 34 1994 Pacific Seacraft Crealock 34 — PACIFIC SEACRAFT or would like help answering any questions concerning purchasing, selling or chartering a yacht, please call +1(954)274-4435

TABLE OF CONTENTS

TABLE OF CONTENTS	2
SPECIFICATIONS	7
Overview	7
Basic Information	7
Dimensions	7
Speed, Capacities and Weight	7
Accommodations	8
Hull and Deck Information	8
Engine Information	8
DETAILED INFORMATION	9
Overview	9
Exclusions	11
Disclaimer	11
PHOTOS	12
2	12
3	12
4	12
5	12
6	13
7	13
9	13
8	13
10	14
11	14
12	14
13	14
15	14
14	14

16	15
17	15
18	15
19	15
20	16
21	16
22	16
23	16
24	17
25	17
26	17
27	17
28	18
29	18
30	18
31	18
32	19
33	19
34	19
35	19
36	19
37	19
38	20
39	20
41	20
40	20
42	21
43	21
44	21

45	21
46	21
47	21
48	22
49	22
50	22
51	22
53	23
52	23
55	23
54	23
57	24
56	24
58	24
59	24
61	25
60	25
62	25
63	25
64	26
65	26
66	26
67	26
69	27
68	27
70	27
71	27
72	28
73	28

74	28
75	28
76	28
77	28
78	29
79	29
80	29
81	29
82	29
83	29
84	30
85	30
86	30
87	30
88	30
89	30
90	31
91	31
92	31
93	31
94	31
95	31
97	32
96	32
98	32
99	32
101	33
100	33
103	33

102	33
104	34
105	34
106	34
107	34
109	34
108	34
110	35
111	35
112	35
113	35
115	35
114	35
116	36
117	36
118	36
119	36
120	36
121	36
122	37
CONTACTS	38
Contact details	38
Telephones	38
Office hours	38
Address	38

SPECIFICATIONS

Overview

The Pacific Seacraft 34 designed by Bill Crealock is considered by many to be one of the best bluewater cruising yachts in this size; she offers performance under sail, sea kindliness, ease of handling, comfort and timeless beauty. All the advantages of the Crealock designed canoe stern with its ample overhang, well proven in other Pacific Seacraft are incorporated in the 34. Her moderate displacement contributes to both comfort and speed. She is light enough to make her swift, heavy enough to make her comfortable, and spacious enough to hold ample stores for a long passage. Below-decks, she is light, airy and exceptionally commodious with 6'3" headroom; a spacious, versatile salon, U-shaped gourmet galley; and bunk space for six. Her quality is evident in solid bronze fittings, teak joinery, a hand laid-up hull and molded fiberglass interior.

Basic Information

Category: Cruising Sailboat

Model Year: 1994

Year Built: 1994

Country: United States

Dimensions

LOA: 34' 0" (10.36m)

LWL: 26' 3" (8.00m)

Beam: 10' 0" (3.05m)

Max Draft: 4' 11" (1.50m)

MFG Length: 34' 0" (10.36m)

Speed, Capacities and Weight

Displacement: 12000 Pounds

Water Capacity: 75 Gallons

Holding Tank: 16 Gallons

Fuel Capacity: 32 Gallons

Accommodations

Total Berths: 4

Total Heads: 1

Hull and Deck Information

Hull Material: Fiberglass

Hull Finish: Fiberglass

Engine Information

Engines: 1

Manufacturer: Yanmar

Model: 3JH2E

Engine Type: Inboard

Fuel Type: Diesel

DETAILED INFORMATION

Overview

ACCOMMODATIONS MAIN CABIN: The spacious main salon reflects a traditional layout with modern innovations. Port and starboard settees provide excellent sea berths. The port settee easily converts into a wide double berth. The port settee back is cleverly designed to allow instant access to storage behind, yet remains totally secure underway. Both settee/berths are set up with custom lee-cloths, making them excellent sea-berths. Teak storage lockers and bookshelves with removable fiddles will keep your ship's library safely tucked away. Bronze opening ports with screens; Bomar opening hatches with screens. CruiseAir reverse cycle AC/heat. Brass oil lamp. Brass barometer.

FORWARD CABIN: There is a large v-berth, 6'6" long and 7' wide, that can be converted into a double berth. Plenty of storage is found in lockers underneath the bed and a double hanging locker to starboard. Louvered doors provide good ventilation. Shelves with removable fiddles run along both port and starboard hull. Open ports and an overhead hatch provide plenty of light and ventilation.

HEAD: The head compartment is attractive and easy to clean, with a soft white matte finish trimmed in hand rubbed teak. Ample stowage for personal items is provided above and below the sink counter. Some of the other amenities include a teak framed mirror, hand holds and towel bar. The molded in shower pan is covered by a teak grate.

- Hoses replaced 8/15
- Groco K head rebuilt gasket kit - 8/15

NAV. STATION and QUARTER BERTH: Located on the starboard side of the companionway ladder where it is easily accessible from the cockpit. It features a large 31" by 40" teak chart table with a flip top storage compartment, a master control panel that is hinged for easy access to wiring and a convenient cove for electronics. The forward end of the quarter berth serves as a secure seat for the navigator. Beneath the chart table is a wet locker for hanging foul weather gear. There is a comfortable aft quarter berth that is 7'7" long and 34' wide.

GALLEY:

- Adler-Barbour 12V refrigeration -in 6cu.ft. compartment
- Force 10 propane stove w/oven & broiler
- Double SS sinks w/ hot and cold pressure water
- Foot pump for cold water
- Hallmark Pacific Seacraft dish locker; & cutting board w/trash under Microwave Oven

ELECTRONICS

- Garmin 4210 GPS 10" chartplotter w/Garmin GWS10 Wind Bundles, GM 10 speed and depth ('12)
- Standard Horizon Eclipse-DSC+ VHF ('12)
- Standard Hand Held VHF ('15)

- Icom M-735 SSB transceiver -w/ insulated backstay and Dynaplate ground)
- Autohelm ST4000 autopilot (new drive unit in 2013)
- EPIRB - ACR Global Fix RLB-35 CAT (NEEDS NEW BATTERY)
- Panasonic stereo w/CD
- Autohelm ST4000 w/new drive unit ('13)

ELECTRICAL

- AC-DC master power control panel
- 8 AC circuit breakers
- TwoDeep Cycle House Batteries
- One dedicated Engine Start battery - 9/19
- 30A power cord
- 30 amp to 20 amp adapter
- Xantrex True Charge 20
- 110 Volt shore power system

ENGINE - MECHANICAL

- Yanmar 38 HP 3JH2-E -current engine time 925 hours on Augusts 24, 2019
- cooling pump impeller replaced Sept. 25, 2015 and Aug. 16, 2017
- 5 new hoses on engine installed Sept. 25, 2015
- alternator belt replaced 2014
- oil changed Sept.2018
- new aluminum fuel tank was installed 2006
- new exhaust hose installed March 2011
- new engine cooling water intake hose installed July 2015
- rebuilt alternator 85 amp Sept. 2017
- rebuilt starter motor installed Sept. 2017
- engine stop cable replaced early Oct. 2015
- # Blade Fixed Propeller: 16R11
- Cutless Bearing replaced - 5/16
- Reverse cycle AC 16,000 BTU
- NEW ALUMINUM FUEL TANK INSTALLED 1/20

RIGGING - DECK - SAILS

- MAIN SAIL: Evolution Full Batten with Stach Pack - 2013
- Tides Marine Track Slide System w/ batt cars - 2013
- Ullman 125% Genoa on Harken Rolling Furler
- Staysail - Hanked on inner stay
- Cruising Spinnaker with ATN Sleeve and tack assist - 2013
- DODGER-BIMINI and CONNECTOR: NEW Sunbrella SaeMark fabric installed on existing frames with NEW Strataglass windows including connector panel. All glass panels have covers.

- Companionway hatch has screen and solid panel
- Cockpit cushions
- CUSTOM WINTER COVER by North Shore Canvas. Supported by mast and boom (Does NOT need supporting frame,)
- Standing rigging replaced 9/12
- Mast and Boom Painted 9/12
- Replaced deck/steaming lights and spreader lights with LED - 8/15

Exclusions

Owner's personal belongings.

Disclaimer

The Company offers the details of this vessel or yacht in good faith but cannot guarantee or warrant the accuracy of this information nor warrant the condition of the vessel. A buyer should instruct his representatives, agents, or his surveyors, to investigate such details as the buyer desires validated. This vessel or yacht is offered subject to prior sale, price change, or withdrawal without notice.

PHOTOS

2



3



4



5



6



7



9



8



10



11



12



13



14



15



16



17



18



19



20



21



22



23



24



25



26



27



28



29



30



31



32



33



34



35



36



37



38



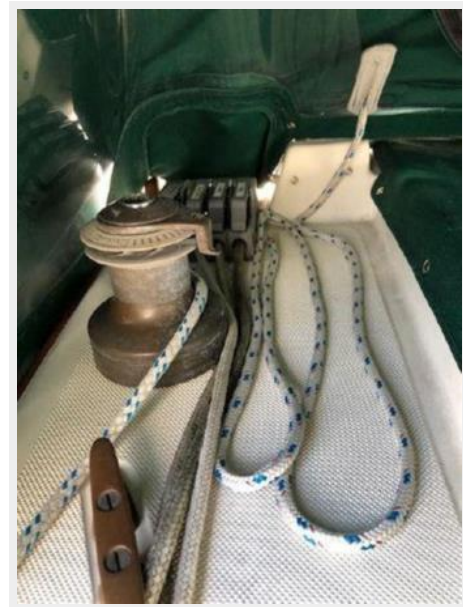
39



40



41



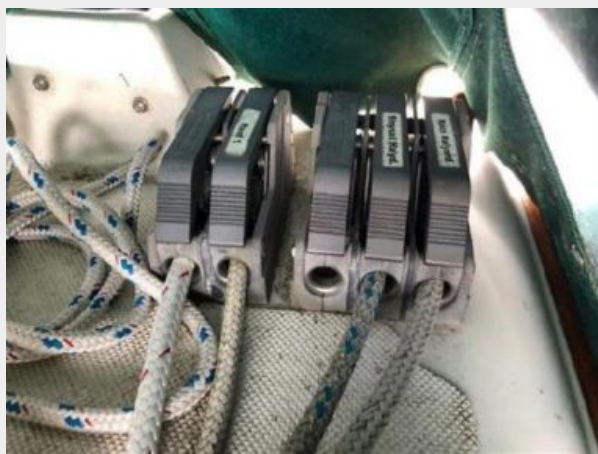
42



43



44



45



46



47



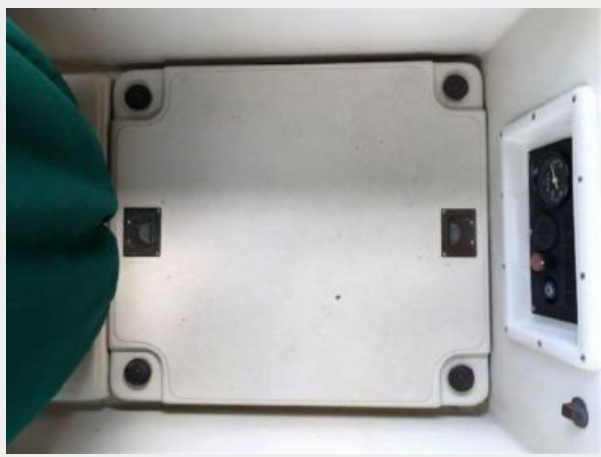
48



49



50



51



52



53



54



55



56



57



58



59



60



61



62



63



64



65



66



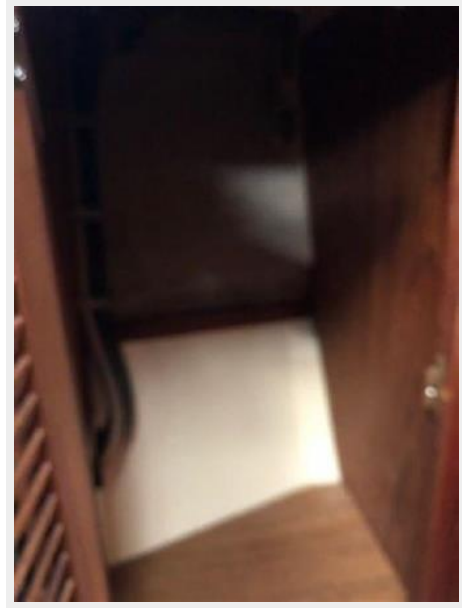
67



68



69



70



71



72



73



74



75



76



77



78



79



80



81



82



83



84



85



86



87



88



89



90



91



92



93



94



95



96



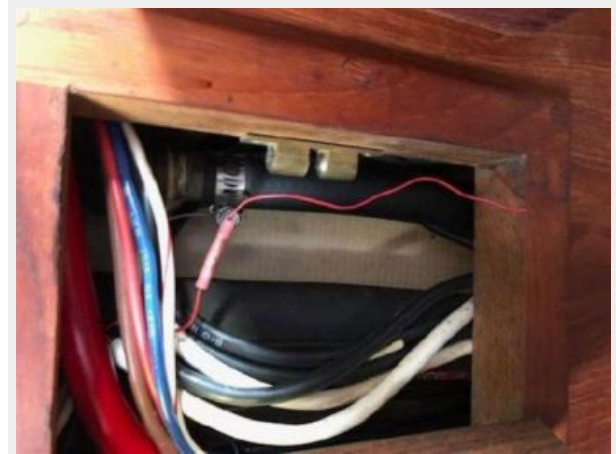
97



98



99



100



101



102



103



104



105



106



107



108



109



110



111



112



113



114



115



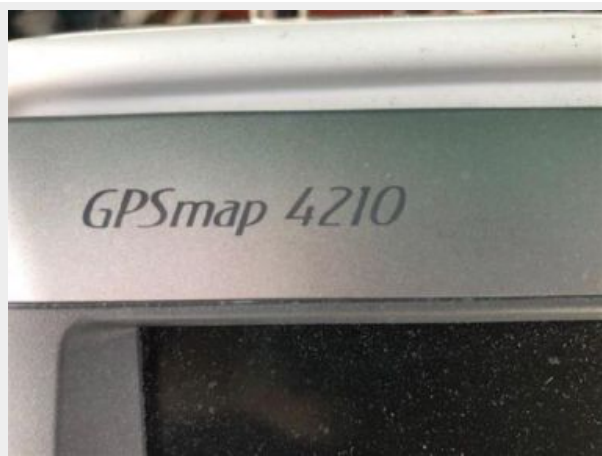
116



117



118



119



120



121



122



CONTACTS

Andrey Shestakov, leading yacht broker of the sales department of Shestakov Yacht Sales Inc. Shestakov Yacht Sales Inc., the official representative of the Miami/Fort Lauderdale FL headquarters.

Contact details

Email: andrey@shestakovyachtsales.com

Web: shestakovyachtsales.com/en/

Telephones

USA: +1(954)274-4435

Office hours

Monday – Saturday: **9:00 - 21:00** EDT

Sunday: **closed**

Address



Harbour Towne Marina, 850 NE 3rd St,
STE 213, Dania, FL 33004