

NELSEA — OFFSHORE YACHTS



Судостроитель: OFFSHORE YACHTS

Год постройки: 1992

Модель: Моторная яхта

Цена: **ЦЕНА ЯХТЫ ПО ЗАПРОСУ**

Местонахождение: United States

Длина общая: 55' 0" (16.76m)

Ширина: 16' 10" (5.13m)

Крейс. скорость: 9.5 Kts. (11 MPH)

Макс. скорость: 14 Kts. (16 MPH)

Купить **NELSEA — OFFSHORE YACHTS** а также выбрать подходящую вам яхту из нашего каталога яхт вам поможет опытный яхтенный брокер Андрей Шестаков. На сегодняшний день компания **Shestakov Yacht Sales Inc.** имеет большое количество яхт в собственном списке продаж, а также тесно сотрудничает со всеми крупными яхтенными производителями по всему миру.

Для того чтобы купить яхту **NELSEA — OFFSHORE YACHTS** а также проконсультироваться по любому вопросу связанному с покупкой, продажей, чартером яхт позвоните по телефону **+7(918)465-66-44**.

ОГЛАВЛЕНИЕ

ОГЛАВЛЕНИЕ	2
ХАРАКТЕРИСТИКИ	6
Обзор	6
Основная информация	6
Размеры	6
Скорость, вместимость и масса	6
Размещение	7
Корпус и палуба	7
Информация о двигателе	7
ПОДРОБНОЕ ОПИСАНИЕ	8
Great Value Features	8
Accommodations	8
Galley and Interior	9
Electrical Equipment	10
Pilothouse	10
Flybridge	11
Deck and Hull	12
Engine and Mechanical	12
Upgrades to NELSEA	13
Remarks	14
Исключения	14
Отказ от ответственности	14
ФОТОГРАФИИ	15
26 JUNE 2016 198	15
DSC02268	15
IMG_4672	15
IMG_4682	15
Nelsea 01L	15

Nelsea 02L	15
Nelsea 03L	16
Nelsea 04L	16
Nelsea 17L	16
Nelsea 16L	16
Nelsea 18L	16
Nelsea 19L	16
Nelsea 22L	17
Nelsea 23L	17
Nelsea 24L	17
Nelsea 25L	17
Nelsea 26L	17
Nelsea 29L	17
Nelsea 30L	18
Nelsea 31L	18
Nelsea 32L	18
Nelsea 33L	18
Nelsea 34L	18
Nelsea 35L	18
Nelsea 36L	19
Nelsea 37L	19
Nelsea 39L	19
Nelsea 40L	19
Nelsea 41L	19
Nelsea 42L	19
Nelsea 43L	20
Nelsea 44L	20
Nelsea 45L	20
Nelsea 46L	20

Nelsea 47L	20
Nelsea 48L	20
Nelsea 49L	21
Nelsea 50L	21
Nelsea 51L	21
Nelsea 52L	21
Nelsea 53L	21
Nelsea 54L	21
Nelsea 56L	22
Nelsea 55L	22
Nelsea 57L	22
Nelsea 58L	22
Nelsea 59L	22
Nelsea 60L	22
Nelsea 62L	23
Nelsea 61L	23
Nelsea 63	23
Nelsea 63L	23
Nelsea 64L	23
Nelsea 65L	23
Nelsea 66L	24
Nelsea 67L	24
Nelsea 68L	24
Nelsea 69L	24
Nelsea 70L	24
КОНТАКТЫ	25
Контактная информация	25
Телефоны	25
Время работы	25

Адрес

25

ХАРАКТЕРИСТИКИ

Обзор

NELSEA is now located at our docks and is seriously for sale. Two boat owner wants offers. If the owner had not succumbed to 2-foot-ites NELSEA would be returning to Alaska for another adventure this summer.

At the pinnacle of pilothouse cruising yachts, NELSEA is a stunning example of a 55' Offshore. Boathouse kept and continuously upgraded, stabilized, bow thruster, and with an extended boat deck, fresh epoxy barrier coat, and updated countertops and soft goods. NELSEA is a pleasing vessel throughout, showing Offshore Yachts well-earned reputation for quality and comfort and long-term value. The spacious three stateroom interior boasts an elegant amidships master suite accessed from the expansive salon and galley, the raised pilothouse with Furuno electronics at the center line helm, inside bridge access to the vast Flybridge and forward stairs to the two guest cabins. Covered walk around decks. Washer dryer, watermaker, and two additional freezers will ensure your cruising is comfortable!

Основная информация

Тип судна: Моторная яхта

Подкатегория: Pilothouse

Модельный год: 1992

Год постройки: 1992

Страна: United States

Размеры

Длина общая: 55' 0" (16.76m)

Ширина: 16' 10" (5.13m)

Скорость, вместимость и масса

Крейс. скорость: 9.5 Kts. (11 MPH)

Макс. скорость: 14 Kts. (16 MPH)

Водоизмещение: 61500 Pounds

Вместимость воды: 400 Gallons

Объем топливного бака: 1000 Gallons

Размещение

Всего кают: 3

Всего ком. состава: 2

Корпус и палуба

Материал корпуса: Fiberglass

Информация о двигателе

Двигатели: 2

Производитель: Detroit Diesel

Модель: 6V92

Тип двигателя: Inboard

Тип топлива: Diesel

ПОДРОБНОЕ ОПИСАНИЕ

Great Value Features

Here is what makes the Offshore 55 NELSEA a Great Value:

- Boathouse kept
- Custom extended hard top over the cockpit
- 1500# Browar and 13' Novurania dinghy
- Stainless Staple railings on the swim step
- Updated countertops throughout the yacht
- Updated table tops with adjustable height stools & table
- All Appliances recently replaced Including:
 - Washer unit (plus there is an additional washer/dryer combo unit)
 - Sanitation pressure tanks & hoses
 - Torrid hot water heater
 - Phantom roller doors and Hunter Douglas window shades
 - Two teak faced Sub-Zero fridges with separate Sub-Zero freezer
- Fully renewed soft goods, carpets, and refinished teak floors
- Hydraulic Stabilizers
- Bow thruster
- Sea Recovery watermaker
- Alaska veteran
- Recent engine survey

Accommodations

The Offshore is a well-mannered and versatile pilothouse cruising yacht with spacious three stateroom interior. Classic and beamy, she rides softly in all weather thanks to her William Crealock hull design. With an extended boat deck, NELSEA offers excellent weather protection

to her aft deck, and using her upgraded 1500# davit can carry a great shore boat above.

A wide door to the swim step and the twin sliding doors to the salon provides a fresh open feel. The salon has opening windows with screens. There are also port and starboard pilothouse access door and inside access to the upper flybridge helm and boat deck. The master stateroom is located amidships and very private with copious storage and large shower. The two guest staterooms are accessed forward and share a head and shower.

NELSEA has been a family cruising yacht for over 2 decades and has been lavished with care for her annual cruises north. Numerous updates include Nobeltec and luscious soft goods completed 2012/2013. Boathouse kept and well maintained by knowledgeable owners.

Galley and Interior

Stepping inside from the cockpit you notice the wide double door entry allowing for a lively and open indoor-outdoor living space. There is new carpeting throughout the yacht. The cushions are new in modern designer fabrics. There is new headliner (2012/2013) which is easy to remove, as well as new laminates, wallpaper, and appliances as of 2012/2013. The galley is equipped with twin below-counter Sub Zero fridges which are teak faced. There are separate freezers located below counter in the pilothouse and then at the flybridge serving counter.

There is a Mediterranean gas range with oven, plus the microwave. The breakfast bar allows for simple service. The galley and salon feature excellent visibility in all directions. There are opening windows for fresh feel. Also mesh window screens to keep the insects at bay.

There is a Sea Recovery watermaker, washer dryer combi unit plus a separate dryer unit! The heads have Vacuflush toilets and were updated 2012/2013 with new sinks and faucets and sanitation hoses. Owner has updated the salon TV which sits on top of the custom cabinet. There are TV's in both the master and the VIP cabin. The interior of the Offshore 55 features louvered doors on cabinetry and is fully served by reverse cycle heat and air conditioning. All of the interior update was done at the "renowned mega yacht" Delta Shipyard in Seattle.

- Counter tops (new 2012)
- Breakfast bar with two adjustable height dining stools
- Mediterranean propane stove and oven
- Twin under counter Sub Zero refrigerators with teak facing
- Separate under counter Sub Zero freezer in pilothouse
- Chest freezer on Flybridge
- Microwave

- TracVision and new TV
- Pass-through to pilothouse
- Sea Recovery watermaker
- There is a dryer plus a separate washer/dryer combi unit by Equator
- Headliner designed for ease of accessibility (new 2012)
- Designer upholstery (new 2012)
- Phantom roller doors with window screens
- Hunter Douglas window shades
- Hi-lo table

Electrical Equipment

- 8 kw genset (2372 hours)
- 12 kw genset (2763 hours)
- Magnum inverter (new 2018)
- Main engine start batteries (new 2019)
- (5) 8D AGM house batteries
- Phase Three Start battery charger
- Starters rebuilt 2018
- Heavy duty alternator charges house batteries while underway

Pilothouse

The Pilothouse has excellent visibility in all directions. There is an L-settee with table which slides in or out for easy access. There are port and starboard access doors to the wide side decks. Looking aft one has excellent visibility. Plus there is a serving counter and pass through from the galley.

This areas is set up to function as bench seating if desired. To starboard there is chart table / serving counter with a below-counter freezer. There are inside steps for access to the flybridge in this area. The helm seat has easy reach for all items: overhead hatch, stabilizers, thruster, anchor

remote control, dual Furuno radars, AIS transponder, and the Nobletec chart plotter. There is an aft facing camera which allows the helmsperson to easily keep an eye out behind. There are two generators which can be remotely started here. Trac Phone and Trac Vision Domes for TV, voice and data.

- Subzero freezer
- Pilothouse doors to port and starboard
- Table slides in and out and also positions for sleeping
- Simrad Autopilot
- Icom VHF
- Icom SSB
- Rear facing camera
- Stabilizer controls
- Bow Thruster control
- Windlass remote
- Furuno Color video sounder
- Furuno Dome radar and Furuno wide array radar
- Big Bay Monitor with Nobletec Chart plotter
- AIS transponder
- Depth sounders: B&G Hydra system 2000 and two Furuno sounders, including Nobletec sounder module on the chart plotter.

Flybridge

- Sunbrella bimini folds easily for days in the sun
- Sunbrella cover for seats, helm and venturi
- Twin Helmseats
- L- Settee
- Sink/faucet and freezer below counter

- Twin teak-trim tables with pass through for easy access
- Sunbrella fabric
- Big Bay 15" screen
- SubZero A/C Freezer
- Propane double-bottle boxed and vented
- Brower 1500# rotational
- Windlass remote control
- 2006 Novurania 13' with 50 hp Honda outboard with full canvas cover, GPS and fishfinder, rod holders.

Deck and Hull

- Aft deck control station
- Extended aft deck fiberglass roof for sun/rain cover
- Teak aft deck
- Swim step staples
- Transom door
- Boathouse kept
- Maxwell 3500 windlass
- 350' Chain re-galvanized (2018)
- Foredeck seat with Nautical Sunbrella cushion
- Propane double-bottle boxed and vented
- Bottom has epoxy barrier coat
- Naiad Stabilizers
- Cruiseair Reverse cycle heat and air-conditioning (2 units and 5-zone control) (serviced December 2019)
- Switlick life raft mounted on top of pilothouse.

Engine and Mechanical

- Twin Detroit 6V92 diesels, 550hp each (5052 hours starboard / 5079 hours port)
- Engine survey January 2020 had positive results
- Three helm control stations (flybridge, pilothouse, aft deck)

- Block Heaters
- Each with twin Racor fuel water separators
- Twin Disc Transmissions (rebuilt 2012)
- Naiad Stabilizers
- Thruster with 2 x battery with a separate charger
- Engine room Fire suppression system
- Dripless shaft seals (new in 2016)
- Shafts (new 2016), props re-tuned
- Starters and alternators (new 2018), oil coolers, hydraulic lines, fuel cooler and hoses all replaced or serviced as needed
- 1400 rpm 9.5 knots @ 12 gallons per hour
- 2100 rpm 14 knots
- Tank tender (in-op)
- Full sight glasses in engine room
- Sea Recovery watermaker, 1200 GPD with easy-flush system
- Two generators

Upgrades to NELSEA

- Extended boat deck and aft deck covers
- Epoxy barrier coat
- Custom TV cabinet with pullout drawers
- HMC custom mattresses (2014)
- Wallpaper (new in 2014)
- Vacuflush heads
- Bathrooms have new sinks and designer faucets and hardware
- All new carpeting, laminate, cushions

- All new appliances (except washer/dryer)
- Interior teak and holly floors refinished
- Blackwater hoses (all new 2015)
- Torrid hot water heater (new 2017)
- All of the interior and exterior maintenance and updating has been done in Seattle at the "renowned mega yacht" Delta Shipyard.

Remarks

NELSEA is a pleasing vessel throughout, showing Offshore Yacht's well-earned reputation for quality and comfort and long-term value. The spacious three stateroom interior boasts an elegant amidships master suite accessed from the expansive salon and galley, the raised pilothouse with Furuno electronics at the center line helm, inside bridge access to the vast Flybridge and forward stairs to the two guest cabins. Covered walk around decks. Washer dryer, watermaker, and two additional freezers will ensure your cruising is comfortable! Easy to see on Lake Union in Seattle.

Исключения

При продаже яхты исключаются личные вещи владельца.

Отказ от ответственности

Компания предоставляет описание судна или яхты добросовестно, но не может гарантировать точность этой информации, а также не ручается за техническое состояние. Покупатель должен проинструктировать своих агентов или оценщиков исследовать представленную информацию более подробно, по собственному желанию. Продажа судна или яхты, изменение цены или снятие с продажи будет происходить без предварительного уведомления.

ФОТОГРАФИИ

26 JUNE 2016 198



DSC02268



IMG_4672



IMG_4682



Nelsea 01L



Nelsea 02L



Nelsea 03L



Nelsea 04L



Nelsea 16L



Nelsea 17L



Nelsea 18L



Nelsea 19L



Nelsea 22L



Nelsea 23L



Nelsea 24L



Nelsea 25L



Nelsea 26L



Nelsea 29L



Nelsea 30L



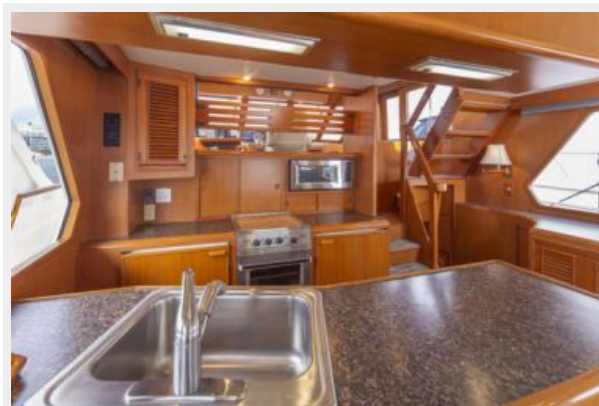
Nelsea 31L



Nelsea 32L



Nelsea 33L



Nelsea 34L



Nelsea 35L



Nelsea 36L



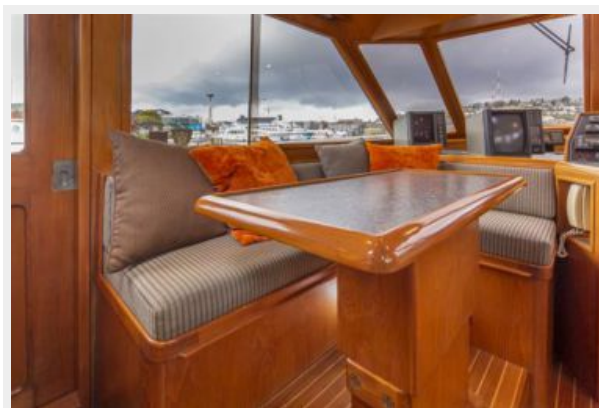
Nelsea 37L



Nelsea 39L



Nelsea 40L



Nelsea 41L



Nelsea 42L



Nelsea 43L



Nelsea 44L



Nelsea 45L



Nelsea 46L



Nelsea 47L



Nelsea 48L



Nelsea 49L



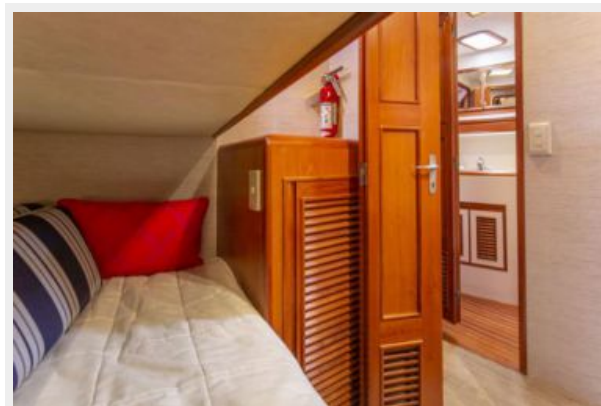
Nelsea 50L



Nelsea 51L



Nelsea 52L



Nelsea 53L



Nelsea 54L



Nelsea 55L



Nelsea 56L



Nelsea 57L



Nelsea 58L



Nelsea 59L



Nelsea 60L



Nelsea 61L



Nelsea 62L



Nelsea 63



Nelsea 63L



Nelsea 64L



Nelsea 65L



Nelsea 66L



Nelsea 67L



Nelsea 68L



Nelsea 69L



Nelsea 70L



КОНТАКТЫ

Андрей Шестаков (Andrey Shestakov) – ведущий яхтенный брокер отдела продаж яхт и судов компании Shestakov Yacht Sales Inc. Официальный представитель Shestakov Yacht Sales Inc. для русскоговорящих клиентов в центральном офисе компании в Майами/Форт Лодердейл/Флорида/США.

Контактная информация

Email: andrey@shestakovyachtsales.com

Web: shestakovyachtsales.com

Телефоны

Краснодарский край: **+7(918)465-66-44**

США, Майами, Флорида: **+1(954)274-4435**

Время работы

Понедельник – Суббота: **9:00 - 21:00**
EDT

Воскресенье: **Закрито**

Адрес



Harbour Towne Marina, 850 NE 3rd St,
STE 213, Dania, FL 33004