

AMADEUS 1 — CUSTOM



Builder: CUSTOM

Year Built: 2017

Model: Cruising/Racing Sailboat

Price: PRICE ON APPLICATION

Location: Portugal

LOA: 78' 3" (23.85m)

Beam: 19' 9" (6.02m)

Min Draft: 7' 6" (2.29m)

Max Draft: 14' 1" (4.29m)

Max Speed: 11.5 Kts. (13 MPH)

Our experienced yacht broker, Andrey Shestakov, will help you choose and buy a yacht that best suits your needs **Amadeus 1 — CUSTOM** from our catalogue. Presently, at Shestakov Yacht Sales Inc., we have a wide variety of yachts available on our sale's list. We also work in close contact with all the big yacht manufacturers from all over the world.

If you would like to buy a yacht **Amadeus 1 — CUSTOM** or would like help answering any questions concerning purchasing, selling or chartering a yacht, please call **+1(954)274-4435**

TABLE OF CONTENTS

TABLE OF CONTENTS	2
SPECIFICATIONS	3
Overview	3
Basic Information	3
Dimensions	3
Speed, Capacities and Weight	3
Accommodations	4
Hull and Deck Information	4
Engine Information	4
DETAILED INFORMATION	5
Construction Details	5
Main Particulars	5
Hydraulic and Electric Controls	6
Navigation and Comms	6
Principal Suppliers	6
Exclusions	7
Disclaimer	7
PHOTOS	8
CONTACTS	15
Contact details	15
Telephones	15
Office hours	15
Address	15

SPECIFICATIONS

Overview

Designed by Soto Acebal Naval Architects of Wally and Solaris fame, this magnificent yacht will fulfill your innermost desires for coastal passages or ocean crossings. Her state of the art equipment, superb engineering, and the stunning interior is impressive for sure -- but it is her uncommon ease of handling that really sets this yacht apart from any other fast cruiser. Sailors and motor yachtsmen alike can take command with confidence. Impeccably maintained, you will not find another yacht of this caliber anywhere near its price.

- Carbon fiber hull and deck;
- Flat interior floor, no steps inside;
- Hydraulic retractable keel;
- Teak deck 1.180 square feet

Basic Information

Category: Cruising/Racing Sailboat

Model Year: 2018

Year Built: 2017

Country: Portugal

Cockpit: Yes

Dimensions

LOA: 78' 3" (23.85m)

Beam: 19' 9" (6.02m)

Min Draft: 7' 6" (2.29m)

Max Draft: 14' 1" (4.29m)

Clearance: 106' 0" (32.31m)

Speed, Capacities and Weight

Max Speed: 11.5 Kts. (13 MPH)

Displacement: 84877.97087 Pounds

Water Capacity: 317.0064624 Gallons

Fuel Capacity: 457.01764996 Gallons

Accommodations

Total Cabins: 4

Total Berths: 6

Sleeps: 8

Total Heads: 4

Crew Cabin: 1

Crew Berths: 2

Crew Sleeps: 2

Crew Heads: 1

Hull and Deck Information

Hull Material: Composite

Hull Designer: Soto Acebal

Exterior Designer: Soto Acebal

Interior Designer: Jean Mark Piaton Yacht Design

Engine Information

Engines: 1

Manufacturer: Yanmar

Model: 4LHA-STP

Engine Type: Inboard

Fuel Type: Diesel

DETAILED INFORMATION

Construction Details

S/Y “AMADEUS“ - “One-off” design by Javier Soto Acebal.

Constructor: hull, deck, and general mechanical outfit: ML Boat-Works, Indaiatuba, São Paulo, Brazil, the constructor of Volvo VOR 70 “Brasil 1”, Carbon composite Sessentão (Nacira 60), Saravah (ML 54), Klimax e Zing III (Langan Design) – Responsible: Mechanical M.Sc. Eng. Marco Landi.

Material: Hull, deck, and structure in a composite of carbon “Corecell” from Gurit UK.

Structural calculations by the office of SDK Structures of Steve Koopman and Dirk Kramars.

Naval Architecture and Engineering design and management by Naval Architect and Marine Engineer Alejandro Botino, former designer on Javier Soto office and teacher on the Buenos Aires University.

Electric Design and Project by Electra Service of Guarujá, São Paulo Brazil, under the responsibility of Electrical Engineer Roberto Brener.

Design of distribution and hydraulic controls, the supply of the lifting keel, power packs, PLCs, and hydraulic push bottom controls by Cariboni SRL, of Ronco Briantino, Italy, design, and constructor of maxi boats, America Cups, and Volvo VOR 65.

Interior design and style by Jean Mark Piaton Yacht Design from Paris, designer of CNB and Jeanneau.

Rigging mast calculations and engineering modeling by AES (Applied Engineering Services) of New Zealand

General Project Management by Captain Rubem Santos Filho, M.Sc. in Business and O&M, with more than 40 years experience in marine construction, operation, repairs, and refits.

Interior furniture and finishing completely pre-fabricated on the muck-ups system in Bellotti Laricross and Nomex core material by Besk SRD, Fano, Italy (Wally constructor).

Specification, supply, installation, and commissioning of navigation and communication equipment by Pochon SA – La Rochelle, France with 75 years of experience and more than 40.000 equipment installed.

Delivered May 2018

Main Particulars

- LOA:23.87m
- Beam: 6.02m
- P: 2.7m
- Draft (keel up): 2.30m
- Draft (keel down): 4.30m
- Air draft: 35.50m
- Light Displacement: 38.5t
- Kell Weight: 13.5t
- Water Capacity: 1200Lts
- Fuel Capacity: 1730Lts
- Main engine: Yanmar Model 4LHA –STP – 240 HP
- Gear Box: ZF63A Ratio 2.68:1
- Max Speed at engine: 11.5Kts
- Generators Onan (1 x 21.5 KW and 1 x 13.5 KW) G220V/AC @60Hz

Hydraulic and Electric Controls

Cariboni (Italy) with a complete hydraulic electronic controlling system including:

- Anchor windlass
- Thrusters
- Winches
- Boom vang
- Hydraulic halyards jackets
- Furling boom
- Staysail
- Genoa and code zero furling
- Main and genoa Magic Trim
- Backstay and stern door

Navigation and Comms

- B&G H 5000 Hydra complete
- Furuno Radar chart plotter Navnet
- AIS Vespermarine transponder
- Spare Autopilot Raymarine
- Iridium - Motorola 9555
- Marine laptop & Maxsea Explorer Furuno (WiFi & 4G)
- Geofencing alarm GPS/SAT AT SAT 12 WiFipro

Principal Suppliers

- Shaft, propellers and propulsion systems: Bruntons Ltd – England
- Bow and Stern Thrusters: Lewmar 300 VRTTH 28 CC – 350 Stroke
- Freezers and Refrigerators: Custom Frigonautica SRL – Italy
- Watermaker: Sea Recovery - 285 l/h – AQM902 - fully automatic
- Accommodations water and blower systems: Gianneschi – Italy
- Sanitary Systems: Planus Carbon
- Air conditioning – Chillers VARC 48 Inverter (2 unit x 48.000 BTUs)
- Interior construction (block system): Besk - Italy (Wally)
- Mast: Sparcraft - France
- Hydraulic Furlings: Reckmann furling system – Germany - Genoa
- Staysail, Code Zero, and Furling boom
- Furling Boom: Romar Marine BV- Nederland
- Hydraulic Windlass: Lofrans – Italy - WDLVX4 for 10/12 mm with 120 m high tensile chain
- Deck hardware: Harken, Lewmar, and Spinlock
- Steering Systems: JP-3
- Sails Set– Olimpic Sails - Italy/Brazil
- Final painting: Awlgrip

Exclusions

Owner's personal belongings.

Disclaimer

The Company offers the details of this vessel or yacht in good faith but cannot guarantee or warrant the accuracy of this information nor warrant the condition of the vessel. A buyer should instruct his representatives, agents, or his surveyors, to investigate such details as the buyer desires validated. This vessel or yacht is offered subject to prior sale, price change, or withdrawal without notice.

PHOTOS

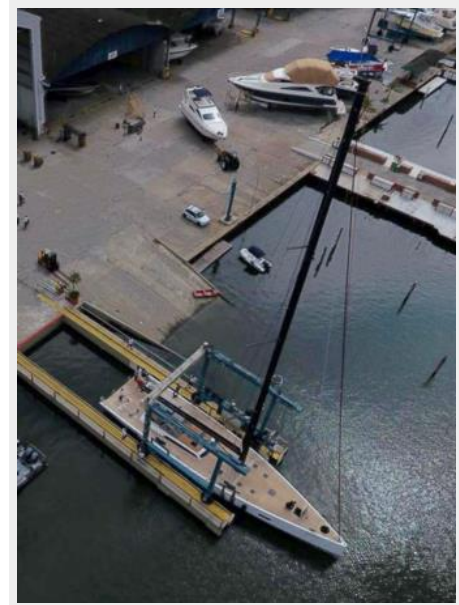
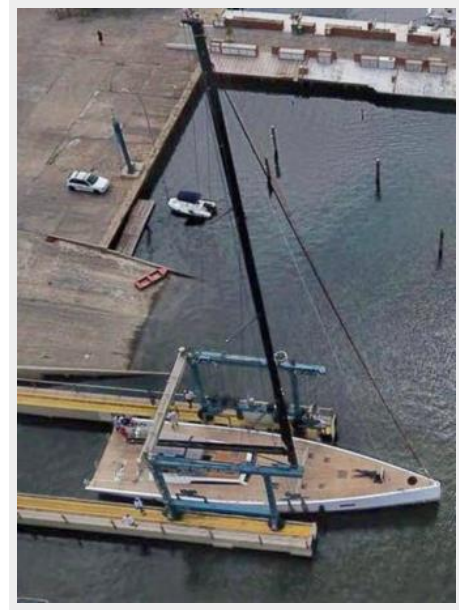














CONTACTS

Andrey Shestakov, leading yacht broker of the sales department of Shestakov Yacht Sales Inc. Shestakov Yacht Sales Inc., the official representative of the Miami/Fort Lauderdale FL headquarters.

Contact details

Email: andrey@shestakovyachtsales.com

Web: shestakovyachtsales.com/en/

Telephones

USA: +1(954)274-4435

Office hours

Monday – Saturday: **9:00 - 21:00** EDT

Sunday: **closed**

Address



Harbour Towne Marina, 850 NE 3rd St,
STE 213, Dania, FL 33004