

## VOYAGE — PRINCESS YACHTS



**Builder:** PRINCESS YACHTS

**Year Built:** 2014

**Model:** Motor Yacht

**Price:** PRICE ON APPLICATION

**Location:** Thailand

**LOA:** 88' 0" (26.82m)

**Beam:** 20' 9" (6.32m)

**Max Draft:** 5' 10" (1.78m)

Our experienced yacht broker, Andrey Shestakov, will help you choose and buy a yacht that best suits your needs **Voyage — PRINCESS YACHTS** from our catalogue. Presently, at Shestakov Yacht Sales Inc., we have a wide variety of yachts available on our sale's list. We also work in close contact with all the big yacht manufacturers from all over the world.

If you would like to buy a yacht **Voyage — PRINCESS YACHTS** or would like help answering any questions concerning purchasing, selling or chartering a yacht, please call **+1(954)274-4435**

# TABLE OF CONTENTS

|                              |    |
|------------------------------|----|
| TABLE OF CONTENTS            | 2  |
| SPECIFICATIONS               | 8  |
| Overview                     | 8  |
| Basic Information            | 8  |
| Dimensions                   | 8  |
| Speed, Capacities and Weight | 8  |
| Accommodations               | 8  |
| Hull and Deck Information    | 9  |
| Engine Information           | 9  |
| DETAILED INFORMATION         | 10 |
| Princess 88MY                | 10 |
| Exclusions                   | 10 |
| Disclaimer                   | 10 |
| PHOTOS                       | 11 |
| MY88-3                       | 11 |
| MY88-4                       | 11 |
| MY88-6                       | 11 |
| MY88-5                       | 11 |
| MY88-8                       | 11 |
| MY88-7                       | 11 |
| MY88-9                       | 12 |
| MY88-10                      | 12 |
| MY88-11                      | 12 |
| MY88-12                      | 12 |
| MY88-13                      | 12 |
| MY88-14                      | 12 |
| MY88-15                      | 13 |
| MY88-16                      | 13 |

---

|         |    |
|---------|----|
| MY88-17 | 13 |
| MY88-18 | 13 |
| MY88-19 | 13 |
| MY88-20 | 13 |
| MY88-21 | 14 |
| MY88-22 | 14 |
| MY88-23 | 14 |
| MY88-24 | 14 |
| MY88-26 | 14 |
| MY88-25 | 14 |
| MY88-27 | 15 |
| MY88-28 | 15 |
| MY88-29 | 15 |
| MY88-30 | 15 |
| MY88-32 | 15 |
| MY88-31 | 15 |
| MY88-33 | 16 |
| MY88-34 | 16 |
| MY88-35 | 16 |
| MY88-36 | 16 |
| MY88-37 | 16 |
| MY88-38 | 16 |
| MY88-39 | 17 |
| MY88-40 | 17 |
| MY88-41 | 17 |
| MY88-42 | 17 |
| MY88-44 | 17 |
| MY88-43 | 17 |
| MY88-45 | 18 |

---

---

|         |    |
|---------|----|
| MY88-46 | 18 |
| MY88-47 | 18 |
| MY88-48 | 18 |
| MY88-50 | 18 |
| MY88-49 | 18 |
| MY88-51 | 19 |
| MY88-52 | 19 |
| MY88-54 | 19 |
| MY88-53 | 19 |
| MY88-56 | 20 |
| MY88-55 | 20 |
| MY88-57 | 20 |
| MY88-58 | 20 |
| MY88-59 | 20 |
| MY88-60 | 20 |
| MY88-61 | 21 |
| MY88-62 | 21 |
| MY88-63 | 21 |
| MY88-64 | 21 |
| MY88-65 | 21 |
| MY88-66 | 21 |
| MY88-67 | 22 |
| MY88-68 | 22 |
| MY88-69 | 22 |
| MY88-70 | 22 |
| MY88-71 | 22 |
| MY88-72 | 22 |
| MY88-73 | 23 |
| MY88-74 | 23 |

---

---

|          |    |
|----------|----|
| MY88-76  | 23 |
| MY88-75  | 23 |
| MY88-77  | 24 |
| MY88-78  | 24 |
| MY88-80  | 24 |
| MY88-79  | 24 |
| MY88-82  | 25 |
| MY88-81  | 25 |
| MY88-83  | 25 |
| MY88-84  | 25 |
| MY88-86  | 26 |
| MY88-85  | 26 |
| MY88-87  | 26 |
| MY88-88  | 26 |
| MY88-89  | 27 |
| MY88-90  | 27 |
| MY88-91  | 27 |
| MY88-92  | 27 |
| MY88-93  | 27 |
| MY88-94  | 27 |
| MY88-96  | 28 |
| MY88-95  | 28 |
| MY88-97  | 28 |
| MY88-98  | 28 |
| MY88-99  | 28 |
| MY88-100 | 28 |
| MY88-101 | 29 |
| MY88-102 | 29 |
| MY88-103 | 29 |

---

---

|                 |    |
|-----------------|----|
| MY88-104        | 29 |
| MY88-105        | 29 |
| MY88-106        | 29 |
| MY88-107        | 30 |
| MY88-108        | 30 |
| MY88-110        | 30 |
| MY88-109        | 30 |
| MY88-111        | 31 |
| MY88-112        | 31 |
| MY88-113        | 31 |
| MY88-114        | 31 |
| MY88-115        | 31 |
| MY88-116        | 31 |
| MY88-117        | 32 |
| MY88-118        | 32 |
| MY88-119        | 32 |
| MY88-120        | 32 |
| MY88-122        | 32 |
| MY88-121        | 32 |
| MY88-123        | 33 |
| MY88-124        | 33 |
| MY88-126        | 33 |
| MY88-125        | 33 |
| MY88-127        | 33 |
| MY88-128        | 33 |
| MY88-129        | 34 |
| MY88-130        | 34 |
| CONTACTS        | 35 |
| Contact details | 35 |

---

---

|              |    |
|--------------|----|
| Telephones   | 35 |
| Office hours | 35 |
| Address      | 35 |

---

# SPECIFICATIONS

---

## Overview

---

- Twin CAT C32 ACERT diesel engines (2x 1,925hp)
- TRAC STAR 9X Hydraulic Fin Stabiliser System
- Long range (13,000 Litre capacity) cruising
- Walk-through bow seating with sunshade
- Transom Garage & Jet Ski Storage
- Flybridge Hardtop with Sunroof
- Hydraulic Bathing Platform
- Saloon fold-out Balcony
- "Special 88Y888 edition"

## Basic Information

---

**Category:** Motor Yacht

**Model Year:** 2014

**Year Built:** 2014

**Country:** Thailand

**Vessel Top:** Hardtop

**Fly Bridge:** Yes

**Cockpit:** Yes

## Dimensions

---

**LOA:** 88' 0" (26.82m)

**Beam:** 20' 9" (6.32m)

**Max Draft:** 5' 10" (1.78m)

## Speed, Capacities and Weight

---

**Displacement:** 147709.71554 Pounds

## Accommodations

---

**Total Cabins:** 4



---

## Hull and Deck Information

---

**Hull Material:** GRP

---

## Engine Information

---

**Engines:** 2

**Manufacturer:** CAT

**Model:** Caterpillar C32 ACERT

**Engine Type:** Inboard

**Fuel Type:** Diesel

---

## DETAILED INFORMATION

---

### Princess 88MY

---

This is an extremely rare "one-off" occasion to own THE ONLY PRINCESS 88MY OF ITS KIND to have ever been built so far by Princess Yachts! She is a custom long-range special edition with very unique features that is NOT found on any other Princess Yacht, nor most other yachts of similar/bigger size such as:- 13,000 lt custom long-range fuel tank, capable of 2,000nm at 11 knots!- Aft transom garage for wet-bike/jetski storage and watersports equipment- Superyacht Grey Hull finish- Special "lucky" edition "88Y888" The Princess Yacht 88 Motor Yacht is the very latest luxury motor yacht from the world renowned Princess, featuring many new features such as the saloon balcony/terrace, huge foredeck Portuguese bridge. This particular yacht is fitted with every options any discerning experienced yachtsmen could ever wish for, fully equipped for long-range cruising in style, safety and comfort. Some key specification:- Twin CAT C32 ACERT diesel engines (2x 1,825hp)- TRAC STAR 9X Hydraulic Fin Stabiliser System- 8 Guests in 4 Cabins & 4 Crew in 2 Cabins- Walk-through bow seating with sunshade- Transom Garage & Jet Ski Storage- Hydraulic Bow & Stern Thrusters- Flybridge Hardtop with Sunroof- Hydraulic Bathing Platform- Saloon fold-out Balcony- Flybridge Tender Crane and much more Lying fully covered in VIP under-cover garage from the beginning, the yacht has been meticulously maintained by a full time captain and crew, and an inspection is highly recommended!

### Exclusions

---

Owner's personal belongings.

### Disclaimer

---

The Company offers the details of this vessel or yacht in good faith but cannot guarantee or warrant the accuracy of this information nor warrant the condition of the vessel. A buyer should instruct his representatives, agents, or his surveyors, to investigate such details as the buyer desires validated. This vessel or yacht is offered subject to prior sale, price change, or withdrawal without notice.

# PHOTOS

**MY88-3**



**MY88-4**



**MY88-5**



**MY88-6**



**MY88-7**



**MY88-8**



**MY88-9**



**MY88-10**



**MY88-11**



**MY88-12**



**MY88-13**



**MY88-14**





**MY88-15**



**MY88-16**



**MY88-17**



**MY88-18**



**MY88-19**



**MY88-20**



**MY88-21**



**MY88-22**



**MY88-23**



**MY88-24**



**MY88-25**



**MY88-26**





**MY88-27**



**MY88-28**



**MY88-29**



**MY88-30**



**MY88-31**



**MY88-32**



**MY88-33**



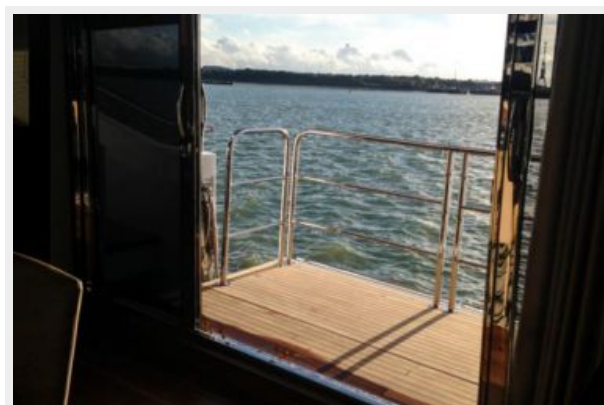
**MY88-34**



**MY88-35**



**MY88-36**



**MY88-37**



**MY88-38**





**MY88-39**



**MY88-40**



**MY88-41**



**MY88-42**



**MY88-43**



**MY88-44**



**MY88-45**



**MY88-46**



**MY88-47**



**MY88-48**



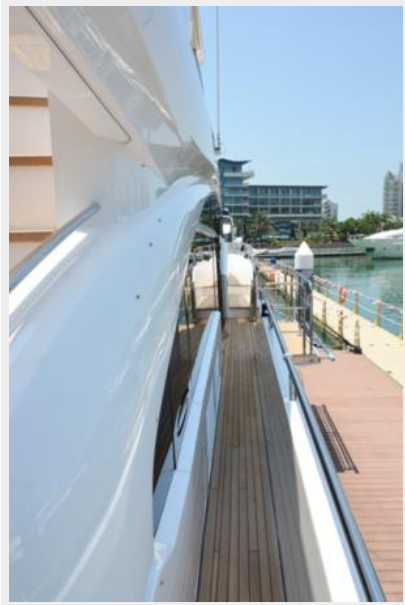
**MY88-50**



**MY88-49**



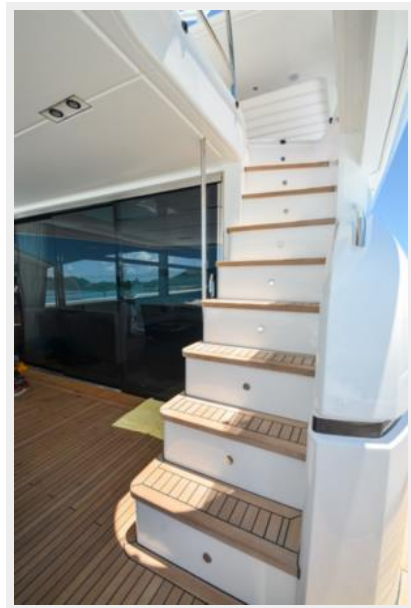
**MY88-51**



**MY88-52**



**MY88-54**



**MY88-53**





**MY88-55**



**MY88-56**



**MY88-57**



**MY88-58**



**MY88-59**



**MY88-60**



**MY88-61**



**MY88-62**



**MY88-63**



**MY88-64**



**MY88-65**



**MY88-66**





**MY88-67**



**MY88-68**



**MY88-69**



**MY88-70**



**MY88-71**



**MY88-72**



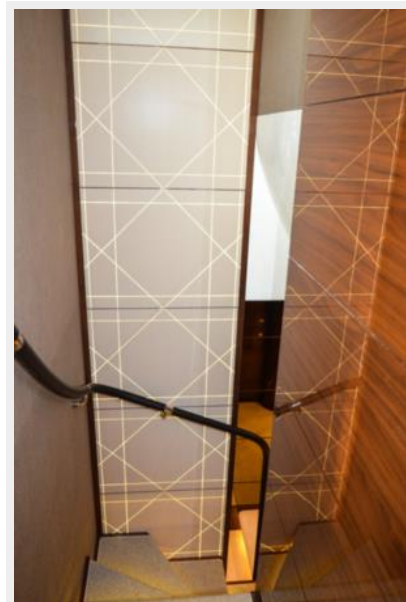
**MY88-73**



**MY88-74**



**MY88-76**



**MY88-75**



**MY88-77**



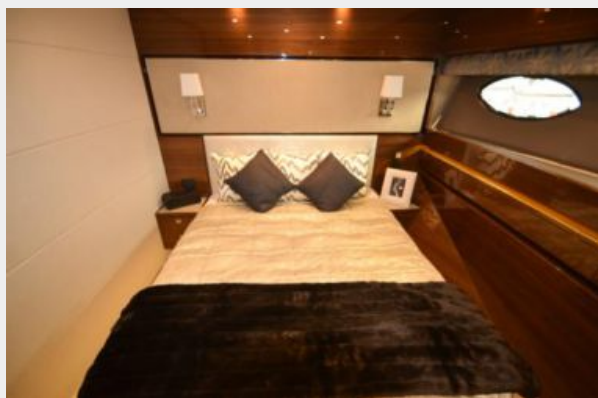
**MY88-78**



**MY88-80**



**MY88-79**





**MY88-81**



**MY88-82**



**MY88-83**



**MY88-84**



**MY88-85**



**MY88-86**



**MY88-87**



**MY88-88**



**MY88-89**



**MY88-90**



**MY88-91**



**MY88-92**



**MY88-93**



**MY88-94**





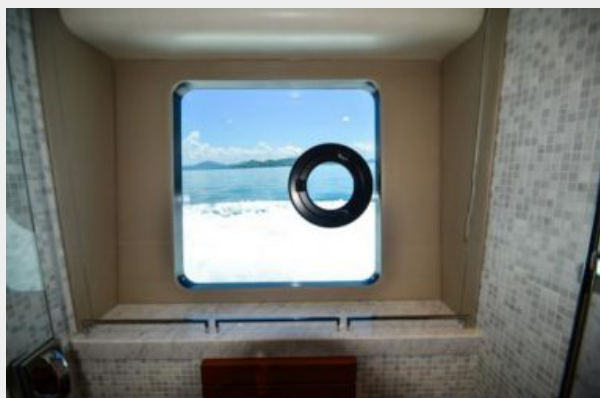
**MY88-95**



**MY88-96**



**MY88-97**



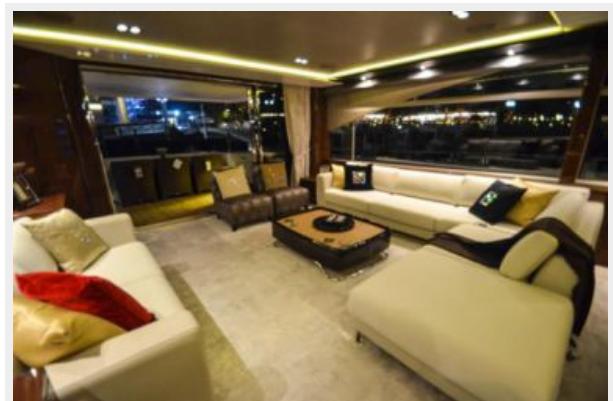
**MY88-98**



**MY88-99**



**MY88-100**



**MY88-101**



**MY88-102**



**MY88-103**



**MY88-104**



**MY88-105**



**MY88-106**





**MY88-107**



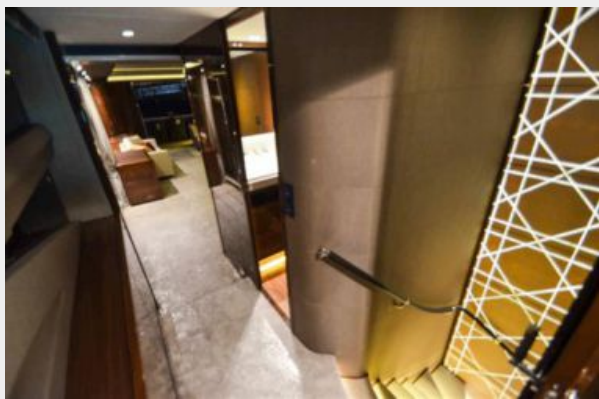
**MY88-108**



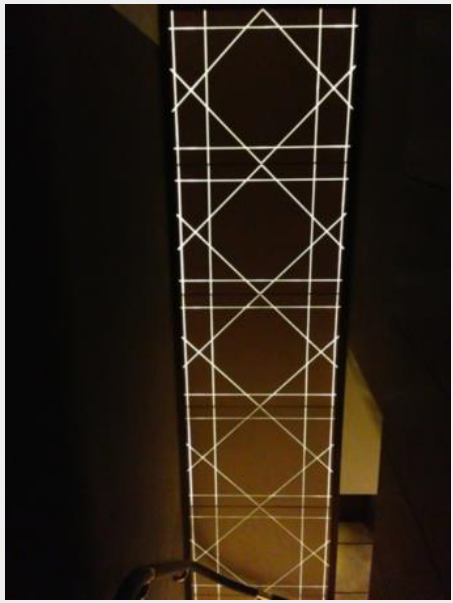
**MY88-110**



**MY88-109**



**MY88-111**



**MY88-112**



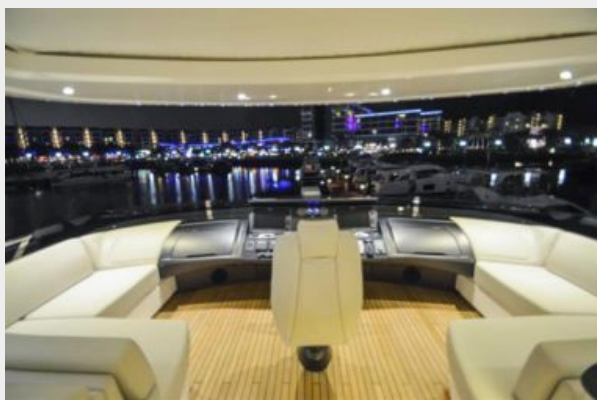
**MY88-113**



**MY88-114**



**MY88-115**



**MY88-116**





**MY88-117**



**MY88-118**



**MY88-119**



**MY88-120**



**MY88-121**



**MY88-122**





**MY88-123**



**MY88-124**



**MY88-125**



**MY88-126**



**MY88-127**



**MY88-128**



**MY88-129**



**MY88-130**



# CONTACTS

---

Andrey Shestakov, leading yacht broker of the sales department of Shestakov Yacht Sales Inc. Shestakov Yacht Sales Inc., the official representative of the Miami/Fort Lauderdale FL headquarters.

## Contact details

---

Email: [andrey@shestakovyachtsales.com](mailto:andrey@shestakovyachtsales.com)

Web: [shestakovyachtsales.com/en/](http://shestakovyachtsales.com/en/)

## Telephones

---

USA: +1(954)274-4435

## Office hours

---

Monday – Saturday: **9:00 - 21:00** EDT

Sunday: **closed**

## Address

---



Harbour Towne Marina, 850 NE 3rd St,  
STE 213, Dania, FL 33004