

NOOB — CANTIERI DI ARNO



Builder: Cantieri di Arno

Year Built: 1997

Model: Motor Yacht

Price: PRICE ON APPLICATION

Location: France

LOA: 88' 7" (27.00m)

Beam: 19' 11" (6.05m)

Max Draft: 5' 9" (1.75m)

Cruise Speed: 33 Kts. (38 MPH)

Max Speed: 37 Kts. (43 MPH)

Our experienced yacht broker, Andrey Shestakov, will help you choose and buy a yacht that best suits your needs **Noob — Cantieri di Arno** from our catalogue. Presently, at Shestakov Yacht Sales Inc., we have a wide variety of yachts available on our sale's list. We also work in close contact with all the big yacht manufacturers from all over the world.

If you would like to buy a yacht **Noob — Cantieri di Arno** or would like help answering any questions concerning purchasing, selling or chartering a yacht, please call **+1(954)274-4435**

TABLE OF CONTENTS

TABLE OF CONTENTS	2
SPECIFICATIONS	4
Overview	4
Basic Information	4
Dimensions	4
Speed, Capacities and Weight	4
Accommodations	5
Hull and Deck Information	5
Engine Information	5
PHOTOS	6
1 (69)	6
1 (70)	6
1 (67)	6
1 (65)	6
1 (55)	6
1 (63)	6
1 (62)	7
1 (60)	7
1 (53)	7
1 (73)	7
1 (6)	7
1 (4)	7
1 (1)	8
1 (2)	8
1 (4)	8
1 (5)	8
1 (13)	8
1 (21)	8

1 (74)	9
1 (19)	9
1 (17)	9
1 (22)	9
1 (27)	9
1 (26)	9
1 (43)	10
1 (42)	10
1 (44)	10
1 (35)	10
CONTACTS	11
Contact details	11
Telephones	11
Office hours	11
Address	11

SPECIFICATIONS

Overview

This Leopard 27m built by the famous Italian shipyard Cantiere Arno is one of the best high-performance hulls. The space on deck, with the outside bar, sofas and sunbeds is huge and perfect to welcome your family and friends. Elegantly designed, she offers a superb wooden interior with luxury finitions. She can accomodate until 8 guests in 3 spacious cabins and 4 crew. This Leopard 27m has been massively refitted in 2019/2020, including technical and cosmetic points. Ready for her new owner, this Leopard 27m in top condition is a superb opportunity.

Basic Information

Category: Motor Yacht

Model Year: 1997

Year Built: 1997

Refit Year: 2019

Refit Type: complete

Country: France

Dimensions

LOA: 88' 7" (27.00m)

Beam: 19' 11" (6.05m)

Max Draft: 5' 9" (1.75m)

Speed, Capacities and Weight

Cruise Speed: 33 Kts. (38 MPH)

Cruise Speed Range: 350

Max Speed: 37 Kts. (43 MPH)

Displacement: 127868.11196 Pounds

Water Capacity: 2000 Gallons

Fuel Capacity: 8000 Gallons

Accommodations

Total Cabins: 3

Total Berths: 7

Sleeps: 8

Crew Cabin: 2

Crew Sleeps: 4

Hull and Deck Information

Hull Material: GRP

Deck Material: Teak

Hull Configuration: Deep Vee

Hull Color: white

Exterior Designer: Arno Leopard

Interior Designer: Arno Leopard

Engine Information

Engines: 2

Manufacturer: MTU

Model: 16V2000 M91

Fuel Type: Diesel

PHOTOS

1 (69)



1 (70)



1 (67)



1 (65)



1 (55)



1 (63)



1 (62)



1 (60)



1 (53)



1 (73)



1 (6)



1 (4)



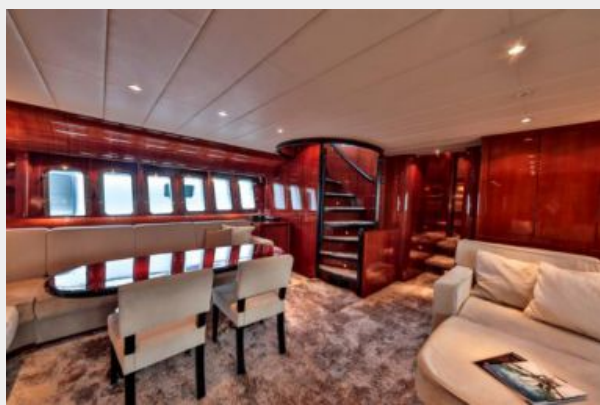
1 (1)



1 (2)



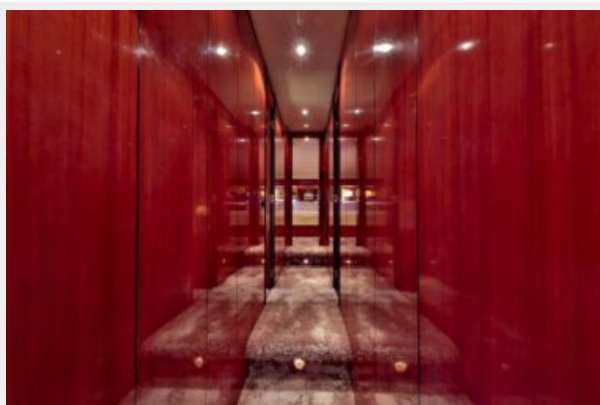
1 (4)



1 (5)



1 (13)



1 (21)



1 (74)



1 (19)



1 (17)



1 (22)



1 (27)



1 (26)



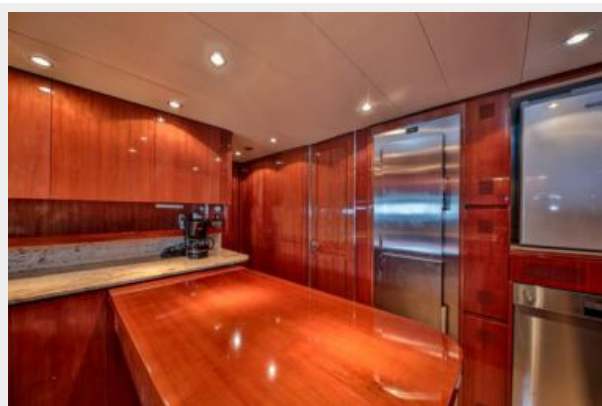
1 (43)



1 (42)



1 (44)



1 (35)



CONTACTS

Andrey Shestakov, leading yacht broker of the sales department of Shestakov Yacht Sales Inc. Shestakov Yacht Sales Inc., the official representative of the Miami/Fort Lauderdale FL headquarters.

Contact details

Email: andrey@shestakovyachtsales.com

Web: shestakovyachtsales.com/en/

Telephones

USA: +1(954)274-4435

Office hours

Monday – Saturday: **9:00 - 21:00** EDT

Sunday: **closed**

Address



Harbour Towne Marina, 850 NE 3rd St,
STE 213, Dania, FL 33004