

GYPSY — HUNTER



Builder: HUNTER

Year Built: 1983

Model: Sloop

Price: PRICE ON APPLICATION

Location: United States

LOA: 34' 0" (10.36m)

Beam: 11' 6" (3.51m)

Max Draft: 4' 6" (1.37m)

Our experienced yacht broker, Andrey Shestakov, will help you choose and buy a yacht that best suits your needs **GYPSY — HUNTER** from our catalogue. Presently, at Shestakov Yacht Sales Inc., we have a wide variety of yachts available on our sale's list. We also work in close contact with all the big yacht manufacturers from all over the world.

If you would like to buy a yacht **GYPSY — HUNTER** or would like help answering any questions concerning purchasing, selling or chartering a yacht, please call **+1(954)274-4435**

TABLE OF CONTENTS

TABLE OF CONTENTS	2
SPECIFICATIONS	4
Overview	4
Basic Information	4
Dimensions	4
Speed, Capacities and Weight	4
Accommodations	4
Hull and Deck Information	5
Engine Information	5
PHOTOS	6
7017978_20190314175300949_1_XLARGE	6
7017978_20190314175316984_1_XLARGE	6
7017978_20190314175336498_1_XLARGE	6
7017978_20190314175411700_1_XLARGE	6
7017978_20190315084746122_1_XLARGE	6
7017978_20190314181859789_1_XLARGE	6
7017978_20190314175712010_1_XLARGE	7
7017978_20190314175656044_1_XLARGE	7
7017978_20190314175733471_1_XLARGE	7
7017978_20190314181522813_1_XLARGE	7
7017978_20190314180010569_1_XLARGE	7
7017978_20190314180114037_1_XLARGE	7
7017978_20190314180155330_1_XLARGE	7
7017978_20190314181445420_1_XLARGE	7
7017978_20190314175950816_1_XLARGE	8
CONTACTS	9
Contact details	9
Telephones	9

Office hours 9

Address 9

SPECIFICATIONS

Overview

As you enter this extremely clean vessel from the companionway the first thing you notice is the galley off to starboard and the dinette immediately forward of it. To port is the entry to the aft master with a navigation table and settee further forward. Separating the main salon from the large v-berth area is the head/shower area. A large airy and comfortable main salon makes this sailboat a very desirable cruiser.

An almost new bimini, mainsail cover and canvas package adds to the amount of pride you will have in this very special cruiser.

Basic Information

Category: Sloop

Model Year: 1983

Year Built: 1983

Country: United States

Dimensions

LOA: 34' 0" (10.36m)

LWL: 28' 3" (8.61m)

Beam: 11' 6" (3.51m)

Max Draft: 4' 6" (1.37m)

Speed, Capacities and Weight

Displacement: 11820 Pounds

Water Capacity: 65 Gallons

Fuel Capacity: 25 Gallons

Accommodations

Total Cabins: 2

Hull and Deck Information

Hull Material: Fiberglass

Engine Information

Engines: 1

Manufacturer: Yanmar

Model: 3GMF

Engine Type: Inboard

Fuel Type: Diesel

PHOTOS

7017978_20190314175300949_1_XLARGE



7017978_20190314175316984_1_XLARGE



7017978_20190314175336498_1_XLARGE



7017978_20190314175411700_1_XLARGE



7017978_20190315084746122_1_XLARGE



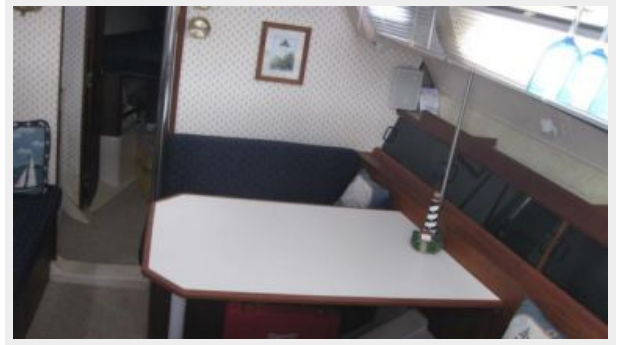
7017978_20190314181859789_1_XLARGE



7017978_20190314175712010_1_XLARGE



7017978_20190314175656044_1_XLARGE



7017978_20190314175733471_1_XLARGE



7017978_20190314181522813_1_XLARGE



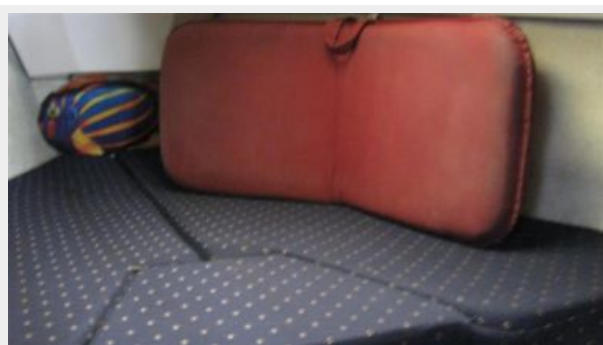
7017978_20190314180010569_1_XLARGE



7017978_20190314180114037_1_XLARGE



7017978_20190314180155330_1_XLARGE



7017978_20190314181445420_1_XLARGE



7017978_20190314175950816_1_XLARGE



CONTACTS

Andrey Shestakov, leading yacht broker of the sales department of Shestakov Yacht Sales Inc. Shestakov Yacht Sales Inc., the official representative of the Miami/Fort Lauderdale FL headquarters.

Contact details

Email: andrey@shestakovyachtsales.com

Web: shestakovyachtsales.com/en/

Telephones

USA: +1(954)274-4435

Office hours

Monday – Saturday: **9:00 - 21:00** EDT

Sunday: **closed**

Address



Harbour Towne Marina, 850 NE 3rd St,
STE 213, Dania, FL 33004