

ANNELIESE — CONTENDER



Builder: CONTENDER

Year Built: 2010

Model: Center Console

Price: PRICE ON APPLICATION

Location: United States

LOA: 39' 0" (11.89m)

Beam: 10' 10" (3.30m)

Min Draft: 2' 0" (0.61m)

Cruise Speed: 45 Kts. (52 MPH)

Max Speed: 60 Kts. (69 MPH)

Our experienced yacht broker, Andrey Shestakov, will help you choose and buy a yacht that best suits your needs **ANNELIESE — CONTENDER** from our catalogue. Presently, at Shestakov Yacht Sales Inc., we have a wide variety of yachts available on our sale's list. We also work in close contact with all the big yacht manufacturers from all over the world.

If you would like to buy a yacht **ANNELIESE — CONTENDER** or would like help answering any questions concerning purchasing, selling or chartering a yacht, please call **+1(954)274-4435**

TABLE OF CONTENTS

TABLE OF CONTENTS	2
SPECIFICATIONS	4
Overview	4
Basic Information	4
Dimensions	4
Speed, Capacities and Weight	4
Hull and Deck Information	4
Engine Information	5
DETAILED INFORMATION	6
Electronics	6
Features and Options	6
Exclusions	7
Disclaimer	7
PHOTOS	8
Annelie_Profiles2	8
Annelie_Profiles3	8
Annelie_Profiles4	8
Annelie_Profiles5	8
Annelie_Profiles14	9
Annelie_Bow1	9
Annelie_Bow7	9
Annelie_Bow4	9
Annelie_Bow5	9
Annelie_Helm1	9
Annelie_Helm2	10
Annelie_Helm7	10
Annelie_Cockpit4	10
Annelie_Cockpit2	10

Annelie_Cockpit7	10
Annelie_Cockpit5	10
Annelie_Cockpit6	11
Annelie_Cockpit9	11
Annelie_Head1	11
Annelie_Head2	11
CONTACTS	12
Contact details	12
Telephones	12
Office hours	12
Address	12

SPECIFICATIONS

Overview

The 39ST from Contender boats is one of the best riding center consoles ever built. With a two step hull design giving almost a 20% increase in efficiency and 10% performance gains, this bluewater boat has incredible speed and range with her triple 350 Yamaha fourstrokes. The ability to make long high speed runs in adverse conditions makes this boat a favorite. Some of her notable features include factory forward seating, a finished head in console, an oversized leaning post with rear facing seat and insulated cooler. A full Simrad electronics package, Fusion stereo and JL audio sound system, and much more!

Her gelcoat and metal have been ceramic coated and shine like new!

She is turnkey and ready for her next owner.

Basic Information

Category: Center Console

Model Year: 2011

Year Built: 2010

Country: United States

Dimensions

LOA: 39' 0" (11.89m)

Beam: 10' 10" (3.30m)

Min Draft: 2' 0" (0.61m)

Speed, Capacities and Weight

Cruise Speed: 45 Kts. (52 MPH)

Max Speed: 60 Kts. (69 MPH)

Displacement: 15500 Pounds

Fuel Capacity: 500 Gallons

Hull and Deck Information

Hull Material: Fiberglass

Engine Information

Engines: 3

Manufacturer: Yamaha

Model: F350

Engine Type: Outboard

Fuel Type: Gas

DETAILED INFORMATION

Electronics

- Simrad NSS Evo 2
- Twin 12 inch multi-function displays
- Simrad OP40 autopilot
- Simrad sonar
- Simrad broadband radar
- Icom 502 VHF with remote command mic
- Fusion Head unit with Bluetooth.
- (2) JL Audio amps
- (6) JL Audio speakers with Tweeters
- (2) JL Audio sub-woofers
- Automatic battery charger
- (4) AGM heavy duty batteries
- Spot Trace GPS tracker

Features and Options

- Factory forward seating
- Factory Hardtop with Rupp Top Gun outriggers and 6 Rocket launchers, LED spreader lights
- Over sized cockpit leaning-post with backrest, rear facing seating, tackle storage, and insulated cooler.
- 3 sided acrylic enclosure
- Custom Seadeck foot pad at console with Contender logo
- Freshwater system with shower at transom and sink in console
- Saltwater washdown
- Head with holding tank
- Twin 40 gallon transom live wells
- 260 Gallon insulated fwd. fish box
- 145 Gallon insulated in deck fish box
- (2) 105 Gallon insulated aft fishboxes
- Rod storage
- (18) Gemlux rodholders
- Full combing pads
- Removable aft cockpit L shaped seating
- Custom stainless tow eye
- Recessed handrail
- Anchor windlass

Exclusions

Owner's personal belongings.

Disclaimer

The Company offers the details of this vessel or yacht in good faith but cannot guarantee or warrant the accuracy of this information nor warrant the condition of the vessel. A buyer should instruct his representatives, agents, or his surveyors, to investigate such details as the buyer desires validated. This vessel or yacht is offered subject to prior sale, price change, or withdrawal without notice.

PHOTOS

Annelie_Profiles2



Annelie_Profiles3



Annelie_Profiles4



Annelie_Profiles5



Annelie_Profiles14



Annelie_Bow1



Annelie_Bow7



Annelie_Bow4



Annelie_Bow5



Annelie_Helm1



Annelie_Helm2



Annelie_Helm7



Annelie_Cockpit4



Annelie_Cockpit2



Annelie_Cockpit7



Annelie_Cockpit5



Annelie_Cockpit6



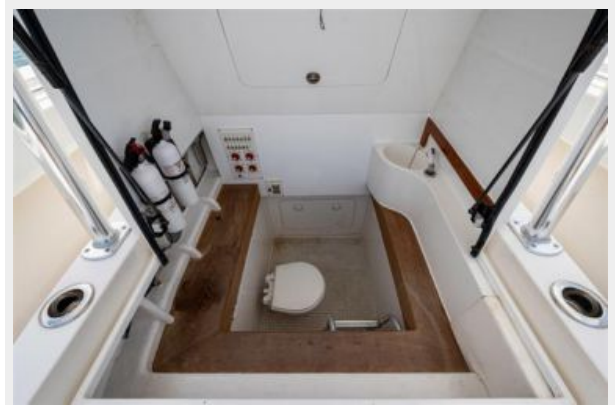
Annelie_Cockpit9



Annelie_Head1



Annelie_Head2



CONTACTS

Andrey Shestakov, leading yacht broker of the sales department of Shestakov Yacht Sales Inc. Shestakov Yacht Sales Inc., the official representative of the Miami/Fort Lauderdale FL headquarters.

Contact details

Email: andrey@shestakovyachtsales.com

Web: shestakovyachtsales.com/en/

Telephones

USA: +1(954)274-4435

Office hours

Monday – Saturday: **9:00 - 21:00** EDT

Sunday: **closed**

Address



Harbour Towne Marina, 850 NE 3rd St,
STE 213, Dania, FL 33004