

## MYSTIC — BENETEAU



**Builder:** BENETEAU

**Year Built:** 2006

**Model:** Cruising Sailboat

**Price:** PRICE ON APPLICATION

**Location:** United States

**LOA:** 37' 0" (11.28m)

**Beam:** 4' 11" (1.50m)

**Max Draft:** 4' 11" (1.50m)

Our experienced yacht broker, Andrey Shestakov, will help you choose and buy a yacht that best suits your needs **Mystic — BENETEAU** from our catalogue. Presently, at Shestakov Yacht Sales Inc., we have a wide variety of yachts available on our sale's list. We also work in close contact with all the big yacht manufacturers from all over the world.

If you would like to buy a yacht **Mystic — BENETEAU** or would like help answering any questions concerning purchasing, selling or chartering a yacht, please call **+1(954)274-4435**

# TABLE OF CONTENTS

TABLE OF CONTENTS	2
SPECIFICATIONS	4
Overview	4
Basic Information	4
Dimensions	4
Speed, Capacities and Weight	4
Accommodations	4
Hull and Deck Information	4
Engine Information	5
DETAILED INFORMATION	6
Overview	6
Exclusions	8
Disclaimer	8
PHOTOS	9
3	9
2	9
5	9
4	9
6	10
7	10
8	10
9	10
10	11
11	11
13	11
12	11
15	11
14	11

---

16	12
CONTACTS	13
Contact details	13
Telephones	13
Office hours	13
Address	13

---

# SPECIFICATIONS

---

## Overview

---

\*\* Furling mainsail and genoa \*\* Owner & Guest staterooms \*\* AC/heat throughout \*\* Many opening hatches and ports \*\* Yanmar diesel/ low hours \*\* Folding wheel \*\* Anchor windlass \*\* Much more! \*\*

## Basic Information

---

**Category:** Cruising Sailboat

**Sub Category:** Sloop

**Model Year:** 2006

**Year Built:** 2006

**Country:** United States

## Dimensions

---

**LOA:** 37' 0" (11.28m)

**Beam:** 4' 11" (1.50m)

**Max Draft:** 4' 11" (1.50m)

**MFG Length:** 37' 0" (11.28m)

## Speed, Capacities and Weight

---

**Displacement:** 15013 Pounds

**Water Capacity:** 99 Gallons

**Fuel Capacity:** 33 Gallons

## Accommodations

---

**Total Cabins:** 2

**Total Heads:** 1

## Hull and Deck Information

---

**Hull Material:** Fiberglass

---

## Engine Information

---

**Engines:** 1

**Manufacturer:** Yanmar

**Model:** 4JH3E

**Engine Type:** Inboard

**Fuel Type:** Diesel

---

# DETAILED INFORMATION

---

## Overview

---

### HIGHLIGHTS

- Owner stateroom and guest stateroom
- AC/heat throughout
- Spacious saloon - with warm varnished wood joinery
- Many opening hatches and portlights; additional fixed ports and skylights
- Furling mainsail and genoa
- Low hours on Yanmar diesel
- Chartplotter, autopilot, and more

ACCOMMODATION Throughout: Rich, varnished teak joinery; blue upholstery; SMX reverse-cycle AC/heat; Generous light and ventilation via opening ports and hatches - and skylights and fixed ports; durable "faux-teak" sole; cabin fans.

- Forward stateroom -w/ hanging locker, shelves, and locker -w/shelves
- Main saloon with U-shape dinette (converts to double berth) to port and settee/berth to starboard. Forward-facing nav-station, aft to starboard; L-shape galley (see below) to port.
- Enclosed head compartment, aft to starboard -w/ wet locker, vanity/sink, and separate shower stall.
- Aft stateroom to port -w/ hanging locker and shelves.

### Additional specs:

- 5 Lewmar overhead hatches -w/ Oceanaire retracting screen/shades
- 7 opening ports -w/screens
- 3 large fixed "skylights" forward -w/slider-shades
- 6 fixed ports - in coachroof and hull-sides.
- Ample overhead lighting and reading lamps
- Toshiba 21" flat-screen TV on main bulkhead, to port

### GALLEY

- 2 burner Beneteau "Force-10 style" LPG stove -w/oven
- Origo microwave
- Side-loading teak-faced Seafrust refrigerator
- Top-loading Seafrust fridge/freezer
- Double SS sinks -w/ hot and cold pressure water
- Ample storage and counterspace

## SAILS and RIGGING

- Pryde furling mainsail; In-mast furling
- Pryde 140% furling genoa; Profurl Furler
- Rod-style boom vang
- Fractional rig
- Anodized aluminum furling mast with boom.
- Running rigging: mainsheet with blocks. two genoa sheets, genoa halyard, mainsail halyard, genneker halyard, topping lift, mainsail outhaul, mainsail sheet traveler.
- 4 Lewmar CSTO 2-speed, self-tailing winches: 2 #48 primary on coamings, 2 #30 halyard, etc on coachroof.
- 8 Spinlock line stoppers on coachroof; 7 Garhauer blocks at most collar

## ELECTRICAL

- 110V shorepower -w/ 2 30A cords
- 5 110V outlets
- Xantrex 20A Truecharge battery charger
- 12V "house" batteries
- 12V engine-start battery
- 12V panel -w/ 14 breakers
- Galvanic isolator
- Solar trickle charger

## ELECTRONICS

- Raymarine ST6001 Autopilot
- Raymarine ST60 instruments: depth, knot/log, windspeed/direction
- Raymarine C80 GPS chartplotter at helm
- ICOM M-402 VHF transceiver
- Raymarine Seataalk RS232 connection
- Raystar- 125 GPS antenna on stern pulpit; FM/AM/VHF/TV antennas on masthead, Forespar Lightning Master on masthead
- Sony FM/AM/XM/CD stereo -w/remote; 4 speakers (cabin and cockpit)
- Telephone jack; cable TV jack
- iPod interface

## DECK and OTHER EQUIPMENT

- Large 3-bow bimini top
- Beneteau signature pivoting wheel/pedestal
- Compass and engine control lever - on the pedestal
- Removable teak drop-leaf table
- Walk-thru transom -w/swim platform and folding SS swim ladder
- Plow anchor -w/ chain and rode
- Lewmar electric anchor windlass -w/ up/down switch

- Locker life-raft stowage
- 3 deep lazarette lockers; LPG locker
- Engine instrument panel on coaming
- Manual and electric bilge pumps
- "Lexan-style" companionway slider and drop-boards
- Slotted aluminum toerail
- Bow and stern pulpits; "corner-seats" at stern pulpit
- Access to swim platform by tilting helmsman's seat
- Teak-inlaid transom skirt with protective rubber strip; Teak-inlaid swim platform
- Teak inlaid cockpit seats (refurbished '19)
- Teak treads on coaming
- Docklines and fenders; USCG gear

---

## Exclusions

---

Owner's personal belongings.

---

## Disclaimer

---

The Company offers the details of this vessel or yacht in good faith but cannot guarantee or warrant the accuracy of this information nor warrant the condition of the vessel. A buyer should instruct his representatives, agents, or his surveyors, to investigate such details as the buyer desires validated. This vessel or yacht is offered subject to prior sale, price change, or withdrawal without notice.

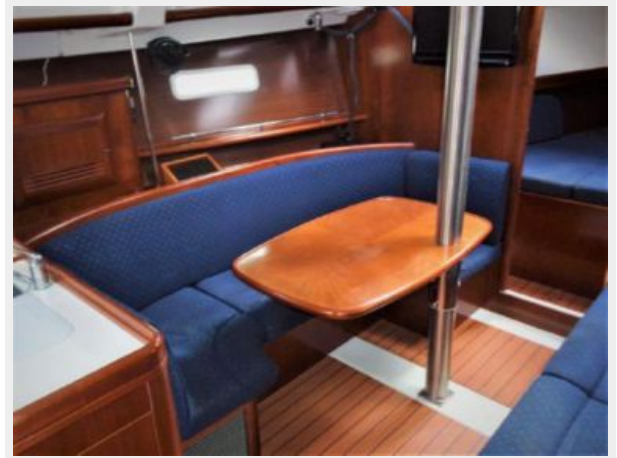


# PHOTOS

2



3



4



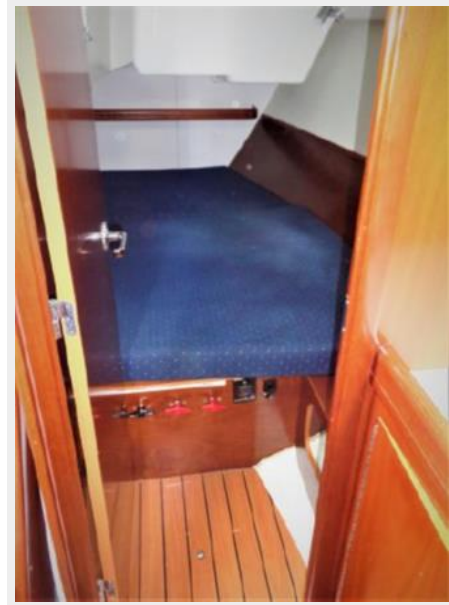
5



6



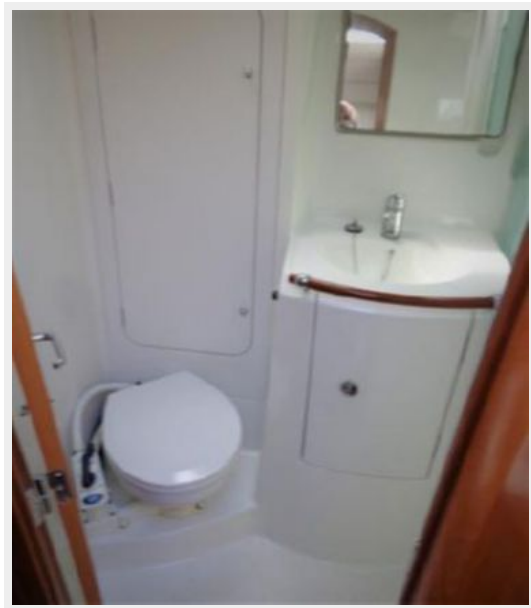
7



8



9



10



11



12



13



14



15



16



# CONTACTS

---

Andrey Shestakov, leading yacht broker of the sales department of Shestakov Yacht Sales Inc. Shestakov Yacht Sales Inc., the official representative of the Miami/Fort Lauderdale FL headquarters.

## Contact details

---

Email: [andrey@shestakovyachtsales.com](mailto:andrey@shestakovyachtsales.com)

Web: [shestakovyachtsales.com/en/](http://shestakovyachtsales.com/en/)

## Telephones

---

USA: +1(954)274-4435

## Office hours

---

Monday – Saturday: **9:00 - 21:00** EDT

Sunday: **closed**

## Address

---



Harbour Towne Marina, 850 NE 3rd St,  
STE 213, Dania, FL 33004