

VERBOTEN — TARTAN



Builder: TARTAN

Year Built: 1993

Model: Cruising Sailboat

Price: PRICE ON APPLICATION

Location: United States

LOA: 35' 0" (10.67m)

Beam: 11' 9" (3.58m)

Max Draft: 4' 10" (1.47m)

Our experienced yacht broker, Andrey Shestakov, will help you choose and buy a yacht that best suits your needs **Verboten — TARTAN** from our catalogue. Presently, at Shestakov Yacht Sales Inc., we have a wide variety of yachts available on our sale's list. We also work in close contact with all the big yacht manufacturers from all over the world.

If you would like to buy a yacht **Verboten — TARTAN** or would like help answering any questions concerning purchasing, selling or chartering a yacht, please call **+1(954)274-4435**

TABLE OF CONTENTS

| | |
|------------------------------|----|
| TABLE OF CONTENTS | 2 |
| SPECIFICATIONS | 5 |
| Overview | 5 |
| Basic Information | 5 |
| Dimensions | 5 |
| Speed, Capacities and Weight | 5 |
| Accommodations | 6 |
| Hull and Deck Information | 6 |
| Engine Information | 6 |
| DETAILED INFORMATION | 7 |
| Overview | 7 |
| Exclusions | 9 |
| Disclaimer | 9 |
| PHOTOS | 10 |
| 2 | 10 |
| 3 | 10 |
| 5 | 10 |
| 4 | 10 |
| 6 | 10 |
| 7 | 10 |
| 9 | 11 |
| 8 | 11 |
| 10 | 11 |
| 11 | 11 |
| 12 | 11 |
| 13 | 11 |
| 14 | 12 |
| 15 | 12 |

| | |
|----|----|
| 16 | 12 |
| 17 | 12 |
| 18 | 12 |
| 19 | 12 |
| 20 | 13 |
| 21 | 13 |
| 22 | 13 |
| 23 | 13 |
| 24 | 13 |
| 25 | 13 |
| 26 | 14 |
| 27 | 14 |
| 28 | 14 |
| 29 | 14 |
| 30 | 14 |
| 31 | 14 |
| 32 | 15 |
| 33 | 15 |
| 34 | 15 |
| 35 | 15 |
| 36 | 16 |
| 37 | 16 |
| 38 | 16 |
| 39 | 16 |
| 40 | 17 |
| 41 | 17 |
| 42 | 17 |
| 43 | 17 |
| 44 | 17 |

| | |
|-----------------|----|
| CONTACTS | 18 |
| Contact details | 18 |
| Telephones | 18 |
| Office hours | 18 |
| Address | 18 |

SPECIFICATIONS

Overview

VERBOTEN is a well-loved Tartan 3500. One owner who is knowledgeable and caring. She has been consistently updated and kept in first-class condition. The Tartan 3500 was deigned by Tim Jackett as a Performance Cruiser, although many pickle dishes have surrounded the 3500 in its history. Wonderful all around boat, built to high standards and delivers on performance and comfort!Recent updates include - re-painting spars, new inverter / charger, upgraded battery banks, hi-output charger, Refrigeration, Stripped / Epoxied bottom, headsails & More. This one won't last long, call today to see her. You'll be glad you did!

Basic Information

Category: Cruising Sailboat

Sub Category: Cruising/Racing Sailboat

Model Year: 1993

Year Built: 1993

Country: United States

Dimensions

LOA: 35' 0" (10.67m)

LWL: 30' 0" (9.14m)

Beam: 11' 9" (3.58m)

Max Draft: 4' 10" (1.47m)

Clearance: 52' 0" (15.85m)

MFG Length: 35' 0" (10.67m)

Speed, Capacities and Weight

Displacement: 11400 Pounds

Water Capacity: 72 Gallons

Holding Tank: 16 Gallons

Fuel Capacity: 25 Gallons

Accommodations

Total Cabins: 2

Total Berths: 4

Total Heads: 1

Hull and Deck Information

Hull Material: Fiberglass

Engine Information

Engines: 1

Manufacturer: Yanmar

Model: 3GM

Engine Type: Inboard

Fuel Type: Diesel

DETAILED INFORMATION

Overview

General Comments Designed to be a well-mannered, firm and able sailing vessel, the 3500 delivers performance. Her moderate beam and powerful ends, with either the beavertail keel provide excellent stability and sail-carrying ability. The long waterline and strong rig offer fast passages and a competitive edge, while the contoured cockpit seats, wide coamings and pedestal steering ensure a skipper's comfort both at sea and dockside. The pattern non-skid of her deck maximizes safety, comfort and function. Logical in layout, she has 2-foot wide side decks and inboard shrouds that afford easy passage both fore and aft, plus allow optimum sheeting angles for efficient upwind sailing. Mounted through solid glass and aluminum backing plates, her quality equipment is strategically placed for either cruising or racing pleasure. Leading all lines aft to a cockpit keeps her quite manageable by one. She is fully fitted for cruising comfort with good stowage and generous accommodations. Her interior is highlighted by Tartan's trademark teak joinery and hand rubbed oil finish. The voluminous curves coupled with the clever use of angular bulkheads enable her nav station to be tucked aft while providing plenty of room to stand and move about.

Accommodations The Tartan 3500 has a delightful layout. The forward cabin is the owner cabin. It has a good sized double bunk, hatches & ports for ventilation, port & starboard bureaus / hanging locker and drawer storage under the bunk. The main cabin has dual settees, with a centerline drop leaf table to seat 6 for dining. Surrounding lockers provide for excellent storage throughout the salon area. The table has vertical and drawer storage as well. The galley is along the starboard side and has a large sink, stove with oven and ample storage. The icebox has been reconfigured and properly insulated, such that the Frig-o-bot keel cooled refrigeration system works very efficiently. Her head is large and boasts a separate stall shower, household size head and for the divers can accommodate three diving tanks (removable). Aft of the galley is the nav station. Current modified and updated the breaker panel, moving the breakers outboard for better access for navigational functionality. Chartplotter, Laptop mount and battery monitoring all happens at the nav station. Plenty of storage under the seat and in the nav table, along with a custom chart storage tube. The aft cabin has a suitable double bunk for guests and bureau storage. batteries, and engine access are under / around the aft bunk. This layout works on many levels and has been the envy of many a visiting sailor!

Galley

- Hot & Cold Pressure Water
- Foot Pump - Fresh Water
- Large Sink
- Large icebox with Refrigeration
- Two Burner Stove w/ Oven - LPG
- Propane Sniffer for Safe Cooking
- Garbage Bin
- Ample Storage Lockers & Drawers

Electrical and Systems

- Paneltronics 12 VDC Panel
- Paneltronics 110 VAC Shore Power System
- 3 group 27 batteries -- 2 House 1 Engine
- Adler Barbour Refrigeration
- Courtesy Lights
- Manual and Automatic Bilge Pumps
- Two Water Tanks (Manifold under galley sink)

Electronics

- RayMarine ST 60 TRIDATA Helm
- RayMarine ST 6- WIND Helm
- RayMarine ST 50 GPS / Multi Nav Station
- RayMarine ST 4000 Autopilot
- RayMarine E80 Radar Plotter at Helm
- Stern Pole 4KW Radar w/ Guard
- VHF Radio
- Stereo

Deck and Rigging

- Offshore Spars Mast & Boom - Aluminum
- Strong Track for Mainsail Luff
- Harken Furler for Genoa
- All Control Lines Led Aft to Stoppers
- Custom Deck Locker Lid for Windlass / Anchor Rode
- OFFSHORE Rigid Rod Vang
- Lazy Jacks
- Edson Steering Pedestal / Engine Controls
- Five Harken Deck Winches
- Winch Handles
- All Ancillary Sailing Gear

Sails and Canvas

- Full Batten Mainsail
- 130% Roller Furling Genoa
- Cruising Chute w/ Sock
- Dodger - Bimini - Connector decent shape, recently re-stitched
- Mainsail Cover

Additional Information VERBOTEN has been loving sailed and updated. Owners have poured a lot of energy and money into keeping her current and sailing well. Schedule a time to see her today, you will thank yourself later!

- Flag Blue Awlgrip Hull
- White Boot & Gold Cove Stripes
- White Deck
- Contrasting / Sand NonSkid on Deck
- Yanmar Engine
- Cockpit Floor Gratings - Custom built / finished
- Hull # 36 of the Tartan 3500 Series
- READY TO GO SAILING NOW!

Exclusions

Owner's personal belongings.

Disclaimer

The Company offers the details of this vessel or yacht in good faith but cannot guarantee or warrant the accuracy of this information nor warrant the condition of the vessel. A buyer should instruct his representatives, agents, or his surveyors, to investigate such details as the buyer desires validated. This vessel or yacht is offered subject to prior sale, price change, or withdrawal without notice.

PHOTOS

2



3



4



5



6



7



8



9



10



11



12



13



14



15



16



17



18



19



20



21



22



23



24



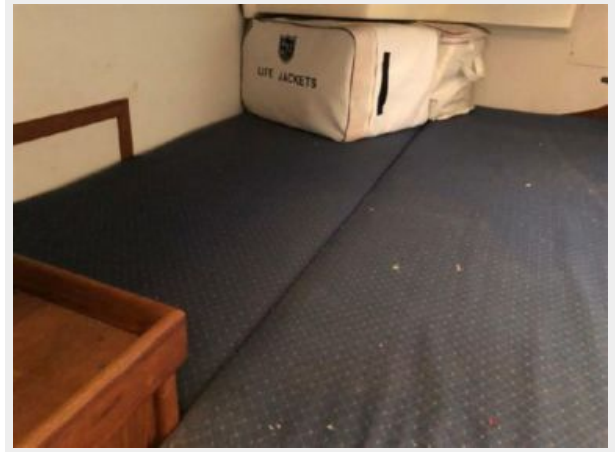
25



26



27



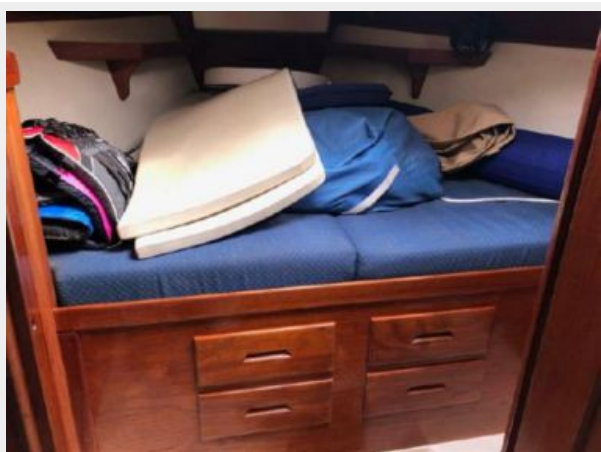
28



29



30



31



32



33



34



35



36



37



38



39



40



41



42



43



44



CONTACTS

Andrey Shestakov, leading yacht broker of the sales department of Shestakov Yacht Sales Inc. Shestakov Yacht Sales Inc., the official representative of the Miami/Fort Lauderdale FL headquarters.

Contact details

Email: andrey@shestakovyachtsales.com

Web: shestakovyachtsales.com/en/

Telephones

USA: +1(954)274-4435

Office hours

Monday – Saturday: **9:00 - 21:00** EDT

Sunday: **closed**

Address



Harbour Towne Marina, 850 NE 3rd St,
STE 213, Dania, FL 33004