

## 31 2017 HANSE 315 — HANSE



**Судостроитель:** HANSE

**Год постройки:** 2017

**Модель:** Крейсерская яхта

**Цена:** **ЦЕНА ЯХТЫ ПО ЗАПРОСУ**

**Местонахождение:** United States

**Длина общая:** 31' 0" (9.45m)

**Ширина:** 11' 0" (3.35m)

**Мин. осадка:** 4' 5" (1.35m)

**Крейс. скорость:** 6 Kts. (7 MPH)

**Макс. скорость:** 7 Kts. (8 MPH)

Купить 31 2017 Hanse 315 — HANSE а также выбрать подходящую вам яхту из нашего каталога яхт вам поможет опытный яхтенный брокер Андрей Шестаков. На сегодняшний день компания Shestakov Yacht Sales Inc. имеет большое количество яхт в собственном списке продаж, а также тесно сотрудничает со всеми крупными яхтенными производителями по всему миру.

Для того чтобы купить яхту 31 2017 Hanse 315 — HANSE а также проконсультироваться по любому вопросу связанному с покупкой, продажей, чартером яхт позвоните по телефону **+7(918)465-66-44**.

# ОГЛАВЛЕНИЕ

ОГЛАВЛЕНИЕ	2
ХАРАКТЕРИСТИКИ	5
Обзор	5
Основная информация	5
Размеры	6
Скорость, вместимость и масса	6
Размещение	6
Корпус и палуба	6
Информация о двигателе	6
ПОДРОБНОЕ ОПИСАНИЕ	7
Overview	7
Исключения	11
Отказ от ответственности	11
ФОТОГРАФИИ	12
2	12
3	12
4	12
5	12
6	12
7	12
8	13
9	13
10	13
11	13
12	13
13	13
14	14
15	14

16	14
17	14
18	14
19	14
20	15
21	15
22	15
23	15
24	15
25	15
26	16
27	16
28	16
29	16
30	16
31	16
32	17
33	17
34	17
35	17
36	17
37	17
38	18
39	18
40	18
41	18
42	18
43	18
44	19

---

45	19
46	19
47	19
48	19
49	19
50	20
51	20
<b>КОНТАКТЫ</b>	<b>21</b>
Контактная информация	21
Телефоны	21
Время работы	21
Адрес	21

# ХАРАКТЕРИСТИКИ

---

## Обзор

---

The Hanse 315 is the perfect mix of performance and style, perfect for weekend cruising. This one-owner boat was ordered with thoughtful upgrades from the Hanse factory with an upgraded engine, twin-helm cockpit layout with added upgrades including the upgraded B&G package with an autopilot, upgraded battery pack, in-mast furling main, additional opening hatches, teak trimmed cockpit, and many added exterior cruising comfort options. HIGHLIGHTS:

- 18hp Volvo D1-20 upgraded engine with 188 hours
- Dual helm cockpit layout with cockpit table and teak benches
- Upgraded ELVSTROM triradial-cut performance sails
- In-mast furling main sail and self-tacking headsail
- Upgraded battery package and 350w inverter
- Added opening ports
- Electric anchor windlass
- Custom bimini and dodger package
- Teak rub rail

### HANSE UPGRADE PACKAGES:

- B&G Navigation package with dual helm
- Anchoring package with electric windlass
- Comfort package with folding swim platform, custom lighting system
- Entertainment package with Bluetooth stereo system

## Основная информация

---

**Тип судна:** Крейсерская яхта

**Подкатегория:** Sloop

**Модельный год:** 2017

**Год постройки:** 2017

**Страна:** United States

## Размеры

---

**Длина общая:** 31' 0" (9.45m)

**Длина по ватерлинии:** 28' 7" (8.71m)

**Длина палубы:** 31' 7" (9.63m)

**Ширина:** 11' 0" (3.35m)

**Мин. осадка:** 4' 5" (1.35m)

**Трапы:** 47' 1" (14.35m)

**Длина привального бруса:** 31' 0" (9.45m)

## Скорость, вместимость и масса

---

**Крейс. скорость:** 6 Kts. (7 MPH)

**Макс. скорость:** 7 Kts. (8 MPH)

**Водоизмещение:** 11684 Pounds

**Вместимость воды:** 55 Gallons

**Объем топливного бака:** 26 Gallons

## Размещение

---

**Всего кают:** 2

**Всего коек:** 2

**Всего ком. состава:** 1

## Корпус и палуба

---

**Материал корпуса:** Fiberglass

## Информация о двигателе

---

**Двигатели:** 1

**Производитель:** Volvo Penta

**Модель:** D1-20

**Тип двигателя:** Inboard

**Тип топлива:** Diesel

# ПОДРОБНОЕ ОПИСАНИЕ

## Overview

### INTRODUCTION

The Hanse 315 is the perfect mix of performance and style, perfect for weekend cruising. This one-owner boat was ordered with thoughtful upgrades from the Hanse factory with an upgraded engine, twin-helm cockpit layout with added upgrades including the upgraded B&G package with an autopilot, upgraded battery pack, in-mast furling main, additional opening hatches, and many added exterior cruising comfort options. HIGHLIGHTS:

- 18hp Volvo D1-20 upgraded engine with 188 hours
- Dual helm cockpit layout with cockpit table and teak benches
- Upgraded ELVSTROM triradial-cut performance sails
- In-mast furling main sail and self-tacking headsail
- Upgraded battery package and 350w inverter
- Added opening ports
- Electric anchor windlass
- Custom bimini and dodger package
- Teak rub rail

### HANSE UPGRADE PACKAGES:

- B&G Navigation package with dual helm
- Anchoring package with electric windlass
- Comfort package with folding swim platform, custom lighting system
- Entertainment package with Bluetooth stereo system

### COCKPIT

This Hanse 315 features the upgraded dual helm layout with an optional cockpit table to help create a functional helm space that allows you to easily single-hand while also creating a great entertainment space. The additional fold-down swim platform really helps open up the space for boarding and for entertaining while on the hook. The split helm allows for better helm control from either side of the yacht while sailing and it also opens up the cockpit for easy walk-through space. The added B&G autopilot allows for easy single-handing.

- Upgraded dual helm layout
- Custom dodger and bimini with upgraded handle and plexiglass options
- Upgraded centerline cockpit table

- Teak benches
- Fold-down swim platform upgrade
- Upgraded winch package with cabintop and aft cockpit coaming secondaries
- B&G autopilot
- B&G sailing instruments
- Handheld remote for B&G VHF radio

## RIGGING AND SAILS

Hanse breaks the mold of the average production yacht with there attention to detail in sailing performance while also being extremely easy to handle. With the upgraded in-mast furling main, the self-tacking headsail system and the upgraded ELVSTROM tri-radial performance sails, you can simply set the sails once and you are good to go! Tacking involves simply turning the wheel or pushing the tack button on your autopilot. The end-boom main sheeting system allows for maximum control of the main sail. All of the rigging lines lead aft to the cockpit for easy single-handing.

- Upgraded ELVESTROM tri-radial cut performance sails
- Upgraded in-mast furling main sail
- End-boom mainsheet control for maximum performance
- Lewmar ST40 EVO primary winches
- Upgraded Lewmar ST40 secondary winches

## MAIN SALON

The comfortable main salon space down below offers the perfect spot to sit back and relax after a fun day of sailing or to sit down and enjoy a tasty evening meal. The open bow allows for awesome additional natural light and really opens up the salon space. A settee to starboard and port allows seating for four around the centerline drop-leaf table. The light upholstery and Acadia floors keep the space light and cheery.

- Port and starboard settees with cubby storage behind the back rests
- Rich Mahogany style Satin Varnish wood interior
- Overhead opening hatches
- Custom overhead lighting system with adjustable programs & accent lighting
- Personal reading lights on forward bulkhead
- Fixed side ports in cabintop
- Fusion stereo speakers
- Custom TV antenna cable run down from mast top to interior cabintop

## GALLEY

The Hanse 315 has a nice L-shaped galley to starboard with a dual-burner propane stove and oven, stainless steel sink, and isotherm top-loading refrigeration. The black corian countertops add a richness to the mahogany colors of the galley storage.



- Isotherm top loading refrigeration
- 2-burner gimbaled stove
- Stainless steel sink
- Mahogany storage cabinets
- Overhead LED lighting

**AFT CABIN**The spacious aft cabin lies athwartship aft of the galley to starboard. This spacious double berth is a light and cheery space on the boat thanks to ample fixed and opening ports. A large double door hanging locker is at the entrance to the cabin for easy access.

- Large double berth stretches across the stern
- 4" plush marine berth cushions
- Double hanging locker
- Personal reading lights
- Overhead opening port and opening side port for ventilation

#### SYSTEMSMECHANICAL:

- Upgraded 18hp Volvo D1-20 Sail drive motor with 188 hours
- Alfa throttle control at starboard helm with volvo penta engine panel
- Easy access to engine from all four sides of engine compartment
- 40amp alternator
- 2-blade folding prop

#### ELECTRICAL:

- 350w inverter
- Upgraded 250Ah battery bank
- 30amp battery charger
- 12v and 120v electric panel at nav station

#### PLUMBING:

- Water heater
- Automatic bilge pump
- Jabsco manual marine head
- Emergency whaler manual bilge pump in cockpit

**DAVE AND ERIN'S RATING**When we travel with clients FAR out of town for yachts, we don't like surprises when we get there. It's embarrassing for us and can make for an expensive trip. With that in mind, we'd like to share our rating of various systems on the boat so you'll be as informed as possible before you come for a visit. Our rating system is on a 1-10 scale with 10 being 'near perfect' (in OUR opinion). Please view this list as a GUIDE only. Everyone's idea of good and bad can vary quite a bit and everyone brings a different expectation to the yacht shopping process. Our goal in doing this is to help you reach a comfort level with the boat before you invest time and energy to come and see it. We'll summarize by saying that this appears to be

an excellent yacht worthy of serious consideration. Beyond telling you what's great about a yacht, don't you also want to know what it needs next? Every yacht, no matter how seemingly turn-key, needs something. Every owner has next year's list of 'to-do's, right? We'll also include in this section what Erin and I think the boat could use to take her from nearly perfect to 'voyage-ready' for your next adventure. Overall Rating: 9.5/10 Yes, really. We are privileged to be able to pick and choose the yachts we list. Often, they're 'nice' but not 'great.' This yacht is 'awesome' and has seen Yeah, yeah, we sound like salesmen (which we are). That said, this yacht is in superb condition. Open-checkbook owner. Erin and I spec'd this boat for this owner when he bought it new. He said 'yes' to nearly every option you can get. He has sailed the boat lightly here on the middle Chesapeake but just doesn't have the time for the boat he had hoped to have. The overall layout of the boat, both above and below decks, is really well configured for comfortable cruising. The owner's berth is low and centerline up forward and completely open to the main salon which, on a 31' boat, helps make the interior feel super spacious. The head is large. The salon works great, especially with the retractable salon table, and the galley has plenty of counter space. We looked hard for blemishes and can't find any of note so far. Everywhere we looked, whether bilges, storage spaces, or engine room, we're very impressed. Exterior: 9.5/10 Hanse has been a pioneer of modern cockpit design. EVERYTHING you need to manage the boat underway is right at your fingertips at either of the twin helm stations. The two wheels and tons of beam at the stern really help the space open up. You can safely navigate around the decks while heeled with plenty of things to grab as you head forward. One of the reasons the Hanse rig is so stiff and the boat goes to windward so well is that the spreaders are wide and the shrouds come down to straps incorporated into the hull-sides. Hull is shiny, decks are clean, rig looks good. The sails are the performance FCL tri-radial cut variety from Elvstrom. Superb shape and stiffness, a worth upgrade for the boat. Exterior canvas all in excellent shape and new soon after owner took delivery of the boat new. Owner went all out on ever option for dodger, bimini and accessories for a sum of around \$15K. The drop-down boat-width swim transom is common throughout the Hanse line and really offers a superb connection to the water. Interior: 9.5/10 An inviting and open main salon seats several people and includes the chef's galley and nav area. The owner selected the 'open layout' plan which reduces the size of the forward bulkhead keeping the forward cabin open to the main salon. On a 31' of boat, this really enhances the feeling of spaciousness below. Upholstery has been covered by the owner and is clean and looks really good. Large opening hatches and huge side fixed windows provide great ventilation and good natural lighting throughout the boat. The aft cabin, because of so much beam carried aft in the hull, is huge for a yacht this size. The electronic lighting package with dimmers offers direct, indirect, and point-task lighting throughout the boat. This is more sophisticated and luxurious than what you see on most yachts of this size and at this price point. Hardware is high quality. Doors are nice and thick. Joinery is impressive. Electronics/Electrical Systems: 9.5/10 The electronics on this boat are high quality and cover all the bases for voyaging. We have everything but radar. Nice big chart plotter, autopilot, depth, wind, speed and VHF radio are all well situated for the helmsman. If you're going to operate at night, consider adding the 24NM B&G radar dome for about \$1500. Engine Room: 10/10 (visual inspection only) Mounted well below the steps and almost horizontal (due to sail drive configuration), the engine is easily accessed and serviced. Engine has been well maintained and has very low use with 187.8 hours since new. This owner is a true sailor and uses the engine only when necessary. See the

photos. This is the upgraded 18HP engine over the standard 14HP model, a \$2,000 upgrade. That's tons of power to move this boat near 7 knots with ease under power. Galley/Head Systems: 9.5/10 Great counter space. High quality appliances. Good amount of fridge and space. The chef does not impede traffic flow through the boat. The head is more like a bathroom with lots of space, and enough space for showering. Owner upgraded the head system to include a macerator for pump outs. Rig & Sails: 10.0/10 Sails in awesome condition and upgraded to FCL performance sail cloth from Elvstrom. Regularly maintained, no repairs have been needed, the sails look really good. They are removed each season, examined/serviced at a loft and stored indoors for several months each year. The rig is original and inspected regularly. The rig is completely managed from the cockpit so single-handed sailing is a breeze, all from BEHIND the twin wheels – no one in the cockpit forward of the wheels needs participate in handling the boat. The self-tacking headsail makes beating upwind SO simple! Just set the main and jib as you like and tack your way upwind. No winches to grind or lines to handle in the cockpit. It's like driving a car up a winding road. A turn of the wheel is all you need. This is really the future of sailing rig design that all yacht manufacturers are adopting. Hanse was among the first. ELECTRONICS

- B&G V7 chart plotter at starboard helm
- B&G autopilot control at starboard helm
- (2) B&G multifunction displays at port helm
- Fusion stereo at nav with cockpit and interior speakers
- B&G V50 VHF radio at nav station

---

## Исключения

При продаже яхты исключаются личные вещи владельца.

---

## Отказ от ответственности

Компания предоставляет описание судна или яхты добросовестно, но не может гарантировать точность этой информации, а также не ручается за техническое состояние. Покупатель должен проинструктировать своих агентов или оценщиков исследовать представленную информацию более подробно, по собственному желанию. Продажа судна или яхты, изменение цены или снятие с продажи будет происходить без предварительного уведомления.

# ФОТОГРАФИИ

2



3



4



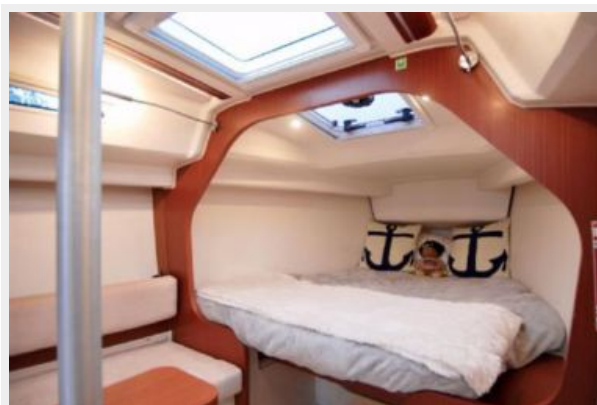
5



6



7



8



9



10



11



12



13



14



15



16



17



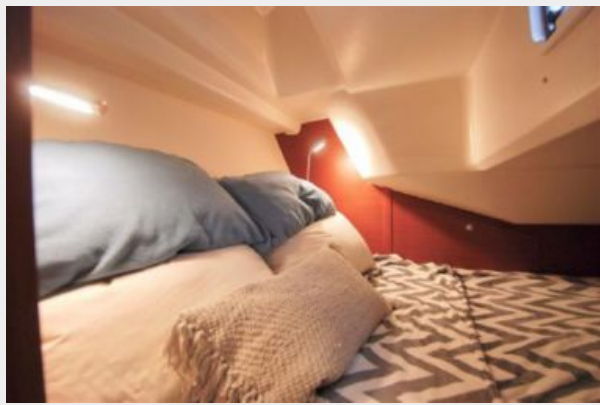
18



19



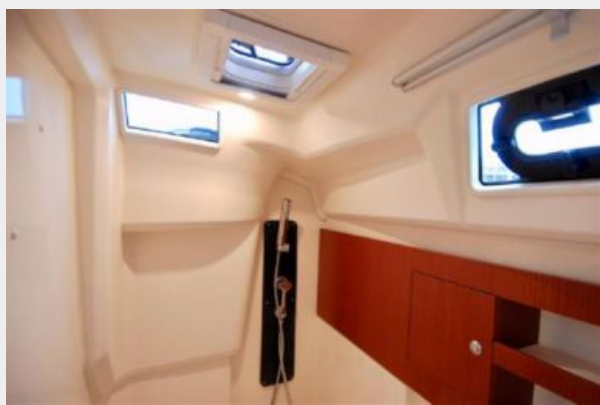
20



21



22



23



24



25



26



27



28



29



30



31





32



33



34



35



36



37



38



39



40



41



42



43



44



45



46



47



48



49



50



51



# КОНТАКТЫ

---

Андрей Шестаков (Andrey Shestakov) – ведущий яхтенный брокер отдела продаж яхт и судов компании Shestakov Yacht Sales Inc. Официальный представитель Shestakov Yacht Sales Inc. для русскоговорящих клиентов в центральном офисе компании в Майами/Форт Лодердейл/Флорида/США.

## Контактная информация

---

Email: [andrey@shestakovyachtsales.com](mailto:andrey@shestakovyachtsales.com)

Web: [shestakovyachtsales.com](http://shestakovyachtsales.com)

## Телефоны

---

Краснодарский край: **+7(918)465-66-44**

США, Майами, Флорида: **+1(954)274-4435**

## Время работы

---

Понедельник – Суббота: **9:00 - 21:00**  
EDT

Воскресенье: **Закрито**

## Адрес

---



Harbour Towne Marina, 850 NE 3rd St,  
STE 213, Dania, FL 33004