

2017 AZIMUT 54 FLYBRIDGE THE AMIE DEE — AZIMUT



Судостроитель: [AZIMUT](#)

Год постройки: 2017

Модель: Крейсер

Цена: ЦЕНА ЯХТЫ ПО ЗАПРОСУ

Местонахождение: United States

Длина общая: 54' 0" (16.46m)

Ширина: 16' 3" (4.95m)

Мин. осадка: 3' 3" (0.99m)

Крейс. скорость: 27 Kts. (31 MPH)

Макс. скорость: 32 Kts. (37 MPH)

Купить 2017 Azimut 54 Flybridge The Amie Dee — AZIMUT а также выбрать подходящую вам яхту из нашего каталога яхт вам поможет опытный яхтенный брокер Андрей Шестаков. На сегодняшний день компания Shestakov Yacht Sales Inc. имеет большое количество яхт в собственном списке продаж, а также тесно сотрудничает со всеми крупными яхтенными производителями по всему миру.

Для того чтобы купить яхту 2017 Azimut 54 Flybridge The Amie Dee — AZIMUT а также проконсультироваться по любому вопросу связанному с покупкой, продажей, чартером яхт позвоните по телефону **+7(918)465-66-44**.

ОГЛАВЛЕНИЕ

ОГЛАВЛЕНИЕ	2
ХАРАКТЕРИСТИКИ	3
Основная информация	3
Размеры	3
Скорость, вместимость и масса	3
Размещение	3
Корпус и палуба	3
Информация о двигателе	4
ПОДРОБНОЕ ОПИСАНИЕ	5
Options	5
Exterior Features	5
Interior Accomodations	6
Systems	7
Исключения	7
Отказ от ответственности	8
ФОТОГРАФИИ	9
КОНТАКТЫ	13
Контактная информация	13
Телефоны	13
Время работы	13
Адрес	13

ХАРАКТЕРИСТИКИ

Основная информация

Тип судна: Крейсер

Модельный год: 2017

Год постройки: 2017

Страна: United States

Размеры

Длина общая: 54' 0" (16.46m)

Ширина: 16' 3" (4.95m)

Мин. осадка: 3' 3" (0.99m)

Скорость, вместимость и масса

Крейс. скорость: 27 Kts. (31 MPH)

Макс. скорость: 32 Kts. (37 MPH)

Водоизмещение: 59524.81074 Pounds

Чистый вес: 27 Pounds

Вместимость воды: 155 Gallons

Вместимость сточного бака: 92 Gallons

Объем топливного бака: 618 Gallons

Размещение

Всего кают: 3

Корпус и палуба

Материал корпуса: Fiberglass

Информация о двигателе

Двигатели: 2

Производитель: Volvo

Модель: D11

Тип двигателя: Inboard

Тип топлива: Diesel

ПОДРОБНОЕ ОПИСАНИЕ

Options

****BUILT TO U.S. SPECIFICATIONS****

Additional Seakeeper cntrl station on fly
 Barbecue on fly bridge
 Oskar cockpit chair (each)
 Cockpit table
 Crew Cabin with Air Conditioning
 Deluxe salon door curtain sliding on rails
 Floating Line (4" high - black)
 Glendenning cable master
 Hi-lo system for TV (TV not included)
 Icemaker in salon
 Mosquito nets for portholes
 Raymarine Platinum Package
 Refrigerator in cockpit
 Refrigerator on flybridge
 Safe in master cabin
 Salon Pouf w/table
 Seakeeper Stabilizer
 Set of linen (crew cabin excluded)
 Set of linen - crew cabin
 Set of linen - Sofa /Bed in salon
 Sunbathing cushions on aft flybridge w/ GRP
 Sunbathing cushions on bow
 Teak on flybridge deck
 Teak on side decks
 Two floodlights installed on aft flybridge
 Washer-dryer combo unit
 Wooden floor in salon & dinette & helm station
 Furniture in Zebrano prex
ADVANCED PACK:
 Double Racor filters for main engines
 Easy Docking maneuvering joystick for engine and thrusters (Xenta)
 Electric mooring winches in cockpit
 Add'l searchlight control at lower helm
 Chaincounter control at main helm
 Openable scenic windows in VIP cabin
 Spare conduits connecting engine room/wheelhouse/radar arch
 Water maker predisposition
 Miele appliances (microwave combo and cooktop)
 Soft Top (non foldable)
 C-shape sofa bed in salon
 Organized add'l storage in fwd port side
 Helm area ILO skylight
 Dimmered lights in salon and master cabin
 Decor Upgrading

Exterior Features

COCKPIT
 Cockpit access via stainless steel and plexiglas gate
 Aft stainless steel left/right chock
 Vertical double door in stainless steel and tempered glass
 4-seater C-shaped cockpit bench in GRP, integrated in deck
 Cockpit bench cushion
 1 locker in the port deckhouse column

Engine room access via door in cockpit floor
 Teak floor (excluding side walkway access steps)
 Curved handrail on stern platform
 Handrail on flybridge access stairs
 Handles on the cockpit bench armrests

Lighting: spotlights in cockpit ceiling panel.
 Shower head with hot and cold water.
PLATFORM
 Stern platform lights
 Teak floor
 Stainless steel telescopic swimming platform (4 steps)
 Flybridge
 Ladder from cockpit, port side
 Teak decking
 Access door: water tight in aluminum and plexiglass
 Bow Sundeck
 "L" shaped sofa joining with the sundeck
 Teak table with central stainless steel leg
 1 bow locker (in front of instrument board)
 Garbage bin in fly cabinet
 Washbasin (cold water)
 Manual spotlight
 Stainless steel light mast
 The wheelhouse includes:
 Main engine instruments (thermometer, rev counter)
 Alarm indicator lights
 Engine start up controls
 Bow anchor winch controls
 Horn control
 Trim tab control
 Bow thruster control
 Adjustable spot activation
 12V socket
 Chain meter counter

Interior Accommodations

SALON AND DINETTE Bargeboards and window frames in matte fiberglass 1 "C" shaped sofa for 4-6 people on the port side of the salon-standard smooth fabric covering Rectangular table in dinette for 6 people. The central part of the top can be removed and stored in the compartment below the aft sofa cushions. TV system with aerial, sockets in salon and owner's cabin. Below deck accommodation ladder with carpeted steps ceiling and wall upholstery: 2 tone fabric Roman blinds for windows and privacy curtain for salon door GALLEY Oak flooring Silestone blanco city worktop Glass ceramic range with 3 aligned plates and pan holder Hood installed in the wall unit above the range, with active carbon filters (recirculation) Microwave Oven + Grill Sink Fridge + upright freezer Electric window CORRIDOR Below deck access corridor with carpeted floor Courtesy lighting Corridor grabrails Helm Electric helm seat with 2 places (reversible seat for use with dinette too) adjustable seat and sprung backrest Electric window Adjustable steering wheel The wheelhouse includes: Bow thruster controls Electronic remote controls Trim tab switches Trim tab indicators Bow anchor winch activation Horn, navigation lights, wiper switches Activation of bilge pumps Side window opening Emptying of black and gray water tanks Engine room ventilation Cigarette lighter socket Shore power socket indicator light Chain washing pump switch Fuel, gray water, fresh water tank level gauge Engine start-up Rev counter 1 engine data display Ammeters Alarm indicator lights Owners Cabin and Head Located Midship Diagonal double bed with headboard on starboard side with storage space below Dinette 2 wall units Drawer unit with 1 drawer 2 wardrobes with hanger bars 1 wardrobe with shelves Shelf around the bed Spotlights and lighting strips on ceiling 2 openable portholes (rectangular portholes inserted in the window) 3 + 3 rectangular hull windows Hatchway: emergency exit from ceiling panel above the bed Direct access to the head from the corridor leading to the owner's cabin with internal stairs Mirror in the stern wardrobe Venetian blinds on the windows Fabric wall upholstery and oak wood paneling Fabric ceiling panels TV system in owner's cabin Owners Head Located prior to the owner's cabin on the port side (under galley). Access from owner's cabin (via ladder) Oak top and oval washbasin cognac - Vetro Freddo TECMA toilet Chromed mixer tap Separate shower enclosure; flat shower door Shower column and seat in matte ABS Wall unit with 2 sliding panels above washbasin Ivory-colored ceiling panels VIP Cabin and Head Located in the bow Fixed double bed Fixed oak headboard 2 wall units above the windows 1 wardrobe with hanger bar and shelves on the starboard stern wall 1 wardrobe with hanger bar on port stern wall Shelves on bulwark (bed side) 2 under-bed lockers 2 wall lights on headboard Spotlights on ceiling Direct access to guest head Carpeted floor Windows Hatchway Wooden Venetian blind Fabric bulwark upholstery Ceiling panels: oak portal, matte ivory GRP ceiling panel with fabric panels above the bed VIP Head Positioned abaft of the VIP cabin on the port side Direct access from the VIP cabin or from the corridor TECMA toilet Oak top and oval washbasin cognac (brown) Vetro Freddo Chromed mixer tap 3-door round shower, not separated Shower column in matte ABS Wall unit with 2 sliding panels above washbasin Lighting: ceiling light on wall unit, and spotlights in the shower 1 openable round porthole with wooden Venetian blind Floor in oak, with grating in solid wood Natural air extraction Air conditioning delivery from VIP cabin Guest Cabin Located on starboard side 2 single beds, fixed Headboard with oak panels 1 central nightstand between the beds (with openable compartment) 1 wardrobe with hanger bar and shelves 3 under bed lockers Ceiling panels: oak

portal and ivory GRP ceiling panel with fabric panels Fabric wall upholstery (with oak and fabric paneling) 1 openable round porthole Wooden Venetian blind Flooring: carpet Lighting: spotlights 2 wall lights on headboard

Systems

Electrical System Shore-powered power supply Onboard voltages: 120V-60Hz AC 24V DC 12V DC The main panels are installed in the wheelhouse, above the galley fridge, in the engine room, and in the crew cabin The power circuit breakers protecting all the 24V utilities are in the wheelhouse In the galley (above the fridge) there are other power circuit breakers that protect the various 220V AC utilities, as well as the 220V AC shore or generator source selectors; the 220V power circuit breakers for the air conditioning system are also located here On the main panels in the engine room and crew cabin you will also find additional power circuit breakers for the various 24V DC utilities 2 connected tanks of 1170 l each (total capacity 2340 l), in aluminium Electronic gauge in wheelhouse (port tank) Optical gauge on tank (starboard tank) 2 single filters (decanters) for engines + 1 filter for generator 2 inlets on walkway 2 vents on bulwark Remote diesel shut-off via 24V solenoid valve Fuel drawing tap on port tank Fresh water system A 590-liter polyethylene tank below the cabin descent ladder (access area) (aft tank). With aluminium frame and GRP cradle Water filling on starboard side walkway Level sensor with electronic gage in wheelhouse 1 tank discharge on the bulwark Water pressure pump in engine room 60-liter water heater in engine room, above the air-conditioning compressor Suitable for water supply connection direct to pier Hot/cold water pipe: heads, galley, swimming platform shower head, Cold water only in flybridge washbasin; Cold water only in engine room. Fresh water toilet flushing System that can be divided by ACORN manifolds Black water system 175-liter polyethylene tank below the VIP cabin (fore tank) Level sensor (2 levels) 1 tank discharge on bulwark with anti-odor filter 1 FEIT PVM 0.2 macerator pump Intake from deck walkway Tecma toilet (with macerator pump). All the toilets discharge into a tank. Sea outlet from tank (manual only) Gray water system 175 l polyethylene tank located under accommodation corridor (central tank) Gray water outlets directly into the sea from bulwark raisers Level sensor (2 levels) with alarm indicator in wheelhouse Water discharge: from tank (automatic / manual) Diaphragm pump Fancoil condensation discharge into collection tank Seawater system Engine cooling system: 2 dynamic sea-water intakes 2.5" with filter and valves Generator cooling system: submerged outlet: 1 dynamic 1" seawater intake with filter and valve Air conditioning cooling system: submerged outlet: 1 dynamic 1" seawater intake with filter and valve Chain wash pump: seawater Engine gas exhaust system Gas exhaust system: immersed by-pass Insulated stainless steel raisers Exhaust pipes: structural muffler in GRP Water/fumes separator for generator, with side exhaust Engine room (other) Access from door in cockpit floor Battery housing: 1 set on stern bulkhead, on frame above water heater; 1 set in crew cabin, behind headboard wall Sound-proofing

Исключения

При продаже яхты исключаются личные вещи владельца.

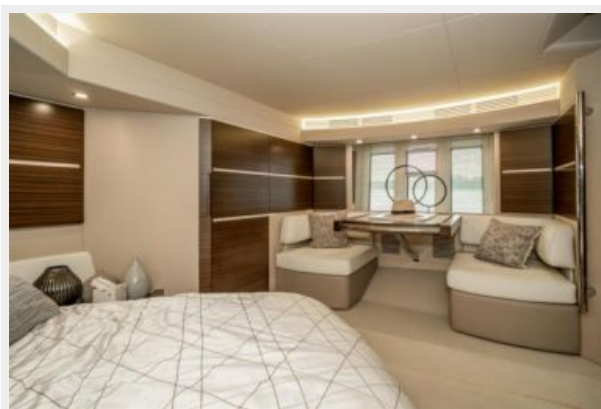
Отказ от ответственности

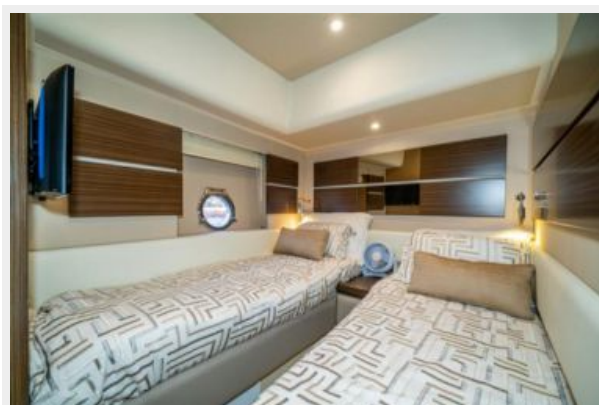
Компания предоставляет описание судна или яхты добросовестно, но не может гарантировать точность этой информации, а также не ручается за техническое состояние. Покупатель должен проинструктировать своих агентов или оценщиков исследовать представленную информацию более подробно, по собственному желанию. Продажа судна или яхты, изменение цены или снятие с продажи будет происходить без предварительного уведомления.

ФОТОГРАФИИ









КОНТАКТЫ

Андрей Шестаков (Andrey Shestakov) – ведущий яхтенный брокер отдела продаж яхт и судов компании Shestakov Yacht Sales Inc. Официальный представитель Shestakov Yacht Sales Inc. для русскоговорящих клиентов в центральном офисе компании в Майами/Форт Лодердейл/Флорида/США.

Контактная информация

Email: andrey@shestakovyachtsales.com

Web: shestakovyachtsales.com

Телефоны

Краснодарский край: **+7(918)465-66-44**

США, Майами, Флорида: **+1(954)274-4435**

Время работы

Понедельник – Суббота: **9:00 - 21:00**
EDT

Воскресенье: **Закрито**

Адрес



Harbour Towne Marina, 850 NE 3rd St,
STE 213, Dania, FL 33004