

AT LAST — HEESEN YACHTS



Судостроитель: [HEESEN YACHTS](#)

Год постройки: 1990

Модель: Моторная яхта

Цена: ЦЕНА ЯХТЫ ПО ЗАПРОСУ

Местонахождение: United States

Длина общая: 144' 0" (43.89m)

Ширина: 27' 2" (8.28m)

Мин. осадка: 5' 0" (1.52m)

Макс. осадка: 6' 0" (1.83m)

Крейс. скорость: 13 Kts. (15 MPH)

Макс. скорость: 17 Kts. (20 MPH)

Купить **AT LAST — HEESEN YACHTS** а также выбрать подходящую вам яхту из нашего каталога яхт вам поможет опытный яхтенный брокер Андрей Шестаков. На сегодняшний день компания **Shestakov Yacht Sales Inc.** имеет большое количество яхт в собственном списке продаж, а также тесно сотрудничает со всеми крупными яхтенными производителями по всему миру.

Для того чтобы купить яхту **AT LAST — HEESEN YACHTS** а также проконсультироваться по любому вопросу связанному с покупкой, продажей, чартером яхт позвоните по телефону **+7(918)465-66-44**.

ОГЛАВЛЕНИЕ

ОГЛАВЛЕНИЕ	2
ХАРАКТЕРИСТИКИ	5
Обзор	5
Основная информация	5
Размеры	5
Скорость, вместимость и масса	6
Размещение	6
Корпус и палуба	6
Информация о двигателе	6
ПОДРОБНОЕ ОПИСАНИЕ	7
Overview	7
Refit Comments	7
Helm Area / Upper Salon	8
Top Sun Deck	8
Deck Equipment	8
Main Level Salon	9
Galley and Equipment	9
Master Stateroom	10
Master Head	10
VIP Forward to Port	10
VIP Head	11
Forward Guest Stateroom Starboard	11
Forward Guest Head	11
(2) Large Guest Staterooms Aft	12
Guest Heads	12
Laundry Room / Downstairs Foyer	12
Communication, Navigation, and Entertainment Systems	12
Wheelhouse / Captain's Quarters	13

Crew	13
Mechanical	14
Security, Firefighting and Safety Equipment	14
Dimensions / Capacities	15
Exclusions	15
Исключения	16
Отказ от ответственности	16
ФОТОГРАФИИ	17
7396457_20200313083959427_1_XLARGE	17
7396457_20200401144428448_1_XLARGE	17
7396457_20200313083958966_1_XLARGE	17
7396457_20200330130113661_1_XLARGE	17
7396457_20200330130118458_1_XLARGE	18
7396457_20200401144431184_1_XLARGE	18
7396457_20200330130120836_1_XLARGE	18
7396457_20200401144430554_1_XLARGE	18
7396457_20200330130122949_1_XLARGE	18
7396457_20200330130125068_1_XLARGE	18
7396457_20200330130115953_1_XLARGE	19
7396457_20200330131107194_1_XLARGE	19
7396457_20200330131109273_1_XLARGE	19
7396457_20200330131111622_1_XLARGE	19
7396457_20200330131119225_1_XLARGE	19
7396457_20200330131114331_1_XLARGE	19
7396457_20200330131116970_1_XLARGE	20
7396457_20200401144431724_1_XLARGE	20
7396457_20200401144423632_1_XLARGE	20
7396457_20200401144432252_1_XLARGE	20
7396457_20200401144434606_1_XLARGE	20

КОНТАКТЫ	21
Контактная информация	21
Телефоны	21
Время работы	21
Адрес	21

ХАРАКТЕРИСТИКИ

Обзор

- Absolutely stunning interior refit in 2014 by international designer Tui Pranich
- Further interior upgrades done by new owner in 2017 including beautifully designed updated interior and many soft goods
- Semi-displacement hull with waterjet propulsion results in a draft allowing her to cruise and anchor in destinations not often seen in yachts of her size
- Accommodations for 11 guests in a luxurious full-beam master stateroom and four stunning lower staterooms
- Year ABS Classification Survey passed Sept 2019 with Bureau Veritas certification
- Tender, waverunners, and other toys stored on main deck aft, keeping the bridge deck aft and sun deck completely open for full use by guests
- Fabulous open and spacious sundeck with Jacuzzi, full-beam sunpad, bar, grill, and cozy dining table
- Outstanding platform for charter with enviable charter history over the past several years
- Audio gauging performed Sept 2019 showing hull plating in good order
- 2 x MTU 12V4000 engines installed in 2009
- 3500 hours on MTU's

Основная информация

Тип судна: Моторная яхта

Модельный год: 1990

Год постройки: 1990

Страна: United States

Размеры

Длина общая: 144' 0" (43.89m)

Ширина: 27' 2" (8.28m)

Мин. осадка: 5' 0" (1.52m)

Макс. осадка: 6' 0" (1.83m)

Скорость, вместимость и масса

Крейс. скорость: 13 Kts. (15 MPH)

Дальность на крейсерской скорости:
1500

Макс. скорость: 17 Kts. (20 MPH)

Дальность на макс. скорости: 2000 Kts.

Вместимость воды: 4000 Gallons

Объем топливного бака: 19400 Gallons

Размещение

Всего кают: 5

Всего коек: 7

Всего ком. состава: 5

Каюта капитана: Да

Каюты экипажа: 3

Комм. состав экипажа: 3

Корпус и палуба

Материал корпуса: Aluminum

Информация о двигателе

Двигатели: 2

Производитель: MTU

Модель: 12V4000

Тип двигателя: Inboard

Тип топлива: Diesel

ПОДРОБНОЕ ОПИСАНИЕ

Overview

AT LAST offers an inspired level of elegance and comfort. Exquisite in every detail, AT LAST personifies absolute luxury. Her contemporary interior by designer Tui Pranich is expansive, creating a bright and relaxed atmosphere on board.

AT LAST offers an inspired level of elegance and comfort. Exquisite in every detail, AT LAST personifies absolute luxury. Her contemporary interior by designer Tui Pranich is expansive, creating a bright and relaxed atmosphere on board.

The excellent layout of AT LAST allows for all toy and tender storage to be located on the main deck aft, alleviating noise and disturbance when launching and retrieving. With no large cranes on the bridge deck aft or sundeck, AT LAST's sundeck is the perfect place to spend time uninterrupted. She features a large Jacuzzi aft with comfortable pad surrounding it for guests to enjoy, as well as a massive full-beam sunpad forward with large umbrellas for shade to sit back and relax. Additional amenities include a large bar with seating, barbeque grill, and bench seat with smaller dining table.

Powered by MTU engines, installed in 2009 and propelled by Kamewa waterjets, AT LAST has an incredibly shallow draft for a yacht of her size. Which make anchoring in private and pristine destinations in The Bahamas and other shallower destinations around the world is a breeze. AT LAST was named the number one charter boat in 2015 by Boat International Magazine; she is fully capable of producing annual charter revenues in-excess of one million dollars.

Refit Comments

- AT LAST has undergone numerous refits since her launch in 1990. In 2009 she underwent a major interior and engine room refit which saw the installation of new MTU 12V4000 engines.
- In 2014, she underwent a complete interior refit by international designer Tui Pranich. Additionally, A/V was upgraded, new wifi module installed, and her electrical was upgraded, among other things. The soft goods were replaced in the pilothouse and sky lounge, and new carpeting and exterior cushions were replaced on the bridge deck and Portuguese bridge.
- In 2017 more upgrades and changes were made by the current owner including beautiful interior design updates and many of the soft goods replaced.

Helm Area / Upper Salon

- Starting aft is a large covered deck area with dining table and 8 chairs along with 2 cocktail tables, and 4 additional chairs
- Inside is a spacious sitting area with 2 large couches to starboard and 2 barrel chairs.
- Portside is a bar area with 4 bar stools. Lots of natural lighting on both sides with a door on the port side leading to the walkway that goes forward to a seating area in front of the helm that leads down to the bow
- Wet Bar
- Ice Maker
- Refrigerator
- A/C Controls Lights w/Dimmers
- 8 Cabinet Drawers
- Pop-up TV
- Wall-to-wall carpeting
- Granite bar top
- Day Head
- Internal spiral staircase

Top Sun Deck

- Starting from the back are (2) sun pads on each side of the jacuzzi
- Forward is a large archway covering part of the deck. A nice table with bench seating to starboard
- Port side there is a nice bar with (4) stools
- 5-burner gas grill
- Ice machine with large u-line refrigerator
- Wet bar with storage underneath as well as bar storage Granite tops all the way around finish it off beautifully.
- Forward is a large open space which can be used as a dance floor among many other uses
- All the way forward is a large sunbed with (2) canopy umbrellas and (3) chairs with cushions for extra seating

Deck Equipment

- Anchor Windlass: Steen windlass anchor system with single motor and double drum
- Anchor Chain: (2) 450' anchor chain and rode
- Deck Capstans: (2) Port and starboard aft deck
- Underwater lights: (6) 4 below the transom, 1 port aft, 1 starboard aft
- Crane & Davits: Fwd and aft davit: SWL 2100 lbs
- Passarelle: Marquipt, 9-step
- Boarding stairs: Yes, custom, 3-step

- Swim ladder: Custom stainless
- Showers: (1) Rain-shower, swim platform
- Wind screens: (2) Port and starboard bridge deck aft sections
- TV: Bridge deck aft encased and on a swivel

Main Level Salon

- Large pantry/seating area aft with seating for 11 with a large coffee table
- Pop-up TV with surround-sound
- 8 large windows and 3 doors give easy access to outside decks and lots of natural lighting throughout
- Wall-to-wall carpeting
- Day head forward to starboard.

Moving forward is a spiral staircase giving access to the 4 staterooms below and the large upper-deck salon:

- In front is a large dining table with 10 chairs
- Starboard has floor-to-ceiling storage as well as glass cabinets both port and starboard for all serving dishes, flatware and stemware storage
- Port side access to galley area and moving forward on starboard side is a hallway leading to on-deck Master Stateroom.

Galley and Equipment

Main Galley Equipment:

- Wolf glass stovetop
- Viking oven
- Viking microwave
- (2) Hatco heat lamps
- Grill (sundeck)

Refrigeration & Freezer:

- (1) Sub-Zero Refrigerator and Freezer
- (2) True Fridges
- (1) Marvel Refrigerator
- U-line Icemaker
- Akso dishwasher
- (2) GE Trash compactors

Master Stateroom

On-deck Master Stateroom makes for easy access, with hallway down to starboard side that leads into a full-beam spacious Master Stateroom with king-size bed. 10 windows at eye-level give a spectacular view while cruising, along with plenty of natural lighting. There are 2 walk-in closets, with 30 drawers and cabinets for plenty of storage along with a desk/vanity make-up area.

- Wall to-wall carpeting
- A/C controls and light dimmers
- Drop-down shades
- TV with surround-sound
- 2 side reading lights
- Built-in sofa
- Under-bed storage

Master Head

Walking into a very large head area with double sinks featuring a granite vanity top, marble floors and large walk-in shower with jets and rain shower head in ceiling. Features a Jacuzzi tub with 4 jets. Private toilet area.

- 4 sconce lights
- Make-up vanity area
- 18 drawers/cabinet
- Full closet storage
- Custom build-out around Jacuzzi tub with additional storage

VIP Forward to Port

- Large VIP Stateroom with a king bed
- 3 large portholes giving natural light.
- Custom built-in TV and cabinets
- Separate desk area with chair and mirrored wall
- TV with surround-sound
- Wall-to-wall carpeting
- A/C controls at lights with dimmers
- 18 drawer cabinet
- Large hanging closet
- 2 reading lamps

- Under-bed storage
- Roll-down shades

VIP Head

- Large walk-in head with a stall shower
- Single vanity sink with granite top
- Custom built-in mirrored medicine cabinet
- Port hole window giving a lot of natural light
- Vanity area for makeup
- 3 sconce lights
- Pull-down shades
- Private toilet room
- Tall utility closet

Forward Guest Stateroom Starboard

Forward to starboard side you enter a very nice twin bed setup with a pullman berth on the inside wall. There are 2 large port holes that give a lot of natural light.

- Wall-to-wall carpeting
- A/C controls at light dimmers
- TV with surround-sound
- 7 drawer cabinet
- 3 large hanging closets
- Desk and sitting area with stool
- Pull down shades
- 2 side drawers
- Under-bed storage

Forward Guest Head

- Large walk-in head with a single sink
- Stone counter tops.
- Jacuzzi tub with 4 jets and port hole window give a lot of natural light.
- 3 cabinets
- Stone flooring
- Large mirror over sink
- Pull down shades

(2) Large Guest Staterooms Aft

2 identical Staterooms midship with queen beds in each. 2 large porthole windows give a lot of natural light. On the inside wall there is a desk/vanity sitting area with a large mirror.

- Wall-to-wall carpeting
- A/C controls at light dimmer switches
- TV with surround-sound
- Roll-down shades
- 7 drawers and large hanging closets

Guest Heads

- Large private head with a single sink and stone top vanity. Large mirror and walk-in shower with built in seat.
- Stone flooring and custom wall treatments
- 7 drawers for storage
- Large floor-to-ceiling cabinet
- Port hole window for light

Laundry Room / Downstairs Foyer

Large laundry service room:

- Dual washers and dryers
- Side room with sub-zero freezer
- Wet bar sink with 12 cabinets for storage
- 2 LG Washing Machines
- 2 Miele Dryers
- Wine cooler
- Ironing board
- Subzero refrigerator and freezer

Foyer Downstairs:

- Coffee station
- (2) drawer style refrigerators
- Custom storage area port side with built-in 150 bottle wine storage and custom shelving for additional storage

Communication, Navigation, and Entertainment Systems

Communication Systems:

- Telephone System: Panasonic KX T61610, 1 line for VOIP, cell, and land, 16 extensions
- GMDSS: Furuno FS-5000 radiotelephone Furuno FM-8500 GMDSS
- VHF Satcom: V-SAT, VOIP (upgraded 2014) New Wifi throughout the vessel on all decks
- New Pepwave cell system

Navigation Systems:

- Radar: (2) Furuno 120-mile radar w/ARPA
- Compass: Sestrel magnetic compass
- Automatic Pilot: Sperry Marine Navipilot AD11
- GPS: Northstar 6100 Furuno GP32
- Navtex: Furuno NX500
- Depth Sounder: (1) Furuno RD30 (1)
- B&G Wind: B&G Entertainment System

Entertainment System / Video Equipment:

- (1) 42" Aft Deck
- (2) 46" Main salon, Skylounge
- (1) 40" Master
- (2) 19" Guest cabins
- (1) 40" VIP cabin
- (1) 21" Captain's cabin
- (6) 15" Crew cabins
- (1) 21" Sharp Crew Mess
- (7) X-BOXES Main salon, skylounge

Audio Equipment:

- Control 4 Audio & TV control throughout

Wheelhouse / Captain's Quarters

Behind the helm area is a large Captain's Stateroom with en-suite head and shower with plenty of storage. There is an office on the starboard side with computer and electronic alarm monitoring station for the yacht.

Forward to helm area is an elevated wrap-around seating area with doors on both sides of the wheelhouse giving access to both wing stations for easy docking. Wood flooring throughout with ample storage. 9 windows at the helm give great visibility. (see complete electronics list)

Crew

Three (3) Staterooms with bunks:

- 2 upper double bunks
- Large table seats 4
- (3) en-suite heads
- Refrigerator and freezer
- Electrolux washing machine
- Miele dryer
- Wood flooring throughout

Mechanical

- Engine Type: (2) MTU 12V4000 M90, 2,735 hp eachHours (as of 9.2019) hours:Port:3,232 hrs Stbd: 3,240 hrs
- Steering System: (2) Diesel Kamewa Waterjets 80S 62/6Gearboxes: ZF4640 3.037:1Waterjet alarm panels (2) Pilothouse
- MTU monitors: (2) Pilothouse
- Air-ConditioningType: 3 x 10-ton Dometic Chillers2x Chillers replaced Sept 2019 Generators & Electricity
- Generators: (2) 99 kW Onan Generators, 1800 RPMGenerator hours: Fwd: 0 hours as of 9.19 major overhaul "down to the blocks" in Sept. 2019Aft: 0 hours of of 9.19 major overhaul "down to the blocks" in Sept. 2019Input: 120/208 VAC 60 HzOutput: 208V/3-phase/60 Hz
- Shore Power: Atlas Shorepower 75 kW480 3-phase- single cord380 3-phase- single cord208 V, 3-phase- single cord240 V, single-phase, 2 cords
- Batteries: Main engine starting: 2 banks x 4 batteries each 24V DC gel cell (replaced 3/2017)
- Generator starting: 2 banks x 2 batteries each 24V DC gel cell (replaced 1/2017) General service: Separate 24V DC
- Displays:Other Machinery (2) Fwd and aft, Cummins Onan Marine Displays (Pilothouse)
- Watermakers: (2) Village Marine (Serviced Sept. 2019)Stabilizers: Naiad with Quantum conversion 402, 16 square foot fins (Serviced Sept. 2019)
- Bow Thruster: Quantum 150 hp- pump on each engineFuel Filtration: Westfalia Centrifuge2 primary filters + 2 racor separ on each engine2 fuel filters + 1 oil filter on each generator
- Sewage System: Headhunter Tidal Wave 2,000 gallons/dayFreshwater System: (2) Village Marine Tec SPW1200 + extra membrane1,600 US Gallons per day/unit

Security, Firefighting and Safety Equipment

- Security Equipment CCTV System: Panasonic with monitors in pilothouse and crew mess Cameras (8) port and starboard companionway, aft deck, two master forward, master aft, two in the engine room

- Safes: (6) throughout Fire-Fighting Equipment Fire/Heat/Smoke Detectors: Throughout (Serviced & brought up to date Sept 2019) Fixed Kidde
- Halon System: Engine Room Fire-fighting stations: (5) seawater fire fighting stations Portable CO2: Throughout Dry Chemical Extinguishers: Throughout Gear: SCBA's and 3 fireman suits Misc. Portable emergency fire and bilge pump
- Safety Equipment Entire safety system upgraded to exceed Bureau Veritas and Marshall Islands regulations
- Life rafts: (2) 16-man RFD inflatable rafts Life rings: (5) rings Life jackets: (3) SOLAS approved (4) Child-sized jackets Crew saver life jackets for rough weather w/ harnesses, safety lines, strome lines, torches EPIRBS: (3) GlobalFix 406 Misc.
- Full set of flares, (2) MOB smoke and light signals, safety throw line, searchlights

Dimensions / Capacities

General

- Length Overall: 144.11 feet (44.17 meters)
- Length at Waterline: 121.50 feet (37.00 meters)
- Beam: 27.17 feet (8.28 meters)
- Draft max: 6.83 feet (2.08 meters)
- Draft min: 5.50 feet (1.67 meters)
- Tonnage: 391 gross

Capacities

- Fuel Capacity Total: 19,400 US Gallons (73, 436 Liters)
- Dry Fuel Tank: 379 US Gallons
- Port & Stbd Fwd Fuel Tanks: 3,868 US Gallons Each
- Port & Stbd Aft Fuel Tanks: 4,395 US Gallons Each
- Fresh Water Capacity: 4,125 US Gallons
- Grey/Black Water Capacity: 426 US Gallons
- Lube Oil Capacity: 265 US Gallons
- Sludge Tank: 265 US Gallons
- Waste Oil Capacity: 185 US Gallons
- Water Capacity: 4,000 US Gallons (15,141 Liters)
- Speed: Max 17 knots 220 US Gallons/hour @2000 RPM
- Cruising: 12 knots 120 US Gallons/hour @1500 RPM
- Economic Cruising: 10 knots 80 US Gallons/hour @ 1300 RPM

Exclusions

- All owner's and crew's personal items, including owner's personal sets of scuba gear, all artwork, tender, skiff and jetskis.
- A detailed list of exclusions will be provided at time of sale, upon written request.

Исключения

При продаже яхты исключаются личные вещи владельца.

Отказ от ответственности

Компания предоставляет описание судна или яхты добросовестно, но не может гарантировать точность этой информации, а также не ручается за техническое состояние. Покупатель должен проинструктировать своих агентов или оценщиков исследовать представленную информацию более подробно, по собственному желанию. Продажа судна или яхты, изменение цены или снятие с продажи будет происходить без предварительного уведомления.

ФОТОГРАФИИ

7396457_20200313083959427_1_XLARGE



7396457_20200401144428448_1_XLARGE



7396457_20200313083958966_1_XLARGE



7396457_20200330130113661_1_XLARGE



7396457_20200401144431184_1_XLARGE



7396457_20200330130118458_1_XLARGE



7396457_20200330130120836_1_XLARGE



7396457_20200401144430554_1_XLARGE



7396457_20200330130122949_1_XLARGE



7396457_20200330130125068_1_XLARGE



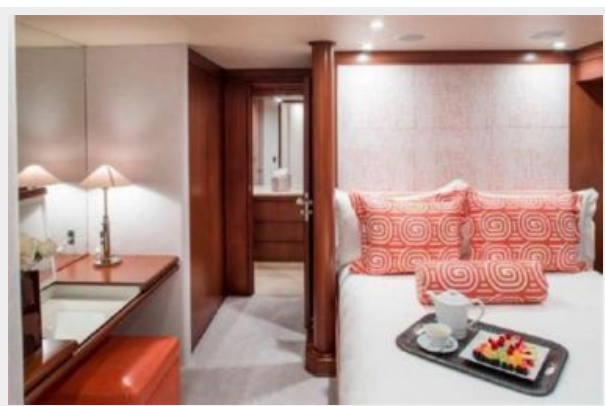
7396457_20200330130115953_1_XLARGE



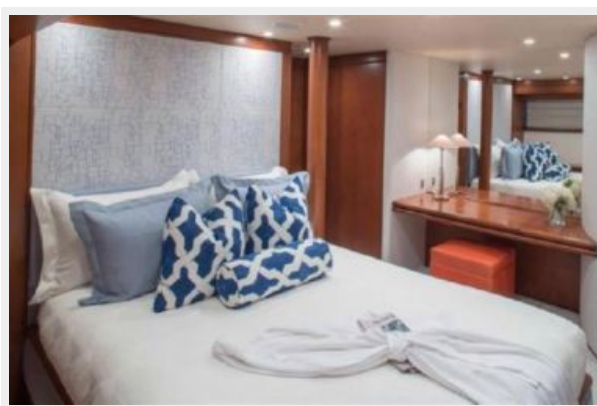
7396457_20200330131107194_1_XLARGE



7396457_20200330131109273_1_XLARGE



7396457_2020033013111622_1_XLARGE



7396457_20200330131114331_1_XLARGE



7396457_20200330131119225_1_XLARGE



7396457_20200330131116970_1_XLARGE



7396457_20200401144431724_1_XLARGE



7396457_20200401144423632_1_XLARGE



7396457_20200401144432252_1_XLARGE



7396457_20200401144434606_1_XLARGE



КОНТАКТЫ

Андрей Шестаков (Andrey Shestakov) – ведущий яхтенный брокер отдела продаж яхт и судов компании Shestakov Yacht Sales Inc. Официальный представитель Shestakov Yacht Sales Inc. для русскоговорящих клиентов в центральном офисе компании в Майами/Форт Лодердейл/Флорида/США.

Контактная информация

Email: andrey@shestakovyachtsales.com

Web: shestakovyachtsales.com

Телефоны

Краснодарский край: **+7(918)465-66-44**

США, Майами, Флорида: **+1(954)274-4435**

Время работы

Понедельник – Суббота: **9:00 - 21:00**
EDT

Воскресенье: **Закрито**

Адрес



Harbour Towne Marina, 850 NE 3rd St,
STE 213, Dania, FL 33004