

HOURGLASS — VIKING



Судостроитель: VIKING

Год постройки: 1996

Модель: Sport Yacht

Цена: **ЦЕНА ЯХТЫ ПО ЗАПРОСУ**

Местонахождение: United States

Длина общая: 50' 7" (15.42m)

Ширина: 16' 4" (4.98m)

Макс. осадка: 4' 9" (1.45m)

Крейс. скорость: 26 Kts. (30 MPH)

Макс. скорость: 30 Kts. (35 MPH)

Купить Hourglass — VIKING а также выбрать подходящую вам яхту из нашего каталога яхт вам поможет опытный яхтенный брокер Андрей Шестаков. На сегодняшний день компания Shestakov Yacht Sales Inc. имеет большое количество яхт в собственном списке продаж, а также тесно сотрудничает со всеми крупными яхтенными производителями по всему миру.

Для того чтобы купить яхту Hourglass — VIKING а также проконсультироваться по любому вопросу связанному с покупкой, продажей, чартером яхт позвоните по телефону **+7(918)465-66-44**.

ОГЛАВЛЕНИЕ

ОГЛАВЛЕНИЕ	2
ХАРАКТЕРИСТИКИ	6
Обзор	6
Основная информация	6
Размеры	6
Скорость, вместимость и масса	6
Размещение	7
Корпус и палуба	7
Информация о двигателе	7
ПОДРОБНОЕ ОПИСАНИЕ	8
Overview	8
Исключения	13
Отказ от ответственности	13
ФОТОГРАФИИ	14
3	14
2	14
4	14
5	14
7	15
6	15
8	15
9	15
10	16
11	16
12	16
13	16
15	17
14	17

17	17
16	17
18	18
19	18
20	18
21	18
22	18
23	18
25	19
24	19
26	19
27	19
29	20
28	20
30	20
31	20
32	21
33	21
34	21
35	21
36	22
37	22
38	22
39	22
40	22
41	22
42	23
43	23
44	23

45	23
46	24
47	24
49	24
48	24
51	25
50	25
53	25
52	25
54	26
55	26
57	26
56	26
59	27
58	27
60	27
61	27
62	28
63	28
64	28
65	28
66	29
67	29
68	29
69	29
70	30
71	30
72	30
73	30

74	31
75	31
76	31
77	31
78	32
79	32
80	32
81	32
83	33
82	33
84	33
85	33
86	34
87	34
89	34
88	34
90	34
91	34
92	35
93	35
94	35
95	35
КОНТАКТЫ	36
Контактная информация	36
Телефоны	36
Время работы	36
Адрес	36

ХАРАКТЕРИСТИКИ

Обзор

** This listing is available for virtual and in person tours, please contact the listing broker to schedule an appointment ***'Hourglass' features the very desirable 3 stateroom / 2 head layout, and represents the finest 50 Viking available on today's market. She has had the best in maintenance and care with an open checkbook from her very experienced owners. Many recent improvements make this a must see for anyone desiring a mid range Viking. 'Hourglass' is in "as good as it gets" condition and anyone that takes a look at her will not be disappointed. See 'Full Specs' for list of recent upgrades/improvements.MAN 820hp engine package with updates, Complete bottom job, 1100lb Davit on bow, SAT TV, Nu-teak cockpit, updated canvas, cushions & enclosure.** Tender shown in photos is excluded from sale.

Основная информация

Тип судна: Sport Yacht

Подкатегория: Convertible

Модельный год: 1996

Год постройки: 1996

Страна: United States

Размеры

Длина общая: 50' 7" (15.42m)

Ширина: 16' 4" (4.98m)

Макс. осадка: 4' 9" (1.45m)

Длина привального бруса: 50' 0"
(15.24m)

Скорость, вместимость и масса

Крейс. скорость: 26 Kts. (30 MPH)

Макс. скорость: 30 Kts. (35 MPH)

Водоизмещение: 58814 Pounds

Вместимость воды: 208 Gallons

Объем топливного бака: 804 Gallons

Размещение

Всего кают: 3

Всего коек: 5

Всего ком. состава: 2

Корпус и палуба

Материал корпуса: Fiberglass

Информация о двигателе

Двигатели: 2

Производитель: MAN

Модель: D2840LE401

Тип двигателя: Inboard

Тип топлива: Diesel

ПОДРОБНОЕ ОПИСАНИЕ

Overview

Vessel Walkthrough This three stateroom, two head layout is fantastic. Starting forward with the VIP stateroom with over/under bunks and ensuite head. The master stateroom is aft on the starboard side with a walkaround queen berth with underneath storage. The guest stateroom is located portside with over/under bunks. The head is accessed from the companionway on portside and is connected to the VIP. Also located portside is the washer and dryer. Up four steps to the salon is a starboard dinette, opposite the galley, featuring a teak table. Aft to port is an L-shaped leather sofa and teak Hi-Lo table. To starboard are cabinets which house the entertainment center and the ship's breaker panel. The boat is finished with high gloss teak and all cabinets and drawers are raised panel. Full carpet and runners found throughout the staterooms, wood flooring in the galley and salon. An upgraded luxury decor interior package has been completely redone and she shows like a modern vintage Viking!

Main Salon

- Located (4) steps up from the companionway going forward
- Large leather L-shaped settee on port side, with storage beneath, with new cover
- Designer accent pillows
- Teak hi-lo table, new
- Designer fabrics
- Window treatments with Silhouette salon blinds
- Ostrich lambrequin panels and coordinated valences
- Cherry wood plank flooring throughout
- Upholstered valences and side panels
- JVC Stereo/receiver
- JVC Compac Disc/CD Changer/Player,
- JBL Sirius Sat stereo
- Vizio Flat screen TV, pull out bracket, new
- Bose surround sound

Galley

- Black granite countertops
- Upright refrigerator and freezer with wood front panels
- Two-burner Princess glass cooktop
- Exhaust fan
- Stainless sink with Instant hot water
- Pull-out spray faucet
- Sink disposal
- Ample storage and cabinets, both above and below
- Kenmore Elite Microwave/convection oven, concealed behind pocket door

- Television, concealed behind pocket door
- Teak dinette table and leather settee with storage underneath
- Wood plank flooring throughout galley and salon

Master Stateroom

- Located amidships to starboard
- Queen walkaround berth with storage underneath
- Custom headboard, new
- Mirrored bulkhead
- Custom mattress cover with pillows and sham
- (2) Designer lamps
- Vanity with mirror and hideaway stool, leather top
- Full cedar-lined hanging locker
- (6) Drawer storage to starboard
- Telephone outlet
- Vizio Flat screen TV, new
- Overhead lighting
- (2) Two-drawer nightstands with leather tops
- Reading lights over each nightstand
- Stereo controls
- Individual SMX Climate control
- Overhead hatch with screen
- Safe under bed, new
- Carpet

Master Head

- Sink with Corian countertops
- Mirrored double medicine cabinet
- Vanity with storage beneath
- Separate shower stall with bi-fold doors
- VacuFlush head
- New sanitation hoses
- Vinyl flooring

VIP Stateroom

- Over/Under berths
- (4) Storage drawers beneath
- Custom mattress covers and pillows
- Mirrored bulkhead forward
- Cedar-lined hanging locker to port
- Overhead hatch with screen
- Reading lights

- Stereo controls
- Individual SMX II Climate controls
- Insignia flat screen TV to port with DVD storage underneath
- Carpet
- Private access to head

Guest Stateroom - Portside

- Upper/Lower beths
- (2) Drawer storage beneath
- Cedar-lined hanging locker
- Stereo controls
- Climate fan control
- Flat panel TV mounted on forward bulkhead
- Designer mattress covers and pillows
- Carpet

Guest Head

- Separate shower stall with bi-fold doors
- VacuFlush head
- Sink with corian countertops
- Mirrored double medicine cabinet
- Vanity with storage beneath
- Vinyl flooring

Electronics

- ICOM M710 SSB
- Standard Quantum GX 550 VHF
- ICOM M502 VHF
- New Garmin TRI-DATA
- New Garmin Autopilot
- New Garmin 5212 GPS Touchscreen
- KVH TracVision SAT TV
- Raymarine Radar 48 mile radar
- Raymarine E120 GPS/Plotter
- Lights in overhand
- Ritchie 6" Compass
- Bridge volume control speaker
- Stereo speakers
- Quartz tower light dimmer switch
- (2) Overhead electronics boxes
- JBL Stereo with speakers
- Guest spotlight

- Custom helm console with canvas cover
- Intercom phone

Electrical

- (12) Batteries with parallel switch
- Dockside electrical cables
- (2) Automatic battery chargers - Sentry
- 12V & 24V battery chargers
- 15 kW Onan generator, Complete rebuild 2017
- 110V, 220V AC Electrical system
- 12V, 24V DC Electrical system
- Glendinning Cablemaster rewind
- Voltage stabilizer transformer

Deck / Flybridge

- Viking Factory hardtop with overhead electronics box
- 3-Sided EZ2CY Enclosure, 4-side Strataglass with U-zips
- Flybridge seating to port and forward
- Flybridge rod storage under seating
- (2) Murray Brothers Poly helm chairs
- Rupp 3X Outriggers (currently not onboard)
- Pulpit, rails with windlass & anchor
- (6) Rod rocket launcher on aft rail
- Trolling valves
- Navigation lights
- (2) 110V Spreader lights
- Hynautic controls
- Complete instrumentation
- Viking Alarm system
- Flybridge cushions
- Low profile davit, complete rebuild 2011- tender excluded.
- Storage under helm
- 6-person Emergency life raft in cradle on bow

Cockpit

- Nu-Teak cockpit and cover boards
- Transom door with gate
- Recessed fish box with dividers
- Cockpit sink
- Step-box, Nu-teak top
- Glendenning Cablemaster
- (6) Rod holders

- Tackle center with sink, drawers, & freezer
- Indirect lighting, blue LED under gunwhales
- Bow rails & pulpit
- Fresh & Saltwater washdown
- Cleats and anchor hawse pipes
- Dockside electrical cables & water connection
- Storage lockers
- Lights in overhang
- Armstrong ladder, mounted in engine room
- Palm Beach cockpit flyer shade
- Mezzanine style cushions

Engines / Mechanical

- (2) MAN D2840LE401, 820 HP
- Central vacuum system
- Gauge package
- Engine & generator oil transfer system
- (2) Emergency crash pumps
- Racor fuel filters
- Hynautic engine controls
- Engine hour meters
- Holding tank with dockside and overboard pump out
- Electric fuel priming pumps
- Reverso Lube oil transfer system, new
- New battery charger
- Bilge buster
- (3) Underwater lights
- Trim tabs
- ZF 2:1 Ratio transmission
- (3) Automatic bilge pumps
- Emergency engine stop
- (2) Bilge blowers
- Engine synchronizer
- Bridge hydraulic wheel steering
- (2) Automatic halon fire control system
- Engine temperature alarm
- Awlgripped engine room

Recent Improvements Nu-Teak cockpit and cover boards
Garmin 5212 Touch GPS
(2) Vizio Flat screen TVs
Hull side engine vents sandblasted and painted
ReChrome fitting and rod holders
Paint handrails, engine vents, etc.
Cockpit Palm Beach Flyer
Armstrong ladder
Custom helm console for new electronics
Reverso Oil change system
A/C Pump
Interior enhancements
Safe in master stateroom
Davit completely overhauled
New sofa cover
New hi-lo teak salon table
Jan '16 - Complete A1 / A2 service both engines by Ace Marine, Vero Beach, FL

(MAN Certified) Full transmission service April '16 - Complete bottom job. Bottom stripped, barrier coated, 3 coats of bottom paint. Sea water intakes removed, new butt blocks, intakes rebedded. Two new prop shafts from Stuart propeller, spare dripless shaft seals. Propellers tuned and balanced. 2015 Engine alignment, new engine mounts. May '16 - RJ Electronics serviced all electronics, new Tri-data on flybridge. Serviced transducers. Upgraded TVs in VIP stateroom and Guest stateroom. 2016 New aft bilge pump. May '16 - New aft bridge enclosure, new helm cover. Forward enclosure zippers replaced. 2016 Entire aft bonding system redone. 2017 New bridge cushions, Helm seats, cabinet enclosures and hardware sandblasted and painted in imron cockpit and helm, new cockpit cushions. Engine room air intakes removed from hull sandblasted, primed and painted in Imron. Outriggers removed, polished and sealed (currently not on boat). 2018 Generator removed, many updates: new oil pan, heat exchanger, injection pump, 4 new injectors, new water pump, thermostat, temperature sensors, backend bearing, rotor stator cleaned and tested. New engine mounts. Engine cleaned and painted. Base mounting pan sandblasted and painted. New enclosure brackets and hardware. 2018 Port side exhaust hose replaced. Generator exhaust hose completely replaced. 2018 All sanitation hoses completely replaced. Two new shower pumps. July '18 - 4 new AGM house batteries. Boot stripe painted

Исключения

При продаже яхты исключаются личные вещи владельца.

Отказ от ответственности

Компания предоставляет описание судна или яхты добросовестно, но не может гарантировать точность этой информации, а также не ручается за техническое состояние. Покупатель должен проинструктировать своих агентов или оценщиков исследовать представленную информацию более подробно, по собственному желанию. Продажа судна или яхты, изменение цены или снятие с продажи будет происходить без предварительного уведомления.

ФОТОГРАФИИ

2



3



4



5



6



7



8



9



10



11



12



13



14



15



16



17



18



19



20



21



22



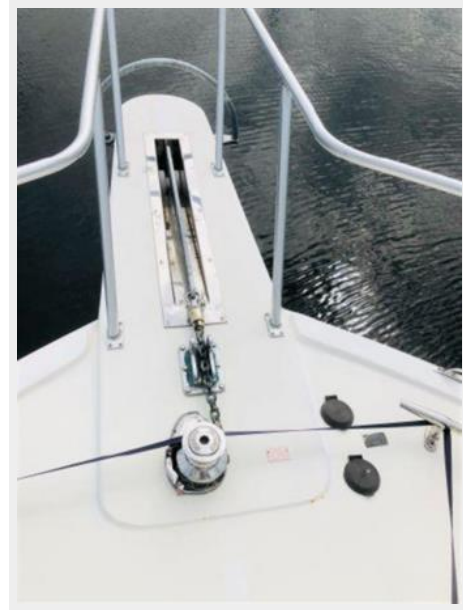
23



24



25



26



27



28



29



30



31



32



33



34



35



36



37



38



39



40



41



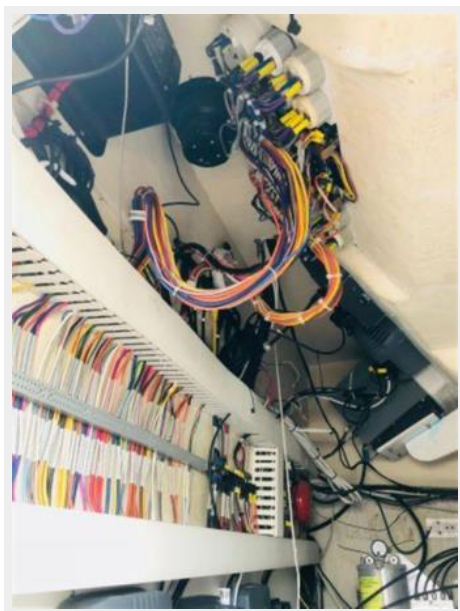
42



43



44



45



46



47



48



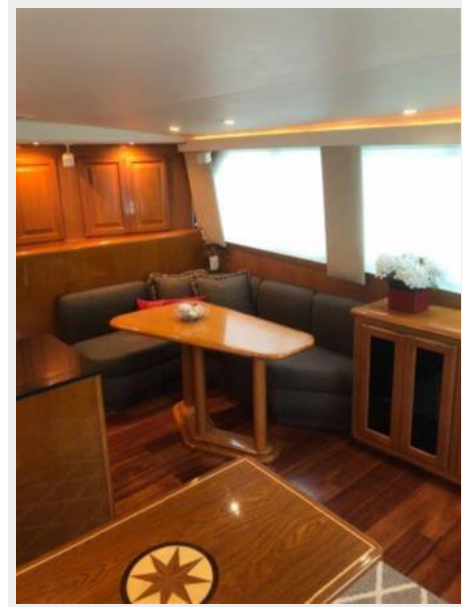
49



50



51



53



52



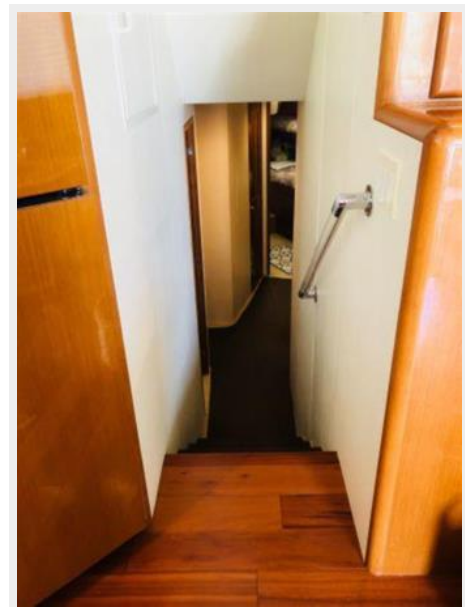
54



55



57



56



58



59



60



61



62



63



64



65



66



67



68



69



70



71



72



73



74



75



76



77



78



79



80



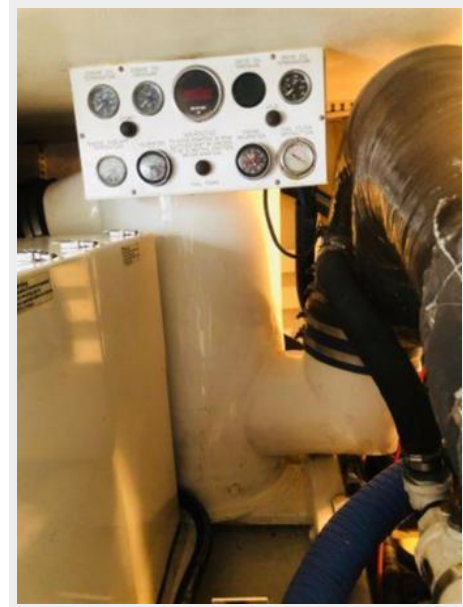
81



82



83



84



85



86



87



88



89



90



91



92



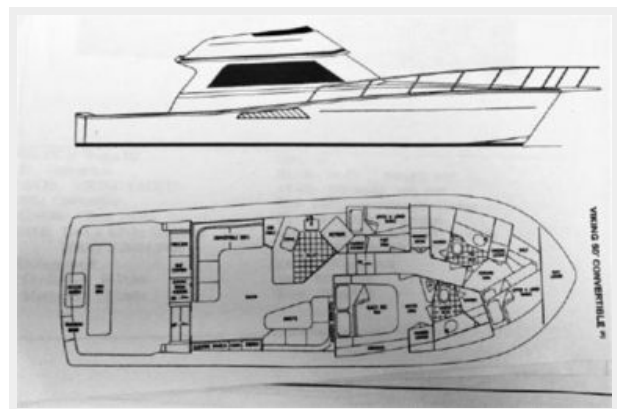
93



94



95



КОНТАКТЫ

Андрей Шестаков (Andrey Shestakov) – ведущий яхтенный брокер отдела продаж яхт и судов компании Shestakov Yacht Sales Inc. Официальный представитель Shestakov Yacht Sales Inc. для русскоговорящих клиентов в центральном офисе компании в Майами/Форт Лодердейл/Флорида/США.

Контактная информация

Email: andrey@shestakovyachtsales.com

Web: shestakovyachtsales.com

Телефоны

Краснодарский край: **+7(918)465-66-44**

США, Майами, Флорида: **+1(954)274-4435**

Время работы

Понедельник – Суббота: **9:00 - 21:00**
EDT

Воскресенье: **Закрито**

Адрес



Harbour Towne Marina, 850 NE 3rd St,
STE 213, Dania, FL 33004