

AKIKO — ALLOY



Builder: ALLOY

Year Built: 2007

Model: SHELBY

Price: PRICE ON APPLICATION

Location: Australia

LOA: 111' 7" (34.00m)

Beam: 25' 8" (7.80m)

Max Draft: 7' 7" (2.30m)

Cruise Speed: 10 Kts. (12 MPH)

Max Speed: 13 Kts. (15 MPH)

Our experienced yacht broker, Andrey Shestakov, will help you choose and buy a yacht that best suits your needs **AKIKO — ALLOY** from our catalogue. Presently, at Shestakov Yacht Sales Inc., we have a wide variety of yachts available on our sale's list. We also work in close contact with all the big yacht manufacturers from all over the world.

If you would like to buy a yacht **AKIKO — ALLOY** or would like help answering any questions concerning purchasing, selling or chartering a yacht, please call **+1(954)274-4435**

TABLE OF CONTENTS

TABLE OF CONTENTS	2
SPECIFICATIONS	4
Overview	4
Basic Information	4
Dimensions	4
Speed, Capacities and Weight	4
Accommodations	5
Hull and Deck Information	5
Engine Information	5
PHOTOS	6
Akiko-1853edited	6
Akiko-1847	6
Akiko-1854edited	6
Akiko-1858edited	6
Akiko-1875edited-2	6
Akiko-1867	6
Akiko-1822edited	7
Akiko-1819edited	7
Akiko-1813	7
Akiko-1815edited	7
Akiko-1808	7
Akiko-1811edited	7
Akiko-1820edited	8
Akiko-1928edited	8
Akiko-1932	8
Slide4-1024x543	8
Akiko-1934edited	8
Slide4-1-1024x543	8

Akiko-1937	9
Akiko-1941edited	9
Akiko-1790	9
Akiko-1788	9
Akiko-1782	9
Akiko-1784	9
Akiko-1793edited	10
Akiko-1890	10
Akiko-1891edited	10
Akiko-1894edited	10
Akiko-1903	10
Akiko-1905	10
Akiko-1910	11
Akiko-1919	11
Akiko-1920	11
Akiko-1939	11
Akiko1-1024x576	11
Akiko4-1024x576	11
CONTACTS	12
Contact details	12
Telephones	12
Office hours	12
Address	12

SPECIFICATIONS

Overview

AKIKO is an award winning vessel having won five major awards at the 2008 World Superyacht Awards with exterior design from Gregory Marshall. AKIKO underwent an extensive refit in 2016-17 and is the perfect versatile expedition superyacht.

She features spacious living areas and full height windows give an abundance of light and her contemporary interior is a beautiful combination of natural colours inspired by her home cruising grounds in Australia, she is both modern and luxurious.

Basic Information

Category: SHELBY

Sub Category: Motor Yacht

Model Year: 2007

Year Built: 2007

Refit Year: 2016

Country: Australia

Dimensions

LOA: 111' 7" (34.00m)

Beam: 25' 8" (7.80m)

Max Draft: 7' 7" (2.30m)

Speed, Capacities and Weight

Cruise Speed: 10 Kts. (12 MPH)

Cruise Speed Range: 4300

Max Speed: 13 Kts. (15 MPH)

Displacement: 524700.18356 Pounds

Gross Tonnage: 281 Pounds

Water Capacity: 1981.29039 Gallons

Fuel Capacity: 8796.9293316 Gallons

Fuel Consumption: 29.05892572 Gallons

Accommodations

Total Cabins: 5

Crew Sleeps: 3

Hull and Deck Information

Hull Material: Aluminum

Deck Material: Teak

Exterior Designer: Gregory Marshall

Interior Designer: Alloy Yachts

Engine Information

Engines: 1

Manufacturer: Caterpillar

Model: 3406E

Engine Type: Inboard

Fuel Type: Diesel

PHOTOS

Akiko-1853edited



Akiko-1847



Akiko-1854edited



Akiko-1858edited



Akiko-1875edited-2



Akiko-1867



Akiko-1822edited



Akiko-1819edited



Akiko-1813



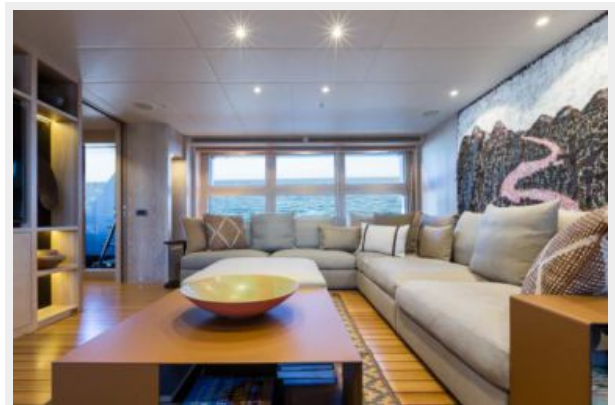
Akiko-1815edited



Akiko-1808



Akiko-1811edited



Akiko-1820edited



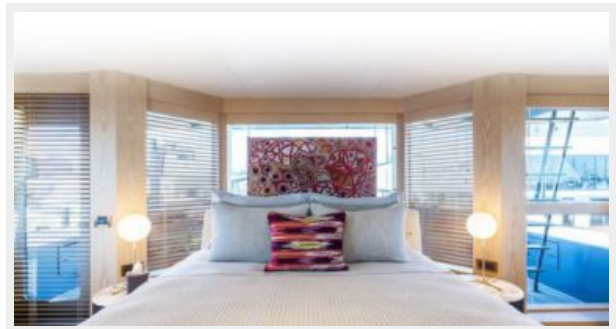
Akiko-1928edited



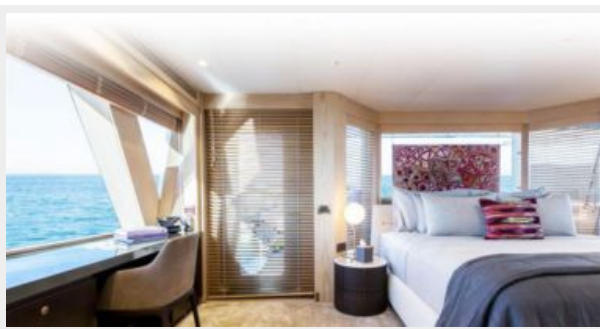
Akiko-1932



Slide4-1024x543



Slide4-1-1024x543



Akiko-1934edited



Akiko-1937



Akiko-1941edited



Akiko-1790



Akiko-1788



Akiko-1782



Akiko-1784



Akiko-1793edited



Akiko-1890



Akiko-1891edited



Akiko-1894edited



Akiko-1903



Akiko-1905



Akiko-1910



Akiko-1919



Akiko-1920



Akiko-1939



Akiko1-1024x576



Akiko4-1024x576



CONTACTS

Andrey Shestakov, leading yacht broker of the sales department of Shestakov Yacht Sales Inc. Shestakov Yacht Sales Inc., the official representative of the Miami/Fort Lauderdale FL headquarters.

Contact details

Email: andrey@shestakovyachtsales.com

Web: shestakovyachtsales.com/en/

Telephones

USA: +1(954)274-4435

Office hours

Monday – Saturday: **9:00 - 21:00** EDT

Sunday: **closed**

Address



Harbour Towne Marina, 850 NE 3rd St,
STE 213, Dania, FL 33004