

ELUSIVE — CUSTOM CAROLINA



Судостроитель: CUSTOM CAROLINA

Длина общая: 41' 10" (12.75m)

Год постройки: 2013

Ширина: 3' 6" (1.07m)

Модель: Катер для спортивной рыбалки

Цена: ЦЕНА ЯХТЫ ПО ЗАПРОСУ

Местонахождение: United States

Купить Elusive — CUSTOM CAROLINA а также выбрать подходящую вам яхту из нашего каталога яхт вам поможет опытный яхтенный брокер Андрей Шестаков. На сегодняшний день компания Shestakov Yacht Sales Inc. имеет большое количество яхт в собственном списке продаж, а также тесно сотрудничает со всеми крупными яхтенными производителями по всему миру.

Для того чтобы купить яхту Elusive — CUSTOM CAROLINA а также проконсультироваться по любому вопросу связанному с покупкой, продажей, чартером яхт позвоните по телефону **+7(918)465-66-44**.

ОГЛАВЛЕНИЕ

ОГЛАВЛЕНИЕ	2
ХАРАКТЕРИСТИКИ	5
Обзор	5
Основная информация	5
Размеры	5
Скорость, вместимость и масса	5
Размещение	6
Корпус и палуба	6
Информация о двигателе	6
ПОДРОБНОЕ ОПИСАНИЕ	7
Overview	7
Исключения	9
Отказ от ответственности	9
ФОТОГРАФИИ	10
2	10
3	10
4	10
5	10
6	10
7	10
8	11
9	11
11	11
10	11
12	12
13	12
15	12
14	12

16	13
17	13
18	13
19	13
20	13
21	13
22	14
23	14
24	14
25	14
26	15
27	15
28	15
29	15
30	16
31	16
33	16
32	16
34	17
35	17
36	17
37	17
38	18
39	18
40	18
41	18
42	18
43	18
44	19

45	19
46	19
47	19
48	19
КОНТАКТЫ	20
Контактная информация	20
Телефоны	20
Время работы	20
Адрес	20

ХАРАКТЕРИСТИКИ

Обзор

This listing is available for virtual and in person tours, please contact the listing broker to schedule an appointment"Elusive" is a fine example of the work of the Lewis Brothers from the shores of Harkers Island North Carolina. The now incredibly popular "Carolina Flare" styled hull originated on Harkers island and was introduced by the Lewis family. This 41 foot boat is really a commercial vessel disguised as a pleasure Sportfish. She is documented as a commercial vessel and carries Federal and Rhode Island Fisheries permits for Swordfish and Tuna. The hull was built in 2005 and she was fully outfitted in 2013."Elusive" is ready to launch and go fishing! Recent survey is available upon request. Please call or email to schedule an appointment to view this vessel.

Основная информация

Тип судна: Катер для спортивной рыбалки

Модельный год: 2013

Год постройки: 2013

Страна: United States

Открытая палуба мостика: Да

Размеры

Длина общая: 41' 10" (12.75m)

Ширина: 3' 6" (1.07m)

Длина привального бруса: 41' 0" (12.50m)

Скорость, вместимость и масса

Водоизмещение: 26000 Pounds

Вместимость воды: 60 Gallons

Вместимость сточного бака: 25 Gallons

Объем топливного бака: 415 Gallons

Размещение

Всего кают: 1

Всего коек: 5

Всего ком. состава: 1

Корпус и палуба

Материал корпуса: Wood

Отделка корпуса: Aluminum

Информация о двигателе

Двигатели: 2

Производитель: John Deere

Модель: 6068 SFM50 – Turbo

Тип двигателя: Inboard

Тип топлива: Diesel

ПОДРОБНОЕ ОПИСАНИЕ

Overview

Hull and Superstructure Construction Construction Scantlings: Heavily built using Cypress for structural members: keel (Laminated), frames, floors, gussets and chine log, and deck beams. White Cedar strip planking is used on the hull, topsides and bottom, using SS fasteners and West System epoxy. The transom is Okoume marine plywood; two plies of 1 inch. Frames are sawn with gussets at the chine. Floors all have 3/8" Okoume ply face plating on the Cypress. The exterior of the hull is a heavy lay up of woven roving and matt in West System epoxy. The internal hull has the same fiberglass in epoxy as the exterior, in the bilges from the keel to the LWL. The rest of the hull interior from the LWL to the rail is epoxy barrier coated. The deck is Okoume plywood; 2 plies of approx. 3/4" with fiberglass over all. Teak over glued and mechanically fastened on the cockpit deck. The cockpit sole and covering boards are royal cedar rom Spain. The house and flybridge are Okoume marine plywood with fiberglass overall. As with the rest of the hull West System is the epoxy in use. The hull and houses were faired using micro balloons and micro fibers in West System epoxy, all was then barrier coated before Awlgrip finish was applied. The interior liner is light marine plywood with fiberglass cloth over. Superstructure/Layout: Flush deck forward to house and flybridge and open working deck aft. The chain locker is well fwd with collision bulkhead before the interior spaces. Below has fwd over/under berths. Next aft is a port side berthing area and stbd head with enclosed shower. Up steps to the saloon with seating all around and a galley are fwd port. Exit through a varnished door to the working deck; a fighting chair is on the centerline, to port is the aft throttle position with an additional fish finder. On centerline at the house is the ladder to the flybridge and helm station with all nav gear. Accommodations "Elusive" has a bright an airy interior that is simply equipped with a workmanlike finish. Starting from the bow is a cabin with two over/under berths to port and a single berth to starboard. Moving aft to port is a large over/under berth and a head with separate stall shower to starboard. The main salon has a large galley to port with a freezer and a large L shaped settee to starboard. Mechanical

- John Deere
- Model: 6068 SFM50 – Turbocharged w/ aftercoolers
- Serial Number(s): CD6068S822747 / CD6068S807336#Cylinders/HP: In line 6 /300 @ 2600 Rpm
- Cooling System: Fresh water heat exchanger
- Crankcase Ventilation: "Racor Crank vent" 10CFM capacity. System allows that no oily mist is introduced into the engine compartment, and is rerouted to the air intake. This has left a dry and clean compartment.
- Gauges and Alarms at helm
- Reduction Gear(s): "ZF 2801A" ratio; 2.00:1.
- Serial Number(s): 20052215 / 20052216

- Shaft(s): 2" Stainless Steel. Inspection of the propeller and shaft revealed all to be in
- Propeller(s): 4 bladed Bronze 24x29 outboard turning
- Stuffing Boxes: Dripless, water cooled
- Controls: Single lever, "ZF" electronic
- Eng.Rm.Ventilation: 12v Blower (33 CFR 183.610)
- Insulation: Acoustic foam
- Steering Stations: One
- Wheel/Tiller: SS wheel
- Steering Gear: Hydraulic.
- Rudder(s): Stainless Steel plate
- Bilge Pump(s): (3) "Rule" (2) on float switches, (1) manual switch only. Engine intake valves open to the interior of the bilge while shutting off seawater to the pump to allow for engine seawater cooling to be used as emergency evacuation pumps
- High Bilge Alarm: Two (ABYC H-22)
- Fresh Water Pressure: "Jabsco" w/ accumulator tank
- Bait well pump: Two. One of which is teed to provide sea water washdown
- Other pumps: (2) "Jabsco" macerator pumps for fish locker evacuation
- Head(s): "Jabsco" 12vdc macerator type
- Sump/Pump: Enclosed with "Rule" submersible on a float switch
- Trim Tabs: Single cylinder, 12vdc/hydraulic

Electrical

- DC control panel: House stbd aft. Volt and ammeter in panel.Circuit Protection: Magnetic breakers & fuses
- Installation: DC wiring is stranded copper w/ common ground bus to engine. Harnessing in place. Well loomed, compliant w/ NFPA 302 7-13.4, ABYC E-11
- AC-Shorepower: 30 amp service with control panel in saloon
- Generator: Northern Lights 6Kw Serial #6732-33941C with 806 hours located Port For'd engine space
- Cabin Lights: 12vdc
- Working Lights: 12vdc LED
- Navigation Lights: 12vdc
- Anchor Light: 12vdc - good
- Hot Water Heater: "Seaward" 6 Gallon -120vac only

Electronics

- Compass(es): Ritchie
- VHF Radio: Icom IC M412
- Autopilot: Sitex SP-110
- Depthfinder: (2) Furuno Fish finders, one helm, the other at the cockpit
- GPS/Radar: Furuno -one color plotter w/ color radar
- Stereo: AM/FM CD

Safety Equipment

- SOLAS equipped for offshore
- Throwable Device: Lifesling
- PFD's: USCG Type II (33 USC 175)
- VDS: "SOLAS" kit (33 USC 175)
- Fire Extinguishers: (2) 5 Lb ABC dry chemical, (1) 8 Lb. Condition: Gauges in green, no rust. Inspection current to 2017. Re-inspection is planned
- SOLAS approved 4 man liferaft – current inspection
- 406 EPIRB

Equipment

- Danforth Anchor with 5/16" chain w/ 1/2" Nylon rode
- 22' Shaffer Double Outriggers with 8' Layouts
- 2 Deck Fish Boxes that hold 130 Gallons Each
- Cockpit Ice Box - Holds 600 lbs
- Docklines: Misc. braid 3 strand
- Fenders: Medium pneumatic
- Covers: Hard top on the fly bridge, canvas partial helm enclosure
- Reboarding: Through transom gate

Исключения

При продаже яхты исключаются личные вещи владельца.

Отказ от ответственности

Компания предоставляет описание судна или яхты добросовестно, но не может гарантировать точность этой информации, а также не ручается за техническое состояние. Покупатель должен проинструктировать своих агентов или оценщиков исследовать представленную информацию более подробно, по собственному желанию. Продажа судна или яхты, изменение цены или снятие с продажи будет происходить без предварительного уведомления.

ФОТОГРАФИИ

2



3



4



5



6



7



8



9



10



11



12



13



14



15



16



17



18



19



20



21



22



23



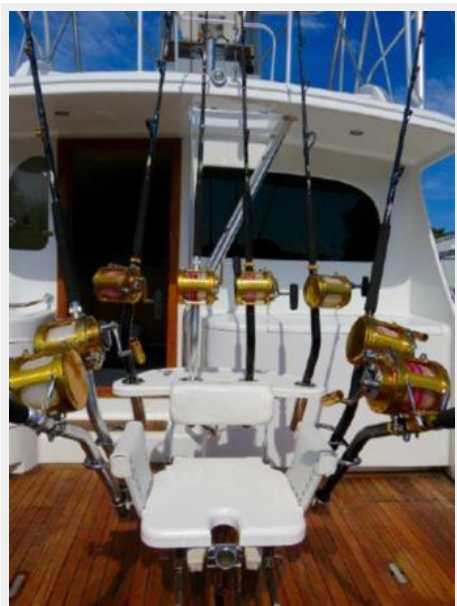
24



25



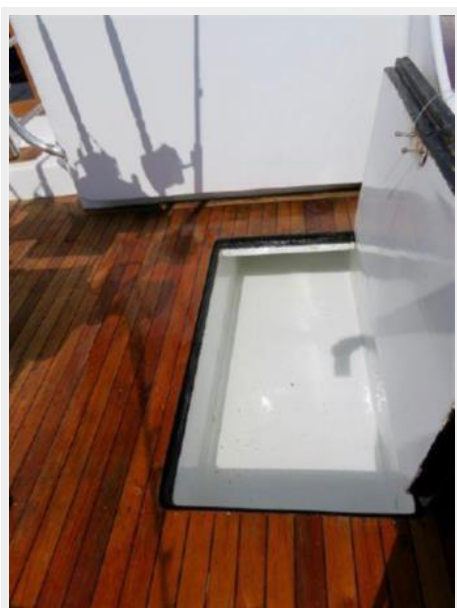
26



27



28



29



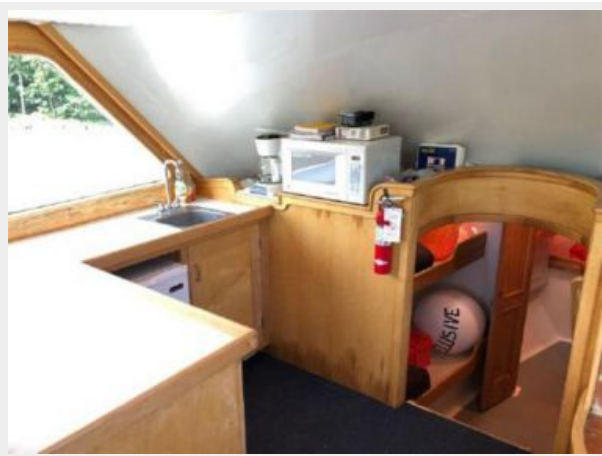
30



31



32



33



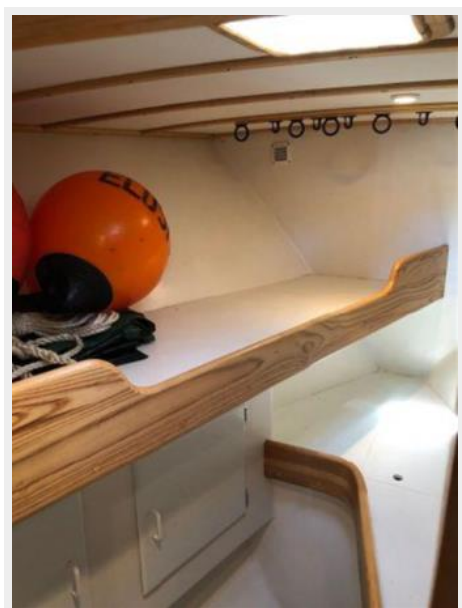
34



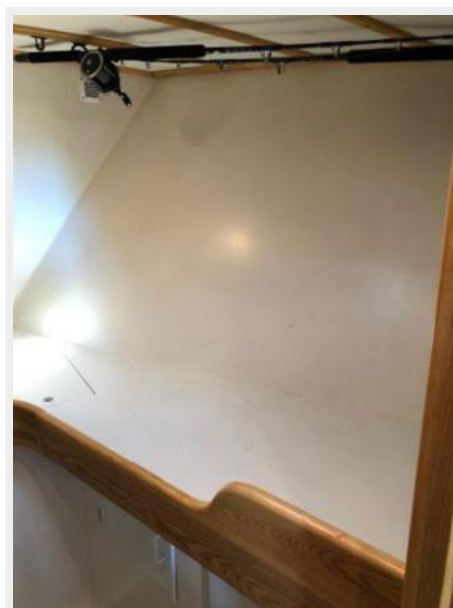
35



36



37



38



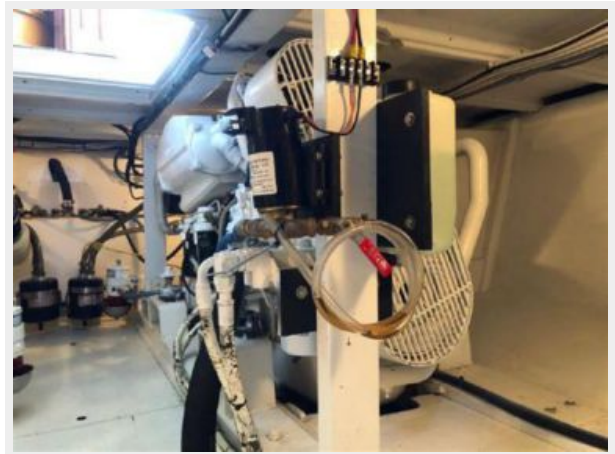
39



40



41



42



43



44



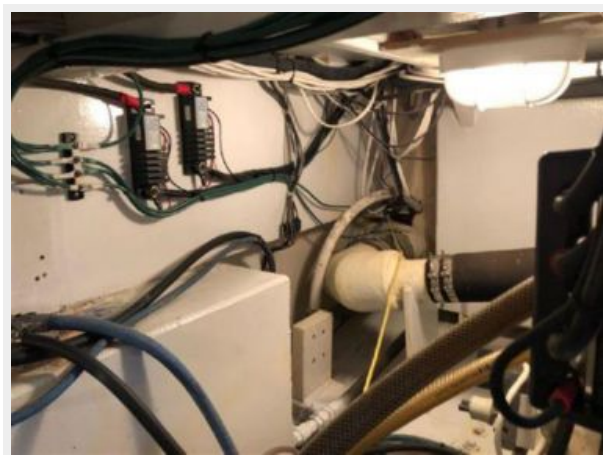
45



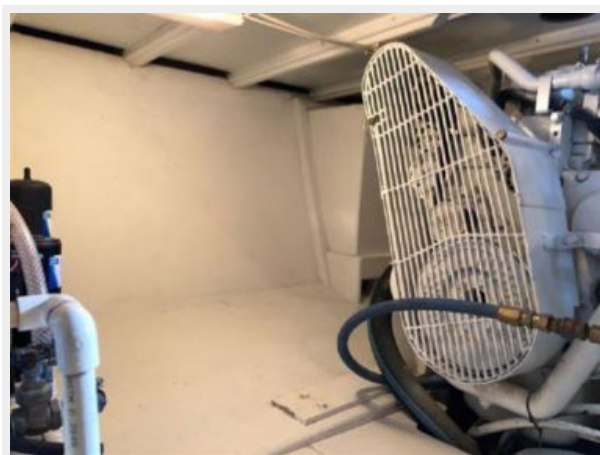
46



47



48



КОНТАКТЫ

Андрей Шестаков (Andrey Shestakov) – ведущий яхтенный брокер отдела продаж яхт и судов компании Shestakov Yacht Sales Inc. Официальный представитель Shestakov Yacht Sales Inc. для русскоговорящих клиентов в центральном офисе компании в Майами/Форт Лодердейл/Флорида/США.

Контактная информация

Email: andrey@shestakovyachtsales.com

Web: shestakovyachtsales.com

Телефоны

Краснодарский край: **+7(918)465-66-44**

США, Майами, Флорида: **+1(954)274-4435**

Время работы

Понедельник – Суббота: **9:00 - 21:00**
EDT

Воскресенье: **Закрето**

Адрес



Harbour Towne Marina, 850 NE 3rd St,
STE 213, Dania, FL 33004