

RIPPLE — EAGLE



Судостроитель: EAGLE

Год постройки: 2002

Модель: Trawler Yacht

Цена: ЦЕНА ЯХТЫ ПО ЗАПРОСУ

Местонахождение: United States

Длина общая: 40' 5" (12.32m)

Ширина: 14' 5" (4.39m)

Крейс. скорость: 8 Kts. (9 MPH)

Купить **Ripple — EAGLE** а также выбрать подходящую вам яхту из нашего каталога яхт вам поможет опытный яхтенный брокер Андрей Шестаков. На сегодняшний день компания **Shestakov Yacht Sales Inc.** имеет большое количество яхт в собственном списке продаж, а также тесно сотрудничает со всеми крупными яхтенными производителями по всему миру.

Для того чтобы купить яхту **Ripple — EAGLE** а также проконсультироваться по любому вопросу связанному с покупкой, продажей, чартером яхт позвоните по телефону **+7(918)465-66-44**.

ОГЛАВЛЕНИЕ

ОГЛАВЛЕНИЕ	2
ХАРАКТЕРИСТИКИ	4
Обзор	4
Основная информация	4
Размеры	4
Скорость, вместимость и масса	4
Размещение	4
Корпус и палуба	5
Информация о двигателе	5
ПОДРОБНОЕ ОПИСАНИЕ	6
Overview	6
Исключения	10
Отказ от ответственности	10
ФОТОГРАФИИ	11
2	11
3	11
4	11
5	11
6	11
7	11
8	12
9	12
10	12
11	12
12	12
13	12
14	13
15	13

16	13
17	13
18	13
19	13
20	14
21	14
22	14
23	14
24	14
25	14
26	15
27	15
29	15
28	15
30	15
31	15
КОНТАКТЫ	16
Контактная информация	16
Телефоны	16
Время работы	16
Адрес	16

ХАРАКТЕРИСТИКИ

Обзор

*This listing is available for virtual and in person tours, please contact the listing broker to schedule an appointment*There are few vessels in the 40' range that accomplish what the Eagle 40 does - aft cockpit, pilot house, bridge deck with upper steering station, spacious foredeck area, safe walk-around

Основная информация

Тип судна: Trawler Yacht

Модельный год: 2002

Год постройки: 2002

Страна: United States

Размеры

Длина общая: 40' 5" (12.32m)

Длина по ватерлинии: 42' 11" (13.08m)

Ширина: 14' 5" (4.39m)

Длина привального бруса: 40' 0"
(12.19m)

Скорость, вместимость и масса

Крейс. скорость: 8 Kts. (9 MPH)

Водоизмещение: 28000 Pounds

Вместимость воды: 220 Gallons

Вместимость сточного бака: 25 Gallons

Объем топливного бака: 440 Gallons

Размещение

Всего кают: 1

Всего ком. состава: 1

Корпус и палуба

Материал корпуса: Fiberglass

Информация о двигателе

Двигатели: 1

Производитель: Cummins

Тип двигателя: Inboard

Тип топлива: Diesel

ПОДРОБНОЕ ОПИСАНИЕ

Overview

Accommodations Board via beautifully crafted transom door to the spacious cockpit through hinged teak door to saloon/galley with 6'6" headroom, built-in L settee and table to port, which converts to queen bed, straight settee to starboard, five sliding aluminum windows, teak and holly sole polished teak woodwork. Floorboards open for access to shaft seal and large storage area. U shaped galley to port, refrigerator/freezer, washer/dryer to starboard. Up three steps to generous Pilothouse, sliding teak doors with fixed windows both port and starboard accessing walk around decks, two fixed windows port and starboard, two opening windows aft, L shaped settee to port, which converts to watch berth with privacy curtain, chart table, starboard helm with fold-out pilot's seat and footrest. Teak and holly sole. Easy access to engine room through fold upstairs in the saloon and floorboards of Pilothouse. Down four steps to modest companionway and doors to head and stateroom. Stateroom has walk-around queen bed with drawers underneath, generous storage and hanging locker, long port and starboard bookshelves above the berth. Four opening portlights and three opening deck hatches provide ample light and air. A second door allows ensuite access to head. The roomy head has full stall shower with seat and storage, vanity, portlight. The flybridge has Bimini top, double seat at the upper helm, with propane tank storage. All doors, deck hatches, portlights and saloon windows have screens. All windows and pilothouse doors have sun shades. Galley

- U shaped galley
- Double deep stainless steel sinks
- Force 10 four burner propane with oven
- G.E. Profile microwave/convection oven
- Europro toaster oven
- Formica countertop with deep fiddles
- Norcold 12V/110V refrigerator with freezer on bottom RFU 8000
- 12V fan
- Splendide 2000 vented washer/dryer
- Foot pump has a water filter for drinking water
- Generous storage
- Euro-Pro Toaster
- Microwave
- 4-Piece Nautical Dishware
- 2 Pots with Lids
- 3 Frying Pans
- Strainer
- Large Serving Tray
- Large Plastic Salad Bowl with Serving Tray

- Large George Forman Grill
- Cutting Board

Engines

- Cummins 6BT 5.9-M 220hp Diesel Engine with 2159 hours
- ZF 2.50:1 marine gear
- Raycor fuel/water separator
- Fuel polishing system
- Wesmar bow thruster V1-8E
- Hydronic hydraulic steering
- Mermaid Reverse Cycle Air Conditioning 16,500 Btu cooling, 18,000 Btu heating
- Dripless Shaft Seal
- Freshwater cooling
- 1750 rpm-8 knots-3 gallons per hour
- (2) electric bilge pumps with automatic float switches
- (1) manual bilge pump
- Pressurized water system with 11 gallon water heater
- Water system with foot pump has filter for drinking/cooking
- Tempo engine oil changing system

Electronics

- Raytheon Pathfinder SL70 Radar 24 mile
- Ray ST60 depth
- Garmin GPS 4212
- Icom IC-M402
- Ritchie compass (2)
- Humminbird Piranhamax Fish Finder
- Garmin GPSmap 162 Chartplotter
- Shakespeare 2020/2030 TV antenna
- Sony AM/FM/CD/MP3 Stereo with speakers throughout

Electrical

- (3) New 8 D batteries
- New 4 D bow thruster battery
- 500 W solar panels above the Pilothouse
- Tri Star Solar Charge controller
- Complete hook-up for a gen-set: a thru-hull fitting, a sea-strainer, a fuel line, a fuel filter, and a complete exhaust system that runs out the transom. In addition to this, there is a Freedom Marine 2500watt/130amp inverter already connected, and control switches at the helm and at the unit. There are support stringers built into the hull, to which a gen-set can be bolted. Everything has already been done for a generator to easily be plugged in.
- 12V DC electrical service

- 30A/120V AC electrical service
- Galvanic isolator
- Blue Sea main circuit breaker panel with amp and volt meters, AC&DC
- Master battery switch in Pilothouse
- Bow thruster switch in stateroom
- 100' of shore cable
- 2 million candlepower rechargeable spotlight
- Small inverter to charge small electronic.

Pilothouse

- 4" Fan for defogging windows
- 5" Brass Clock
- 5" Brass Barometer
- Ship's Papers Binder
- Engine Service Binder
- Maintenance Binder
- Windlass Wrench
- Hand-Held Horn
- Deck-Fitting Keys
- Satchel of All Papers for All Equipment
- Screens for Pilot House Doors
- Coast Guard required equipment (flares, flags, books, etc.)
- Shades for Pilothouse Windows (windscreen)
- Anchor Buoy
- Chart Light
- Fire Extinguisher
- First Aid Kit

Saloon

- Newer Upholstery
- Samsung Smart TV
- Cherry Wood Custom Blinds
- Washer-Dryer
- 2 Varnished wood shelves from washer/dryer locker
- Brass electric lamp
- Half-Model of Eagle 40
- Fire Extinguisher
- Screen for Aft Exterior Door
- Screens for all windows
- Teak Table

Stateroom

- 14"110v Lamp with Shade
- Plastic Liner System for under-berth storage area
- Filler cushion for Saloon Berth
- Fire Extinguisher
- Sheets with Bed Spread

Hull and Deck

- Beugel anchor with powerball swivel with 180' 3/8" chain and 150' of 3/4" line
- Bow anchor roller
- Bruce anchor with chain and 150' rode
- Danforth anchor
- Emergency tiller with cockpit access plate
- Radar reflector
- Wide walk decks
- Port and starboard bulwark boarding doors
- Pilothouse with port and starboard doors
- Starboard transom door
- Salt water deck washdown system with 50'hose
- Fresh water hot and cold cockpit shower
- Aluminum mast with boom that will drop to 10'6"
- 12" cleats bow and stern
- Bulwark chocks with cleats in midships
- Black Sunbrella extended Bimini top
- Magma propane grill
- Swim platform
- Hinged swim platform ladder
- Propane tank storage locker holds 3 tanks
- 6'6" headroom throughout
- Two coats InterLux ACT bottom paint - September 2018
- Full barrier coat - never had a blister
- Windshield wipers and horn
- Hull-solid fiberglass laminated with internal grid molding
- House and deck fiberglass laminated with plastic honey-comb structural coring as required
- Non-skid decks
- Custom zippered opening door screens
- Screens for all doors, deck hatches, port lights and saloon windows
- Sun shades for all windows and pilothouse doors
- Oversized stainless steel rails
- 9' West Marine inflatable with 8hp four stroke 8 hp Mercury w/anchor and oars. (2016)
- Danforth S-2000 Anchor
- Anchor Rode of 150' of 3/4" braid and 12' of galvanized chain
- Transom Flag Staff Shore Power Electrical Cord Emergency Tiller
- Lewmar Claw Anchor Aluminum Boathook

- 3/4" nylon Dock Lines/Fenders
- Magma Catalina Grill w/rail mounts and covers US Flag
- Fire Extinguisher
- Sunbrella Cover for Upper Helm Full Bimini Cover in Black Sunbrella

Исключения

При продаже яхты исключаются личные вещи владельца.

Отказ от ответственности

Компания предоставляет описание судна или яхты добросовестно, но не может гарантировать точность этой информации, а также не ручается за техническое состояние. Покупатель должен проинструктировать своих агентов или оценщиков исследовать представленную информацию более подробно, по собственному желанию. Продажа судна или яхты, изменение цены или снятие с продажи будет происходить без предварительного уведомления.

ФОТОГРАФИИ

2



3



4



5



6



7



8



9



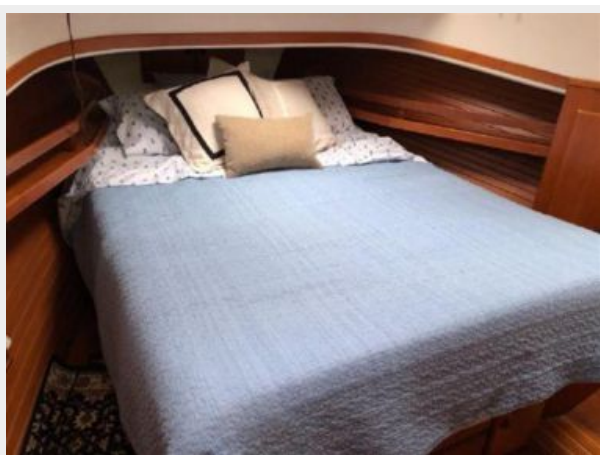
10



11



12



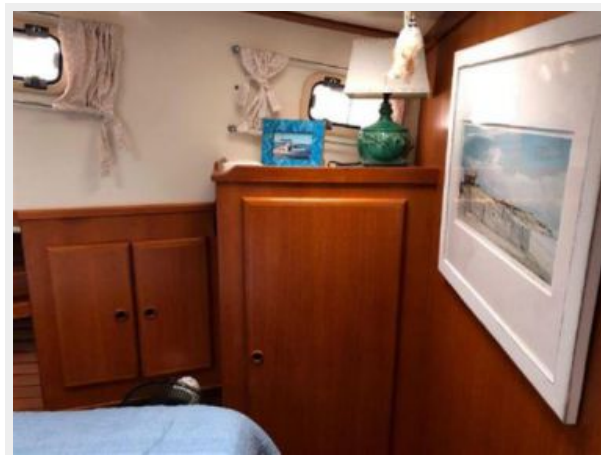
13



14



15



16



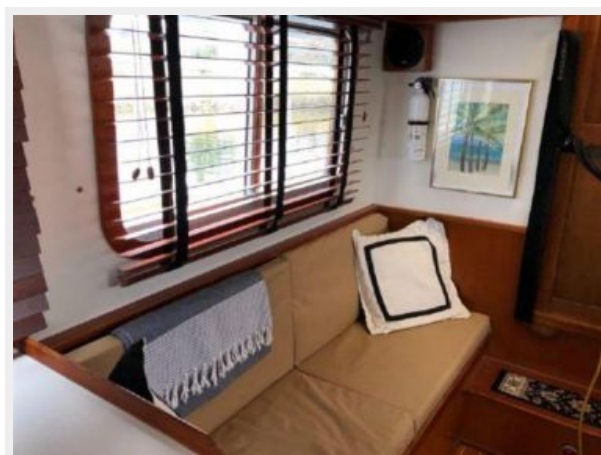
17



18



19



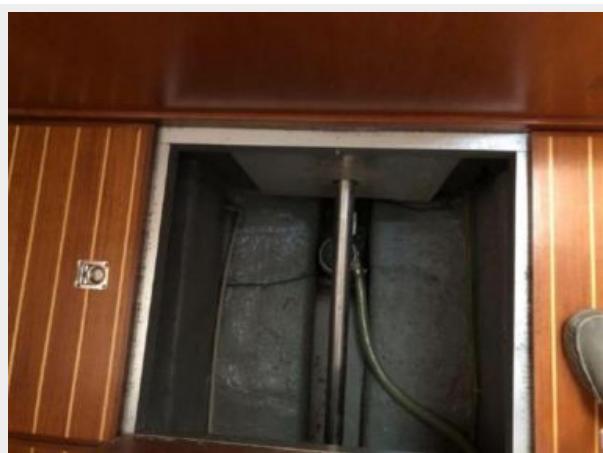
20



21



22



23



24



25



26



27



28



29



30



31



КОНТАКТЫ

Андрей Шестаков (Andrey Shestakov) – ведущий яхтенный брокер отдела продаж яхт и судов компании Shestakov Yacht Sales Inc. Официальный представитель Shestakov Yacht Sales Inc. для русскоговорящих клиентов в центральном офисе компании в Майами/Форт Лодердейл/Флорида/США.

Контактная информация

Email: andrey@shestakovyachtsales.com

Web: shestakovyachtsales.com

Телефоны

Краснодарский край: **+7(918)465-66-44**

США, Майами, Флорида: **+1(954)274-4435**

Время работы

Понедельник – Суббота: **9:00 - 21:00**
EDT

Воскресенье: **Закрито**

Адрес



Harbour Towne Marina, 850 NE 3rd St,
STE 213, Dania, FL 33004