

PILOTS LOUNGE — SILVERTON



Builder: SILVERTON

Year Built: 2001

Model: Motor Yacht

Price: PRICE ON APPLICATION

Location: United States

LOA: 43' 9" (13.34m)

Beam: 14' 1" (4.29m)

Max Draft: 3' 3" (0.99m)

Our experienced yacht broker, Andrey Shestakov, will help you choose and buy a yacht that best suits your needs **Pilots Lounge — SILVERTON** from our catalogue. Presently, at Shestakov Yacht Sales Inc., we have a wide variety of yachts available on our sale's list. We also work in close contact with all the big yacht manufacturers from all over the world.

If you would like to buy a yacht **Pilots Lounge — SILVERTON** or would like help answering any questions concerning purchasing, selling or chartering a yacht, please call **+1(954)274-4435**

TABLE OF CONTENTS

TABLE OF CONTENTS	2
SPECIFICATIONS	5
Overview	5
Basic Information	5
Dimensions	5
Speed, Capacities and Weight	5
Accommodations	6
Hull and Deck Information	6
Engine Information	6
DETAILED INFORMATION	7
Overview	7
Exclusions	7
Disclaimer	8
PHOTOS	9
2	9
3	9
4	9
5	9
7	10
6	10
8	10
9	10
10	10
11	10
12	11
13	11
14	11
15	11

16	11
17	11
18	12
19	12
20	12
21	12
22	12
23	12
24	13
25	13
26	13
27	13
28	13
29	13
31	14
30	14
32	14
33	14
34	15
35	15
37	15
36	15
39	16
38	16
40	16
41	16
42	17
43	17
44	17

45	17
CONTACTS	18
Contact details	18
Telephones	18
Office hours	18
Address	18

SPECIFICATIONS

Overview

*This listing is available for virtual and in person tours, please contact the listing broker to schedule an appointment*Pilots Lounge is a 2001 Silverton Motor Yacht. She is unlike any of the other 392s on the market. Her current owners have updated and serviced her through their ownership. The listing detail and pictures will make you understand that a cookie cutter listing detail would not do her justice. The detail and care she has had will show very quickly. She features a full suite of Garmin Electronics, A custom entertainment system with KVH Sat TV, 2 Zone AC/Heating System, new soft goods throughout the entire boat, newer galley equipment, and constant maintenance on the Twin 425Hp engines and 8Kw generator.

Check out the detail listing for more information and make your appointment today to see this great boat!

Basic Information

Category: Motor Yacht

Model Year: 2001

Year Built: 2001

Country: United States

Dimensions

LOA: 43' 9" (13.34m)

Beam: 14' 1" (4.29m)

Max Draft: 3' 3" (0.99m)

Clearance: 18' 4" (5.59m)

MFG Length: 39' 0" (11.89m)

Speed, Capacities and Weight

Displacement: 23577 Pounds

Water Capacity: 100 Gallons

Holding Tank: 60 Gallons

Fuel Capacity: 286 Gallons

Accommodations

Total Cabins: 2

Total Heads: 2

Hull and Deck Information

Hull Material: Fiberglass

Hull Configuration: Modified V-Hull

Engine Information

Engines: 2

Manufacturer: Crusader

Model: Captain's Choice 8.1 HO

Engine Type: Inboard

Fuel Type: Gas

DETAILED INFORMATION

Overview

Electrical 110V Shore Power Inlet 50Amp Shore Power Cord 110V Breaker Panel 110V Outlets 12V Breaker Panel 12V Outlets 12V Bilge Pump 12V USCG Navigation Lights 12V Lights 12V Underwater Lights 12V Fans Deep Cycle Marine Batteries, (2019) ProMariner ProNautic 12V/60Amp Battery Charger **Electronics** Navigation: Garmin 8200 Chartplotter- Port, (Installed 2013 & Updated 2018) Garmin 8200 Chartplotter – Starboard, (Installed 2013 & Updated 2018) Garmin HD Radar Dome, (2013) Garmin 2kw Dual Frequency Fishfinder Garmin Autopilot (2013) Garmin Instrument Display Depth, Speed, Trim Tab, Temp & Heading (2013) Standard Horizon Matrix GX2150, VHF Entertainment: KVH Tracvision Sat TV, (2018) Samsung 32" LCD TV, Salon on a lift – Sat TV Sony Stereo System for Salon Samsung LCD TV, Fwd Stateroom – Sat TV Samsung LCD TV, Aft Stateroom – Sat TV Fusion MS-IP700 Stereo System, Bridge Bridge Speakers **Mechanical** (2) Crusader Captain's Choice 8.1 HO 425Hp Gas Engines, (820hrs March 2020) Port and Starboard Risers, (2018) Port and Starboard Oil Coolers, (2018) Port and Starboard Engines Annual Service – Oil, Filters, Impellers Starboard Transmission, (2018) Kohler 8Kw Gas Generator, (737hrs March 2010) Generator Annual Service – Oil, Filters, Impellers Jabsco Spotlight with remote at helm, 12V (2) VacUFlush Freshwater Marine Heads, (2013) (2) Marine Air AC/Heat System, 2 Zones, (2013) EuroKera 3 Burner Stove Top with Oven, 110V, (2012) Coffee Maker, (2012) Panasonic Microwave, (2012) Vitrifrigo Refrigerator and Freezer, (2012) Central Vacuum Atwood Hotwater Heater 10.5 Gallons Windlass with Remote at helm, 12V Cutlass Bearing and Stuffing Boxes, (2013) **Additional** Vetus Bow Thruster, 12V Canvas Enclosure with Strata Glass, (2017) Sun Pad on foredeck Interior Upholstery and soft goods, (2016) FlexSteel Pull Out Sleeper Sofa, (2017) Exterior Upholstery and soft goods, (2016) Carpet Cover, (2016) Carpet, (2009) Galley Sole (2012) Salon Table with lowering support, (2013) Docklines Fenders USCG Standard Safety Package CO Monitor Dyson Cordless Vacuum Anchor Chain, 30ft Rode, 200ft Manufacturer Provided Description The Silverton 392 Motor Yacht, with its innovative SideWalk flybridge steps, offers much improvement in safety, space utilization, and mobility. Never before has going forward been so easy and so safe. High bulwarks, sturdy rails, and wide steps allow passengers to move easily all around the boat. The added benefit lies below in the gunnel to gunnel salon that rivals boats 10 feet longer. By opening up the salon, both full-width and full-length, owners can entertain, dine, or just relax in this truly spacious atmosphere. Fore and aft are equally sumptuous staterooms, and private heads with stall showers. Both staterooms even have standard innerspring mattresses for sleeping comfort.

Exclusions

Owner's personal belongings.

Disclaimer

The Company offers the details of this vessel or yacht in good faith but cannot guarantee or warrant the accuracy of this information nor warrant the condition of the vessel. A buyer should instruct his representatives, agents, or his surveyors, to investigate such details as the buyer desires validated. This vessel or yacht is offered subject to prior sale, price change, or withdrawal without notice.

PHOTOS

2



3



4



5



6



7



8



9



10



11



12



13



14



15



16



17



18



19



20



21



22



23



24



25



26



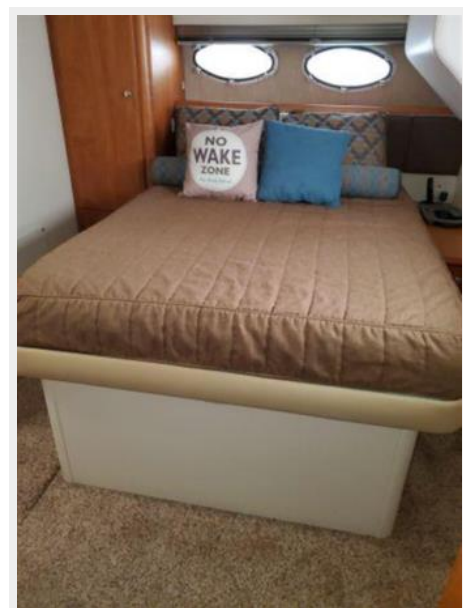
27



28



29



30



31



32



33



34



35



37



36



38



39



40



41



42



43



44



45



CONTACTS

Andrey Shestakov, leading yacht broker of the sales department of Shestakov Yacht Sales Inc. Shestakov Yacht Sales Inc., the official representative of the Miami/Fort Lauderdale FL headquarters.

Contact details

Email: andrey@shestakovyachtsales.com

Web: shestakovyachtsales.com/en/

Telephones

USA: +1(954)274-4435

Office hours

Monday – Saturday: **9:00 - 21:00** EDT

Sunday: **closed**

Address



Harbour Towne Marina, 850 NE 3rd St,
STE 213, Dania, FL 33004