

TRILOGY — BENFORD



Builder: BENFORD

Year Built: 1984

Model: Trawler Yacht

Price: PRICE ON APPLICATION

Location: United States

LOA: 38' 0" (11.58m)

Beam: 14' 0" (4.27m)

Max Draft: 4' 6" (1.37m)

Cruise Speed: 10 Kts. (12 MPH)

Our experienced yacht broker, Andrey Shestakov, will help you choose and buy a yacht that best suits your needs **Trilogy — BENFORD** from our catalogue. Presently, at Shestakov Yacht Sales Inc., we have a wide variety of yachts available on our sale's list. We also work in close contact with all the big yacht manufacturers from all over the world.

If you would like to buy a yacht **Trilogy — BENFORD** or would like help answering any questions concerning purchasing, selling or chartering a yacht, please call **+1(954)274-4435**

TABLE OF CONTENTS

TABLE OF CONTENTS	2
SPECIFICATIONS	5
Overview	5
Basic Information	5
Dimensions	5
Speed, Capacities and Weight	5
Accommodations	6
Hull and Deck Information	6
Engine Information	6
DETAILED INFORMATION	7
Overview	7
Exclusions	9
Disclaimer	9
PHOTOS	10
2	10
3	10
5	10
4	10
6	10
7	10
9	11
8	11
10	11
11	11
12	11
13	11
15	12
14	12

16	12
17	12
19	12
18	12
20	13
21	13
23	13
22	13
24	14
25	14
26	14
27	14
28	15
29	15
30	15
31	15
32	16
33	16
34	16
35	16
36	16
37	16
38	17
39	17
40	17
41	17
42	17
43	17
45	18

44	18
46	18
47	18
48	19
49	19
50	19
51	19
52	20
53	20
54	20
55	20
56	21
57	21
58	21
59	21
60	22
61	22
62	22
63	22
64	22
65	22
66	23
67	23
68	23
CONTACTS	24
Contact details	24
Telephones	24
Office hours	24
Address	24

SPECIFICATIONS

Overview

*This listing is available for virtual and in person tours, please contact the listing broker to schedule an appointment*Trilogy is a 38 Pilothouse Tug Cruiser designed by Jay Benford and built by Cape-Bay Shipbuilders. Her owners have been maintaining her meticulously over the last 18 years. She is one of the most charming designs with an interior that is very attractively finished in varnished hardwoods. Equipped with a 100 HP Westerbeke diesel and a Westerbeke 8 kw generator, both with very low hours. Her layout is ideal for a couple or family looking to cruise. Please be sure to review the Owner's Remarks, Full Specifications and Photo Gallery. A recent survey is available upon request. Currently under framed winter cover and available for inspection. Viewings available by appointment.

Basic Information

Category: Trawler Yacht

Sub Category: Tug

Model Year: 1984

Year Built: 1984

Country: United States

Dimensions

LOA: 38' 0" (11.58m)

Beam: 14' 0" (4.27m)

Max Draft: 4' 6" (1.37m)

MFG Length: 38' 0" (11.58m)

Speed, Capacities and Weight

Cruise Speed: 10 Kts. (12 MPH)

Displacement: 23000 Pounds

Water Capacity: 100 Gallons

Holding Tank: 60 Gallons

Fuel Capacity: 100 Gallons

Accommodations

Total Cabins: 2

Total Heads: 1

Hull and Deck Information

Hull Material: Fiberglass

Hull Finish: Stainless Steel

Engine Information

Engines: 1

Manufacturer: westerbeke

Model: W100

Engine Type: Inboard

Fuel Type: Diesel

DETAILED INFORMATION

Overview

Owner's Remarks We have enjoyed Trilogy as a summer home for 18 years, traveling the New England coast, NYS and VT waterways, St Lawrence R. to Montreal. She is one of just four Benford-design tugs, built-outfitted as an authentic tug (with two sister ships that are hard-working boats). Trilogy's first owner chose to finish her as a 'tug-yacht' for family use, although she has easily reverted to a working vessel when needed to help a stranded mariner. (She has hauled many boats as big as she, and even assisted evacuating passengers on a stranded tall ship.) She is a stable, seaworthy and reliable vessel, with a quiet engine that brings her respectfully into intimate anchorages. The generator, windlass, wind turbine, heat and AC, as well as large capacity fuel and water tanks, add to overall self-sufficiency for traveling. She carries a fire hose! Of particular function has been a large engine room space for two people to work together with access from fore and aft staircases. There is direct access to 2 water tanks to oversee maintenance and winterization. Trilogy's deep built-down keel and modest freeboard function for maneuvering and boarding. Her wheelhouse visibility is key for traveling, docking and in-door comfort in bad weather. Trilogy accommodates large gatherings (two wedding parties, family reunions, and many beach day events for adults and children). Her wide inclusive deck, handrails, and high gunnel offer security for all passengers. Trilogy's interior is paneled throughout with teak, ash and cedar, which creates a warm atmosphere. Two private double cabins (with cedar-lined lockers and dresser drawers) plus the adjustable wheelhouse salon table provide overnights for 6/+ as well as traveling comfort with ample storage—especially for a trip with a guest couple. Safety provisions for small children are in place. The galley is fully equipped and spacious so several crew can prepare meals for a boatload of guests. The head, with full shower, is centrally located for easy access from fore and aft cabins and galley. The hatches and large portholes keep all areas below deck cool, ventilated and well-lit in summer. The wheelhouse roof has been the storage area for kayaks, a rowing boat, and other all-weather belongings and equipment, helping to keep passageways and decks clear. Very generous additional storage spaces below fore and aft bunks for non-perishable provisions and amenities, and the easily accessible space inside the stack for compressors, many life jacks, beach toys and gear contribute to Trilogy's overall self-sufficiency for living onboard. Trilogy's spacious aft cockpit seats up to eight, has room for multiple fishing/trolling stations, and with it's moulded diamond plate deck and ample scuppers, provides secure footing and efficient draining of water taken onboard in foul weather. Trilogy is a fully efficient family vessel. Trilogy has many years in her future with unlimited adventurous traveling.

- Accommodations
- Cabin AC/Heat
 - Hot - Cold Water System
 - Vacuflush Head - Full Shower
 - Full Galley - Double s/s Sink

- Norcold Refrigerator & Freezer
- GE Microwave
- Origo 3000 Alcohol Stove
- Master Cabin Aft - Double
- Fwd Cabin - Double
- Wheelhouse -Dining Area and convertible to Double

Navigational Equipment

- Furuno Navnet VX2
- Furuno Radar
- Autohelm 6000 Autopilot
- ICOM IC-M407 & 502 VHF Radios
- ICOM MA-500 TR AIS
- Datamarine Dart Depth/Speed/Log
- Datamarine Wind Indicator
- Danforth Constellation Compass
- Multiple Air Horns and Whistle
- Navigational and Safety Lighting, Including Towing

Outfittings and Equipment

- Maxwell 1500 Electric Windlass — Anchor - Chain - Nylon Rode
- Bow Thruster — Full Rudder - 3 Blade Prop 27/21
- Fire Hose and Pump
- Fully Functional Towing Bitt
- Heavy Duty Rub Rail
- Port and Starboard Swim ladder access
- Aft Deck Boom Lift
- Propane Outboard Grill
- Aft Deck Wash Down Shower
- Aft Deck Raw Water Faucet
- Aft deck Lazarette Storage
- Forward Deck Fresh and Raw Water Faucets
- Multiple Hawse Pipes and Cleats

Electrical Systems AC Power:

- Two 30AMP Receptacles with two panels
- AC Amp and Voltage Meters
- Battery Charger - Professional Mariner Pro 40

Generator:

- Westerbeke 8KW Diesel Generator - 1,246 hours 1/6/2020
- Wind Generator

DC Power:

- 4 6V House Batteries (2016)
- 1 Group 31 Start Battery (2015)
- Cobra CPI 45 Inverter

Cruising Information

- Cruising Speed: 9-10 knots
- Cruising Speed RPM: 1900
- Fuel Consumption at 1900 - 1.5 GPH

Exclusions

Owner's personal belongings.

Disclaimer

The Company offers the details of this vessel or yacht in good faith but cannot guarantee or warrant the accuracy of this information nor warrant the condition of the vessel. A buyer should instruct his representatives, agents, or his surveyors, to investigate such details as the buyer desires validated. This vessel or yacht is offered subject to prior sale, price change, or withdrawal without notice.

PHOTOS

2



3



4



5



6



7



8



9



10



11



12



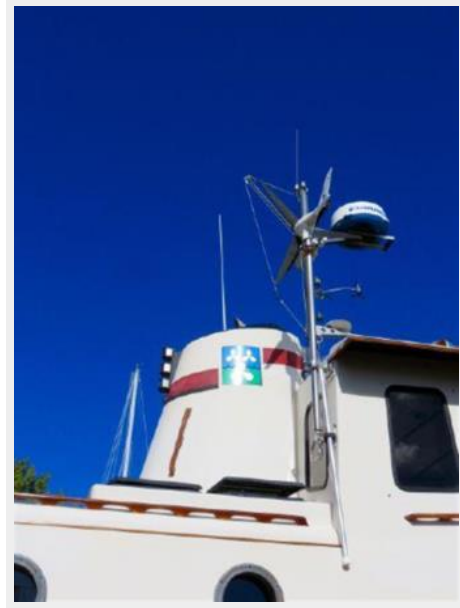
13



14



15



16



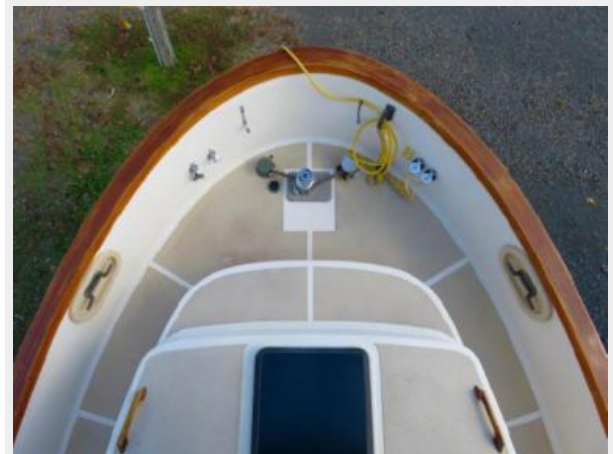
17



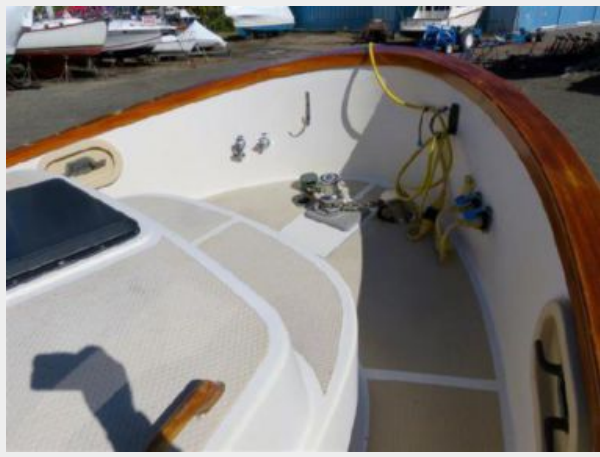
18



19



20



21



22



23



24



25



26



27



28



29



30



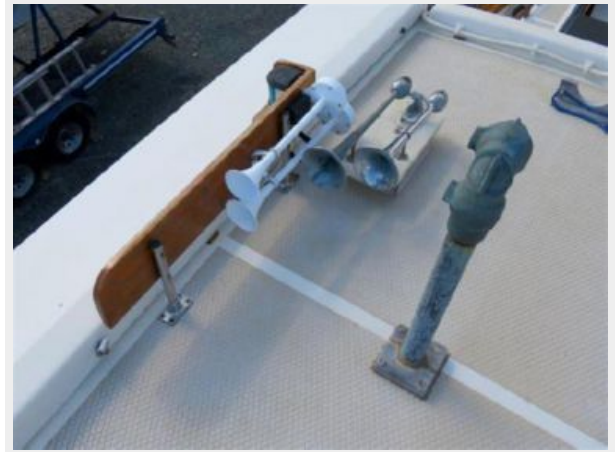
31



32



33



34



35



36



37



38



39



40



41



42



43



44



45



46



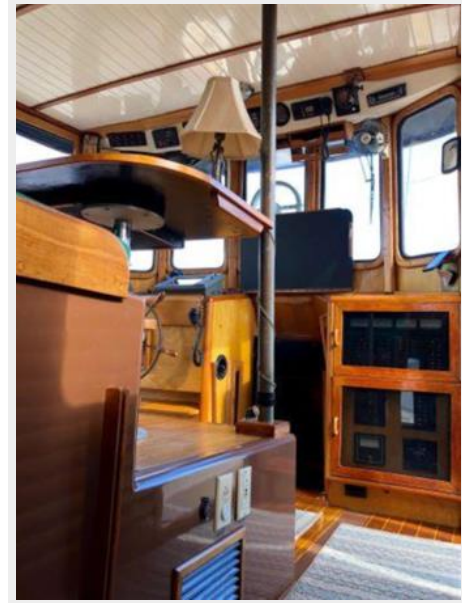
47



48



49



50



51



52



53



54



55



56



57



58



59



60



61



62



63



64



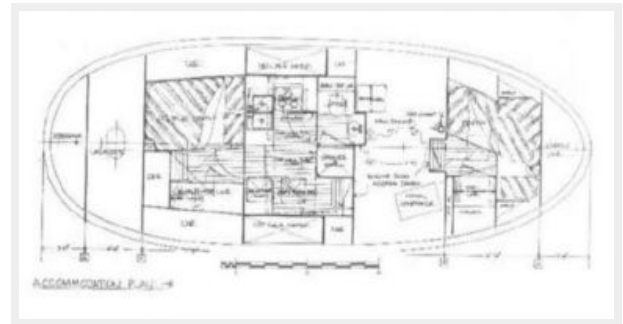
65



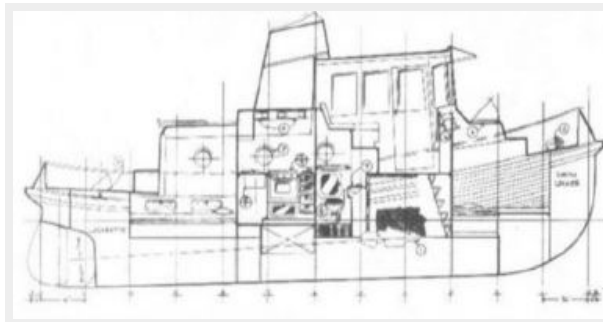
66



67



68



CONTACTS

Andrey Shestakov, leading yacht broker of the sales department of Shestakov Yacht Sales Inc. Shestakov Yacht Sales Inc., the official representative of the Miami/Fort Lauderdale FL headquarters.

Contact details

Email: andrey@shestakovyachtsales.com

Web: shestakovyachtsales.com/en/

Telephones

USA: +1(954)274-4435

Office hours

Monday – Saturday: **9:00 - 21:00** EDT

Sunday: **closed**

Address



Harbour Towne Marina, 850 NE 3rd St,
STE 213, Dania, FL 33004