

TRILOGY — BENFORD



Судостроитель: [BENFORD](#)

Год постройки: 1984

Модель: Trawler Yacht

Цена: ЦЕНА ЯХТЫ ПО ЗАПРОСУ

Местонахождение: United States

Длина общая: 38' 0" (11.58m)

Ширина: 14' 0" (4.27m)

Макс. осадка: 4' 6" (1.37m)

Крейс. скорость: 10 Kts. (12 MPH)

Купить **Trilogy — BENFORD** а также выбрать подходящую вам яхту из нашего каталога яхт вам поможет опытный яхтенный брокер Андрей Шестаков. На сегодняшний день компания **Shestakov Yacht Sales Inc.** имеет большое количество яхт в собственном списке продаж, а также тесно сотрудничает со всеми крупными яхтенными производителями по всему миру.

Для того чтобы купить яхту **Trilogy — BENFORD** а также проконсультироваться по любому вопросу связанному с покупкой, продажей, чартером яхт позвоните по телефону **+7(918)465-66-44**.

ОГЛАВЛЕНИЕ

ОГЛАВЛЕНИЕ	2
ХАРАКТЕРИСТИКИ	5
Обзор	5
Основная информация	5
Размеры	5
Скорость, вместимость и масса	5
Размещение	6
Корпус и палуба	6
Информация о двигателе	6
ПОДРОБНОЕ ОПИСАНИЕ	7
Overview	7
Исключения	9
Отказ от ответственности	9
ФОТОГРАФИИ	10
2	10
3	10
5	10
4	10
6	10
7	10
9	11
8	11
10	11
11	11
12	11
13	11
15	12
14	12

16	12
17	12
19	12
18	12
20	13
21	13
23	13
22	13
24	14
25	14
26	14
27	14
28	15
29	15
30	15
31	15
32	16
33	16
34	16
35	16
36	16
37	16
38	17
39	17
40	17
41	17
42	17
43	17
45	18

44	18
46	18
47	18
48	19
49	19
50	19
51	19
52	20
53	20
54	20
55	20
56	21
57	21
58	21
59	21
60	22
61	22
62	22
63	22
64	22
65	22
66	23
67	23
68	23
КОНТАКТЫ	24
Контактная информация	24
Телефоны	24
Время работы	24
Адрес	24

ХАРАКТЕРИСТИКИ

Обзор

*This listing is available for virtual and in person tours, please contact the listing broker to schedule an appointment*Trilogy is a 38 Pilothouse Tug Cruiser designed by Jay Benford and built by Cape-Bay Shipbuilders. Her owners have been maintaining her meticulously over the last 18 years. She is one of the most charming designs with an interior that is very attractively finished in varnished hardwoods. Equipped with a 100 HP Westerbeke diesel and a Westerbeke 8 kw generator, both with very low hours. Her layout is ideal for a couple or family looking to cruise. Please be sure to review the Owner's Remarks, Full Specifications and Photo Gallery. A recent survey is available upon request. Currently under framed winter cover and available for inspection. Viewings available by appointment.

Основная информация

Тип судна: Trawler Yacht

Подкатегория: Tug

Модельный год: 1984

Год постройки: 1984

Страна: United States

Размеры

Длина общая: 38' 0" (11.58m)

Ширина: 14' 0" (4.27m)

Макс. осадка: 4' 6" (1.37m)

Длина привального бруса: 38' 0" (11.58m)

Скорость, вместимость и масса

Крейс. скорость: 10 Kts. (12 MPH)

Водоизмещение: 23000 Pounds

Вместимость воды: 100 Gallons

Вместимость сточного бака: 60 Gallons

Объем топливного бака: 100 Gallons

Размещение

Всего кают: 2

Всего ком. состава: 1

Корпус и палуба

Материал корпуса: Fiberglass

Отделка корпуса: Stainless Steel

Информация о двигателе

Двигатели: 1

Производитель: westerbeke

Модель: W100

Тип двигателя: Inboard

Тип топлива: Diesel

ПОДРОБНОЕ ОПИСАНИЕ

Overview

Owner's Remarks We have enjoyed Trilogy as a summer home for 18 years, traveling the New England coast, NYS and VT waterways, St Lawrence R. to Montreal. She is one of just four Benford-design tugs, built-outfitted as an authentic tug (with two sister ships that are hard-working boats). Trilogy's first owner chose to finish her as a 'tug-yacht' for family use, although she has easily reverted to a working vessel when needed to help a stranded mariner. (She has hauled many boats as big as she, and even assisted evacuating passengers on a stranded tall ship.) She is a stable, seaworthy and reliable vessel, with a quiet engine that brings her respectfully into intimate anchorages. The generator, windlass, wind turbine, heat and AC, as well as large capacity fuel and water tanks, add to overall self-sufficiency for traveling. She carries a fire hose! Of particular function has been a large engine room space for two people to work together with access from fore and aft staircases. There is direct access to 2 water tanks to oversee maintenance and winterization. Trilogy's deep built-down keel and modest freeboard function for maneuvering and boarding. Her wheelhouse visibility is key for traveling, docking and in-door comfort in bad weather. Trilogy accommodates large gatherings (two wedding parties, family reunions, and many beach day events for adults and children). Her wide inclusive deck, handrails, and high gunnel offer security for all passengers. Trilogy's interior is paneled throughout with teak, ash and cedar, which creates a warm atmosphere. Two private double cabins (with cedar-lined lockers and dresser drawers) plus the adjustable wheelhouse salon table provide overnights for 6/+ as well as traveling comfort with ample storage—especially for a trip with a guest couple. Safety provisions for small children are in place. The galley is fully equipped and spacious so several crew can prepare meals for a boatload of guests. The head, with full shower, is centrally located for easy access from fore and aft cabins and galley. The hatches and large portholes keep all areas below deck cool, ventilated and well-lit in summer. The wheelhouse roof has been the storage area for kayaks, a rowing boat, and other all-weather belongings and equipment, helping to keep passageways and decks clear. Very generous additional storage spaces below fore and aft bunks for non-perishable provisions and amenities, and the easily accessible space inside the stack for compressors, many life jacks, beach toys and gear contribute to Trilogy's overall self-sufficiency for living onboard. Trilogy's spacious aft cockpit seats up to eight, has room for multiple fishing/trolling stations, and with it's moulded diamond plate deck and ample scuppers, provides secure footing and efficient draining of water taken onboard in foul weather. Trilogy is a fully efficient family vessel. Trilogy has many years in her future with unlimited adventurous traveling.

Accommodations

- Cabin AC/Heat
- Hot - Cold Water System
- Vacuflush Head - Full Shower
- Full Galley - Double s/s Sink

- Norcold Refrigerator & Freezer
- GE Microwave
- Origo 3000 Alcohol Stove
- Master Cabin Aft - Double
- Fwd Cabin - Double
- Wheelhouse -Dining Area and convertible to Double

Navigational Equipment

- Furuno Navnet VX2
- Furuno Radar
- Autohelm 6000 Autopilot
- ICOM IC-M407 & 502 VHF Radios
- ICOM MA-500 TR AIS
- Datamarine Dart Depth/Speed/Log
- Datamarine Wind Indicator
- Danforth Constellation Compass
- Multiple Air Horns and Whistle
- Navigational and Safety Lighting, Including Towing

Outfittings and Equipment

- Maxwell 1500 Electric Windlass — Anchor - Chain - Nylon Rode
- Bow Thruster — Full Rudder - 3 Blade Prop 27/21
- Fire Hose and Pump
- Fully Functional Towing Bitt
- Heavy Duty Rub Rail
- Port and Starboard Swim ladder access
- Aft Deck Boom Lift
- Propane Outboard Grill
- Aft Deck Wash Down Shower
- Aft Deck Raw Water Faucet
- Aft deck Lazarette Storage
- Forward Deck Fresh and Raw Water Faucets
- Multiple Hawse Pipes and Cleats

Electrical Systems AC Power:

- Two 30AMP Receptacles with two panels
- AC Amp and Voltage Meters
- Battery Charger - Professional Mariner Pro 40

Generator:

- Westerbeke 8KW Diesel Generator - 1,246 hours 1/6/2020
- Wind Generator

DC Power:

- 4 6V House Batteries (2016)
- 1 Group 31 Start Battery (2015)
- Cobra CPI 45 Inverter

Cruising Information

- Cruising Speed: 9-10 knots
- Cruising Speed RPM: 1900
- Fuel Consumption at 1900 - 1.5 GPH

Исключения

При продаже яхты исключаются личные вещи владельца.

Отказ от ответственности

Компания предоставляет описание судна или яхты добросовестно, но не может гарантировать точность этой информации, а также не ручается за техническое состояние. Покупатель должен проинструктировать своих агентов или оценщиков исследовать представленную информацию более подробно, по собственному желанию. Продажа судна или яхты, изменение цены или снятие с продажи будет происходить без предварительного уведомления.

ФОТОГРАФИИ

2



3



4



5



6



7



8



9



10



11



12



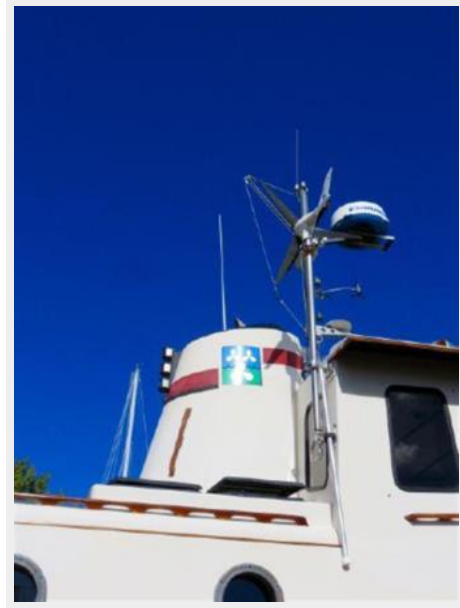
13



14



15



16



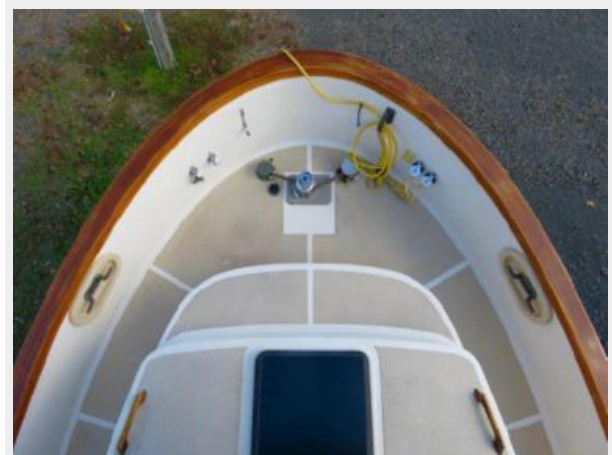
17



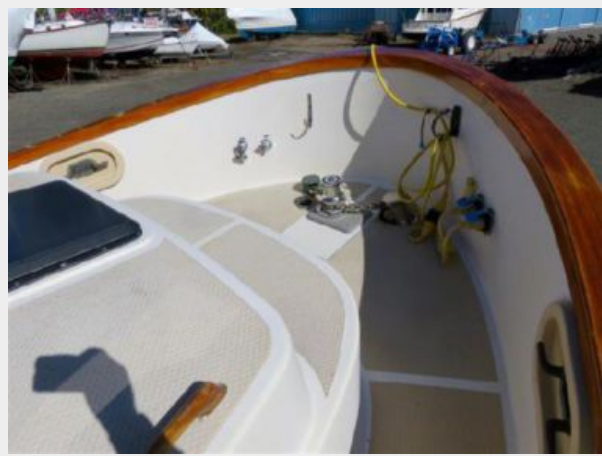
18



19



20



21



22



23



24



25



26



27



28



29



30



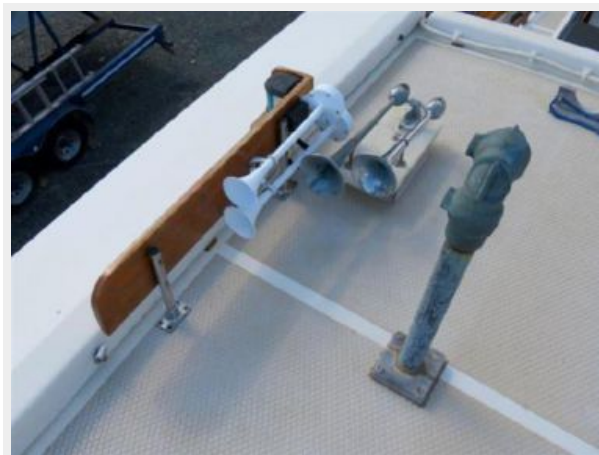
31



32



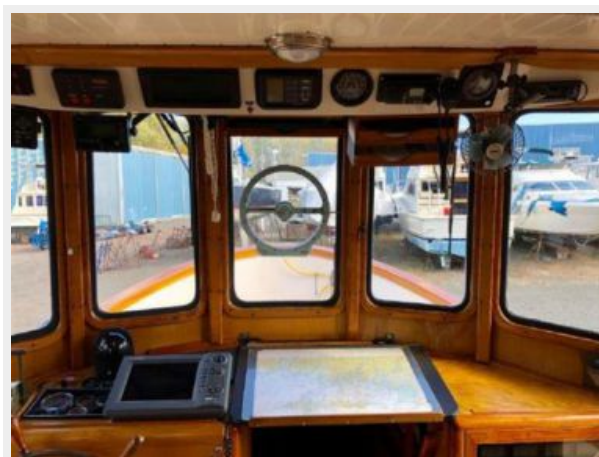
33



34



35



36



37



38



39



40



41



42



43



44



45



46



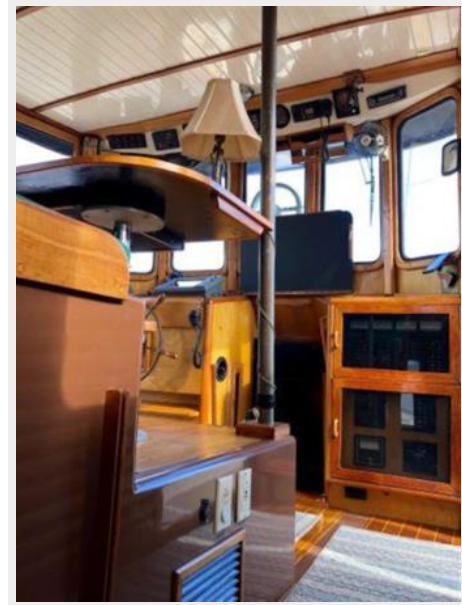
47



48



49



50



51



52



53



54



55



56



57



58



59



60



61



62



63



64



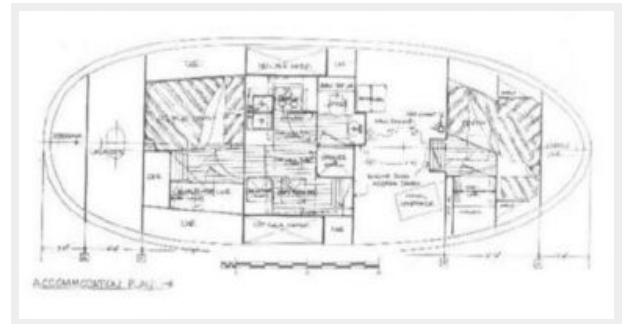
65



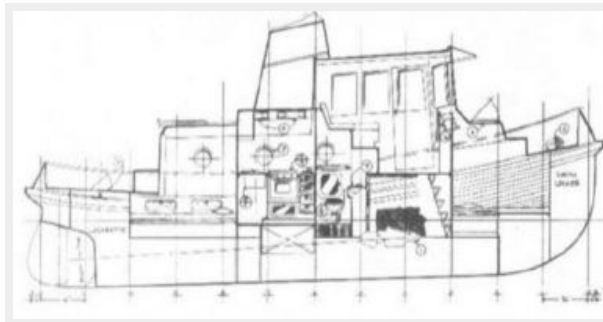
66



67



68



КОНТАКТЫ

Андрей Шестаков (Andrey Shestakov) – ведущий яхтенный брокер отдела продаж яхт и судов компании Shestakov Yacht Sales Inc. Официальный представитель Shestakov Yacht Sales Inc. для русскоговорящих клиентов в центральном офисе компании в Майами/Форт Лодердейл/Флорида/США.

Контактная информация

Email: andrey@shestakovyachtsales.com

Web: shestakovyachtsales.com

Телефоны

Краснодарский край: **+7(918)465-66-44**

США, Майами, Флорида: **+1(954)274-4435**

Время работы

Понедельник – Суббота: **9:00 - 21:00**
EDT

Воскресенье: **Закрито**

Адрес



Harbour Towne Marina, 850 NE 3rd St,
STE 213, Dania, FL 33004