

## TITAN — SILVERTON



**Builder:** SILVERTON

**Year Built:** 2007

**Model:** Sport Yacht

**Price:** PRICE ON APPLICATION

**Location:** United States

**LOA:** 32' 5" (9.88m)

**Beam:** 12' 8" (3.86m)

**Max Draft:** 2' 7" (0.79m)

Our experienced yacht broker, Andrey Shestakov, will help you choose and buy a yacht that best suits your needs Titan — SILVERTON from our catalogue. Presently, at Shestakov Yacht Sales Inc., we have a wide variety of yachts available on our sale's list. We also work in close contact with all the big yacht manufacturers from all over the world.

If you would like to buy a yacht Titan — SILVERTON or would like help answering any questions concerning purchasing, selling or chartering a yacht, please call +1(954)274-4435

# TABLE OF CONTENTS

|                              |    |
|------------------------------|----|
| TABLE OF CONTENTS            | 2  |
| SPECIFICATIONS               | 5  |
| Overview                     | 5  |
| Basic Information            | 5  |
| Dimensions                   | 5  |
| Speed, Capacities and Weight | 5  |
| Accommodations               | 5  |
| Hull and Deck Information    | 6  |
| Engine Information           | 6  |
| DETAILED INFORMATION         | 7  |
| Overview                     | 7  |
| Exclusions                   | 7  |
| Disclaimer                   | 7  |
| PHOTOS                       | 8  |
| 2                            | 8  |
| 3                            | 8  |
| 4                            | 8  |
| 5                            | 8  |
| 6                            | 8  |
| 7                            | 8  |
| 8                            | 9  |
| 9                            | 9  |
| 11                           | 9  |
| 10                           | 9  |
| 12                           | 9  |
| 13                           | 9  |
| 14                           | 10 |
| 15                           | 10 |

---

|                 |    |
|-----------------|----|
| 16              | 10 |
| 17              | 10 |
| 19              | 10 |
| 18              | 10 |
| 20              | 11 |
| 21              | 11 |
| 23              | 11 |
| 22              | 11 |
| 25              | 12 |
| 24              | 12 |
| 26              | 12 |
| 27              | 12 |
| 29              | 13 |
| 28              | 13 |
| 30              | 13 |
| 31              | 13 |
| 32              | 14 |
| 33              | 14 |
| 35              | 14 |
| 34              | 14 |
| 36              | 15 |
| 37              | 15 |
| 38              | 15 |
| 39              | 15 |
| CONTACTS        | 16 |
| Contact details | 16 |
| Telephones      | 16 |
| Office hours    | 16 |
| Address         | 16 |

---



---

# SPECIFICATIONS

---

## Overview

---

\*This listing is available for virtual and in person tours, please contact the listing broker to schedule an appointment\* Titan is a 2007 Silverton 33 Convertible. She is very clean and shows well. Her original owners have cared for her through the years and it shows. She has been in the Northeast her entire life and have been upgraded regularly. She features twin 375Hp gas engines, Kohler 5kw generator, two zone AC/Heat system, Garmin Chartplotter with High Def Radar, and a great entertainment systems through out the boat. She has big boat accommodations and equipment that gives everyone space with comfort.

## Basic Information

---

**Category:** Sport Yacht

**Sub Category:** Convertible

**Model Year:** 2007

**Year Built:** 2007

**Country:** United States

## Dimensions

---

**LOA:** 32' 5" (9.88m)

**Beam:** 12' 8" (3.86m)

**Max Draft:** 2' 7" (0.79m)

**Clearance:** 12' 1" (3.68m)

## Speed, Capacities and Weight

---

**Displacement:** 16800 Pounds

**Water Capacity:** 82 Gallons

**Holding Tank:** 30 Gallons

**Fuel Capacity:** 208 Gallons

## Accommodations

---

**Total Cabins:** 2

**Total Heads:** 1

---

## Hull and Deck Information

---

**Hull Material:** Fiberglass

**Hull Configuration:** Semi-Displacement

---

## Engine Information

---

**Engines:** 2

**Manufacturer:** Crusader

**Model:** 6.0 MPI

**Engine Type:** Inboard

**Fuel Type:** Gas

# DETAILED INFORMATION

## Overview

**Electrical** 30 Amp Inlet – House 30 Amp Inlet – AC/Heat 110V Breaker Panel 12V Breaker Panel 110V Outlets 12V Outlets 12V Lighting 12V USCG Navigation Lights 12V Bilge Pump 12V Cockpit Lighting 12V Saltwater Washdown Pump 12V Freshwater Pump 12V Macerator (3) Interstate Deep Cycle Batteries (2 Replaced July 2019) Charles 30 Amp Battery Charger

**Electronics** Flybridge: Garmin 3210 Chartplotter Garmin High Def Radar Dome Raymarine Tridata Raymarine Ray 215 VHF Standard Horizon VLH-3000 Hailer Faria Fuel/Oil Pressure/Voltage/Temp Gauge, Port Faria Fuel/Oil Pressure/Voltage/Temp Gauge, Stbd Faria RPMs/Hours Gauge, Port Faria RPMs/Hours Gauge, Stbd Dual AM/FM/USB/AUX Stereo (2) Flybridge Speakers Ritchie Magnetic Compass Salon: TCL Roku LVD TV Glomex TV Antenna Dual MXR4Z AM/FM/MP3 Stereo (2) Salon Speakers (2) Cockpit Speakers Master Stateroom: Sole LCD TV Sole AM/FM/CD/DVD Stereo (2) Master Stateroom Sony Speakers

**Mechanical** Twin Crusader 6.0 MPI 375Hp Gas Engines, (775hrs January 2020) Risers, (2014) & Work Order Pending for Spring (2020) Kohler 5Kw Generator - Gas, (77hrs January 2020) 2 Zone Marine Air AC/Heat System Norcold Refrigerator Princess 1 Burner Stove Top, 110V Tappan 110V Microwave Jabsco Marine Head, 12V Oil Exchange System City Water Hook Up 12V Jabsco Search Light (2) Safe-T-Alert SA-10XC Fume Detector Maxwell Windlass, 12V Maxwell Trim Tabs

**Additional** Gioia Canvas Flybridge Enclosure Cockpit Shower Pull Out Sleeper Couch Custom Flybridge Stairs Hatch Dripless Shaft Logs Port/Stbd Sea Fire Engineroom Fire Suppression System Window Tint – (2008) Hurley Dinghy Davits Carpet – Flybridge Carpet – Salon Carpet Canvas Cover - Salon Anchor Chain Rode Fenders Docklines Bottom Paint & Zincs, May 2019

## Exclusions

Owner's personal belongings.

## Disclaimer

The Company offers the details of this vessel or yacht in good faith but cannot guarantee or warrant the accuracy of this information nor warrant the condition of the vessel. A buyer should instruct his representatives, agents, or his surveyors, to investigate such details as the buyer desires validated. This vessel or yacht is offered subject to prior sale, price change, or withdrawal without notice.

# PHOTOS

2



3



4



5



6



7





8



9



10



11



12



13



14



15



16



17



19

18



20



21



22



23





24



25



26



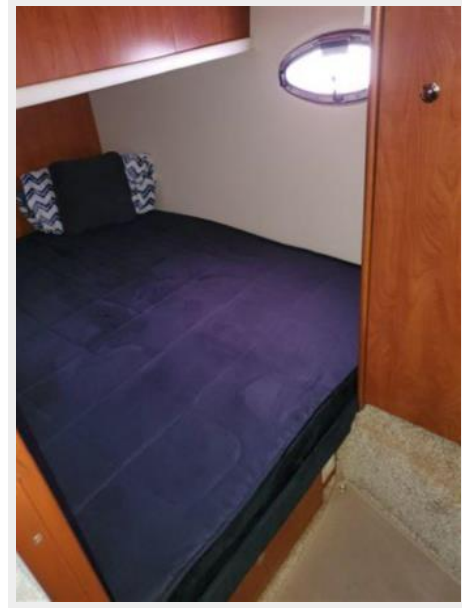
27



28



29



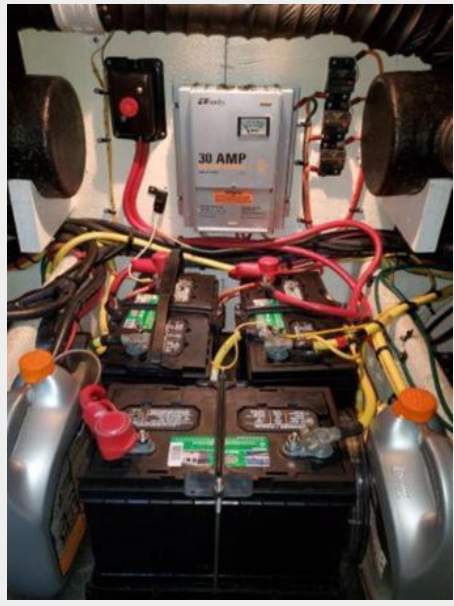
30



31



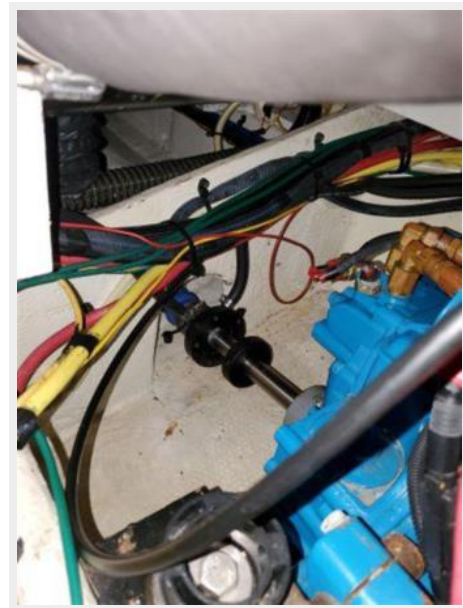
32



33



35

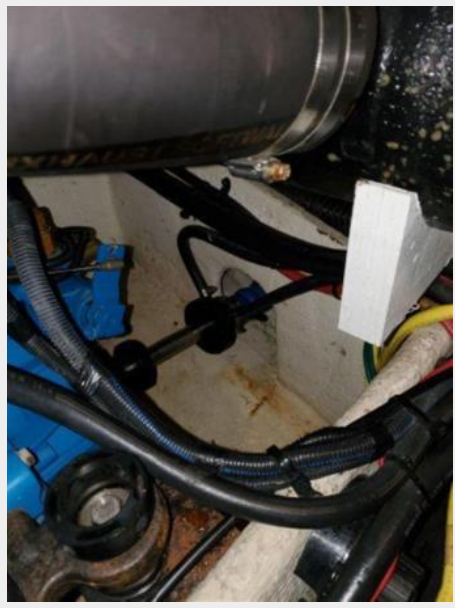


34





36



37



38



39



# CONTACTS

---

Andrey Shestakov, leading yacht broker of the sales department of Shestakov Yacht Sales Inc. Shestakov Yacht Sales Inc., the official representative of the Miami/Fort Lauderdale FL headquarters.

## Contact details

---

Email: [andrey@shestakovyachtsales.com](mailto:andrey@shestakovyachtsales.com)

Web: [shestakovyachtsales.com/en/](http://shestakovyachtsales.com/en/)

## Telephones

---

USA: +1(954)274-4435

## Office hours

---

Monday – Saturday: **9:00 - 21:00** EDT

Sunday: **closed**

## Address

---



Harbour Towne Marina, 850 NE 3rd St,  
STE 213, Dania, FL 33004