

## LUCKY LEMAIRE II — EVERGLADES



**Builder:** EVERGLADES

**Year Built:** 2011

**Model:** Boats

**Price:** PRICE ON APPLICATION

**Location:** United States

**LOA:** 32' 4" (9.86m)

**Beam:** 10' 8" (3.25m)

**Cruise Speed:** 30 Kts. (35 MPH)

**Max Speed:** 56 Kts. (64 MPH)

Our experienced yacht broker, Andrey Shestakov, will help you choose and buy a yacht that best suits your needs **Lucky Lemaire II — EVERGLADES** from our catalogue. Presently, at Shestakov Yacht Sales Inc., we have a wide variety of yachts available on our sale's list. We also work in close contact with all the big yacht manufacturers from all over the world.

If you would like to buy a yacht **Lucky Lemaire II — EVERGLADES** or would like help answering any questions concerning purchasing, selling or chartering a yacht, please call **+1(954)274-4435**

# TABLE OF CONTENTS

TABLE OF CONTENTS	2
SPECIFICATIONS	5
Overview	5
Basic Information	5
Dimensions	5
Speed, Capacities and Weight	5
Accommodations	6
Hull and Deck Information	6
Engine Information	6
DETAILED INFORMATION	7
Overview	7
Exclusions	8
Disclaimer	8
PHOTOS	9
3	9
2	9
5	9
4	9
6	10
7	10
8	10
9	10
10	11
11	11
12	11
13	11
14	11
15	11

---

16	12
17	12
18	12
19	12
20	13
21	13
22	13
23	13
24	14
25	14
26	14
27	14
29	15
28	15
30	15
31	15
32	16
33	16
34	16
35	16
36	17
37	17
38	17
39	17
40	18
41	18
42	18
43	18
44	19

---

45	19
46	19
47	19
48	20
49	20
50	20
51	20
52	21
CONTACTS	22
Contact details	22
Telephones	22
Office hours	22
Address	22

---

# SPECIFICATIONS

---

## Overview

---

'Lucky Lemaire II' is a 2011 325CC from Everglades, powered by twin Yamaha 350hp 4-stroke V8 engines with just 750 hours on them. Loaded with standard and optional features, including an extensive electronics package, dual 15" Garmin displays, Auto-pilot, radar, plotter, fish finder, and integrated engine data displays, and separate Yamaha engine systems LCD display.

Patented Everglades power sliding windshield and power forward table. Packed with fishing features including in-deck fish boxes, lighted live well, bait prep and tackle station, port-side utility door, and more. Ice blue hull color, spacious head and vanity/sink inside console, custom canvas wings at console, full cushion package with forward sun pad.

## Basic Information

---

**Category:** Boats

**Sub Category:** Center Console

**Model Year:** 2011

**Year Built:** 2011

**Country:** United States

## Dimensions

---

**LOA:** 32' 4" (9.86m)

**Beam:** 10' 8" (3.25m)

**MFG Length:** 32' 0" (9.75m)

## Speed, Capacities and Weight

---

**Cruise Speed:** 30 Kts. (35 MPH)

**Max Speed:** 56 Kts. (64 MPH)

**Displacement:** 9500 Pounds

**Water Capacity:** 35 Gallons

**Holding Tank:** 9 Gallons

**Fuel Capacity:** 306 Gallons

---

## Accommodations

---

**Total Heads:** 1

---

## Hull and Deck Information

---

**Hull Material:** Fiberglass

---

## Engine Information

---

**Engines:** 2

**Manufacturer:** Yamaha

**Model:** F350

**Engine Type:** Outboard

**Fuel Type:** Gas

# DETAILED INFORMATION

## Overview

**Construction** Unsinkable Lifetime hull warranty and 5 year stem-to-stern warranty Variable deadrise deep v-hull Patented closed molded RAMCAP® construction process NMMA Certified Self-bailing cockpit No wood construction High density, closed cell, structural foam floatation Hull laminate - premium gel coat, vinyl-ester barrier coat, vinyl-ester skin coat, polyester print barrier and knitted bi-axle fiberglass High density PVC composite transom Hull liner and deck mated perfectly for a rigid one-piece construction, adding to its long term durability Hull liner completely finished inside with Class A surface Molded-in diamond non-skid Rigging troughs - molded-in and oversized for easy access ABS backing used to receive self tapping screws and bolts Aluminum frame work - custom fabricated in house meeting stringent standards, sand blasted then powder coated using premium marine grade materials Gunwale boards - all hand laid and extra heavy duty Wire harnesses - manufactured in house using marine grade, tinned copper wire, high grade heat shrink connectors and waterproof deutschplugs Circuit protection - circuit breakers or fuses protect all electrical circuits Heavy-duty rub rail with 316 stainless steel insert and end caps 316 cast stainless steel and chrome plated fasteners for additional corrosion and stain resistance All hardware bedded or gasketed to resist corrosion Stainless steel hinges and latches Upholstery - extra heavy vinyl with acrylic top coat, Tenara™ thread, and anti-mildew backing - adhered to high density plastic backing (no wood) with flow through foam cushions Bonding zinc plate Heavy-duty, welded bow and stern eyes, bedded and sealed in polyurethane Bronze high speed intake strainers Transheild™ shipping cover Fuel Tank - 306 gal nominal baffled aluminum **Console / Hardtop** Console glove box/storage bin Console handrails Console power port 20A - 12VDC Stainless steel steering wheel Molded-in fiberglass footrest at the helm Fire extinguisher Tempered glass, hydraulic sliding windshield with intelligent wiper and washer system Stereo speakers mounted in the hard-top Fiberglass hardtop with aluminum powder-coated frame includes blue and white LED lights, spreader lights, electric sliding windshield, electronics box, (5) rod holders, a set of kingfish rod holders Seastar Optimus Electronic Power Steering China bowl head with macerator and holding tank Sink with shower in head Stainless steel drink holders (4) Canvas life jacket storage in hard top **Deck / Cockpit** 300ft 5/8 - 8PLAIT 15ft 5/16 chain with swivel and anchor Bow casting platform 10" pull-up cleats cast 316 stainless steel and through bolted (6) Blue and white LED courtesy lighting with 316 stainless steel bezels Stereo speakers mounted in the deck Stainless steel drink holders Recessed cockpit drains Cockpit coaming bolsters Retractable boarding ladder at transom with stainless steel grab rail Low profile aluminum powder-coated bow rails Powder-coated toe rails Raw-water sink with sprayer Electric bow filler table Side utility door that opens inboard Cockpit area - 118sf **Fishability** Circulating livewell with light and 3/8" clear acrylic lid with stainless steel friction hinges and latch - 34 gal Fish box (aft) - 81gal Fish box (fwd.) - 129gal Stainless steel gunwale flush mounted rod holders bedded and through bolted (4) Under gunwale power ports - 30A Under gunwale rod racks - (4) total, (2) on each side Lockable rod

storageCommand leaning post workstationTransom rod holders (5)King fish rod holdersOuttrigger package - 18' poles **Mechanical / Electrical**Automatic bilge pump(s)High-water alarmLED anchor lightLED navigation lightsLED docking lightsRitchie® compassElectric hornPre-wired battery charger 110VACCustom stainless steel trim tabs with position indicator and auto retract (dual cylinder)Underwater lights blue and white switchableStereo - Fusion control head with Bluetooth and JL M-series speakersFresh-water washdown spigotRaw-water washdown spigot

## Exclusions

---

Owner's personal belongings.

## Disclaimer

---

The Company offers the details of this vessel or yacht in good faith but cannot guarantee or warrant the accuracy of this information nor warrant the condition of the vessel. A buyer should instruct his representatives, agents, or his surveyors, to investigate such details as the buyer desires validated. This vessel or yacht is offered subject to prior sale, price change, or withdrawal without notice.



# PHOTOS

2



3



4



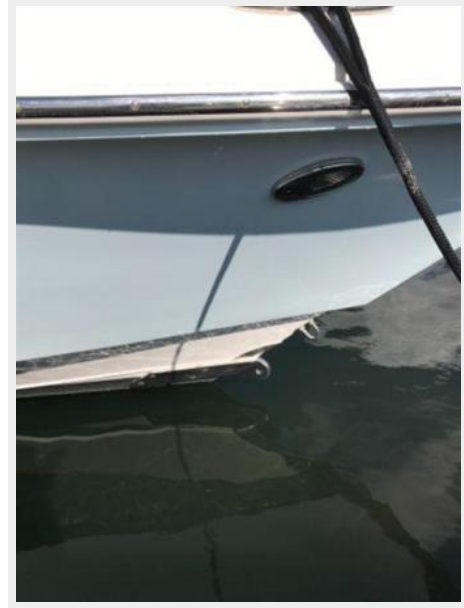
5



6



7



8



9



10



11



12



13



14



15



16



17



18



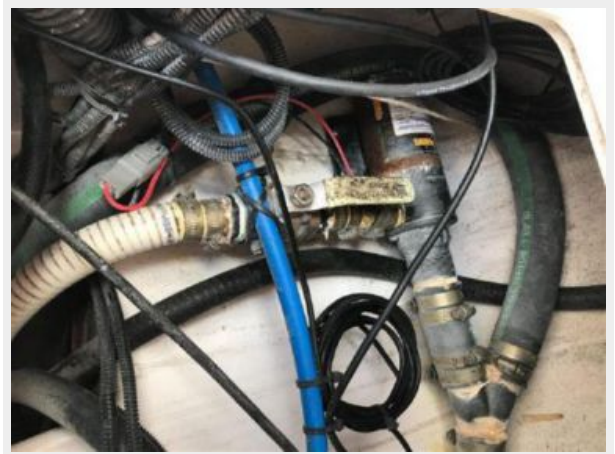
19



20



21



22



23



24



25



26



27



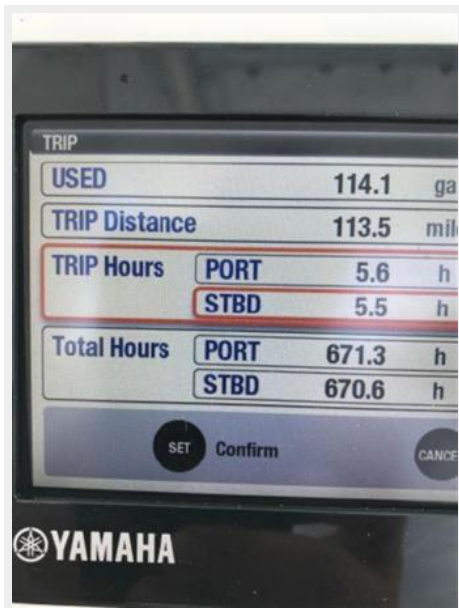
28



29



30



31



32



33



34



35





36



37



38



39



40



41



42



43



44



45



46



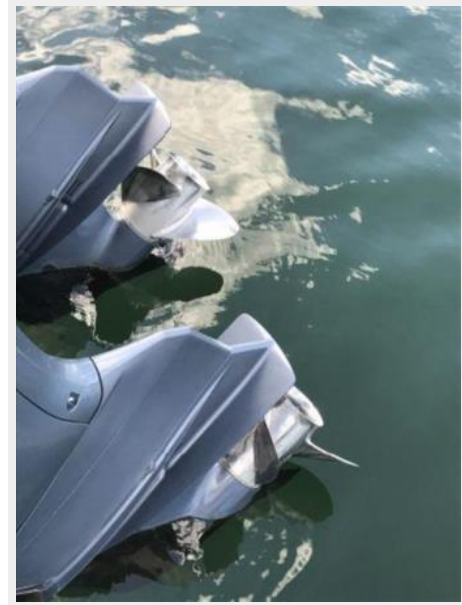
47



48



49



50



51



52



# CONTACTS

---

Andrey Shestakov, leading yacht broker of the sales department of Shestakov Yacht Sales Inc. Shestakov Yacht Sales Inc., the official representative of the Miami/Fort Lauderdale FL headquarters.

## Contact details

---

Email: [andrey@shestakovyachtsales.com](mailto:andrey@shestakovyachtsales.com)

Web: [shestakovyachtsales.com/en/](http://shestakovyachtsales.com/en/)

## Telephones

---

USA: +1(954)274-4435

## Office hours

---

Monday – Saturday: **9:00 - 21:00** EDT

Sunday: **closed**

## Address

---



Harbour Towne Marina, 850 NE 3rd St,  
STE 213, Dania, FL 33004