

2016 OCEAN ALEXANDER 100 SKYLOUNGE — OCEAN ALEXANDER



Builder: OCEAN ALEXANDER

Year Built: 2015

Model: Motor Yacht

Price: PRICE ON APPLICATION

LOA: 100' 2" (30.53mm)

Beam: 23

Min Draft: 5' 6" (1.68mm)

Max Draft: 6' 5" (1.96mm)

Cruise Speed: 16 Knots Kts. (18 MPH)

Max Speed: 24 Knots Kts. (28 MPH)

Our experienced yacht broker, Andrey Shestakov, will help you choose and buy a yacht that best suits your needs 2016 Ocean Alexander 100 Skylounge Sea N Sea — OCEAN ALEXANDER from our catalogue. Presently, at Shestakov Yacht Sales Inc., we have a wide variety of yachts available on our sale's list. We also work in close contact with all the big yacht manufacturers from all over the world.

If you would like to buy a yacht 2016 Ocean Alexander 100 Skylounge Sea N Sea — OCEAN ALEXANDER or would like help answering any questions concerning purchasing, selling or chartering a yacht, please call **+1(954)274-4435**

TABLE OF CONTENTS

TABLE OF CONTENTS	2
SPECIFICATIONS	3
Overview	3
Basic Information	3
Dimensions	3
Speed, Capacities and Weight	3
Accommodations	4
Hull and Deck Information	4
Engine Information	4
PHOTOS	5
CONTACTS	16
Contact details	16
Telephones	16
Office hours	16
Address	16

SPECIFICATIONS

Overview

Measurably larger than other yachts in its class, the 100 Skylounge is arguably the most spacious and luxurious entertaining spot you will find on the water. Sea N Sea features heated granite floors in the master bath, custom wood flooring in the salon, Crestron electronics, wireless Yacht Controller, and awnings for bow and flybridge seating area. Located in Miami, Sea N Sea is maintained by a full-time professional captain and crew.

Basic Information

Category: Motor Yacht

Sub Category: Mega Yacht

Model Year: 2016

Year Built: 2015

Dimensions

LOA: 100' 2" (30.53mm)

LWL: 87' 11" (26.8mm)

Beam: 23

Min Draft: 5' 6" (1.68mm)

Max Draft: 6' 5" (1.96mm)

Speed, Capacities and Weight

Cruise Speed: 16 Knots Kts. (18 MPH)

Max Speed: 24 Knots Kts. (28 MPH)

Max Speed Range: 517 Kts.

Water Capacity: 650 Gallons

Holding Tank: 200 Gal Gallons

Fuel Capacity: 4000 Gal Gallons

Accommodations

Total Cabins: 4

Total Berths: 10

Sleeps: 10

Total Heads: 6

Crew Cabin: 2

Crew Berths: 2

Crew Heads: 1

Hull and Deck Information

Hull Material: Fiberglass

Hull Color: WHITE

Interior Designer: Evan K Marshall

Engine Information

Engines: 2

Manufacturer: Caterpillar

Engine Type: Inboard

Fuel Type: Diesel

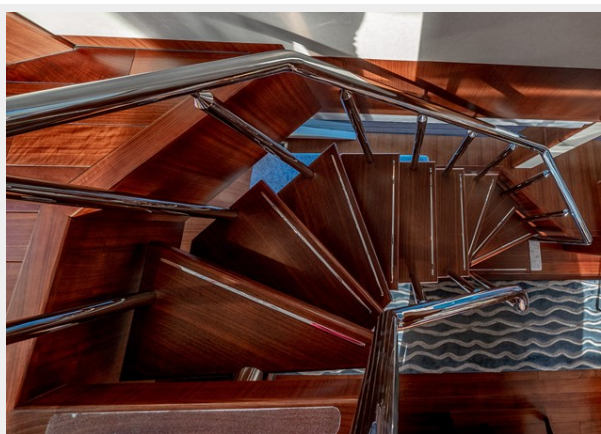
PHOTOS



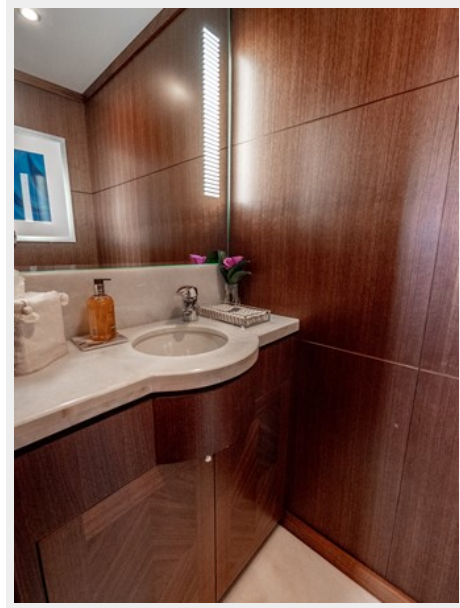




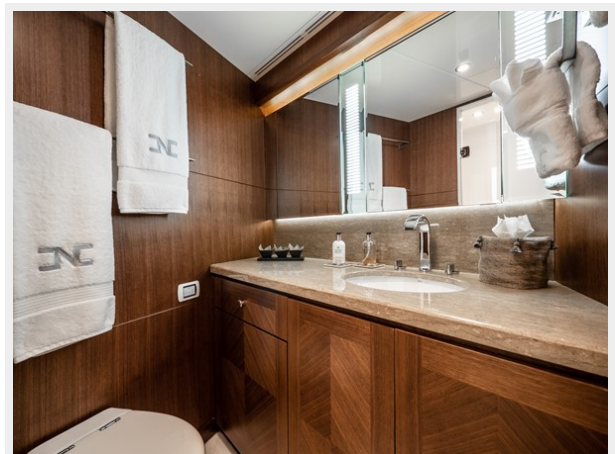
















CONTACTS

Andrey Shestakov, leading yacht broker of the sales department of Shestakov Yacht Sales Inc. Shestakov Yacht Sales Inc., the official representative of the Miami/Fort Lauderdale FL headquarters.

Contact details

Email: andrey@shestakovyachtsales.com

Web: shestakovyachtsales.com/en/

Telephones

USA: +1(954)274-4435

Office hours

Monday – Saturday: **9:00 - 21:00** EDT

Sunday: **closed**

Address



Harbour Towne Marina, 850 NE 3rd St,
STE 213, Dania, FL 33004