

NOETA — NIELSON



Builder: [Nielson](#)

Year Built: 1960

Model: Yawl

Price: PRICE ON APPLICATION

Location: United States

LOA: 30' 0" (9.14m)

Beam: 8' 6" (2.59m)

Min Draft: 3' 6" (1.07m)

Our experienced yacht broker, Andrey Shestakov, will help you choose and buy a yacht that best suits your needs **Noeta — Nielson** from our catalogue. Presently, at Shestakov Yacht Sales Inc., we have a wide variety of yachts available on our sale's list. We also work in close contact with all the big yacht manufacturers from all over the world.

If you would like to buy a yacht **Noeta — Nielson** or would like help answering any questions concerning purchasing, selling or chartering a yacht, please call **+1(954)274-4435**

TABLE OF CONTENTS

TABLE OF CONTENTS	2
SPECIFICATIONS	4
Overview	4
Basic Information	4
Dimensions	4
Speed, Capacities and Weight	4
Accommodations	4
Hull and Deck Information	5
Engine Information	5
DETAILED INFORMATION	6
Overview	6
Exclusions	6
Disclaimer	6
PHOTOS	7
3	7
2	7
4	7
5	7
6	8
7	8
8	8
9	8
10	9
11	9
12	9
13	9
14	10
15	10

16	10
17	10
18	10
19	10
20	11
CONTACTS	12
Contact details	12
Telephones	12
Office hours	12
Address	12

SPECIFICATIONS

Overview

*This listing is available for virtual and in person tours, please contact the listing broker to schedule an appointment*NOETA is a beautiful K. Aage Nielsen designed CCA-era centerboard yawl built in Denmark in 1960. Neilsen made his name on designing fast, stable and seaworthy shoal draft centerboard boats perfect for racing or cruising and NOETA is a perfect example of that. She has been well maintained and comes with an extensive racing pedigree. Many classic yacht touches including beautiful custom hardware. Current owner has hauled the boat each winter and the spars have been unstepped and rigging inspected. She is mahogany planked over laminated white oak frames. Deck is plywood covered in Dynel fabric. The current survey on the boat is from 2014

Basic Information

Category: Yawl

Model Year: 1960

Year Built: 1960

Country: United States

Dimensions

LOA: 30' 0" (9.14m)

LWL: 21' 0" (6.40m)

Beam: 8' 6" (2.59m)

Min Draft: 3' 6" (1.07m)

MFG Length: 30' 0" (9.14m)

Speed, Capacities and Weight

Water Capacity: 40 Gallons

Fuel Capacity: 161 Gallons

Accommodations

Total Cabins: 1

Total Heads: 1

Hull and Deck Information

Hull Material: Wood

Engine Information

Engines: 1

Manufacturer: westerbeke

Model: W21A

Engine Type: Inboard

Fuel Type: Diesel

DETAILED INFORMATION

Overview

Accommodations: Sleeps 4. Full headroom aft. Rhode locker forward with V-berth. The head is amidships at the main mast. Main cabin has settee berths both port and starboard with mahogany double leaf salon table, seating for four. Port main bulkhead has Taylor LPG heating stove. Galley is aft; ice box on the port side and stainless steel sink with bronze pump on the starboard side. Stove is one burner electrical stove. Sail inventory: Genoa - 155% Pentex - 2006 152% - 1999 Mylar/Poly radial genoa - 1996 Jib - Harken roller furling headsail - 2009 Blade 1996 Main - 2000 Radial Dacron - 1996 Mizzen - 2000 Radial Dacron - 1996 Spinnaker - AP - 1996 Shore Sails - 1987

Hood Multi Purpose Mizzen Staysail - 1990 Electrical 12V lighting and 12V starting systems, engine driven alternator 12V (2) AGM batteries Circuit breaker panel - Bass AC-DC - 2005

Additional Information Other Equipment: Winches: Halyard - Merriman Sheet - Barient 21 two speed bronze self tailing Rigging - Stainless steel standing rigging, replaced approximately 19 years ago. Anchor - 25 lb CQR (plow) 6lb Danforth 30' chain & 250' line Spreader lights Sail cover

Exclusions

Owner's personal belongings.

Disclaimer

The Company offers the details of this vessel or yacht in good faith but cannot guarantee or warrant the accuracy of this information nor warrant the condition of the vessel. A buyer should instruct his representatives, agents, or his surveyors, to investigate such details as the buyer desires validated. This vessel or yacht is offered subject to prior sale, price change, or withdrawal without notice.

PHOTOS

2



3



4



5



6



7



8



9



10



11



12



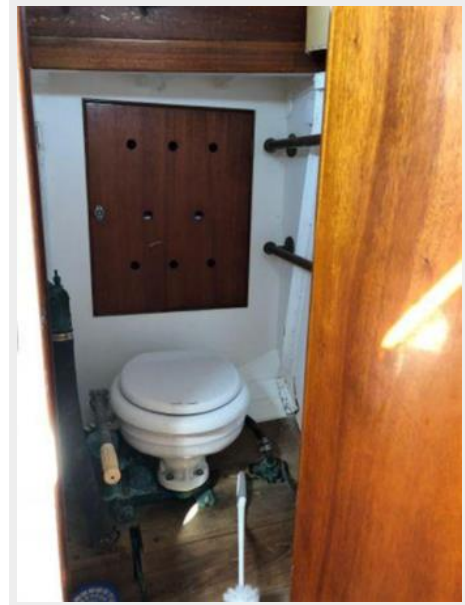
13



14



15



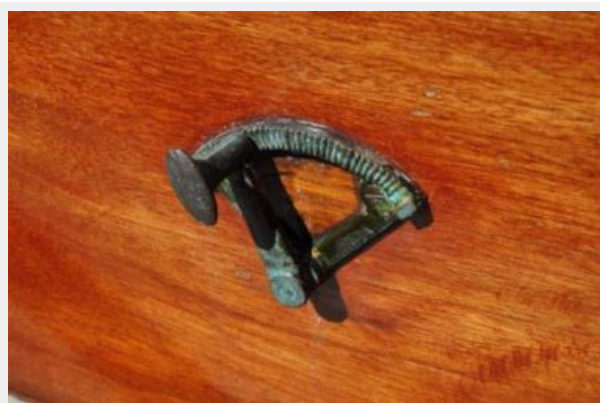
16



17



18



19



20



CONTACTS

Andrey Shestakov, leading yacht broker of the sales department of Shestakov Yacht Sales Inc. Shestakov Yacht Sales Inc., the official representative of the Miami/Fort Lauderdale FL headquarters.

Contact details

Email: andrey@shestakovyachtsales.com

Web: shestakovyachtsales.com/en/

Telephones

USA: +1(954)274-4435

Office hours

Monday – Saturday: **9:00 - 21:00** EDT

Sunday: **closed**

Address



Harbour Towne Marina, 850 NE 3rd St,
STE 213, Dania, FL 33004