

NOMAD — EASTERN



Builder: EASTERN

Year Built: 2015

Model: Sport Fisherman

Price: PRICE ON APPLICATION

Location: United States

LOA: 27' 4" (8.33m)

Beam: 10' 3" (3.12m)

Max Draft: 2' 4" (0.71m)

Cruise Speed: 20 Kts. (23 MPH)

Max Speed: 28 Kts. (32 MPH)

Our experienced yacht broker, Andrey Shestakov, will help you choose and buy a yacht that best suits your needs **Nomad — EASTERN** from our catalogue. Presently, at Shestakov Yacht Sales Inc., we have a wide variety of yachts available on our sale's list. We also work in close contact with all the big yacht manufacturers from all over the world.

If you would like to buy a yacht **Nomad — EASTERN** or would like help answering any questions concerning purchasing, selling or chartering a yacht, please call **+1(954)274-4435**

TABLE OF CONTENTS

TABLE OF CONTENTS	2
SPECIFICATIONS	5
Overview	5
Basic Information	5
Dimensions	5
Speed, Capacities and Weight	6
Accommodations	6
Hull and Deck Information	6
Engine Information	6
DETAILED INFORMATION	7
Overview	7
Exclusions	8
Disclaimer	8
PHOTOS	10
3	10
2	10
4	10
5	10
7	11
6	11
8	11
9	11
10	12
11	12
13	12
12	12
14	13
15	13

16	13
17	13
18	14
19	14
20	14
21	14
22	15
23	15
24	15
25	15
26	15
27	15
28	16
29	16
30	16
31	16
32	16
33	16
35	17
34	17
36	17
37	17
38	18
39	18
40	18
41	18
43	19
42	19
44	19

45	19
47	20
46	20
48	20
49	20
50	21
51	21
52	21
53	21
54	22
55	22
57	22
56	22
58	23
59	23
60	23
61	23
62	24
63	24
CONTACTS	25
Contact details	25
Telephones	25
Office hours	25
Address	25

SPECIFICATIONS

Overview

**** Recent \$10k price improvement, offers encouraged ****This listing is available for virtual and in person tours, please contact the listing broker to schedule an appointment. NOMAD represents an economical and roomy Lobster Cruiser with shallow draft and single fuel efficient Electronic Controlled [fly by wire] Honda BF250 Outboard and Sidepower Bow Thruster. She has an Armstrong Bracket with full width swim platform. Her performance and economy will surprise you with top speeds in the 30kt range and cruise at 18-20 Kts. You will be in full control with her integrated NMEA 2000 engine monitoring and Garmin's latest 10" display with sounder, radar and full featured chart plotter with cartography. Garmin's and Honda's techs set up this boat and she is turn key .She is equipped with a Vacuflush Head with 30 gallon Holding capacity. The freshwater capacity is 30 Gallons There are twin 96 Gallon fuel tanks with a valve for an enormous cruising range. There is a large under cockpit berth that's perfect for kids, dogs or storage for cruising applications. There are cockpit steps on the port and stbd. sides for easy entry and exit as well as an Armstrong Dive Ladder on the full width Armstrong Bracket for easy swimming and diving opportunities. She has Ultra Leather upholstery as well as a Bow Thruster and Lewmar windlass, opening front windows and 10" roof ventilation hatches in Helm area. She is equipped with a 3 panel canvas cabin back enclosure with Isinglass. The helm deck Galley has a freshwater sink and a Dometic Norcold fridge

Basic Information

Category: Sport Fisherman

Model Year: 2015

Year Built: 2015

Country: United States

Dimensions

LOA: 27' 4" (8.33m)

Beam: 10' 3" (3.12m)

Max Draft: 2' 4" (0.71m)

MFG Length: 27' 0" (8.23m)

Speed, Capacities and Weight

Cruise Speed: 20 Kts. (23 MPH)

Max Speed: 28 Kts. (32 MPH)

Displacement: 8000 Pounds

Water Capacity: 30 Gallons

Holding Tank: 30 Gallons

Fuel Capacity: 96 Gallons

Accommodations

Total Cabins: 2

Total Berths: 2

Total Heads: 1

Hull and Deck Information

Hull Material: Fiberglass

Engine Information

Engines: 1

Manufacturer: Honda

Model: BF250 iST

Engine Type: Outboard

Fuel Type: Gas

DETAILED INFORMATION

Overview

Features

- Two/Tone, Cockpit Sole
- Hard Cabin Sides w/ Sliding Windows and screens
- LED Spreader Lights
- Stainless Steel Hardware
- Black Rub Rail / Spray Rails w/ SS Insert
- (2) Electric Windshield Wipers
- Stainless Steel Bow Eye
- Self-Bailing, Inner Liner
- Inspection Deck Plates
- Coffin Berth w/ Cushion
- V-Berth Filler w/ Cushion
- V-Berths w/ Cushions & Shelves
- Armstrong Outboard Bracket
- (2) Drink / Rod Holders
- Twin 96 Gallon Fuel Tanks
- (2) Fuel Filter & Water Separators
- 3-piece canvas Aft Curtain
- Scuppers
- Trim Tabs
- Transom Door
- White Boot Stripe
- (4) 110 Outlets
- 20x20 Cabin Hatch
- Bow Roller / Deck Pipe
- 12V Switch Panels
- Tilt-out Waste Basket under companion seat
- Hanging Locker
- Teak Wire Ways
- Fold-Down Helm
- In-Floor Storage
- Rear Seat Package
- Upgraded Helm Seat (Arrigoni)
- Double Wide Companion Seat

Navigation Lights

- TV / DVD
- Port Upholstered Bench
- (2) Electric Bilge Pumps & Auto Floats
- Dual Front Opening Windshields
- Stainless Steel Bow Rail
- LED Dome Lights
- LED Courtesy Lights
- Galley with Sink, Vacu Flush Head, Shower
- Wired for Dual Batteries with Switch
- 30 Gallon Fresh Water
- Hot Water Heater
- Cockpit Table - Teak
- Sunbrella Upholstery

Manufacturer DescriptionOur 27 Islander is roomy enough for day-tripping a large family or a comfortable week's cruising for a couple. Behind her gracefully-flared bow, she carries a 10'3" beam on a hard-chine hull that rises easily onto plane with twin 150-hp outboards or a single 250-300 mounted on a bracket. This model retains the dry, soft-riding characteristics at useful speeds for which Eastern boats are known. Belowdecks, a forward V-berth converts to a settee with table or a spacious double bunk with the table lowered. An enclosed head provides a Vacu-flush toilet and a shower. Opposite to starboard is a hanging locker. A berth under the mid-deck presents additional sleeping capacity or capacious storage. A flat-screen TV for the cabin is standard, with reverse-cycle air conditioning optional. The mid-deck provides a galley-up aft of the helm seat. To port is a double forward-facing companion seat opposite the helm, with a double lounge seat and an aft-facing cooler seat behind. An optional aft Bimini top can shade the upholstered transom bench seat, and a bow thruster can ease the docking process. Where can she take you?

Electronics

- GMR 18 HD Radar
- Garmin 200 VHF radio
- Garmin GPS Map 7610xsv Multi Function Display
- Through-hull transducer
- NEMA 200 Backbone and Honda interface on Garmin display
- Lectrotab trim tabs
- Lewmar electric windlass with helm up/down switch
- Honda electronic shift/throttle control
- Honda gauges with fuel management display

Exclusions

Owner's personal belongings.

Disclaimer

The Company offers the details of this vessel or yacht in good faith but cannot guarantee or warrant the accuracy of this information nor warrant the condition of the vessel. A buyer should instruct his representatives, agents, or his surveyors, to investigate such details as the buyer desires validated. This vessel or yacht is offered subject to prior sale, price change, or withdrawal without notice.

PHOTOS

2



3



4



5



6



7



8



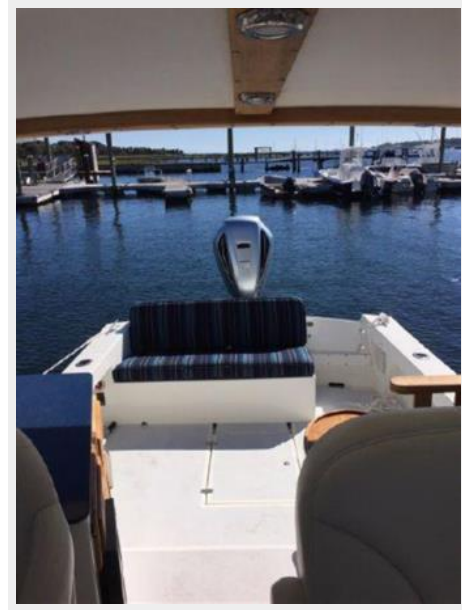
9



10



11



13



12



14



15



16



17



18



19



20



21



22



23



24



25



26



27



28



29



30



31



32



33



34



35



36



37



38



39



40



41



42



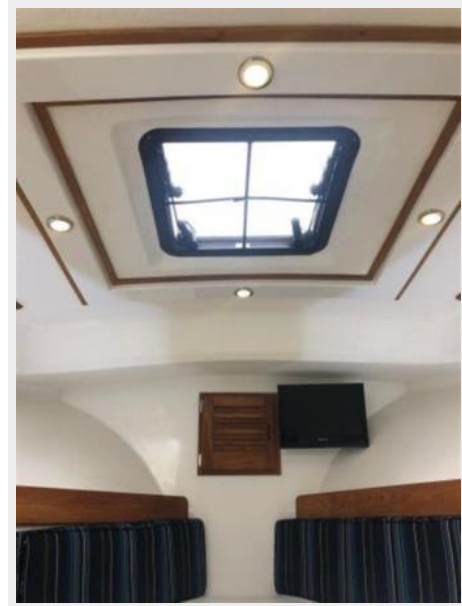
43



44



45



46



47



48



49



50



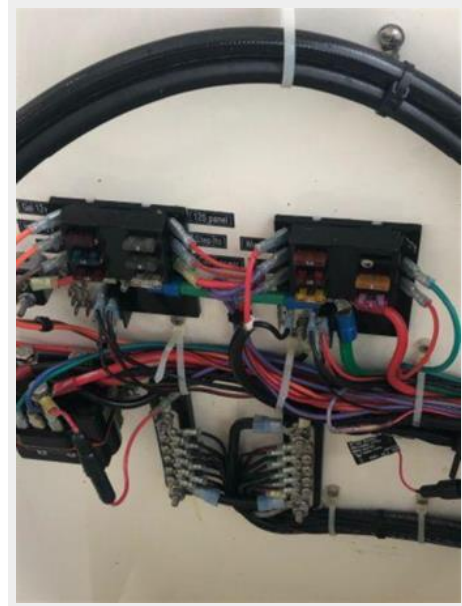
51



52



53



54



55



57



56



58



59



60



61



62



63



CONTACTS

Andrey Shestakov, leading yacht broker of the sales department of Shestakov Yacht Sales Inc. Shestakov Yacht Sales Inc., the official representative of the Miami/Fort Lauderdale FL headquarters.

Contact details

Email: andrey@shestakovyachtsales.com

Web: shestakovyachtsales.com/en/

Telephones

USA: +1(954)274-4435

Office hours

Monday – Saturday: **9:00 - 21:00** EDT

Sunday: **closed**

Address



Harbour Towne Marina, 850 NE 3rd St,
STE 213, Dania, FL 33004