

24 2000 PURSUIT 2470 CC — PURSUIT



Builder: PURSUIT

Year Built: 2000

Model: Center Console

Price: PRICE ON APPLICATION

Location: United States

LOA: 26' 5" (8.05m)

Beam: 8' 6" (2.59m)

Max Draft: 1' 3" (0.38m)

Our experienced yacht broker, Andrey Shestakov, will help you choose and buy a yacht that best suits your needs 24 2000 Pursuit 2470 CC — PURSUIT from our catalogue. Presently, at Shestakov Yacht Sales Inc., we have a wide variety of yachts available on our sale's list. We also work in close contact with all the big yacht manufacturers from all over the world.

If you would like to buy a yacht 24 2000 Pursuit 2470 CC — PURSUIT or would like help answering any questions concerning purchasing, selling or chartering a yacht, please call +1(954)274-4435

TABLE OF CONTENTS

TABLE OF CONTENTS	2
SPECIFICATIONS	5
Overview	5
Basic Information	5
Dimensions	5
Speed, Capacities and Weight	5
Accommodations	5
Hull and Deck Information	6
Engine Information	6
DETAILED INFORMATION	7
Overview	7
Exclusions	9
Disclaimer	9
PHOTOS	10
3	10
2	10
5	10
4	10
6	10
7	10
8	11
9	11
10	11
11	11
12	12
13	12
14	12
15	12

17	13
16	13
18	13
19	13
20	14
21	14
22	14
23	14
25	15
24	15
26	15
27	15
28	16
29	16
30	16
31	16
32	16
33	16
34	17
35	17
36	17
37	17
38	18
39	18
40	18
41	18
42	19
43	19
44	19

45	19
46	20
47	20
48	20
49	20
50	20
CONTACTS	21
Contact details	21
Telephones	21
Office hours	21
Address	21

SPECIFICATIONS

Overview

** Recent \$10,000 price improvement **Rare opportunity to own one of Pursuit's most popular center console's, recipient of an extensive re-fit in 2017 by one of Cape Cod's premier boatyards. New twin Yamaha 150hp 4-strokes, all new rigging and gauges, brand new Garmin electronics, Underwater lights, LED lighting, new windshield, T-Top re-welded, new canvas top fabricated and more. Over \$60k in receipts. Yamaha Warranties until July 2023 !! ** 2017 triple axle NexTrail aluminum bunk trailer with custom rims available for purchase, however not included in the listing. **

Basic Information

Category: Center Console

Model Year: 2000

Year Built: 2000

Country: United States

Dimensions

LOA: 26' 5" (8.05m)

Beam: 8' 6" (2.59m)

Max Draft: 1' 3" (0.38m)

Clearance: 6' 4" (1.93m)

MFG Length: 24' 0" (7.32m)

Speed, Capacities and Weight

Displacement: 3400 Pounds

Water Capacity: 20 Gallons

Holding Tank: 30 Gallons

Fuel Capacity: 150 Gallons

Accommodations

Total Heads: 1

Hull and Deck Information

Hull Material: Fiberglass

Hull Configuration: Deep Vee

Engine Information

Engines: 2

Manufacturer: Yamaha

Model: F150XB

Engine Type: Outboard

Fuel Type: Gas

DETAILED INFORMATION

Overview

Manufacturer Provided Description Highly praised by experienced anglers, the Pursuit 2470 Center Console is perhaps the most versatile fishing machine Pursuit makes. Certainly, she is one of the most popular. Offering as smooth, dry, and stable a ride as can be found in a boat of this size, family and friends can be taken far offshore with complete confidence. Yet she has the shallow draft and maneuverability wanted for inshore fishing. The 2470 Center Console is laid out to give all the open space needed to fight and land even the biggest fish. The integrated transom features a large bait and tackle rigging station, a freshwater sink with a spray hose, a cutting board, and a 30-gallon fish box. As on all Pursuits, the command console is a tilt-away design, giving the easy access to wiring that makes flush-mounting of electronics simple. The 2470 Center Console comes in a choice of a standard white or optional Pursuit green.

Equipment List Pursuit 2470 Center Console Specifications - Standard Equipment Hull, Deck & Cockpit - 5-year hull and deck structural and blister-free transferable warranty - 1-2-inch stainless steel bow & transom eyes (3) - Self-draining cockpit - One-piece welded 1-inch stainless steel bow rail - Four 8-inch stainless steel mooring cleats - Two 8-inch stainless steel spring cleats - Forward rode and anchor locker with overboard drain - Raw water washdown - Transom door - Molded-in integrated transom - Cockpit coaming bolsters Command Console - Forward console seat with built-in cooler, cushion and backrest - Tilt-away, handlaid fiberglass wrap-around console - Opening port light with screen - Drink holders - Console courtesy lights - Enclosed head compartment: sink, pressure water, portable marine head - Mold & mildew resistant fabric headliner - 1-4-inch tinted acrylic windshield Fishing Package - Rod racks in cockpit - Four stainless steel rod holders - Large insulated fish - storage boxes forward - Leaning post with rod holders, circulating livewell and storage - Storage for four trolling rods - Pursuit Plus Transom: stern bait & tackle rigging station, removable cutting board, sink, freshwater supply, 30 gallon fish-box cooler, rigged bait storage - Tackle locker Instrumentation, Equipment & Safety - Hydraulic steering - 16-inch custom cast aluminum steering wheel - Master circuit breaker box - Dual battery switch with battery trays - 12V electrical panel with breakers - 150 gallon aluminum fuel tank - 20 gallon freshwater tank - Recessed trim tabs - USCG & international lighting - Automatic bilge pump - Foam flotation - Fire extinguisher, horn and compass - Grab rail - Molded-in electronics storage - Yamaha Fuel Management System (twin) Pursuit 2470 Center Console Optional Equipment Engines - Yamaha 225 hp EFI (Single) - Yamaha 250 hp EFI (Single) - Yamaha 150 hp (Twin) - Yamaha 150 hp EFI (Twin) Mechanical Systems - Bow pulpit with bow anchor roller - Auto anchor system - Wiring only for windlass - Yamaha Fuel Management System (single) - Pursuit Green hull - Helm foot rest Fishing Package - Rupp Top Gun outriggers 15 foot (T-top mount) - Rupp Top Gun, radial arm, outriggers 15 foot - Rod holders for T-top Comfort & Convenience - Forward poly sunpad filler with cushion - China bowl head with holding tank (manual) - China bowl head with holding tank (electric) - Y-valve with in-line macerator - Armstrong boarding ladder - Removable cockpit bench seat - Clarion AM-FM stereo & cassette

with 4 speakers - Clarion AM-FM stereo & CD with 4 speakers - Forward poly sunpad filler with cushion Weather Group - Bimini top - Console cover - T-top with spreader light - T-top with Top Gun outriggers - T-top with Top Gun radial arm outriggers - T-top enclosure (deletes windshield) - Sprayhood - Engine cover - Shipping cradle
Standard Equipment - Hull, Deck, Cockpit

- 5-year hull/deck structural & blister-free transferable warranty
- 1/2" S.S. bow & transom eyes (3)
- Self-draining cockpit
- One-piece welded 1" S.S. bow rail
- Four 8" S.S. mooring cleats
- Two 8" S.S. spring cleats
- Forward rode/anchor locker with overboard drain
- Raw water washdown
- Transom door
- Molded-in integrated transom
- Cockpit coaming bolsters
- Boarding ladder

Console

- Forward console seat/built-in cooler with cushion & backrest
- Tilt-away, handlaid fiberglass wrap-around console
- Opening port light with screen
- Drink holders
- Console courtesy lights
- Enclosed head compartment w/sink, pressure water & portable marine head
- Mold & mildew resistant fabric headliner
- 1/4" tinted acrylic windshield
- Helm foot rest

Fishing Amenities

- Rod racks in cockpit
- Four S.S. rod holders
- Large insulated fish/storage boxes forward
- Leaning post w/rod holders, circulating livewell & storage
- Storage for (4) trolling rods
- " Pursuit Plus" transom w/stern bait & tackle rigging station w/ removable cutting board, sink, freshwater supply, 30 gal. fish-box cooler & rigged bait storage
- Tackle locker

Instrumentation and Safety

- Hydraulic steering
- 16" Custom cast aluminum steering wheel
- Master circuit breaker box

- Dual battery switch with battery trays
- 12V electrical panel w/breakers
- 150 gallon aluminum fuel tank
- 20 gal. freshwater tank
- Recessed trim tabs
- U.S.C.G. & international lighting
- Automatic bilge pump
- Foam flotation
- Fire extinguisher, horn & compass
- Grab rail
- Boarding ladder
- Ample console space
- Pursuit meets or exceeds all U.S.C.G. & N.M.M.A. standards
- Yamaha Fuel Mgmt System(twin)

2017 Upgrades Re-Powered in 2017 with brand new Twin Yamaha 150hp 4-stroke engines. (Aprx 100hrs on engines). All brand new rigging including cables, gauges, controls, fuel management system, etc. Remote fills for oil tanks installed. Engines have 4 year Yamaha warranty remaining, until July 2023. NEW: Boat stripes, bottom paint, Cockpit spreader LED light, Head compartment LED lighting, new LED anchor light, transom underwater LED lights, bilge pumps, and livewell pump. NEW: 20 gallon fresh water tank, 30 gallon holding tank w/ new macerator pump, (2) new batteries with switches. NEW: 2017 ELECTRONICS - Garmin 7616 integrated touch screen GPS, fish finder, and radar system. New Fusion marine audio system and speakers. NEW: Acrylic windshield fabricated and installed, Aluminum T-Top reworked and NEW Canvas lace-on top installed. NEW: 2017 triple axle NexTrail aluminum bunk trailer with custom rims, available for purchase, not included in the listing.

Exclusions

Owner's personal belongings.

Disclaimer

The Company offers the details of this vessel or yacht in good faith but cannot guarantee or warrant the accuracy of this information nor warrant the condition of the vessel. A buyer should instruct his representatives, agents, or his surveyors, to investigate such details as the buyer desires validated. This vessel or yacht is offered subject to prior sale, price change, or withdrawal without notice.

PHOTOS

2



3



4



5



6



7



8



9



10



11



12



13



14



15



16



17



18



19



20



21



22



23



24



25



26



27



28



29



30



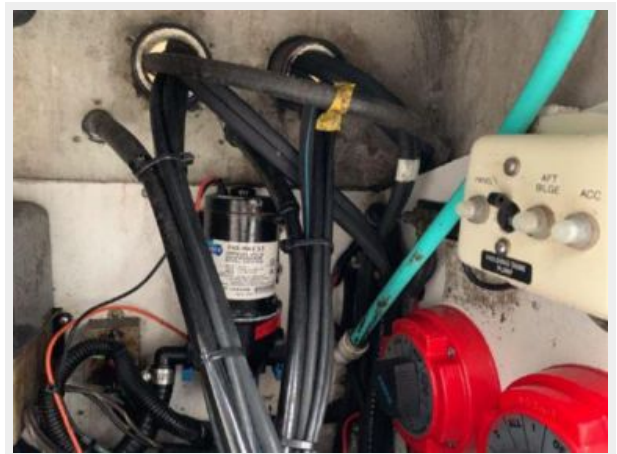
31



32



33



34



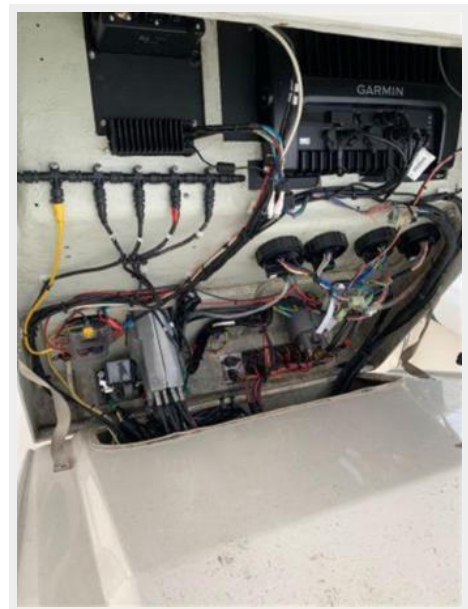
35



36



37



38



39



40



41



42



43



44



45



46



47



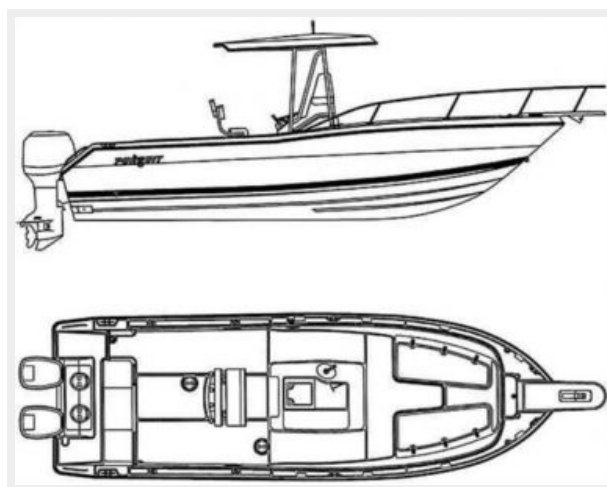
48



49



50



CONTACTS

Andrey Shestakov, leading yacht broker of the sales department of Shestakov Yacht Sales Inc. Shestakov Yacht Sales Inc., the official representative of the Miami/Fort Lauderdale FL headquarters.

Contact details

Email: andrey@shestakovyachtsales.com

Web: shestakovyachtsales.com/en/

Telephones

USA: +1(954)274-4435

Office hours

Monday – Saturday: **9:00 - 21:00** EDT

Sunday: **closed**

Address



Harbour Towne Marina, 850 NE 3rd St,
STE 213, Dania, FL 33004