

## KOO — VITTERS



**Судостроитель:** VITTERS

**Год постройки:** 2002

**Модель:** Sloop

**Цена:** **ЦЕНА ЯХТЫ ПО ЗАПРОСУ**

**Местонахождение:** France

**Длина общая:** 141' 4" (43.07m)

**Ширина:** 28' 11" (8.80m)

**Макс. осадка:** 14' 5" (4.37m)

**Крейс. скорость:** 10 Kts. (12 MPH)

**Макс. скорость:** 13 Kts. (15 MPH)

Купить **KOO — VITTERS** а также выбрать подходящую вам яхту из нашего каталога яхт вам поможет опытный яхтенный брокер Андрей Шестаков. На сегодняшний день компания **Shestakov Yacht Sales Inc.** имеет большое количество яхт в собственном списке продаж, а также тесно сотрудничает со всеми крупными яхтенными производителями по всему миру.

Для того чтобы купить яхту **KOO — VITTERS** а также проконсультироваться по любому вопросу связанному с покупкой, продажей, чартером яхт позвоните по телефону **+7(918)465-66-44**.

# ОГЛАВЛЕНИЕ

---

ОГЛАВЛЕНИЕ	2
ХАРАКТЕРИСТИКИ	3
Обзор	3
Основная информация	3
Размеры	3
Скорость, вместимость и масса	4
Размещение	4
Корпус и палуба	4
Информация о двигателе	4
ПОДРОБНОЕ ОПИСАНИЕ	5
DETAILED DESCRIPTION	5
Исключения	16
Отказ от ответственности	16
ФОТОГРАФИИ	17
КОНТАКТЫ	24
Контактная информация	24
Телефоны	24
Время работы	24
Адрес	24

# ХАРАКТЕРИСТИКИ

## Обзор

Built by the renowned Dutch sailing yacht shipyard Vitters and launched as African Queen, Koo's interior design by Redman Whiteley Dixon is timeless but still contemporary, with neutral colours that have a wide appeal.

Designed and conceived with excellent storage and freezer space in order to go around the world as a luxurious bluewater world cruiser, in her current ownership Koo has fulfilled the original design brief admirably by voyaging extensively and circumnavigating the globe twice. Indeed she makes the perfect round the world platform, being big enough to be comfortable, yet compact enough for the running costs to be manageable.

Solidly built with the customary Dutch attention to comfort and quality, she is a quiet yacht with excellent noise and vibration characteristics, and with her extensive relaxation spaces both inside and out she makes a comfortable home on the water for both passengers and crew even for extended periods. This is especially true since the addition of a new carbon hardtop, providing welcome shade from the tropical sun under way, and which has had the additional benefit of updating her lines so that her look belies her build date.

With her carbon spars Koo is also no slouch around the race course, most recently winning her class at the 2017 St Barths Bucket.

Fresh from an extensive technical and cosmetic refit in Auckland with new paint, rig, decks, and rebuilt engines and generators, she is now in turnkey condition and available for a new owner to take on a new adventure.

## Основная информация

**Тип судна:** Sloop

**Модельный год:** 2002

**Год постройки:** 2002

**Год обновления:** 2019

**Страна:** France

## Размеры

**Длина общая:** 141' 4" (43.07m)

**Длина по ватерлинии:** 115' 5" (35.17m)

**Ширина:** 28' 11" (8.80m)

**Макс. осадка:** 14' 5" (4.37m)

## Скорость, вместимость и масса

**Крейс. скорость:** 10 Kts. (12 MPH)

**Дальность на крейсерской скорости:**  
3300

**Макс. скорость:** 13 Kts. (15 MPH)

**Водоизмещение:** 502653.95736 Pounds

**Чистый вес:** 240 Pounds

**Вместимость воды:** 8875 Gallons

**Объем топливного бака:** 21840 Gallons

## Размещение

**Всего кают:** 4

**Спальные места:** 8

**Каюты экипажа:** 3

**Спальных мест экипажа:** 6

## Корпус и палуба

**Материал корпуса:** Aluminum

**Материал палубы:** Teak

**Дизайнер экстерьера:** Dubois Naval Architects

**Дизайнер интерьера:** Redman Whitely Dixon / Axel Vervoordt

## Информация о двигателе

**Двигатели:** 1

**Производитель:** MTU

**Модель:** 12V 183TE72

**Тип двигателя:** Inboard

**Тип топлива:** Diesel

# ПОДРОБНОЕ ОПИСАНИЕ

## DETAILED DESCRIPTION

```
#edmiston-espec { font-family: 'Helvetica Neue LT Std', 'Sans'; font-weight: 200; font-style:
normal; text-align: justify; text-justify: inter-word; line-height: 1.5em; color: #444; } #edmiston-
espec table { border-spacing: 0px; border-collapse: collapse; } #edmiston-espec td { text-align:
left; vertical-align: top; padding: 0px; margin: 0px; line-height: 1.5em; } #edmiston-espec th { text-
align: left; vertical-align: top; padding: 0px; margin: 0px; width: 5cm; } #edmiston-espec h1 { font-
family: 'Times New Roman','Serif'; color: #DB001E; } #edmiston-espec h2 { font-family: 'Times
New Roman','Serif'; color: #DB001E; } #edmiston-espec h3 { font-family: 'Times New
Roman','Serif'; color: #222; } #edmiston-espec ul { list-style: none; margin: 0; padding: 0 0 0 20px;
} #edmiston-espec li.bullet { list-style: disc; }
```

### 1. MAIN CHARACTERISTICS

<b>TYPE</b>	◦ Sloop Sailing Yacht
<b>HULL NO.</b>	◦ 3044
<b>BUILDER</b>	◦ Vitters
<b>NAVAL ARCHITECT</b>	◦ Dubois Naval Architects
<b>EXTERIOR DESIGN</b>	◦ Dubois Naval Architects
<b>INTERIOR DESIGN</b>	◦ Redman Whitely Dixon / Axel Vervoordt
<b>YEAR</b>	◦ 2002
<b>REFIT</b>	◦ 2016 / 2019
<b>IMO</b>	◦ 9095486
<b>CLASSIFICATION</b>	◦ Lloyds 100 A1 SSC Yacht Mono G6 MCH and MCA LYI compliant
<b>CONSTRUCTION</b>	◦ Aluminium Hull & Superstructure ◦ New 20mm teak laid decks 2019 ◦ Carbon fibre rig
<b>CREW</b>	◦ 6
<b>FLAG</b>	◦ UK
<b>ENGINE</b>	◦ 1 x 820Hp MTU 12V 183TE72 diesel ◦ Complete engine rebuild 2019 (MTU W6 service)
<b>GT</b>	◦ 240
<b>NT</b>	◦ 72
<b>DISPLACEMENT</b>	◦ 228 tons / 502,653 lbs - light ship

### 2. DIMENSIONS

<b>LOA</b>	◦ 43.07m / 141'3"
<b>LWL</b>	◦ 35.17m / 115'5"

**BEAM**    ◦ 8.80m / 28'10"

**DRAFT**    ◦ 4.37m / 14'4"

### 3. SPEED & RANGE UNDER POWER

**MAXIMUM SPEED**    ◦ 13 knots

**CRUISING SPEED**    ◦ 10 knots

**RANGE**    ◦ 3,300nm approx.

### 4. CAPACITIES

**ACCOMMODATION**    ◦ 8 + 1 x Guests in 4 cabins

**CREW**    ◦ 6 x Crew in 3 cabins

**FUEL**    ◦ 21,840 litres / 5,770 US gallons

**FRESH WATER**    ◦ 8,875 litres / 2,345 US gallons

**GREY WATER**    ◦ 2,220 litres / 586 US gallons

**BLACK WATER**    ◦ 658 litres / 174 US gallons

**HYDRAULIC OIL**    ◦ 351 litres / 93 US gallons

**LUBE OIL**    ◦ 334 litres / 88 US gallons

**SLUDGE OIL**    ◦ 707 litres / 187 US gallons

### 5. ACCOMMODATION

#### ◦ OWNER

- Full beam Owner's cabin aft with bathroom and study en suite
- Study fitted with a single day bed

#### ◦ GUESTS

- 3 x Double cabins with shower room en suite

#### ◦ CREW

- 3 x upper & lower berthed crew cabins with shower rooms en suite
- Ship's office forward on port side

#### ◦ COCKPIT

- 1 x Dining table
- 2 x coffee tables which convert to a second dining table

#### ◦ DECKHOUSE

- Telescopic coffee/dining table

#### ◦ SALOON

- Glass dining table

### 6. MECHANICAL EQUIPMENT

**MAIN ENGINES**    ◦ 1 x 820Hp MTU 12V 183TE72 diesel

**MAIN ENGINE HOURS**    ◦ 1,300 hours since rebuild

**GEARBOX**    ◦ 1 x ZF reverse reduction BW 211

**PROPELLERS**    ◦ 4-blade CPP Hydrosta/Korsor CP18hrs with Rexroth electronics

**STEERING SYSTEM**    ◦ Hydrosta hydraulic - 24V and manual emergency back up systems

<b>BOWTHRUSTER STERN THRUSTER</b>	<ul style="list-style-type: none"> <li>o 1 x 100Hp Hydrosta retractable</li> <li>o 1 x 100Hp Hydrosta retractable</li> </ul>
<b>GENERATORS</b>	<ul style="list-style-type: none"> <li>o 2 x 50kW Northern Lights M668D</li> </ul>
<b>GENERATOR HOURS</b>	<ul style="list-style-type: none"> <li>o 2,162 hrs / 3,354 hrs since rebuild – April 2020</li> <li>o (both rebuilt at 10,000 hours)</li> </ul>
<b>ELECTRICITY</b>	<ul style="list-style-type: none"> <li>o 240V single phase 50Hz at wall sockets</li> <li>o 24V DC supply for emergency back up systems</li> </ul>
<b>SHORE POWER</b>	<ul style="list-style-type: none"> <li>o Asea power system AC45Q-3 - 45KV<sub>a</sub> (Replaced in 2015)</li> <li>o Glendenning Shore Power Cable Stowage System</li> </ul>
<b>BATTERIES</b>	<ul style="list-style-type: none"> <li>o 24v DC for engine start &amp; emergency systems</li> <li>o MarineAir chilled water plant</li> </ul>
<b>AIR CONDITIONING</b>	<ul style="list-style-type: none"> <li>o 3 x Danfoss Compressors – HLJ083T4LC6</li> <li>o Chilled water Pump- Johnson CB 32-125</li> <li>o Sea water Pump – Johnson CB- 50- 125</li> </ul>
<b>COMPRESSOR SERVICE AIR</b>	<ul style="list-style-type: none"> <li>o Hydrovane 502 2.2kW</li> <li>o Racor Air Dryer</li> </ul>
<b>ER VENTILATION</b>	<ul style="list-style-type: none"> <li>o 2 x Gianneschi extractor units and fire dampers (New 2019)</li> <li>o 1 x Heinen &amp; Hopman fire damper</li> <li>o Port and Starboard invertible Engine room Fans</li> </ul>
<b>WATER MAKER</b>	<ul style="list-style-type: none"> <li>o 1 x HEM Series 30 – 540 l/h</li> <li>o 1 x HEM Series 25 - 240 l/h</li> </ul>
<b>WATER BOILER</b>	<ul style="list-style-type: none"> <li>o 1 x Barco RVS 164L</li> <li>o 1 x Barco RVS 132L</li> </ul>
<b>TOILETS</b>	<ul style="list-style-type: none"> <li>o 8 x Headhunter, Royal Flush jet marine toilet</li> </ul>
<b>FRESH WATER PUMP</b>	<ul style="list-style-type: none"> <li>o Grundfos A96 – 70 l/m</li> </ul>
<b>HOT WATER PUMP</b>	<ul style="list-style-type: none"> <li>o Johnson F5B-9</li> </ul>
<b>SEWAGE SYSTEM</b>	<ul style="list-style-type: none"> <li>o Hamann sewage treatment system</li> </ul>
<b>BLACK / GREY PUMPS</b>	<ul style="list-style-type: none"> <li>o 2 x BBA B40 BVGMC 1.1kW</li> </ul>
<b>FUEL PUMPS</b>	<ul style="list-style-type: none"> <li>o Kral N7020104</li> </ul>
<b>FUEL TREATMENT SYSTEM</b>	<ul style="list-style-type: none"> <li>o NFV FTS600W</li> </ul>
<b>FUEL FILTERS</b>	<ul style="list-style-type: none"> <li>o Sedar 2000/18U</li> </ul>
<b>OIL WATER SEPERATOR</b>	<ul style="list-style-type: none"> <li>o NFV PPT-BWS-500</li> </ul>
<b>BILGE PUMP</b>	<ul style="list-style-type: none"> <li>o Johnson BV Fres50-125</li> <li>o 7 x Jabasco Submersible Ruel 3700 Pumps</li> </ul>
<b>CRASH PUMP</b>	<ul style="list-style-type: none"> <li>o Bleu Navel backup Diesel Pump</li> </ul>
<b>FIRE PUMP</b>	<ul style="list-style-type: none"> <li>o Giannschi BIMA-s 55-17A1 5.5Kw - New 2019</li> </ul>

## 7. SAILS & RIGGING

- MAST**
  - Marten Spars carbon fibre rig with 5 swept back carbon fibre spreaders
  - Ocean Yacht Systems continuous rod rigging
- BOOM**
  - Marten Spars carbon boom with Leisure Furl in boom furling
- FURLERS**
  - 2 x Reckman R6 hydraulic furlers on Genoa and Jib
- SAILS**
  - Mainsail 396 squ. metres
  - Genoa 564 squ. metres
  - Jib 366 squ. metres
  - Staysail 137 squ. Metres – Doyle sails (all 2013)
- WINCHES**
  - Rondal captive reel winches for all sail and running backstay controls
- RIGGING**
  - 8 year BSI standing rigging service - (Completed in 2019)
  - Full set of running rigging. Blade halyard, blade sheets, main sheets and running back stays - (Replaced 2019)
  - Staysail manual furl, KZ continuous line furler.
  - Stainless steel, double ram hydraulic boom vang.
- SAIL CONTROLS**
  - Helm stations - (Remodelled and re-wired in 2016)
  - Additional remote control for mainsail winches for raising and lowering sail

## 8. NAVIGATION EQUIPMENT

- MAGNETIC COMPASS**
  - 2 x Plastimo - (New 2019)
- GYRO COMPASS**
  - Sperry Marine Navigat 2100 fibre=optic
  - 1 x Control and display unit
  - 3 x C. Plath gyro repeaters
- AUTOMATIC PILOT**
  - 1 x Segatron
- ECHO SOUNDER**
  - 2 x Brookes & Gatehouse Hydra system for wind/log/depth – Forward & Aft
- RADAR**
  - 2 x Furuno - ARPA, FR2115B and FAR2117
- GPS**
  - 1 x Simrad GPS receiver
  - 2 x Furuno GPS receiver
- CHART PLOTTER**
  - Nav computer running Time Zero Software
  - Max Sea electronic charts and Admiralty paper charts
- AIS**
  - Furuno FA-100
- LOG**
  - Brookes & Gatehouse Hydra system
- WIND INSTRUMENTS**
  - Brookes & Gatehouse Hydra system
- BNWAS**
  - Net logic watchkeeper
  - 2 x Monitors (shows Nav computer, radar port, radar starboard, CCTV as requested)



**WHEELHOUSE/BRIDGE**

- 3 x B & G electronic displays
- 1 x AWA analogue indicator
- 2 x Radar controls
- AIS display
- Gyro display
- Autopilot interface
- MTU "Elektronik" interface
- BNWAS watchkeeper
- VHF and SSB radio
- Remote Sat-C distress button
- Tyco fire alarm controls
- Chart table and storage

**COCKPIT**

- 2 x Monitors (can show Nav computer, radar port, radar starboard, CCTV as requested)
- 2 x Electronic B & G displays
- 2 x Helm stations each featuring:
- 1 x Recessed monitor with electric raising cover (can show Nav computer, radar port, radar starb, CCTV as requested)
- 6 x B & G electronic displays
- Full sail controls
- Lighting controls
- Wheel

**HELM STATIONS**

- Autopilot
- Ships whistle
- MOB button
- Hydraulic kill button
- Gyro repeater
- Magnetic steering compass
- Independent back up Furuno GPS display
- Engine controls
- Bow and Stern thruster controls
- Matte black surface, LED back lit in various colour combinations (completely re-designed and re-wired in 2016 by Attest, Auckland)

**9. COMMUNICATION EQUIPMENT****SATCOM**

- 1 x T&T Inmarsat (Fleet 77)
- V-SAT supplying 24/7 Hi-speed Internet
- Inmarsat Sat C: Furuno Felcom 18 - (New 2019)

**VHF FIXED**

- Sailor 6222, 4 x Handsets (helm, bridge, capt office, crew mess)

**VHF PORTABLE**

- 1 x Icom IC M88
- 2 x Icom M35
- 2 x Icom CM1600E (GMDSS)

<b>SSB</b>	<ul style="list-style-type: none"> <li>○ 1 x Furuno FS 5000 SSB Radio Telephone</li> </ul>
<b>TELEPHONE EXCHANGE</b>	<ul style="list-style-type: none"> <li>○ 1 x Panasonic</li> </ul>
<b>MISCELLANEOUS</b>	<ul style="list-style-type: none"> <li>○ 2 x McMurdo EPIRBs</li> <li>○ 2 x SARTs</li> <li>○ New Engineers PC in control room running updated Idea planned maintenance system. (Feb 2020)</li> <li>○ Sat C, Fleet 77 and PC in ships office with scanner/printer</li> <li>○ 1 x iPad with nav computer screen mirroring</li> <li>○ Scanner/printer in crew mess</li> <li>○ WiFi throughout (Upgraded in 2018)</li> </ul>
<b>10. DECK EQUIPMENT</b>	
<b>ANCHOR WINDLASSES</b>	<ul style="list-style-type: none"> <li>○ 2 x Ascon Hydraulic</li> </ul>
<b>CAPSTANS</b>	<ul style="list-style-type: none"> <li>○ 2 x Custom Rondal aft warping winches / captans</li> <li>○ 2 x Custom Rondal foredeck hydraulic capstans</li> </ul>
<b>ANCHORS</b>	<ul style="list-style-type: none"> <li>○ 2 x 225kg stainless steel CQR anchors</li> </ul>
<b>ANCHOR CHAINS</b>	<ul style="list-style-type: none"> <li>○ 2 x 22mm stud linked galvanised steel chain</li> </ul>
<b>MOORING LINES</b>	<ul style="list-style-type: none"> <li>○ 14 x Lines various lengths and diameters</li> <li>○ 2 x Anchor snubbing lines</li> </ul>
<b>FENDERS</b>	<ul style="list-style-type: none"> <li>○ 10 x Black inflatable fenders and neoprene covers from Megafend (New 2019)</li> </ul>
<b>PASSERELLE</b>	<ul style="list-style-type: none"> <li>○ Fully retractable folding Staalart – Custom stainless steel/teak hydraulic</li> </ul>
<b>TENDER CRANE</b>	<ul style="list-style-type: none"> <li>○ Custom Staalart foredeck crane to launch guest tender, folds into deck locker, much faster than using a boom</li> <li>○ Custom Staalart aft deck crane to launch small tender when on aft deck, folds into deck locker</li> </ul>
<b>SIDE BOARDING LADDER</b>	<ul style="list-style-type: none"> <li>○ Staalart – Custom stainless steel/teak hydraulic fully retractable self-levelling steps</li> </ul>
<b>SWIMMING PLATFORM</b>	<ul style="list-style-type: none"> <li>○ Integral aft swimming platform, Stainless and teak removable swim ladder</li> </ul>
<b>AWNINGS</b>	<ul style="list-style-type: none"> <li>○ Composite hard top plus set of cockpit screens and shades - 2014</li> </ul>
<b>COVERS</b>	<ul style="list-style-type: none"> <li>○ 4 x Helm stations (2 x old, 2 x new 2019)</li> <li>○ 2 x Small tender (1 x old, 1 x new 2019)</li> <li>○ 1 x Guest tender</li> <li>○ 2 x Mast foot (1 x old, 1 x newer)</li> <li>○ 3 x Cockpit table covers</li> <li>○ 6 x Oiled teak folding deck chairs with cushions (Cushions new 2019)</li> </ul>

**FURNITURE**

- 2 x Low teak sun lounge side tables
- 1 x Folding teak 2-person dining table
- 2 x Teak deck towel / shoe boxes
- 2 x White sun loungers with blue cushions
- 9 x New folding camping chairs for beach
- 1 x Folding beach awning
- 1 x Beach BBQ grill
- 1 x Cool box
- 1 x Folding beach table

**SOFT  
FURNISHINGS**

- Cockpit cushions (Re-covered 2019)
- Helm seat cushions (Re-covered 2019)
- Aft deck seat cushions
- Pushpit and pulpit seat cushions

**HATCHES**

- Forward crew access hatch raises flush with air seal
- All deck lockers, engine room, lazette and forepeak access hatches are flush
- Aft cockpit sliding doors, pneumatic mechanism and belt driven with air seal

**MISCELLANEOUS**

- 1 x Cockpit drinks fridge
- 1 x Wooden boat hook
- 1 x Set of tender whips and stanchion base sockets

**11. ENTERTAINMENT EQUIPMENT**

- TV in every guest cabin with Independent plex system access and control.
- Projector and screen set up in cockpit "Home cinema" – New 2016
- Retractable TV in saloon
- Sonos app-controlled sound system throughout
- Plex app-controlled audio-visual system
- TVs: Master 56", Guest cabins - Port fwd 27", Stbd fwd 27", Stbd aft 32", Saloon 55" (retractable), Crew mess 19"

**12. GALLEY & LAUNDRY EQUIPMENT****GALLEY**

- 1 x Miele 5-burner induction hob – (New 2016)
- 1 x Miele oven/grill
- 1 x Sharp microwave
- 1 x Miele dishwasher (professional)
- 2 x Heinen & Hopmann custom fridges
- 2 x Heinen & Hopmann custom freezers
- 1 x ISE sink disposal unit

**LAUNDRY**

- 2 x 6kg Miele washing machines
- 2 x 6kg Miele Tumble driers
- 1 x Sink

**PANTRY**

- 1 x Jura E8 coffee machine
- 1 x Fisher and Paykal Fridge
- 1 x Hoshizaki ice maker

- DECK HOUSE**
  - 1 x Sink
  - 1 x Inbuilt drinks fridge

### 13. SECURITY & SAFETY EQUIPMENT

- SAFETY**
  - Equipped per REG yacht code for 14 persons
  - MCA LY1 certificate of compliance maintained and up to date

- ALARMS**
  - CCTV – 4 x cameras – mast and engine room
  - De Keizer general ships alarm with 50 functions
  - MTU engine control system
  - Fire alarm system

- FIRE FIGHTING**
  - Fixed fire systems in Engine Room and Control room
  - Galley vent fixed water mist system

### 14. TENDERS & WATERSPORTS EQUIPMENT

- TENDERS
  - 1 x 6.3m Smuggler RIB with 170hp inboard Hamilton jet drive, new 2014 (Overhauled 2019)
  - 1 x 3.60m Novurania with 20hp Yamaha F20B outboard
- WATERSPORTS
  - 1 x RTM Ocean Duo kayak
  - 3 x Paddles
  - 1 x Laser sailing dinghy
  - Fishing equipment: 4 x rods, 2 x push pit rod holders
  - 2 x Sets water skis
  - 2 x Wake boards
  - 2 x Sets wake board boots
  - 1 x Extendable ski line
  - 1 x Towable inflatable
  - 1 x Inflatable tow line
  - Buoyancy aids
  - 1 x Inflatable SUP board
  - 1 x Paddle
- DIVING
  - Snorkelling equipment for 9
  - 1 x Bauer dive compressor – (New 2017)
  - (5 x BCDs, 4 x Regulators, 4 x 12L Cylinders, 1 x 5L Cylinder, 1 x 2L Cylinder)

### 15. REFIT HISTORY

- 2019 REFIT – ORAMS, AUCKLAND, NEW ZEALAND
  - FLAG SURVEY
    - MCA 3rd Annual survey and MLC intermediate inspection completed
  - CLASS SURVEY
    - Lloyds; Annual, Hull Intermediate, Bottom, Screw shaft and Load line surveys completed
  - DECK
    - Sails cleaned and serviced by Doyle

- 1 x batten replaced, 2 x battens repaired
- New Main sheets, Blade sheets, Blade Halyard, Running back stays, docking lines re-leathered, tender chocks re-leathered, crash pump serviced, new helm station covers, helm station cushions re-covered, cockpit cushions re-covered
- PAINT
  - Full repaint in AwlGrip of topsides, Superstructure, Mast and Boom
  - New Antifouling
  - Re-varnished cockpit tables, cap rails and flag pole
- ENGINE W6 SERVICE
  - Full rebuild of main engine
  - Stripped down to the block, all components serviced / replaced as required to comply with survey
  - Engine block and all components painted
  - Exhaust system cleaned, flexi hoses replaced, exhaust pots painted
- GENERATORS
  - Top end removal and overhaul (10,000 hr service)
  - General tidy up of wiring and all sensors replaced
  - Engine blocks spray painted with two part Awl grip
- RIG
  - 8-year standing rigging BSI service
  - Full testing, service and replacement of rod rigging as per schedule
  - Staysail head swivel bearings replaced
  - Hydraulic Back stay rams, headsail halyard rams, vang, blade furler, reacher furler all serviced
  - Boom mandrille serviced and painted
  - Mast jack serviced and painted
  - New hydraulic hoses at vang, old crow'snest cover removed
  - New lightning cables fitted at mast head
  - New spreader CCTV cameras mounted
  - New airline pulled through for Ships whistle / horns
- SHAFT & PROPELLER
  - CCP propeller removed, stripped and re-built
  - Shaft pulled, shaft tube partly re-drilled, bearings re-aligned and replaced with standard size making future changes easier
  - Shaft seal cooling water flow monitors installed
- HYDRAULICS
  - All PTOs removed and serviced (bearings and seals changed and performance tested)
  - Side boarding ladder rams repaired
  - Headsail furler hoses replaced
- SEA CHESTS, PIPEWORK, HULL FITTINGS
  - Inspected and cleaned
  - Sea chests repainted and inside coated with belzona and anti-fouling

- BOW & STERN THRUSTERS
  - Both removed for servicing
  - Hull plate for bow thruster replaced
- FUEL TANKS
  - All 5 x fuel tanks opened, inspected and cleaned
  - 2 x Valves replaced
  - No major pitting found
- BLACK / GREY / FRESH WATER TANKS
  - Opened, cleaned, inspected, painted where necessary
  - No major pitting found
- WATERMAKERS
  - New membranes and extensive repairs made
- HAMANN SEWAGE SYSTEM
  - Overhauled
- ENGINE ROOM VENTILATION
  - Fans and dampers replaced with new
- GALLEY & LAUNDRY EXTRACTION
  - Professionally cleaned
- AIR CONDITIONING & FRIDGES
  - Majority of Air handler fans changed
  - Degraded air ducting replaced
  - Sea water A/C manifold replaced
  - Fridge freezer system gas leaks repaired
  - Gas changed to newer more Ozone friendly gas (R-449A)
- CABINETRY
  - Repairs to Starboard crew cabin bathroom floor
  - Port guest cabin shower base rebuilt
- GUEST TENDER
  - 600hr (4=year) Volvo engine service, new turbo installed
  - Hamilton jet serviced by manufacturer, repainted and lightweight aluminium intake grill installed
  - Tube valves replaced and new rubbing strake fitted
  - AIS installed
  - Underside Gel coat repairs
  - New set of cushions
  - Engine bay re-painted
  - Volvo Bluetooth connect device installed for easy user diagnostics
- INTERIOR / COSMETIC
  - Saloon carpet replaced, Interior varnish repairs and touch ups undertaken, cockpit and helm cushions all recovered with new high quality exterior fabrics
- SAFETY
  - General annual servicing / certification
  - New Sat C, Furuno Felcom 18

- New fire main pump
- New GMDSS handheld VHF radios
- New fire team UHF radios as per change in code
- New MOB light / smoke modules
- New rocket line thrower sets
- New aft crane fall line inc certification
- Med kit changed to MSOS
- New magnetic steering compasses installed and swung
- 4 x Scuba dive cylinders replaced with new
- 2 x Engine room ventilation fans and dampers replaced, engine room damper indicator lights fitted
- REFIT 2015-2016, COMPOSITE WORKS, LA CIOTAT, FRANCE
  - 15 YEAR CLASS SURVEY
    - Various inspections completed
    - Prop shaft removed and stern tube liner bored and new liner inserted, aligned and chock fasted
  - HYDRAULIC
    - Major project
    - All hydraulic hoses replaced (875m)
    - All hydraulic valve blocks replaced
  - HELM CONSOLES
    - Completely re fitted with new back lit panels, sealed switches and joysticks
    - Re-wired and installed new interface between helm consoles and existing yacht wiring
  - SEA WATER COOLANT PIPEWORK
    - Fitted with Ultrasonic antifoul protection
  - ELECTRICAL POWER
    - Shore power converter replaced
    - New cabling from shore power converter in Lazarrete to control room
  - THROUGH HULL FITTINGS
    - All replaced
  - REFRIGERATION
    - Copper pipe supplying gas from the chiller to the fridges replaced
  - TANKS
    - Inspections and cleaning
  - RIGGING
    - 5-year rigging service
  - FIRE PANEL
    - Re-wired
  - SIDE BOARDING LADDER
    - Sliders replaced and PLC re-programmed

## 16. COMMENTS

Built by the renowned Dutch sailing yacht shipyard Vitters and launched as African

Queen, Koo's interior design by Redman Whiteley Dixon is timeless but still contemporary, with neutral colours that have a wide appeal.

Designed and conceived with excellent storage and freezer space in order to go around the world as a luxurious bluewater world cruiser, in her current ownership Koo has fulfilled the original design brief admirably by voyaging extensively and circumnavigating the globe twice. Indeed she makes the perfect round the world platform, being big enough to be comfortable, yet compact enough for the running costs to be manageable.

Solidly built with the customary Dutch attention to comfort and quality, she is a quiet yacht with excellent noise and vibration characteristics, and with her extensive relaxation spaces both inside and out she makes a comfortable home on the water for both passengers and crew even for extended periods. This is especially true since the addition of a new carbon hardtop, providing welcome shade from the tropical sun under way, and which has had the additional benefit of updating her lines so that her look belies her build date.

With her carbon spars Koo is also no slouch around the race course, most recently winning her class at the 2017 St Barths Bucket.

Fresh from an extensive technical and cosmetic refit in Auckland with new paint, rig, decks, and rebuilt engines and generators, she is now in turnkey condition and available for a new owner to take on a new adventure.

---

## Исключения

При продаже яхты исключаются личные вещи владельца.

---

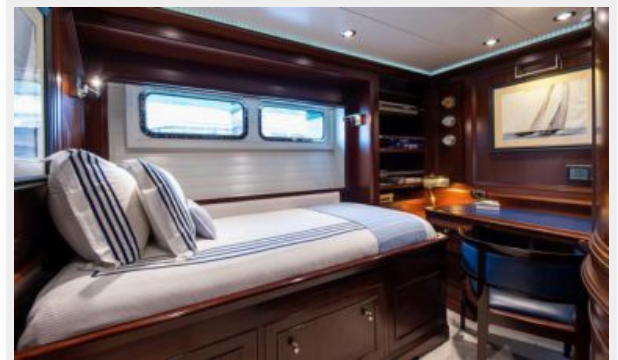
## Отказ от ответственности

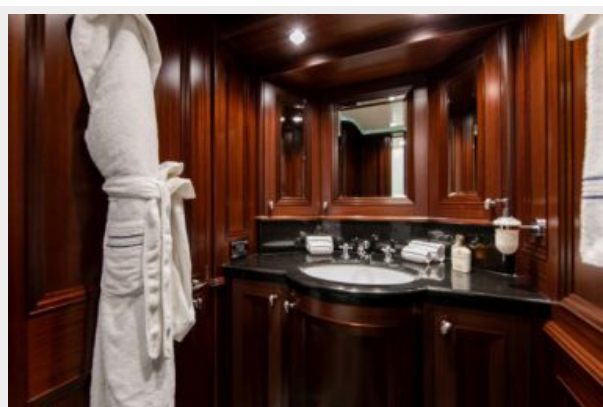
Компания предоставляет описание судна или яхты добросовестно, но не может гарантировать точность этой информации, а также не ручается за техническое состояние. Покупатель должен проинструктировать своих агентов или оценщиков исследовать представленную информацию более подробно, по собственному желанию. Продажа судна или яхты, изменение цены или снятие с продажи будет происходить без предварительного уведомления.

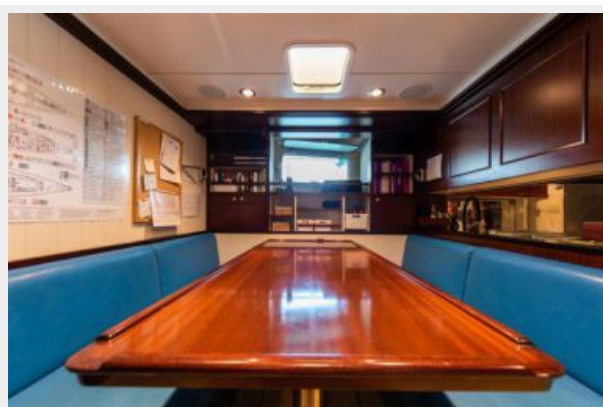


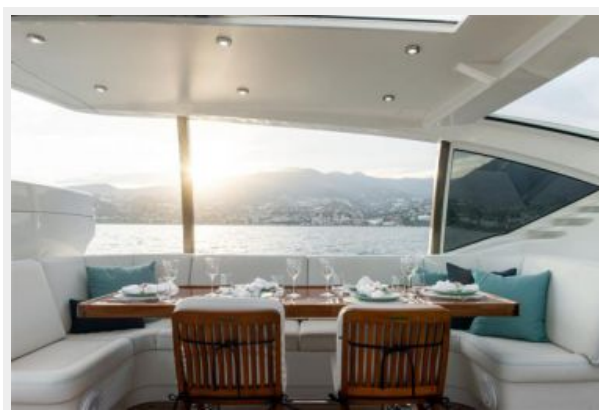
# ФОТОГРАФИИ



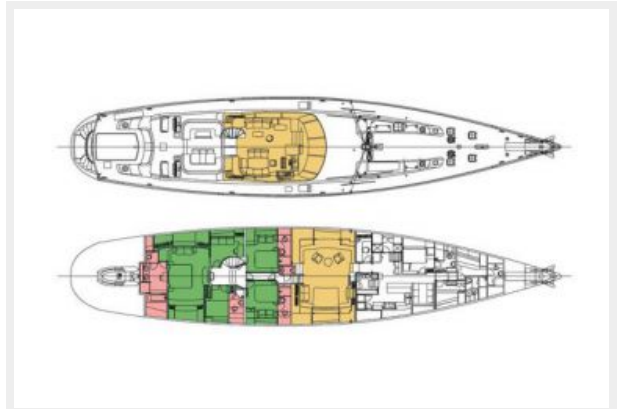












# КОНТАКТЫ

---

Андрей Шестаков (Andrey Shestakov) – ведущий яхтенный брокер отдела продаж яхт и судов компании Shestakov Yacht Sales Inc. Официальный представитель Shestakov Yacht Sales Inc. для русскоговорящих клиентов в центральном офисе компании в Майами/Форт Лодердейл/Флорида/США.

## Контактная информация

---

Email: [andrey@shestakovyachtsales.com](mailto:andrey@shestakovyachtsales.com)

Web: [shestakovyachtsales.com](http://shestakovyachtsales.com)

## Телефоны

---

Краснодарский край: **+7(918)465-66-44**

США, Майами, Флорида: **+1(954)274-4435**

## Время работы

---

Понедельник – Суббота: **9:00 - 21:00**  
EDT

Воскресенье: **Закрыто**

## Адрес

---



Harbour Towne Marina, 850 NE 3rd St,  
STE 213, Dania, FL 33004