

## MYSTIQUE — MACGREGOR



**Builder:** MACGREGOR

**Year Built:** 1990

**Model:** Cruising/Racing Sailboat

**Price:** PRICE ON APPLICATION

**Location:** United States

**LOA:** 65' 0" (19.81m)

**Beam:** 12' 0" (3.66m)

**Min Draft:** 6' 0" (1.83m)

**Max Draft:** 6' 2" (1.88m)

**Cruise Speed:** 7 Kts. (8 MPH)

**Max Speed:** 10.5 Kts. (12 MPH)

Our experienced yacht broker, Andrey Shestakov, will help you choose and buy a yacht that best suits your needs **Mystique — MACGREGOR** from our catalogue. Presently, at Shestakov Yacht Sales Inc., we have a wide variety of yachts available on our sale's list. We also work in close contact with all the big yacht manufacturers from all over the world.

If you would like to buy a yacht **Mystique — MACGREGOR** or would like help answering any questions concerning purchasing, selling or chartering a yacht, please call **+1(954)274-4435**

# TABLE OF CONTENTS

TABLE OF CONTENTS	2
SPECIFICATIONS	5
Overview	5
Basic Information	5
Dimensions	5
Speed, Capacities and Weight	5
Accommodations	6
Hull and Deck Information	6
Engine Information	6
DETAILED INFORMATION	7
MAIN DESCRIPTION	7
ENGINE & MECHANICAL	7
SAILS/RIG	7
Electronics	7
ELECTRICAL	8
DECK	8
DISCLAIMER	8
Exclusions	8
Disclaimer	8
PHOTOS	9
1 Cover photo	9
2 Layout	9
3 Dockside	9
4 Dockside(2)	9
5 Windvane	9
6 Cockpit	9
7 Cockpit(2)	10
8 Mainsheet winch	10

9 Helm	10
10 Helm(2)	10
11 Solar panels	10
12 Mast stbd	10
13 Mast portside	11
14 Spinaker pole track	11
16 Mainsail	11
15 Masthead	11
17 Reefing clutches	11
18 Foredeck	11
19 Chain locker	12
20 Large foredeck hatch	12
21 Companionway	12
22 Plotter	12
23 Pilothouse station	12
24 Pilothouse station(2)	12
25 Aft head	13
26 Aft head(2)	13
27 Aft master berth	13
28 Master berth looking fwd	13
29 Galley	13
30 Galley(2)	13
31 Refrigerator controller	14
32 Main cabin	14
33 Salon	14
34 Salon(2)	14
35 Fwd head	14
36 Fwd berth next to head	14
38 Engine	15

---

37 Fwd V-berth	15
39 Engine(2)	15
40 Engine(3)	15
42 Genset in Lazerette	16
41 Shaft seal	16
43 Lazerette aft	16
44 Autopilot ram	16
45 Steering quadrant	16
46 Exhust hoses	16
48 On the hard(2)	17
47 On the hard	17
49 Sailing	17
CONTACTS	18
Contact details	18
Telephones	18
Office hours	18
Address	18

---

# SPECIFICATIONS

---

## Overview

---

1990 Macgregor 65 Pilothouse MYSTIQUE was purchased in 2008 by her current owner and underwent a \$200,000 renovation in preparation for her voyage from California to New York. In June 2012 MYSTIQUE was then sailed to Europe, and on her return to the US she was singlehanded by her current owner. MYSTIQUE has a one-piece hand laid hull. There is no coring used in the construction of this boat. Her hull/deck joint is through-bolted every 4 inches. MYSTIQUE is the Pilothouse version and is equipped with a second helm inside for comfort in weather, and with her ICW capabilities you are not limited to just the ocean & inlets. DO NOT be misled by her price. From day one the current owner has maintained MYSTIQUE at a very high level, and has constantly upgraded her. If you are looking for a solid cruising boat, please come and have a look at her. By appointment only.

## Basic Information

---

**Category:** Cruising/Racing Sailboat

**Model Year:** 1990

**Year Built:** 1990

**Country:** United States

## Dimensions

---

**LOA:** 65' 0" (19.81m)

**Beam:** 12' 0" (3.66m)

**Min Draft:** 6' 0" (1.83m)

**Max Draft:** 6' 2" (1.88m)

**Clearance:** 63' 0" (19.20m)

## Speed, Capacities and Weight

---

**Cruise Speed:** 7 Kts. (8 MPH)

**Max Speed:** 10.5 Kts. (12 MPH)

**Displacement:** 32000 Pounds

**Water Capacity:** 200 Gallons

**Holding Tank:** 80 Gallons

**Fuel Capacity:** 260 Gallons

---

## Accommodations

---

**Total Cabins:** 1

**Total Berths:** 7

**Total Heads:** 2

---

## Hull and Deck Information

---

**Hull Material:** Fiberglass

---

## Engine Information

---

**Engines:** 1

**Manufacturer:** Yanmar

**Model:** 4LHA-HTE

**Engine Type:** Inboard

**Fuel Type:** Diesel

# DETAILED INFORMATION

## MAIN DESCRIPTION

1990 Macgregor 65 Pilothouse MYSTIQUE was purchased in 2008 by her current owner and underwent a \$200,000 renovation in preparation for her voyage from California to New York. In June 2012 MYSTIQUE was then sailed to Europe, and on her return to the US she was singlehanded by her current owner. MYSTIQUE has a one-piece hand laid hull. There is no coring used in the construction of this boat. Her hull/deck joint is through-bolted every 4 inches. MYSTIQUE is the Pilothouse version and is equipped with a second helm inside for comfort in weather, and with her ICW capabilities you are not limited to just the ocean & inlets. DO NOT be misled by her price. From day one the current owner has maintained MYSTIQUE at a very high level, and has constantly upgraded her. If you are looking for a solid cruising boat, please come and have a look at her. By appointment only.

## ENGINE & MECHANICAL

Yanmar 4LHA-HTE 140hp 5500hrs (5000 hour service done at Hinckley Stuart FL) Dual Racor 500 fuel filters with transfer pump and fuel polishing Transmission rebuilt March 2020 and is under warranty Dripless shaft seal 20" Max-Prop Northern Lights 6.5kw Generator 2586 hours (539 hours SMOH in 2016) Racor 500 fuel filter

## SAILS/RIG

Main 640 sqft New 2018 Fully Battened 3 reefs, Dimension Polyant ProRadial \$10,600 Genoa 968sqft New 2015 rollerfurling, Quantum HMW 8.5oz woven polyester \$5883 Solent 405sqft New 2019 rollerfurling, Mack Sails 10.7oz Challenge Marblehead Premium dacron, \$3500 Staysail 225sqft North Storm Staysail 10.5 oz hank on, good condition Sym Spinnaker 2000sqft with sock Harken Batten Cars and slides Navtec hydraulic backstay and boom vang All Shrouds replaced in 2019 26' spinnaker pole on track on front of mast New Ballenger Mast and Boom (height reduced by 5ft ICW friendly) Mainsail area increased by 20% with full batten design and increased roach Harken self-tailing winches (2) Primary 74.3 electric (2) Secondary 53.2 (2) Mast 40.2 Mainsheet 60.2 Spinlock line clutches (7) at mast for haylards and topping lift (3) built into boom for reef lines (4) at cockpit for preventer and staysail/solent sheets

## Electronics

\$53,000 of New Electronics with NMEA 2000 backbone (2014) Garmin 6212 MFD with Radar Garmin AIS 600 Garmin GPS 19x Garmin VHS 200 Icom VHF Icom 806 SSB Pactor Modem Raymarine Evolution autopilot acu400 (Type III rated for 70,000 lbs) Raymarine p70 auto pilot control nav station Raymarine p70 auto pilot control helm Raymarine handheld remote for

autopilot Raymarine 150 tridata at helm Raymarine 160 wind data at helm Raymarine I70 multi display at nav station

---

## ELECTRICAL

---

Electrical A/C 50 amp shore power inletNorthern Lights 6.5kw Genset Magnum 2800 Inverter/ChargerElectrical D/CLifeline AGM Batteries 800a/h total for House (Jan 2020)Engine Start group 27 BatteryGenset Start group 27 Battery(2) 125 watt Solar Panels110 amp Alternator

---

## DECK

---

Simpson Lawrence V2000 Electric WindlassRocna 40 Anchor w/ 275' 5/16 HT Chain (2018)Fortress 55 FXFrigoboat 12 volt Refrigeration (water cooled)Grunert 120 volt Freezer with cold plate 1 hour per day run time (New compressor 2020)Upgraded custom milled Delrin rudder bearing and structural reinforcementBottom paint stripped & 5 coats of epoxy barrier applied (Zahnisers' in 2012)Force 10 four burner propane stove/ovenDiesel heatlsotherm 13gal stainless water heater with engine loopBimini with DodgerSolid railing installed around cockpit for safety

---

## DISCLAIMER

---

The Company offers the details of this vessel in good faith but cannot guarantee or warrant the accuracy of this information nor warrant the condition of the vessel. A buyer should instruct his agents, or his surveyors, to investigate such details as the buyer desires validated. This vessel is offered subject to prior sale, price change, or withdrawal without notice.

---

## Exclusions

---

Owner's personal belongings.

---

## Disclaimer

---

The Company offers the details of this vessel or yacht in good faith but cannot guarantee or warrant the accuracy of this information nor warrant the condition of the vessel. A buyer should instruct his representatives, agents, or his surveyors, to investigate such details as the buyer desires validated. This vessel or yacht is offered subject to prior sale, price change, or withdrawal without notice.

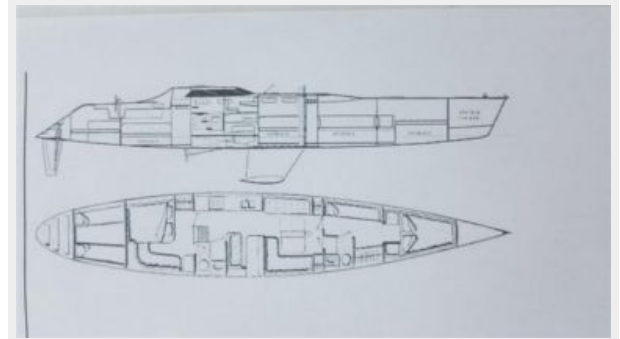


# PHOTOS

1 Cover photo



2 Layout



3 Dockside



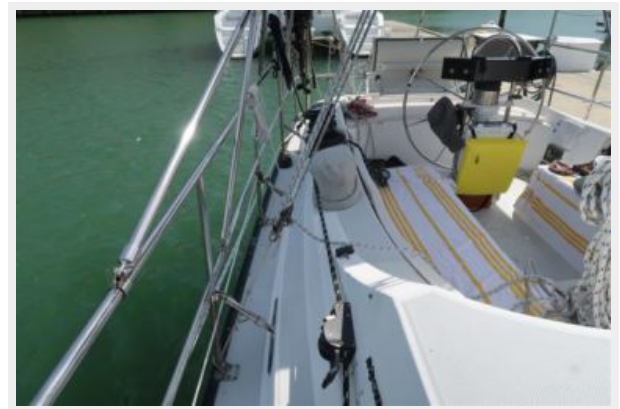
4 Dockside(2)



5 Windvane



6 Cockpit



**7 Cockpit(2)**



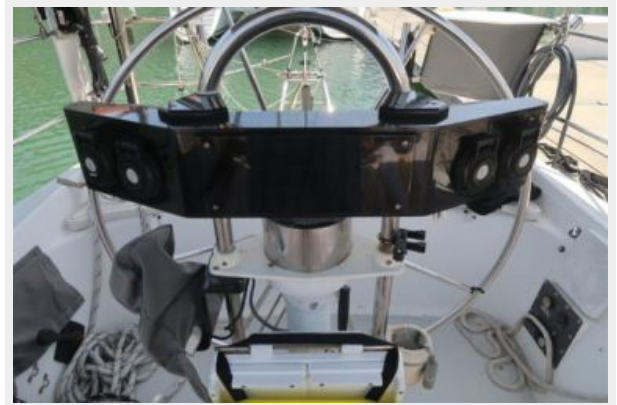
**8 Mainsheet winch**



**9 Helm**



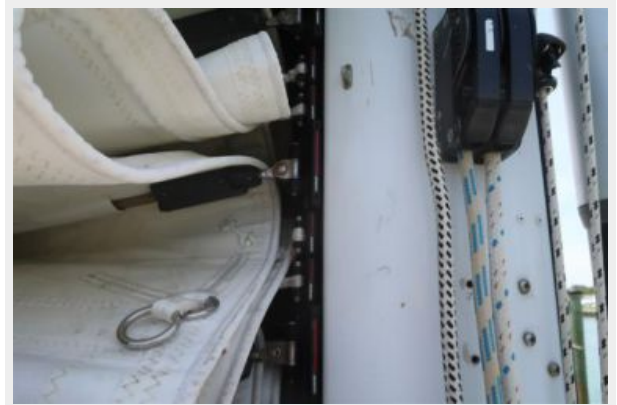
**10 Helm(2)**



**11 Solar panels**



**12 Mast stbd**





**13 Mast portside**



**14 Spiner pole track**



**16 Mainsail**



**15 Masthead**



**17 Reefing clutches**



**18 Foredeck**



19 Chain locker



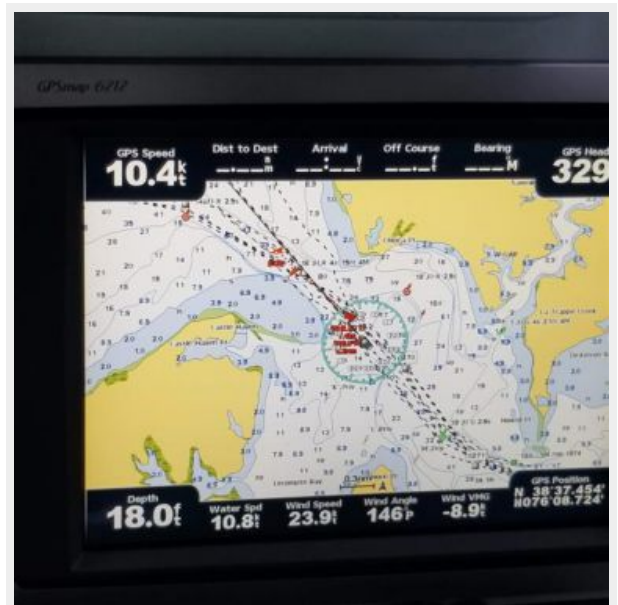
20 Large foredeck hatch



21 Companionway



22 Plotter



23 Pilothouse station



24 Pilothouse station(2)





25 Aft head



26 Aft head(2)



27 Aft master berth



28 Master berth looking fwd



29 Galley



30 Galley(2)



**31 Refer controller**



**32 Main cabin**



**33 Salon**



**34 Salon(2)**



**35 Fwd head**



**36 Fwd berth next to head**





37 Fwd V-berth



38 Engine



39 Engine(2)



40 Engine(3)



41 Shaft seal



42 Genset in Lazerette



43 Lazerette aft



44 Autopilot ram



45 Steering quadrant



46 Exhaust hoses





47 On the hard



48 On the hard(2)



49 Sailing



---

# CONTACTS

---

Andrey Shestakov, leading yacht broker of the sales department of Shestakov Yacht Sales Inc. Shestakov Yacht Sales Inc., the official representative of the Miami/Fort Lauderdale FL headquarters.

---

## Contact details

---

Email: [andrey@shestakovyachtsales.com](mailto:andrey@shestakovyachtsales.com)

Web: [shestakovyachtsales.com/en/](http://shestakovyachtsales.com/en/)

---

## Telephones

---

USA: +1(954)274-4435

---

## Office hours

---

Monday – Saturday: **9:00 - 21:00** EDT

Sunday: **closed**

---

## Address

---



Harbour Towne Marina, 850 NE 3rd St,  
STE 213, Dania, FL 33004