

MYSTIQUE — MACGREGOR



Судостроитель: MACGREGOR

Год постройки: 1990

Модель: Cruising/Racing Sailboat

Цена: **ЦЕНА ЯХТЫ ПО ЗАПРОСУ**

Местонахождение: United States

Длина общая: 65' 0" (19.81m)

Ширина: 12' 0" (3.66m)

Мин. осадка: 6' 0" (1.83m)

Макс. осадка: 6' 2" (1.88m)

Крейс. скорость: 7 Kts. (8 MPH)

Макс. скорость: 10.5 Kts. (12 MPH)

Купить **Mystique — MACGREGOR** а также выбрать подходящую вам яхту из нашего каталога яхт вам поможет опытный яхтенный брокер Андрей Шестаков. На сегодняшний день компания **Shestakov Yacht Sales Inc.** имеет большое количество яхт в собственном списке продаж, а также тесно сотрудничает со всеми крупными яхтенными производителями по всему миру.

Для того чтобы купить яхту **Mystique — MACGREGOR** а также проконсультироваться по любому вопросу связанному с покупкой, продажей, чартером яхт позвоните по телефону **+7(918)465-66-44**.

ОГЛАВЛЕНИЕ

| | |
|-------------------------------|----|
| ОГЛАВЛЕНИЕ | 2 |
| ХАРАКТЕРИСТИКИ | 5 |
| Обзор | 5 |
| Основная информация | 5 |
| Размеры | 5 |
| Скорость, вместимость и масса | 5 |
| Размещение | 6 |
| Корпус и палуба | 6 |
| Информация о двигателе | 6 |
| ПОДРОБНОЕ ОПИСАНИЕ | 7 |
| MAIN DESCRIPTION | 7 |
| ENGINE & MECHANICAL | 7 |
| SAILS/RIG | 7 |
| Electronics | 7 |
| ELECTRICAL | 8 |
| DECK | 8 |
| DISCLAIMER | 8 |
| Исключения | 8 |
| Отказ от ответственности | 8 |
| ФОТОГРАФИИ | 9 |
| 1 Cover photo | 9 |
| 2 Layout | 9 |
| 3 Dockside | 9 |
| 4 Dockside(2) | 9 |
| 5 Windvane | 9 |
| 6 Cockpit | 9 |
| 7 Cockpit(2) | 10 |
| 8 Mainsheet winch | 10 |

| | |
|-----------------------------|----|
| 9 Helm | 10 |
| 10 Helm(2) | 10 |
| 11 Solar panels | 10 |
| 12 Mast stbd | 10 |
| 13 Mast portside | 11 |
| 14 Spinnaker pole track | 11 |
| 16 Mainsail | 11 |
| 15 Masthead | 11 |
| 17 Reefing clutches | 11 |
| 18 Foredeck | 11 |
| 19 Chain locker | 12 |
| 20 Large foredeck hatch | 12 |
| 21 Companionway | 12 |
| 22 Plotter | 12 |
| 23 Pilothouse station | 12 |
| 24 Pilothouse station(2) | 12 |
| 25 Aft head | 13 |
| 26 Aft head(2) | 13 |
| 27 Aft master berth | 13 |
| 28 Master berth looking fwd | 13 |
| 29 Galley | 13 |
| 30 Galley(2) | 13 |
| 31 Refrigerator controller | 14 |
| 32 Main cabin | 14 |
| 33 Salon | 14 |
| 34 Salon(2) | 14 |
| 35 Fwd head | 14 |
| 36 Fwd berth next to head | 14 |
| 38 Engine | 15 |

| | |
|------------------------|-----------|
| 37 Fwd V-berth | 15 |
| 39 Engine(2) | 15 |
| 40 Engine(3) | 15 |
| 42 Genset in Lazerette | 16 |
| 41 Shaft seal | 16 |
| 43 Lazerette aft | 16 |
| 44 Autopilot ram | 16 |
| 45 Steering quadrant | 16 |
| 46 Exhaust hoses | 16 |
| 48 On the hard(2) | 17 |
| 47 On the hard | 17 |
| 49 Sailing | 17 |
| КОНТАКТЫ | 18 |
| Контактная информация | 18 |
| Телефоны | 18 |
| Время работы | 18 |
| Адрес | 18 |

ХАРАКТЕРИСТИКИ

Обзор

1990 Macgregor 65 Pilothouse MYSTIQUE was purchased in 2008 by her current owner and underwent a \$200,000 renovation in preparation for her voyage from California to New York. In June 2012 MYSTIQUE was then sailed to Europe, and on her return to the US she was singlehanded by her current owner. MYSTIQUE has a one-piece hand laid hull. There is no coring used in the construction of this boat. Her hull/deck joint is through-bolted every 4 inches. MYSTIQUE is the Pilothouse version and is equipped with a second helm inside for comfort in weather, and with her ICW capabilities you are not limited to just the ocean & inlets. DO NOT be misled by her price. From day one the current owner has maintained MYSTIQUE at a very high level, and has constantly upgraded her. If you are looking for a solid cruising boat, please come and have a look at her. By appointment only.

Основная информация

| | |
|--|------------------------------|
| Тип судна: Cruising/Racing Sailboat | Модельный год: 1990 |
| Год постройки: 1990 | Страна: United States |

Размеры

| | |
|-------------------------------------|------------------------------------|
| Длина общая: 65' 0" (19.81m) | Ширина: 12' 0" (3.66m) |
| Мин. осадка: 6' 0" (1.83m) | Макс. осадка: 6' 2" (1.88m) |
| Трапы: 63' 0" (19.20m) | |

Скорость, вместимость и масса

| | |
|--|---|
| Крейс. скорость: 7 Kts. (8 MPH) | Макс. скорость: 10.5 Kts. (12 MPH) |
| Водоизмещение: 32000 Pounds | Вместимость воды: 200 Gallons |
| Вместимость сточного бака: 80 Gallons | Объем топливного бака: 260 Gallons |

Размещение

Всего кают: 1

Всего коек: 7

Всего ком. состава: 2

Корпус и палуба

Материал корпуса: Fiberglass

Информация о двигателе

Двигатели: 1

Производитель: Yanmar

Модель: 4LHA-HTE

Тип двигателя: Inboard

Тип топлива: Diesel

ПОДРОБНОЕ ОПИСАНИЕ

MAIN DESCRIPTION

1990 Macgregor 65 Pilothouse MYSTIQUE was purchased in 2008 by her current owner and underwent a \$200,000 renovation in preparation for her voyage from California to New York. In June 2012 MYSTIQUE was then sailed to Europe, and on her return to the US she was singlehanded by her current owner. MYSTIQUE has a one-piece hand laid hull. There is no coring used in the construction of this boat. Her hull/deck joint is through-bolted every 4 inches. MYSTIQUE is the Pilothouse version and is equipped with a second helm inside for comfort in weather, and with her ICW capabilities you are not limited to just the ocean & inlets. DO NOT be misled by her price. From day one the current owner has maintained MYSTIQUE at a very high level, and has constantly upgraded her. If you are looking for a solid cruising boat, please come and have a look at her. By appointment only.

ENGINE & MECHANICAL

Yanmar 4LHA-HTE 140hp 5500hrs (5000 hour service done at Hinckley Stuart FL) Dual Racor 500 fuel filters with transfer pump and fuel polishing Transmission rebuilt March 2020 and is under warranty Dripless shaft seal 20" Max-Prop Northern Lights 6.5kw Generator 2586 hours (539 hours SMOH in 2016) Racor 500 fuel filter

SAILS/RIG

Main 640 sqft New 2018 Fully Battened 3 reefs, Dimension Polyant ProRadial \$10,600 Genoa 968sqft New 2015 rollerfurling, Quantum HMW 8.5oz woven polyester \$5883 Solent 405sqft New 2019 rollerfurling, Mack Sails 10.7oz Challenge Marblehead Premium dacron, \$3500 Staysail 225sqft North Storm Staysail 10.5 oz hank on, good condition Sym Spinnaker 2000sqft with sock Harken Batten Cars and slides Navtec hydraulic backstay and boom vang All Shrouds replaced in 2019 26' spinnaker pole on track on front of mast New Ballenger Mast and Boom (height reduced by 5ft ICW friendly) Mainsail area increased by 20% with full batten design and increased roach Harken self-tailing winches (2) Primary 74.3 electric (2) Secondary 53.2 (2) Mast 40.2 Mainsheet 60.2 Spinlock line clutches (7) at mast for haylards and topping lift (3) built into boom for reef lines (4) at cockpit for preventer and staysail/solent sheets

Electronics

\$53,000 of New Electronics with NMEA 2000 backbone (2014) Garmin 6212 MFD with Radar Garmin AIS 600 Garmin GPS 19x Garmin VHS 200 Icom VHF Icom 806 SSB Pactor Modem Raymarine Evolution autopilot acu400 (Type III rated for 70,000 lbs) Raymarine p70 auto pilot control nav station Raymarine p70 auto pilot control helm Raymarine handheld remote for

autopilot Raymarine 150 tridata at helm Raymarine 160 wind data at helm Raymarine I70 multi display at nav station

ELECTRICAL

Electrical A/C 50 amp shore power inletNorthern Lights 6.5kw Genset Magnum 2800 Inverter/ChargerElectrical D/CLifeline AGM Batteries 800a/h total for House (Jan 2020)Engine Start group 27 BatteryGenset Start group 27 Battery(2) 125 watt Solar Panels110 amp Alternator

DECK

Simpson Lawrence V2000 Electric WindlassRocna 40 Anchor w/ 275' 5/16 HT Chain (2018)Fortress 55 FXFrigoboat 12 volt Refrigeration (water cooled)Grunert 120 volt Freezer with cold plate 1 hour per day run time (New compressor 2020)Upgraded custom milled Delrin rudder bearing and structural reinforcementBottom paint stripped & 5 coats of epoxy barrier applied (Zahnisers' in 2012)Force 10 four burner propane stove/ovenDiesel heatlsotherm 13gal stainless water heater with engine loopBimini with DodgerSolid railing installed around cockpit for safety

DISCLAIMER

The Company offers the details of this vessel in good faith but cannot guarantee or warrant the accuracy of this information nor warrant the condition of the vessel. A buyer should instruct his agents, or his surveyors, to investigate such details as the buyer desires validated. This vessel is offered subject to prior sale, price change, or withdrawal without notice.

Исключения

При продаже яхты исключаются личные вещи владельца.

Отказ от ответственности

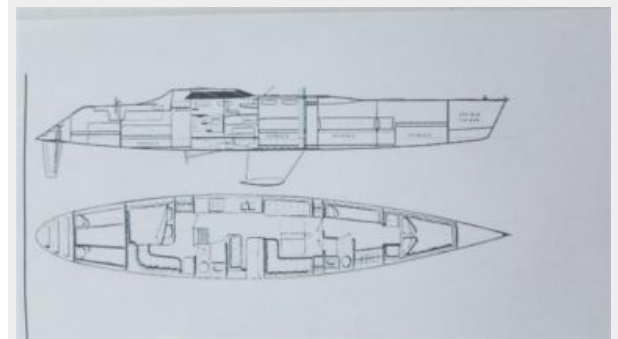
Компания предоставляет описание судна или яхты добросовестно, но не может гарантировать точность этой информации, а также не ручается за техническое состояние. Покупатель должен проинструктировать своих агентов или оценщиков исследовать представленную информацию более подробно, по собственному желанию. Продажа судна или яхты, изменение цены или снятие с продажи будет происходить без предварительного уведомления.

ФОТОГРАФИИ

1 Cover photo



2 Layout



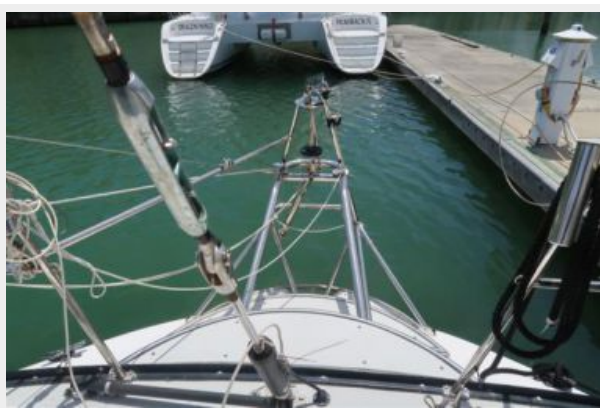
3 Dockside



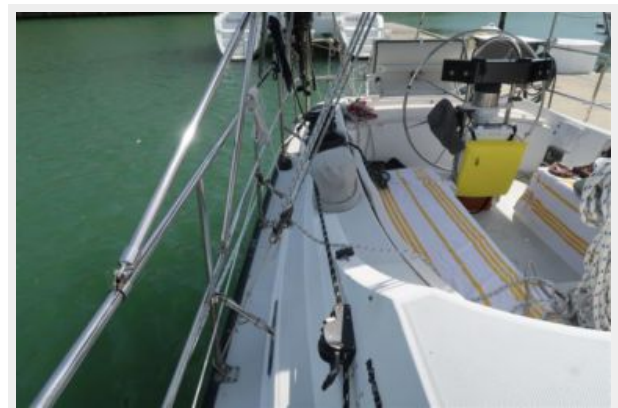
4 Dockside(2)



5 Windvane



6 Cockpit



7 Cockpit(2)



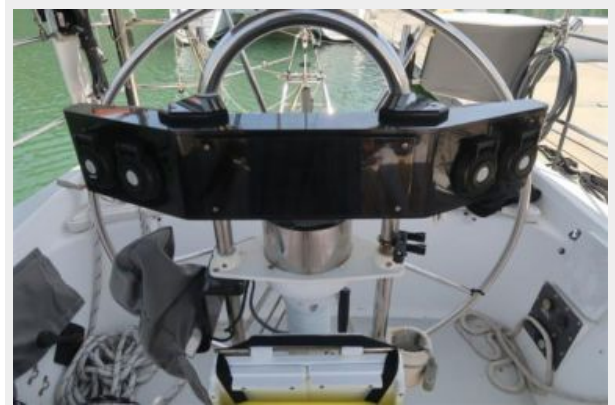
8 Mainsheet winch



9 Helm



10 Helm(2)



11 Solar panels



12 Mast stbd



13 Mast portside



14 Spinker pole track



16 Mainsail



15 Masthead



17 Reefing clutches



18 Foredeck



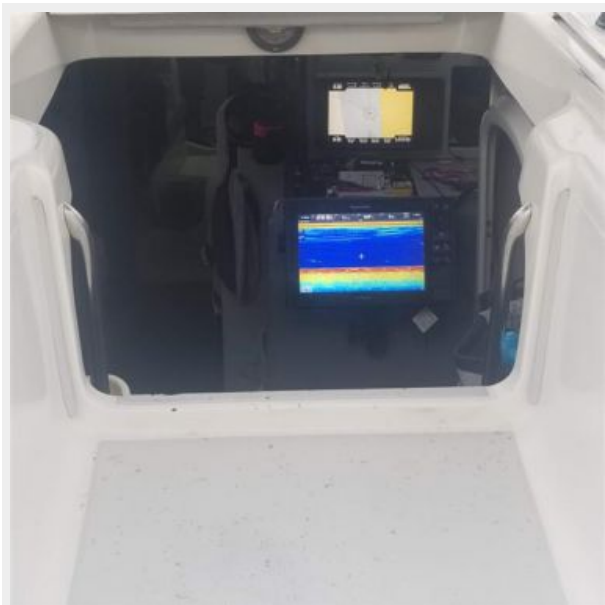
19 Chain locker



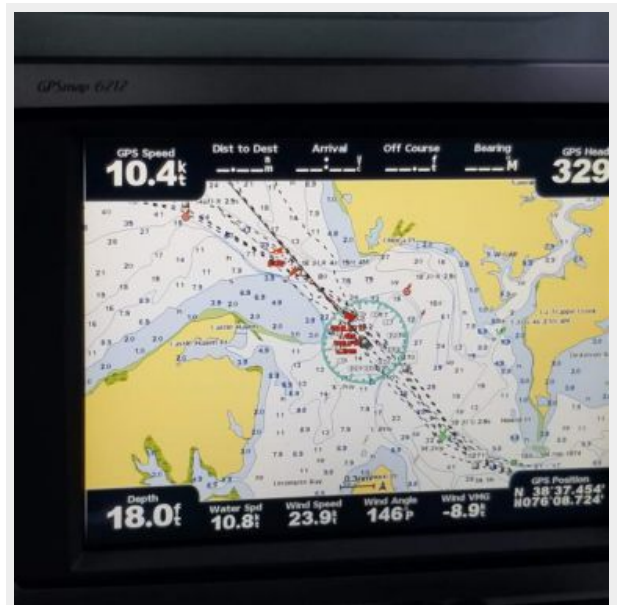
20 Large foredeck hatch



21 Companionway



22 Plotter



23 Pilothouse station



24 Pilothouse station(2)



25 Aft head



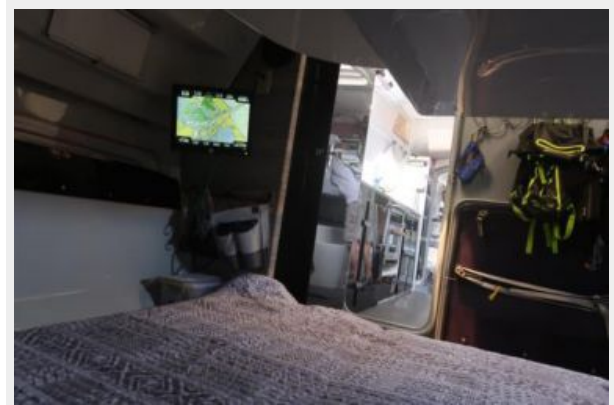
26 Aft head(2)



27 Aft master berth



28 Master berth looking fwd



29 Galley



30 Galley(2)



31 Refer controller



32 Main cabin



33 Salon



34 Salon(2)



35 Fwd head



36 Fwd berth next to head



37 Fwd V-berth



38 Engine



39 Engine(2)



40 Engine(3)



41 Shaft seal



42 Genset in Lazerette



43 Lazerette aft



44 Autopilot ram



45 Steering quadrant



46 Exhaust hoses



47 On the hard



48 On the hard(2)



49 Sailing



КОНТАКТЫ

Андрей Шестаков (Andrey Shestakov) – ведущий яхтенный брокер отдела продаж яхт и судов компании Shestakov Yacht Sales Inc. Официальный представитель Shestakov Yacht Sales Inc. для русскоговорящих клиентов в центральном офисе компании в Майами/Форт Лодердейл/Флорида/США.

Контактная информация

Email: andrey@shestakovyachtsales.com

Web: shestakovyachtsales.com

Телефоны

Краснодарский край: **+7(918)465-66-44**

США, Майами, Флорида: **+1(954)274-4435**

Время работы

Понедельник – Суббота: **9:00 - 21:00**
EDT

Воскресенье: **Закрето**

Адрес



Harbour Towne Marina, 850 NE 3rd St,
STE 213, Dania, FL 33004