

MOONBEAM OF FIFE III — WILLIAM FIFE AND SON



Builder: WILLIAM FIFE AND SON

Year Built: 1903

Model: Classic Yacht

Price: PRICE ON APPLICATION

Location: France

LOA: 98' 6" (30.00m)

Beam: 15' 6" (4.72m)

Max Draft: 10' 8" (3.25m)

Cruise Speed: 7 Kts. (8 MPH)

Max Speed: 8 Kts. (9 MPH)

Our experienced yacht broker, Andrey Shestakov, will help you choose and buy a yacht that best suits your needs **Moonbeam Of Fife III — WILLIAM FIFE AND SON** from our catalogue. Presently, at Shestakov Yacht Sales Inc., we have a wide variety of yachts available on our sale's list. We also work in close contact with all the big yacht manufacturers from all over the world.

If you would like to buy a yacht **Moonbeam Of Fife III — WILLIAM FIFE AND SON** or would like help answering any questions concerning purchasing, selling or chartering a yacht, please call **+1(954)274-4435**

TABLE OF CONTENTS

TABLE OF CONTENTS	2
SPECIFICATIONS	4
Basic Information	4
Dimensions	4
Speed, Capacities and Weight	4
Accommodations	4
Hull and Deck Information	4
Engine Information	5
DETAILED INFORMATION	6
Detailed Description	6
Exclusions	11
Disclaimer	11
PHOTOS	12
a4-1	12
a4-2	12
arriere	12
a4-6	12
cuisine	12
8	12
moonbeam corsica classic 078	13
couloir	13
st.trope 2012-331	13
st.trope 2012-352	13
2	13
st.trope 2012-453	13
moonbeam of fife ga and plans 1	14
moonbeam of fife ga and plans 2	14
moonbeam of fife sail plan	14

CONTACTS	15
Contact details	15
Telephones	15
Office hours	15
Address	15

SPECIFICATIONS

Basic Information

Category: Classic Yacht	Model Year: 1903
Year Built: 1903	Country: France

Dimensions

LOA: 98' 6" (30.00m)	LWL: 65' 1" (19.83m)
LOD: 81' 6" (24.84m)	Beam: 15' 6" (4.72m)
Max Draft: 10' 8" (3.25m)	

Speed, Capacities and Weight

Cruise Speed: 7 Kts. (8 MPH)	Cruise Speed Range: 260
Max Speed: 8 Kts. (9 MPH)	Displacement: 132277.3572 Pounds
Gross Tonnage: 41.64 Pounds	Water Capacity: 158.5032312 Gallons
Fuel Capacity: 132.086026 Gallons	

Accommodations

Total Cabins: 2	Sleeps: 4
Crew Sleeps: 4	

Hull and Deck Information

Hull Material: Wood	Deck Material: Teak
Hull Designer: William Fife Jr	Exterior Designer: William Fife Jr

Engine Information

Engines: 1

Manufacturer: Perkins

Fuel Type: Diesel

DETAILED INFORMATION

Detailed Description

```
#edmiston-espec { font-family: 'Helvetica Neue LT Std', 'Sans'; font-weight: 200; font-style:
normal; text-align: justify; text-justify: inter-word; line-height: 1.5em; color: #444; } #edmiston-
espec table { border-spacing: 0px; border-collapse: collapse; } #edmiston-espec td { text-align:
left; vertical-align: top; padding: 0px; margin: 0px; line-height: 1.5em; } #edmiston-espec th { text-
align: left; vertical-align: top; padding: 0px; margin: 0px; width: 5cm; } #edmiston-espec h1 { font-
family: 'Times New Roman','Serif'; color: #DB001E; } #edmiston-espec h2 { font-family: 'Times
New Roman','Serif'; color: #DB001E; } #edmiston-espec h3 { font-family: 'Times New
Roman','Serif'; color: #222; } #edmiston-espec ul { list-style: none; margin: 0; padding: 0 0 0 20px;
} #edmiston-espec li.bullet { list-style: disc; }
```

1. MAIN CHARACTERISTICS

TYPE	◦ Classic Sailing Yacht
MODEL	◦ Gaff cutter
HULL NO.	◦ 491
BUILDER	◦ Fairlie, Scotland (William Fife)
NAVAL ARCHITECT	◦ William Fife Jr
EXTERIOR DESIGN	◦ William Fife Jr
YEAR	◦ 1903
REFIT	◦ 2004-2006-2017
CONSTRUCTION	◦ Hull -Steel floors oak frames & Pitch pine planking ◦ Superstructures - Teak ◦ Carvel planked hull and teak decks
CLASSIFICATION	◦ Lloyd's Register; French Commercial Vessel under RIF Class
COLOUR	◦ White hull, varnished teak superstructure, teak deck
FLAG	◦ France
KEEL	◦ 19 tons
GT	◦ 41.64 tons
DISPLACEMENT	◦ 60 tons

2. DIMENSIONS

LOA	◦ 30.00m / 98'5"
LOD	◦ 24.84m / 81'6"
LWL	◦ 19.83m / 65'1"
BEAM	◦ 4.72m / 15'6"
DRAFT	◦ 3.25m / 10'7"

3. SPEED & RANGE UNDER POWER

MAXIMUM SPEED	◦ 8 knots
----------------------	-----------

CRUISING SPEED

- 7 knots

FUEL CONSUMPTION

- 12/14 litres/ hours

RANGE

- 260 nm @ 7 knots

4. CAPACITIES

ACCOMMODATION

- 4 x Guests in 1 twin & 1 double cabin

CREW

- 4 x Crew in 1 single cabin & 1 foc'sle for 3

FUEL

- 500 litres / 132 US gallons

FRESH WATER

- 600 litres / 159 US gallons

GREY WATER

- 150 litres / 40 US gallons

BLACK WATER

- 200 litres / 53 US gallons

5. ACCOMMODATION

INTERIOR

- All accommodation from matching mahogany

SALOON

- U shape settee on starboard with a large dining table – settee on port and numerous lockers

OWNER'S**CABIN**

- Owner's cabin in the centre on starboard
- with a double bed

GUEST CABINS

- 'Ladies Cabin' is aft with two single beds

SHOWER

- Guest and Owner's cabin have their own bathroom

ROOM/HEAD

- Captain's cabin and Crew quarter share one bathroom

CAPTAIN'S**CABIN**

- Starboard of the saloon with a single bed

CREW**QUARTERS**

- In the forepeak with 3 bunks

GALLEY

- Opposite of the captain's cabin forward of the
- saloon on port

CHART TABLE

- Opposite of the main stairs on port with its own door

DECK AND**COCKPIT**

- 2 x Skylights

COMPANION**WAY**

- Aft w/ a stair giving access to the main accommodation
- Forward w/ a ladder giving access to the crew quarters

ENGINE ROOM

- Main engine under the main companion way stair
- Generator & Boiler by Galley

6. HISTORY

The story of the Moonbeams began in 1858 with Moonbeam I & II. In 1902 Charles Plumtree Johnson, an eminent London lawyer, decided to go back to William Fife for the creation of his 3rd yacht. Taking into account his revised sailing plans, he wanted to race under the new RORC rule which included sailing vessels with fitted-out interiors. Moonbeam III (now Moonbeam of Fife) was launched as a yawl in 1903, hull n° 491 to leave the Fife yard.

The result was a magnificent yacht which has now become one of the most successful and recognised classic in the world. Her streamlined shape, handy size and large sail area make for an extremely beautiful, comfortable and fast vessel.

◦ MOONBEAM, MORE THAN A CENTURY OF HISTORY

- 1903 - The birth of Moonbeam III N° 491 with Charles Plumtree Johnson.
- 1920 - The yacht is sold on to Mr Fernand Maroni a Parisian businessman who owns two other boats Thaïs (ex Bamba) and Nixie. She is then re-named Eblis. After just a season of regattas in Brest, she leaves Brittany for the Mediterranean and Cannes becomes her home port. The yacht continues to take part in numerous regattas and wins the Mediterranean Cruising Race in 1928.
- 1924 - Mr Fernand Maroni decides to modernise Eblis and has a four-cylinder Ballot petrol engine installed at the level of the fore mast, helping him to get through the calm waters of the Mediterranean and to manoeuvre her in port.
- 1928 - Eblis participates in cruiser racer events in the Mediterranean and wins on several occasions.
- 1930 - At the beginning of the 1930's, Mr Fernand Maroni sells Eblis to Mr Raymond Philippe. The yacht stays in Cannes.
- 1947 - The yacht is then sold to Mr Félix Amiot, the famous aeroplane constructor. She then goes to the Cotentin region (North West of France, near Cherbourg) where she lies on hard for 24 years in CMN the owner's ship yard.
- 1971 - Repurchased and briefly restored by Mrs Anthony, the yacht is based in the Aegean Sea, where she is put out for charter in 1974.
- 1979 - Doctor Poncia becomes the yacht's new owner. Moonbeam is taken by cargo ship to England where she will spend almost 10 years being restored at the Camper and Nicholson shipyard. It is now recognised that this authentic restoration is the first of the new approach to preserving the history of yachting.
- 1988 - From now on Moonbeam becomes a gaff cutter. The helm is now fitted with a wheel and she is equipped with winches and electronic navigational equipment. Down below there is little change to the beautiful mahogany interior.
- 1989 - Moonbeam is sold at auction by Sotheby's. She passes through the hands of several owners of different nationalities, celebrating her 100th birthday in grand style in 2003 on the island of Porquerolles.
- 2005/6 - Moonbeam returns to the Southampton yard famous for its work on Fife yachts, Fairlie Restorations, and has a lot of good work done. This included, but not limited to: New Deck; stem; some frames, planks and floors; electrical and plumbing work; s/s Tanks; Perkins engine; Covering board; Bulwarks; All cabin soles; galley; all varnish work; Boom, Gaff etc., all replaced new by their superior craftsmen
- 2016 - Moonbeam of Fife is again purchased at auction by the present custodian, and a new and happy chapter in her long and eventful history begins.

◦ RACING RESULTS

- Since her launch all those years ago, Moonbeam has excelled both on the

regatta circuit and as a fast cruising yacht. Her regatta results are too plentiful to list here in full, but she is rarely off the podium. Between 2007 and 2011 Moonbeam of Fife took part in virtually every major Mediterranean regatta on the circuit, always coming in the top 3. After a slack period due to the owners ill health, from 2016 she again took part in many regattas, with results as follows:

- Antibes
 - 2016 - 3rd
 - 2017 - 2nd
 - 2018 - 3rd
 - 2019 - 2nd
- Barcelona
 - 2016 - 1st
 - 2017 - 1st
 - 2018 - 3rd
 - 2019 - 1st
- Argentario
 - 2017 - 1st
 - 2018 - 1st
- St Tropez
 - 2016 - 2nd
 - 2017 - 1st
 - 2018 - 11th
 - 2019 - 3rd

7. MECHANICAL EQUIPMENT

ENGINES	◦ 1 x 135 Hp Perkins – new 2004/Overhaul 2017
ENGINE HOURS	◦ Approx. 5000 hours - January 2020
GENERATORS	◦ 1 x 10 kW Fischer Panda - New 2008
GENERATOR HOURS	◦ 1230 hours - January 2020
ELECTRICITY	◦ 24V DC/220V AC
SHORE POWER	◦ Victron Charger/ Mastervolt Inverter
ENGINE BATTERIES	◦ 2 x 55 amps/12 V Optima – from 2015
RADIO BATTERY	◦ 2 x 55 amps/12 V Optima - from 2015
SERVICE BATTERY	◦ 6 x 230 amps/12 V Rolls - from 2015
WATERBOILER	◦ 60 litres – 220 V. 2017
WATERMAKER	◦ 200 litres/ hour
PLUMBING AND TANKS	◦ Electrical fire pump

8. SAILS & RIGGING

SAILS	◦ One complete set of sails – From 2017 and 2018 by Incidences Voilerie. See list below:
SAIL AREA	◦ up to 348 m² upwind
SAIL LIST	◦ :

MAIN SAIL	◦ 173 sqm
STAYSAIL 1 (GENOISE)	◦ 54.6 sqm
STAYSAIL 2 (RACING)	◦ 41.6 sqm
STAYSAIL 3 (WORKING)	◦ 33.1 sqm
JIB 1	◦ 47.5 sqm
JIB 2	◦ 42.5 sqm
JIB 3	◦ 31.2 sqm
JIBTOP 1	◦ 36.9 sqm
JIBTOP 2	◦ 30.5 sqm
JACKYARD TOPSAIL 1	◦ 60 sqm
JACKYARD TOPSAIL 2	◦ 38 sqm
A1	◦ 341 sqm
A2 REACHER	◦ 334 sqm
A2	◦ 365 sqm
A3	◦ 295 sqm
SPARS	<ul style="list-style-type: none"> ◦ Spruce & Oregon pine mast and topmast (2005) 25m from deck ◦ Spruce & Oregon pine boom (19 m) and gaff (both 2006) ◦ Spreaders in Ash (2017)
STANDING RIGGING	<ul style="list-style-type: none"> ◦ Unpolished stainless steel – Overhauled 2017, replaced where necessary 2020 ◦ Dynema for upper and lower runners
RUNNING RIGGING	◦ Polyester
FURLERS	◦ None
DECK HARDWARE	<ul style="list-style-type: none"> ◦ 8 x 3 Gears manual Lewmar winches ◦ 4 x electrical Meissner winches ◦ Spencer, Bob Snow and Dryade blocks
WINDLASS	◦ Francis Marine 5000 – in bronze

9. GALLEY & LAUNDRY EQUIPMENT

- 2 x Refrigerators. Pumps by Frigoboat 2019
- 1 x Force 10 gas stove with oven (2017)
- Hood extractor fan
- Single sink

10. NAVIGATION & COMMUNICATION EQUIPMENT

ELECTRONIC INSTRUMENT	◦ Full package using SAILMON central unit with B&G repeaters and Plotter (2018)
SELFSTEERING	◦ B&G (2018) / Lewmar mechanics
COMPUTER	◦ Yes with Macsea Pro software
STANDARD C	◦ Thrane & Thrane
VHF	◦ B&G (2018)
WEATHER INSTRUMENTS	◦ Navtex Furuno
GPS	◦ Furuno and B&G
RADAR	◦ Furuno (stored in container)
EPIRB	◦ Ocean Signal (2018)
STEREO	◦ Yamaha

11. DECK EQUIPMENT

MOORING	◦ Francis Marine 500 – bronze windlass with warping drum.
ANCHOR CHAIN	◦ 100m of 14mm chain w/50Kg CQR anchor For racing, 10m chain w/ rope.

12. SECURITY & SAFETY EQUIPMENT

- Thrane & Thrane Standard Mini C Solas
- 2 x 10 pax life raft Solas Zodiac Pack A - Offshore
- 1 x 6 pax life raft Arimar Coastal
- All safety equipment according to 242 rules for commercial vessel under
- Rif registration (similar to MCA)

13. TENDER

1 x 4.15m RIB Aluminium 3D tender for 8 pax - 25Hp Mercury (2003)

Exclusions

Owner's personal belongings.

Disclaimer

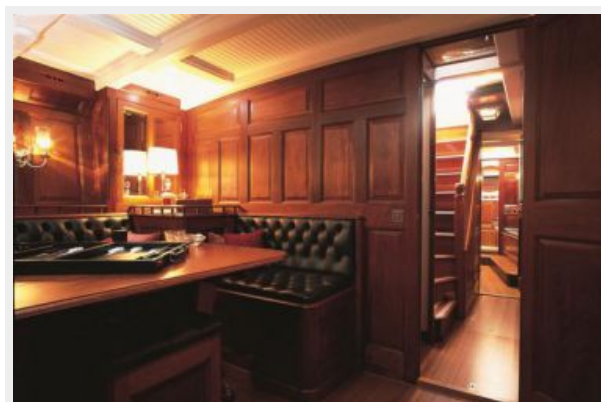
The Company offers the details of this vessel or yacht in good faith but cannot guarantee or warrant the accuracy of this information nor warrant the condition of the vessel. A buyer should instruct his representatives, agents, or his surveyors, to investigate such details as the buyer desires validated. This vessel or yacht is offered subject to prior sale, price change, or withdrawal without notice.

PHOTOS

a4-1



a4-2



a4-6



arriere



8



cuisine



couloir



moonbeam corsica classic 078



st.trope 2012-331



st.trope 2012-352



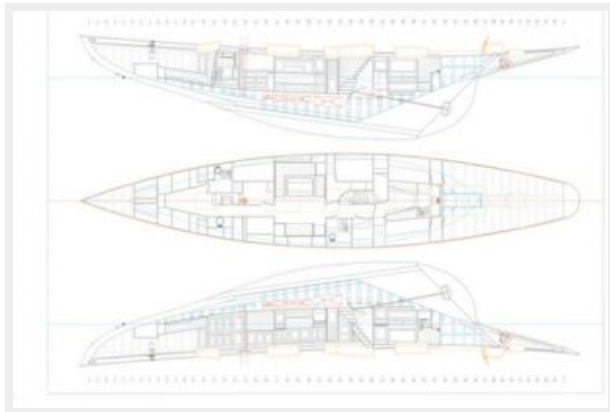
st.trope 2012-453



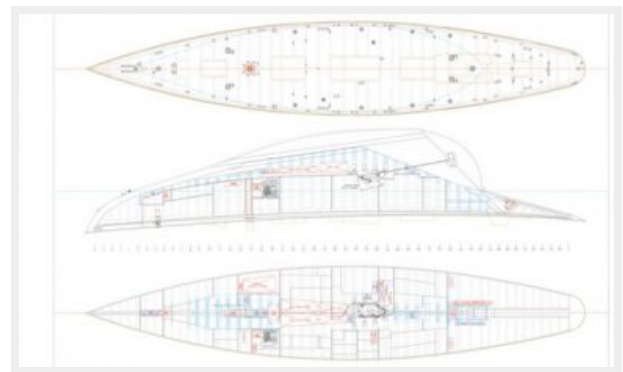
2



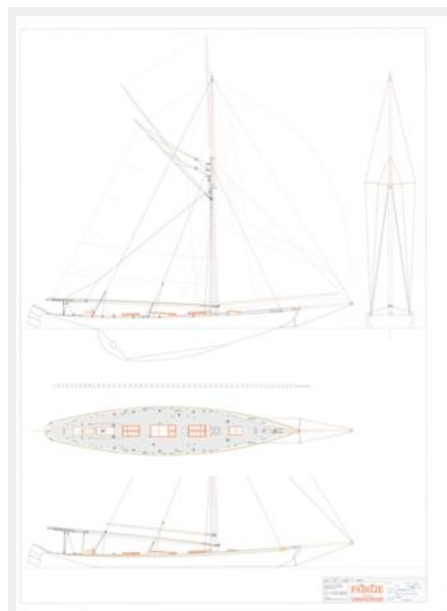
moonbeam of fife ga and plans 1



moonbeam of fife ga and plans 2



moonbeam of fife sail plan



CONTACTS

Andrey Shestakov, leading yacht broker of the sales department of Shestakov Yacht Sales Inc. Shestakov Yacht Sales Inc., the official representative of the Miami/Fort Lauderdale FL headquarters.

Contact details

Email: **andrey@shestakovyachtsales.com**

Web: shestakovyachtsales.com/en/

Telephones

USA: **+1(954)274-4435**

Office hours

Monday – Saturday: **9:00 - 21:00 EDT**

Sunday: **closed**

Address



Harbour Towne Marina, 850 NE 3rd St,
STE 213, Dania, FL 33004