

SEA TIME — REGAL



Builder: REGAL

Year Built: 2011

Model: Cruising Yacht

Price: PRICE ON APPLICATION

Location: United States

LOA: 43' 0" (13.11m)

Beam: 13' 0" (3.96m)

Max Draft: 3' 6" (1.07m)

Our experienced yacht broker, Andrey Shestakov, will help you choose and buy a yacht that best suits your needs **Sea Time — REGAL** from our catalogue. Presently, at Shestakov Yacht Sales Inc., we have a wide variety of yachts available on our sale's list. We also work in close contact with all the big yacht manufacturers from all over the world.

If you would like to buy a yacht **Sea Time — REGAL** or would like help answering any questions concerning purchasing, selling or chartering a yacht, please call **+1(954)274-4435**

TABLE OF CONTENTS

TABLE OF CONTENTS	2
SPECIFICATIONS	4
Overview	4
Basic Information	5
Dimensions	5
Speed, Capacities and Weight	5
Accommodations	5
Hull and Deck Information	5
Engine Information	5
PHOTOS	6
7282282_20191113144047109_1_XLARGE	6
7282282_20191113144016344_1_XLARGE	6
7282282_20191113144021897_1_XLARGE	6
7282282_20191113143944932_1_XLARGE	6
7282282_20191113144405858_1_XLARGE	6
7282282_20191113143925437_1_XLARGE	6
7282282_20191113142933271_1_XLARGE	7
7282282_20191113142953437_1_XLARGE	7
7282282_20191113142840504_1_XLARGE	7
7282282_20191113142845968_1_XLARGE	7
7282282_20191113142851405_1_XLARGE	7
7282282_20191114073423591_1_XLARGE	7
7282282_20191113142921919_1_XLARGE	8
7282282_20191113142747300_1_XLARGE	8
7282282_20191113142938751_1_XLARGE	8
7282282_20191113142742300_1_XLARGE	8
7282282_20191113142809125_1_XLARGE	9
7282282_20191113142803563_1_XLARGE	9

7282282_20191113142721914_1_XLARGE	9
7282282_20191113142726245_1_XLARGE	9
7282282_20191113142901589_1_XLARGE	10
7282282_20191113142906763_1_XLARGE	10
7282282_20191113142912360_1_XLARGE	10
7282282_20191113144053056_1_XLARGE	10
CONTACTS	11
Contact details	11
Telephones	11
Office hours	11
Address	11

SPECIFICATIONS

Overview

Here's Your Chance to Own One of the Most Flexible, Fun and Functional Layouts In Its Class!

This popular sports coupe layout goes from open helm, sun worshiper to comfy, air-conditioned luxury in seconds!

Imagine how you'll feel aboard the truly exceptional sport coupe with luxury features that include:

- **Volvo IPS 500 w/ 400+hrs w/Joystick control (new steering wheel helm hub)**
- **Garmin 5212 GPS** mapping, **Garmin Radar, Autopilot**
- **Spacious, air-conditioned helm** w/ glass sliding doors, refrigerator, ice maker, electric grill and drop-down TV
- **Hardtop electric sunroof** for open air cruising and maximum navigational visibility
- **Oversized, transom swim pad**with multi-position chaise
- **Master stateroom w/private head & shower**
- **Elegant cherry wood salon**W/ KVH SAT TV and Bose Home Theatre
- **Fully equipped galley** w/ microwave/convection oven
- **Aft stateroom w/twins**- convertible to queen berth and private head/shower
- Multi-Positioned, **Power Captains Chair**

Recent vessel maintenance program coordinated by BYS Yachting has completed:

- Pods inspected by certified Volvo tech (Marine Diesel of America)
- Oil analysis performed by N&G Engineering (75%)
- Seals and assembly unit on starboard pod replaced
- Oil and oil filters replaced on both port and starboard engines & pods
- A/C circuit card replaced
- A/C strainers cleaned and all hoses flushed
- New A/C pump and fittings installed
- A/C manifold water leak repaired
- Forward bilge pump replaced
- Engine room bilge pump replaced
- Engine room detailed – bilges cleaned and scrubbed
- Hull waxed and buffed
- Interior detailed

See Walk Through Video and Descriptions section for Boating Magazine Review of this luxurious and capable vessel.

Basic Information

Category: Cruising Yacht

Model Year: 2011

Year Built: 2011

Country: United States

Dimensions

LOA: 43' 0" (13.11m)

Beam: 13' 0" (3.96m)

Max Draft: 3' 6" (1.07m)

Clearance: 12' 4" (3.76m)

Speed, Capacities and Weight

Displacement: 19500 Pounds

Water Capacity: 70 Gallons

Holding Tank: 40 Gallons

Fuel Capacity: 280 Gallons

Accommodations

Total Cabins: 2

Hull and Deck Information

Hull Material: Fiberglass

Engine Information

Engines: 1

Manufacturer: Volvo

Model: IPS 500

Engine Type: Inboard

Fuel Type: Diesel

PHOTOS

7282282_20191113144047109_1_XLARGE



7282282_20191113144016344_1_XLARGE



7282282_20191113144021897_1_XLARGE



7282282_20191113143944932_1_XLARGE



7282282_20191113144405858_1_XLARGE



7282282_20191113143925437_1_XLARGE



7282282_20191113142933271_1_XLARGE



7282282_20191113142953437_1_XLARGE



7282282_20191113142840504_1_XLARGE



7282282_20191113142845968_1_XLARGE



7282282_20191114073423591_1_XLARGE



7282282_20191113142851405_1_XLARGE



7282282_20191113142921919_1_XLARGE



7282282_20191113142747300_1_XLARGE



7282282_20191113142938751_1_XLARGE



7282282_20191113142742300_1_XLARGE



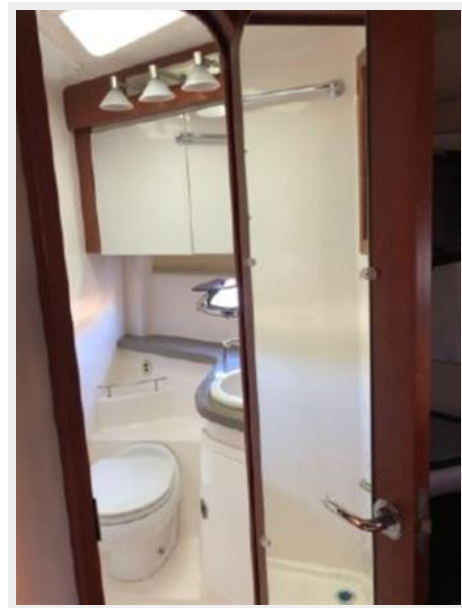
7282282_20191113142809125_1_XLARGE



7282282_20191113142803563_1_XLARGE



7282282_20191113142721914_1_XLARGE



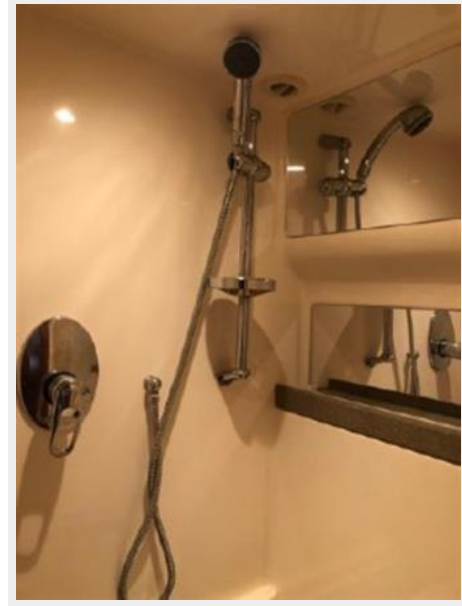
7282282_20191113142726245_1_XLARGE



7282282_20191113142901589_1_XLARGE



7282282_20191113142906763_1_XLARGE



7282282_20191113142912360_1_XLARGE



7282282_20191113144053056_1_XLARGE



CONTACTS

Andrey Shestakov, leading yacht broker of the sales department of Shestakov Yacht Sales Inc. Shestakov Yacht Sales Inc., the official representative of the Miami/Fort Lauderdale FL headquarters.

Contact details

Email: andrey@shestakovyachtsales.com

Web: shestakovyachtsales.com/en/

Telephones

USA: +1(954)274-4435

Office hours

Monday – Saturday: **9:00 - 21:00** EDT

Sunday: **closed**

Address



Harbour Towne Marina, 850 NE 3rd St,
STE 213, Dania, FL 33004