

## CAROLINN — JEFFERSON



**Судостроитель:** JEFFERSON

**Год постройки:** 1999

**Модель:** Моторная яхта

**Цена:** ЦЕНА ЯХТЫ ПО ЗАПРОСУ

**Местонахождение:** United States

**Длина общая:** 53' 0" (16.15m)

**Ширина:** 15' 4" (4.67m)

**Макс. осадка:** 3' 6" (1.07m)

Купить **Carolinn — JEFFERSON** а также выбрать подходящую вам яхту из нашего каталога яхт вам поможет опытный яхтенный брокер Андрей Шестаков. На сегодняшний день компания **Shestakov Yacht Sales Inc.** имеет большое количество яхт в собственном списке продаж, а также тесно сотрудничает со всеми крупными яхтенными производителями по всему миру.

Для того чтобы купить яхту **Carolinn — JEFFERSON** а также проконсультироваться по любому вопросу связанному с покупкой, продажей, чартером яхт позвоните по телефону **+7(918)465-66-44**.

# ОГЛАВЛЕНИЕ

ОГЛАВЛЕНИЕ	2
ХАРАКТЕРИСТИКИ	8
Обзор	8
Основная информация	8
Размеры	9
Скорость, вместимость и масса	9
Размещение	9
Корпус и палуба	9
Информация о двигателе	9
ПОДРОБНОЕ ОПИСАНИЕ	10
MAIN DESCRIPTION	10
1999 JEFFERSON 5300 INTERNATIONAL WALK THROUGH	10
1999 JEFFERSON 5300 SWIM PLATFORM AND COCKPIT	11
1999 JEFFERSON 5300 ACCOMMODATIONS	12
1999 JEFFERSON 5300 FLYBRIDGE AND FOREDECK	14
1999 JEFFERSON 5300 ENGINE AND MECHANICAL	14
1999 JEFFERSON 5300 ELECTRICAL	15
1999 JEFFERSON 5300 ELECTRONICS	15
1999 JEFFERSON 5300 EXCLUSIONS	16
1999 JEFFERSON 5300 DISCLAIMER	16
Исключения	16
Отказ от ответственности	16
ФОТОГРАФИИ	17
1 Carolinn 1999 53' Jefferson Tom Russel	17
100 HR (Copy)	17
102 Starboard	17
101 CaroLinn on the Loop	17
103 Port	17

104 Swimplatform	17
105 Tender	18
106 Cockpit Encl	18
107 Port Stern	18
108 Starboard Stern	18
109 Flybridge Encl	18
110 Starboard Sidewalk	18
111 Bow to Aft	19
112 Fender Rack	19
113 Manuf Name Plate	19
114 Antenna	19
117 Bow Seats	19
116 Foredeck Covers	19
118 On the Hard	20
201 Entrance to Salon	20
202 Cockpit to Port	20
203 Cockpit to Starboard	20
205 Eng Rm Access	21
204 Cockpit Stairs to Flybridge	21
210 Flybridge to Forward	21
211 Flybridge Helm	21
213 Flybridge to Foredeck	21
214 Flybridge to Starboard Seating	21
215 Flybridge Wet Bar	22
216 Flybridge to Aft	22
217 Flybridge Aft Port Seating	22
218 Flybridge to Port	22
220 Flybridge Wet Bar Open	22
219 Flybridge to Port Forward	22

---

221 Salon to Aft	23
222 Salon to Starboard	23
223 Salon Cabinet Starboard	23
224 Salon Liquor Cabinet	23
225 Salon Cabinet Port	24
226 Salon Washer Dryer	24
227 Salon Electrical Panel	24
229 Salon Fwd	24
230 Dinette Table to Port	24
231 Interior Helm to Port	24
232 Dinette Table to Port	25
234 Helm to Aft	25
235 Galley to Starboard	25
236 Galley to Forward	25
237 Galley Freezer	25
238 Galley to Starboard	25
239 Galley Refrigerator	26
241 Helm Stairs Forward	26
242 Landing Joinery	26
243 Landing Stairs Aft	26
244 Master Entrance	27
251 Master Berth	27
252 Master to Starboard	27
253 Master to Port	27
254 Master Storage	27
255 Master Locker to Starboard	27
256 Master Joinery	28
257 Master Drawer Storage	28
260 Master Head	28

---

---

261 Master Head Sole	28
262 Master Head Shower	29
270 VIP Stateroom	29
271 VIP Stateroom to Starboard	29
272 VIP Stateroom Joinery	29
273 VIP Stateroom Pantry	29
280 Bunk Guestroom	29
281 Bunk Guestroom Twin Bed and Pantry	30
283 Bunk Guestroom to Port	30
285 Guest Stateroom Locker Storage	30
284 Bunk Guestroom Joinery	30
291 Guest Head	31
296 Guest Head Shower	31
301 Helm Station	31
302 Helm	31
303 Instruments	31
304 Throttles	31
305 Throttle Thruster Trim	32
306 System Status	32
307 Raymarine Repeater	32
308 Garmin 7612	32
309 Simrad VHF	32
310 Flybridge Refrigerator	32
310b Garmin	33
311 Port Engine Panel	33
312 Stbd Engine Panel	33
313 Robertson AP22	33
314 DSC04587	33
315 iCom VHF	33

---

---

316 VHF Mic	34
317 Tridata	34
318 Garmin 7608xsv	34
319 Throttles	34
320 Eng Rm & Laz Access	34
321 Lazarette	34
323 Rheem Hot Wtr Htr	35
324 Generator	35
325 Water Filter	35
326 Engines	35
327 ER Deck	35
328 Stbd Engine	35
329 Port Engine	36
330 Port Engine Filters	36
335 Fuel Tank Label	36
334 Stbd Racor & Guage	36
341 Centaur 24v 30A Batt Charger	36
341 Charles 12v 60A Battery Charger	36
347 Tagged Ovbd	37
346 DSC04680	37
348 Yacht	37
361 Tank Top	37
362 Tank & Bilge Area	37
363 Toilet Outlet	37
364 Fwd Bilge	38
Fuel Manifold	38
Port Racot & Guage	38
<b>КОНТАКТЫ</b>	<b>39</b>
Контактная информация	39

---

---

Телефоны	39
Время работы	39
Адрес	39

---

# ХАРАКТЕРИСТИКИ

---

## Обзор

---

### OWNER IS LOOKING AT NEW BOAT

### MAKE AN OFFER ON THIS STUNNING BEAUTY!!

The Jefferson 5300 International is a well-built sleek cockpit cruiser with beautiful finishes, built in Taiwan from 1998-2001. The Jefferson 5300 International was not a production yacht, so there were only a few built; *CaroLinn* is an outstanding example of this luxury level yacht, as she was originally built to be a yacht show model. One look at *CaroLinn* and you will be impressed with her functional layout, her updated designer décor with light tiger maple and burl wood cabinetry, her upgrades, and how well she has been maintained.

*CaroLinn* was kept in a covered, fresh water slip until her third owners departed from Chattanooga, TN to cruise the Great Loop in October, 2019. *CaroLinn* travelled as far as Vero Beach, FL arriving in March, 2020. She is now docked in Fort Pierce, FL.

Some of the work the current owners have completed since April, 2014 include: a full soft enclosure for the cockpit which makes *CaroLinn* much more versatile; replaced the full enclosure for the flybridge; added the H30+ Hurley Marine davit system; the installation of a duplex bow thruster and two compact stern thrusters in December, 2019 (\$30,000); the sanding and painting of the bottom also in December, 2019 (\$14,000); 500 hour maintenance performed in October, 2018 at approximately 1,040 hours; and upgrade of the floor coverings and interior soft goods. The current owners are a construction professional and an interior designer and their attention to detail and design are evident throughout the entire yacht.

Her owners have made the difficult decision to sell her so that she can continue her Great Loop adventure, do coastal cruising, or be a luxury waterfront condominium for her next owners.

---

## Основная информация

---

**Тип судна:** Моторная яхта

**Модельный год:** 1999

**Год постройки:** 1999

**Страна:** United States



## Размеры

---

**Длина общая:** 53' 0" (16.15m)

**Ширина:** 15' 4" (4.67m)

**Макс. осадка:** 3' 6" (1.07m)

**Трапы:** 18' 0" (5.49m)

## Скорость, вместимость и масса

---

**Вместимость воды:** 200 Gallons

**Объем топливного бака:** 540 Gallons

## Размещение

---

**Всего кают:** 3

**Всего коек:** 5

**Всего ком. состава:** 2

## Корпус и палуба

---

**Материал корпуса:** Fiberglass

## Информация о двигателе

---

**Двигатели:** 2

**Производитель:** MERCEDES

**Модель:** MTU

**Тип двигателя:** Inboard

**Тип топлива:** Diesel

---

# ПОДРОБНОЕ ОПИСАНИЕ

---

## MAIN DESCRIPTION

---

### OWNER IS LOOKING AT NEW BOAT

### MAKE AN OFFER ON THIS STUNNING BEAUTY!!

The Jefferson 5300 International is a well-built sleek cockpit cruiser with beautiful finishes, built in Taiwan from 1998-2001. The Jefferson 5300 International was not a production yacht, so there were only a few built; *CaroLinn* is an outstanding example of this luxury level yacht, as she was originally built to be a yacht show model. One look at *CaroLinn* and you will be impressed with her functional layout, her updated designer décor with light tiger maple and burl wood cabinetry, her upgrades, and how well she has been maintained.

*CaroLinn* was kept in a covered, fresh water slip until her third owners departed from Chattanooga, TN to cruise the Great Loop in October, 2019. *CaroLinn* travelled as far as Vero Beach, FL arriving in March, 2020. She is now docked in Fort Pierce, FL.

Some of the work the current owners have completed since April, 2014 include: a full soft enclosure for the cockpit which makes *CaroLinn* much more versatile; replaced the full enclosure for the flybridge; added the H30+ Hurley Marine davit system; the installation of a duplex bow thruster and two compact stern thrusters in December, 2019 (\$30,000); the sanding and painting of the bottom also in December, 2019 (\$14,000); 500 hour maintenance performed in October, 2018 at approximately 1,040 hours; and upgrade of the floor coverings and interior soft goods. The current owners are a construction professional and an interior designer and their attention to detail and design are evident throughout the entire yacht.

Her owners have made the difficult decision to sell her so that she can continue her Great Loop adventure, do coastal cruising, or be a luxury waterfront condominium for her next owners.

---

## 1999 JEFFERSON 5300 INTERNATIONAL WALK THROUGH

---

*CaroLinn* has a large swim platform which houses her West Marine tender. A transom door leads directly into the fully enclosed cockpit, which is large enough for entertaining. The windows and screens of the enclosure allow good fresh air flow. The flybridge is accessed via a ladder from the cockpit on the starboard side. There is easy to clean all weather floor coverings on the swim platform, in the cockpit and flybridge, and on the rungs of the ladder.

The engine room is accessed through hatches in the cockpit floor. A large lazarette leads to the

engine compartment, moving forward.

A large polished stainless steel framed, sliding smoked-glass door, with black-out drapes, leads into the well apportioned salon. The salon features settees both to starboard and to port. Large, opening side windows with lined curtains can let in natural light and ventilation.

The interior helm and galley are forward, up two steps. The open galley is to starboard. A dinette, with a beautiful burl wood table is to port, across from the galley. The forward dinette seat back can be flipped forward or aft to create the helm seat or dinette seat.

The fully appointed interior helm is forward to port. The large windshield provides great sightlines from the interior helm.

The three staterooms and two heads of *CaroLinn* are down five steps, and are all on the same level.

The guest bunk stateroom to port features two single berths. The VIP guest stateroom to starboard has an athwartship Queen berth against the bulkhead. The guest staterooms share a head to starboard with a separate stall shower, sink, and head, accessed from the landing.

The master stateroom on *CaroLinn* is forward, with an ensuite head with a separate stall shower, sink, and head. The berth in the master stateroom is a Queen berth. All of the staterooms feature designer décor soft goods. The entire interior is kept comfortable by reverse cycle heat/air conditioning units.

The fully enclosed flybridge on *CaroLinn* is accessed by the ladder in the cockpit. The flybridge has great sightlines, and also features numerous seating and lounging areas for entertaining guests.

The bow is accessed from the wide sidewalks, and features a covered sun pad with lift-up chair backs. The anchor has 250' of marked chain.

---

## 1999 JEFFERSON 5300 SWIM PLATFORM AND COCKPIT

---

**Swim Platform** - The swim platform on *CaroLinn* is large enough to hold the easily launched dinghy, get on and off the boat, and handle stern lines. The entire swim platform is covered by bound, snap-down Infinite All Weather floor covering, in the Seagrass pattern; this is a cushioned, non-slip, non-water absorbing product. The American made H30+ Hurley Marine dinghy davit system is easy to operate. The swim platform also features: a swim boarding ladder, a hot/cold fresh water transom shower, a single 50 amp electrical connection, an automatic shore power cord retrieval system, a fresh water and raw water wash down, a Magma grill with mountable base, rod holders, and a shore water hose connection.

**Cockpit** - The cockpit on *CaroLinn*, accessed via a transom door, is fully enclosed by a custom designed tan and black canvas enclosure with both eisenglass windows and screens. This

enclosure expands the living space on *CaroLinn*, so that the cockpit can be used in any weather conditions. The owners open the side curtains while underway, which allow access to the foredeck via the sidewalks. Two teak and canvas chairs with ottomans at a teak butterfly table provide outdoor dining space; two additional teak and canvas chairs are stored for guests. The same deck cover on the swim platform is also in the cockpit. The cockpit also features: a wide gunwale, two storage lockers, Fusion stereo speakers, outdoor lights in the partial hardtop, drink holders, the fresh water tank access, a ship's bell, and a ladder to the flybridge to starboard.

The lazarette and engine room are accessed via a hatch in the cockpit floor. The lazarette provides an abundance of storage. The engine room is very clean, and has oriental-style area rugs and runners.

---

## 1999 JEFFERSON 5300 ACCOMMODATIONS

---

**Salon** - The interior space on *CaroLinn* is accessed from the cockpit via a stainless steel framed, smoked glass sliding door with full length lined drapes. The salon is beautifully decorated to enhance the light tiger maple and burl wood joinery. The salon sole is richly carpeted with a trending sculptured design popular in many new yachts; the headliner is vinyl. The large opening stainless steel windows, with lined curtains, can let in the natural light.

*CaroLinn* has a brocade curved settee to port, with integrated storage. A large storage ottoman with a hinged top serves as a coffee table. Forward of the settee is the electric panel, behind a smoked glass door, beneath a burl wood countertop. There is a mirrored ½ wall at the bulkhead, over the Splendide 2000 washer/dryer, which is hidden behind vented doors.

A matching curved settee with integrated storage is to starboard. Forward of that settee is a liquor cabinet with shelves and wine racks, beneath a burl wood countertop. A swivel mounted Samsung flat-screen TV is on the bulkhead.

The salon also features: stereo speakers, ceiling lights, accent lighting, an intercom telephone, a dedicated fire extinguisher cubicle, and a reverse cycle heat/AC control panel.

**Galley** - A rounded, carpeted step leads up to the galley, to starboard, on *CaroLinn*. The galley features: a neutral Corian countertop, two deep stainless steel sinks, an opening window with lined curtains over the sinks, a cabinet under the sinks with storage back under the countertop, an under-counter Sub Zero freezer with ice maker to the left of the sinks, two large storage doors on the countertop, four lower storage drawers, a Sub Zero refrigerator to the right of the sinks under the Kenyon three burner electric cooktop with two sides of pot rails, a holding tank monitor, a water tank monitor, a GE microwave/convection oven above the cooktop, a light wood sole with area rugs, and a dedicated fire extinguisher cubicle.

**Dinette** - Dining can be directly across from the galley on *CaroLinn*. A beautiful burl wood table is flanked by two leatherette benches, one carpeted step up from the galley. An opening window with lined curtains is over the table. The forward bench seat has a bolstered back that can be flipped to convert the seat into the helm seat. An electric panel with a smoked glass door is

under the helm seat.

**Interior Helm** - The entire upper interior has a large windshield, with a privacy cover and two windshield wipers. There are two additional stereo speakers, as well as an intercom telephone. The interior helm is fully functional and outfitted. The connection for the central vacuum system is below the helm station.

**Staterooms and Heads** - There are five rounded, carpeted steps with courtesy lights down to the stateroom level. *CaroLinn* has three staterooms and two heads, all on the same level. The sole in the landing and all of the staterooms is light wood. All of the doors are beautiful curved burl wood, with gold colored latch handles. Additional labeled light switches to the staterooms and heads are conveniently located at the stairs.

**VIP Stateroom** - VIP guests on *CaroLinn* can use the stateroom to starboard. A Queen berth, athwartship at the bulkhead has a nightstand with two shelves, and two reading lights. A portlight over the bed has both a cover and lined curtains that match the custom decorator fitted bedding. A two door upper cabinet with four shelves functions as a pantry. A full length lighted locker has both hanging space and four cubicles and a top shelf for storage. The VIP stateroom also features: a full length mirror, a light wood sole with an area rug, a dedicated fire extinguisher cubicle, accent lighting, an intercom telephone, and a reverse cycle heat/AC control panel.

**Guest Bunk Room** - The guest bunk room on *CaroLinn* is to port, across from the VIP stateroom. It has two twin berths, with new mattresses that have never been slept on, separated by a two drawer nightstand. A two door upper cabinet with three shelves functions as an additional pantry or storage. A  $\frac{3}{4}$  length lighted locker has both hanging space and four cubicles and a top shelf for storage. An additional storage drawer is beneath that locker. A portlight next to the outer bed has both a cover and lined curtains that match the custom nautical decorator fitted bedding. The guest bunk room also features: a full length mirror, a light wood sole with an area rug, a dedicated fire extinguisher cubicle, accent lighting, two reading lights, a mount for a flat screen TV, an intercom telephone, and a reverse cycle heat/AC control panel.

**Guest Head** - The guest head on *CaroLinn* is located to starboard forward of the VIP stateroom, and is accessible through the burl wood door on the landing. The celadon green and creamy white fiberglass surfaces are easy to keep clean. There is a separate shower stall with a bi-fold frosted plexiglass door, a mounted/hand-held shower head, a soap/shampoo wall dispenser, and a bubbled plexiglass wall insert for additional light. A neutral Corian vanity has storage beneath. A large mirrored cabinet over the sink can hold extra toiletries as well as towels. There is a VacuFlush head. A portlight with a decorator fabric cover can let in natural light.

**Master Stateroom** - The master stateroom on *CaroLinn* is all the way forward, and is beautifully decorated befitting the rest of this yacht. The centerline Queen bed has custom brocade decorator fitted bedding, and two carpeted steps on either side. A mirrored wall over a fabric paneled headboard is behind the bed; a screened hatch is over the bed. There are large shelves on either side of the bed, with a portlight with both custom matching fabric covers and lined curtains. Two drawers under the bed and four cabinets on either side of the bed provide storage.

There is a ½ length lighted hanging locker to starboard, under a cabinet holding a Samsung TV and LG DVD player with two hiding cabinet doors. A ¾ length lighted hanging locker is to port. The master stateroom also features: two reading lights, access lighting, a dedicated fire extinguisher cubicle, an intercom telephone, a reverse cycle heat/AC control panel, a light wood sole with an area rug, and an ensuite head.

**Master Head** - The master stateroom on *CaroLinn* has an ensuite head that is identical to the guest head, but is only accessible through a burl wood door in the master stateroom.

---

## 1999 JEFFERSON 5300 FLYBRIDGE AND FOREDECK

---

**Flybridge** - The flybridge on *CaroLinn* is reached via the ladder from the cockpit, to starboard. A smoked plexiglass hatch is at the top of the ladder. The entire flybridge deck has the same flooring as the swim platform, cockpit, and ladder steps. The flybridge features a custom tan canvas with black trim and eisenglass full enclosure, and a smoked plexiglass windscreen. The radar arch can be lowered for additional bridge clearance.

A wet bar with a dark wood countertop is to starboard. It features: a hinged sink top, storage under the sink, and a refrigerator/freezer with ice maker. A white vinyl seat is forward between the wet bar and the helm. The helm station is trimmed in wood, and has four wood and two acrylic drink holders. The high-back white vinyl captain's chair has a movable foot rest. There are two cabinets under the helm. An L-shaped white vinyl settee is to port, with storage beneath the cushions. There is an aft facing white vinyl settee back-to-back with the L-shaped settee, also with storage beneath. It faces a forward facing lounge pad settee with bolster backs.

The flybridge also features: four stereo speakers, and an intercom telephone.

**Foredeck** - The foredeck on *CaroLinn* is accessed via the integrated steps from the cockpit to the sidewalks which have both deck rails and shoulder-height safety rails. There are fender racks on both the port and starboard bow rails, which hold three fenders each. The anchor has 250' of marked chain in the anchor locker. The windlass can be controlled by the foot pedals on the bow, or the controls on either helm station. There is a wash down with both fresh and raw water. A Lifesling overboard rescue system is mounted on the rail to port.

A covered sun pad is integral to the bow, with adjustable backs for comfortable lounging.

---

## 1999 JEFFERSON 5300 ENGINE AND MECHANICAL

---

Mercedes 600HP MTU

Dual Racors with vacuum guages

Marine air conditioning with reverse heat

Oil exchanger system

Hydraulic trim tabs

Dual-station hydraulic steering

Rudder position indicators

Water-separating fuel filters

Automatic fire extinguishers in engine room and cockpit

Awlgrip exterior paint with contrasting boot stripe

Anti-fouling bottom paint with epoxy barrier coating

---

## **1999 JEFFERSON 5300 ELECTRICAL**

---

Westerbeke generator (15 kW with sound shield)

Dual 240 volt 50 amp weatherproof shorepower inlets

Bow & Stern Thruster

TV and telephone shore inlet

Shorepower cords

Dual electric air horns

Automatic marine battery charger

20 gallon Rheem electric water heater

Electric marine toilets, holding tank with y-valves and macerator pumpout

Charles 12v 60A Battery Chager

Centaur 24v 30A Battery Charger

---

## **1999 JEFFERSON 5300 ELECTRONICS**

---

Garmin 7612 Chartplotter

Garmin 7608 Chartplotter

Compass

Speedlog and depthfinder

VHF radios

Holding tank level indicators

CO detectors

---

## **1999 JEFFERSON 5300 EXCLUSIONS**

---

Sellers' personal belongings are excluded.

---

## **1999 JEFFERSON 5300 DISCLAIMER**

---

The Company offers the details of this vessel in good faith but cannot guarantee or warrant the accuracy of this information nor warrant the condition of the vessel. A buyer should instruct his agents, or his surveyors, to investigate such details as the buyer desires validated. This vessel is offered subject to prior sale, price change, or withdrawal without notice.

---

## **Исключения**

---

При продаже яхты исключаются личные вещи владельца.

---

## **Отказ от ответственности**

---

Компания предоставляет описание судна или яхты добросовестно, но не может гарантировать точность этой информации, а также не ручается за техническое состояние. Покупатель должен проинструктировать своих агентов или оценщиков исследовать представленную информацию более подробно, по собственному желанию. Продажа судна или яхты, изменение цены или снятие с продажи будет происходить без предварительного уведомления.



# ФОТОГРАФИИ

1 Carolinn 1999 53' Jefferson Tom Russel



100 HR (Copy)



101 CaroLinn on the Loop



102 Starboard



103 Port



104 Swimplatform



**105 Tender**



**106 Cockpit Encl**



**107 Port Stern**



**108 Starboard Stern**



**109 Flybridge Encl**



**110 Starboard Sidewalk**



**111 Bow to Aft**



**112 Fender Rack**



**113 Manuf Name Plate**



**114 Antenna**



**116 Foredeck Covers**



**117 Bow Seats**



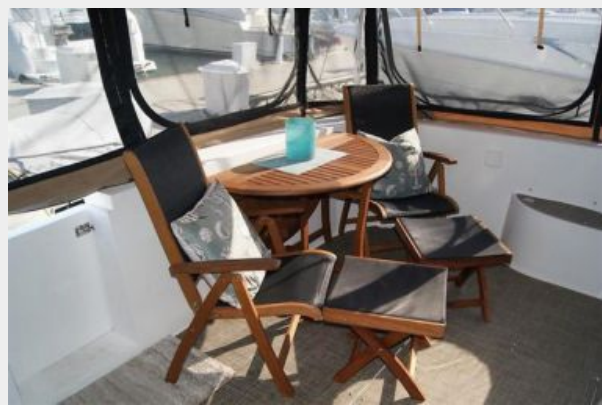
**118 On the Hard**



**201 Entrance to Salon**



**202 Cockpit to Port**



**203 Cockpit to Starboard**



**204 Cockpit Stairs to Flybridge**



**205 Eng Rm Access**



**210 Flybridge to Forward**



**211 Flybridge Helm**



**213 Flybridge to Foredeck**



**214 Flybridge to Starboard Seating**



**215 Flybridge Wet Bar**



**216 Flybridge to Aft**



**217 Flybridge Aft Port Seating**



**218 Flybridge to Port**



**219 Flybridge to Port Forward**



**220 Flybridge Wet Bar Open**



**221 Salon to Aft**



**222 Salon to Starboard**



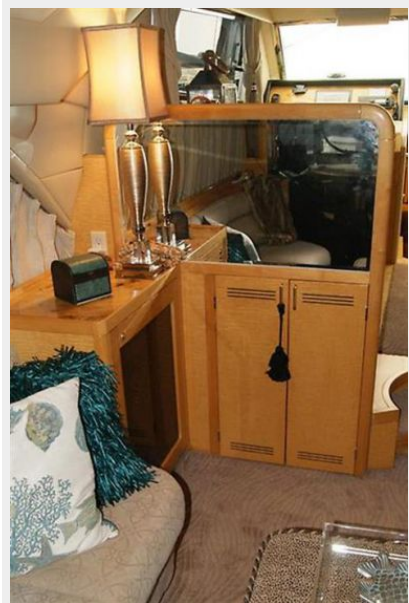
**223 Salon Cabinet Starboard**



**224 Salon Liquor Cabinet**



225 Salon Cabinet Port



226 Salon Washer Dryer



227 Salon Electrical Panel



229 Salon Fwd



230 Dinette Table to Port



231 Interior Helm to Port





**232 Dinette Table to Port**



**234 Helm to Aft**



**235 Galley to Starboard**



**236 Galley to Forward**



**237 Galley Freezer**



**238 Galley to Starboard**



**239 Galley Refrigerator**



**241 Helm Stairs Forward**



**242 Landing Joinery**



**243 Landing Stairs Aft**



**244 Master Entrance**



**251 Master Berth**



**252 Master to Starboard**



**253 Master to Port**



**254 Master Storage**



**255 Master Locker to Starboard**



**256 Master Joinery**



**257 Master Drawer Storage**



**260 Master Head**



**261 Master Head Sole**



**262 Master Head Shower**



**270 VIP Stateroom**



**271 VIP Stateroom to Starboard**



**272 VIP Stateroom Joinery**



**273 VIP Stateroom Pantry**



**280 Bunk Guestroom**



**281 Bunk Guestroom Twin Bed and Pantry**



**283 Bunk Guestroom to Port**



**285 Guest Stateroom Locker Storage**



**284 Bunk Guestroom Joinery**



**291 Guest Head**



**296 Guest Head Shower**



**301 Helm Station**



**302 Helm**



**303 Instruments**



**304 Throttles**



**305 Throttle Thruster Trim**



**306 System Status**



**307 Raymarine Repeater**



**308 Garmin 7612**



**309 Simrad VHF**



**310 Flybridge Refrigerator**





310b Garmin



311 Port Engine Panel



312 Stbd Engine Panel



313 Robertson AP22



314 DSC04587



315 iCom VHF



**316 VHF Mic**



**317 Tridata**



**318 Garmin 7608xsv**



**319 Throttles**



**320 Eng Rm & Laz Access**



**321 Lazarette**



**323 Rheem Hot Wtr Htr**



**324 Generator**



**325 Water Filter**



**326 Engines**



**327 ER Deck**



**328 Stbd Engine**



**329 Port Engine**



**330 Port Engine Filters**



**334 Stbd Racor & Guage**



**335 Fuel Tank Label**



**341 Centaur 24v 30A Batt Charger**



**341 Charles 12v 60A Battery Charger**



346 DSC04680



347 Tagged Ovbd



348 Yacht



361 Tank Top



362 Tank & Bilge Area



363 Toilet Outlet



**364 Fwd Bilge**



**Fuel Manifold**



**Port Racot & Guage**



# КОНТАКТЫ

---

Андрей Шестаков (Andrey Shestakov) – ведущий яхтенный брокер отдела продаж яхт и судов компании Shestakov Yacht Sales Inc. Официальный представитель Shestakov Yacht Sales Inc. для русскоговорящих клиентов в центральном офисе компании в Майами/Форт Лодердейл/Флорида/США.

## Контактная информация

---

Email: [andrey@shestakovyachtsales.com](mailto:andrey@shestakovyachtsales.com)

Web: [shestakovyachtsales.com](http://shestakovyachtsales.com)

## Телефоны

---

Краснодарский край: **+7(918)465-66-44**

США, Майами, Флорида: **+1(954)274-4435**

## Время работы

---

Понедельник – Суббота: **9:00 - 21:00**  
EDT

Воскресенье: **Закрито**

## Адрес

---



Harbour Towne Marina, 850 NE 3rd St,  
STE 213, Dania, FL 33004