

## SUN — ARCADIA YACHTS



**Builder:** ARCADIA YACHTS

**Year Built:** 2012

**Model:** Motor Yacht

**Price:** PRICE ON APPLICATION

**Location:** Turkey

**LOA:** 116' 6" (35.50m)

**Beam:** 24' 1" (7.33m)

**Max Draft:** 11' 10" (3.59m)

**Cruise Speed:** 10 Kts. (12 MPH)

**Max Speed:** 17 Kts. (20 MPH)

Our experienced yacht broker, Andrey Shestakov, will help you choose and buy a yacht that best suits your needs **SUN — ARCADIA YACHTS** from our catalogue. Presently, at Shestakov Yacht Sales Inc., we have a wide variety of yachts available on our sale's list. We also work in close contact with all the big yacht manufacturers from all over the world.

If you would like to buy a yacht **SUN — ARCADIA YACHTS** or would like help answering any questions concerning purchasing, selling or chartering a yacht, please call **+1(954)274-4435**

# TABLE OF CONTENTS

TABLE OF CONTENTS	2
SPECIFICATIONS	4
Overview	4
Basic Information	4
Dimensions	4
Speed, Capacities and Weight	5
Accommodations	5
Hull and Deck Information	5
Engine Information	5
DETAILED INFORMATION	6
MACHINERY	6
DECK EQUIPMENT	7
Exclusions	7
Disclaimer	7
PHOTOS	8
__PSU6881	8
__PSU7398	8
__PSU7067	8
__PSU7181ok	8
__PSU7215	8
__PSU7237	8
__PSU7271	9
__PSU7324	9
__PSU7354	9
__PSU7708	9
__PSU7871ok-2	9
__PSU7938	9
__PSU7964	10

---

_PSU7979ok	10
DJI_0301	10
DJI_0534	10
DJI_0584	10
DJI_0588	10
DJI_0594	11
DJI_0606	11
Img0104	11
DJI_0626	11
Img0164	11
Img0164-1	11
Img0200	12
Img0200-1	12
SAM_5659	12
SAM_5931	12
CONTACTS	13
Contact details	13
Telephones	13
Office hours	13
Address	13

---

# SPECIFICATIONS

---

## Overview

---

The 35m / 116' Arcadia Yachts SUN offers a new way to experience the sea, enabling guests to enjoy the sea whilst respecting nature. With solar panels integrated into the superstructure which power utilities and services on-board, guests and sea life will appreciate complete tranquillity at anchor. Welcoming you onboard is a spacious seating area leading into the open main salon and dining area, with floor length windows, large side openings and state of the art home cinema facilities. The upper deck offers a fabulous lounging and a bar area, as well as a comfortable dining table for 12 guests. Upper deck midships there is a family room offering panoramic views and cinema facilities. The fore deck boasts a large sunbathing area with Jacuzzi as well as seating in front of the bridge. SUN's interior layout sleeps up to 12 guests in 6 staterooms, including a full beam master suite on the main deck with vanity area, owners study, large bathroom with Jacuzzi, his and her wash basins and walk-in dressing area, 2 double cabins and 2 twin cabins plus 1 cabin behind the bridge.

## Key features

- 6th Cabin - 12 guests
- Full range of water toys
- Vast deck spaces
- Fold down balconies
- Eco-friendly yacht with solar panels

---

## Basic Information

---

**Category:** Motor Yacht

**Model Year:** 2012

**Year Built:** 2012

**Country:** Turkey

---

## Dimensions

---

**LOA:** 116' 6" (35.50m)

**Beam:** 24' 1" (7.33m)

**Max Draft:** 11' 10" (3.59m)

---

## Speed, Capacities and Weight

---

**Cruise Speed:** 10 Kts. (12 MPH)

**Max Speed:** 17 Kts. (20 MPH)

**Gross Tonnage:** 266 Pounds

**Water Capacity:** 1056.688208 Gallons

**Fuel Capacity:** 3698.408728 Gallons

---

## Accommodations

---

**Total Cabins:** 6

**Total Berths:** 12

**Sleeps:** 12

**Crew Berths:** 7

**Crew Sleeps:** 7

---

## Hull and Deck Information

---

**Hull Material:** Composite

**Hull Designer:** ARCADIA YACHTS

**Exterior Designer:** ARCADIA YACHTS

**Interior Designer:** ARCADIA YACHTS

---

## Engine Information

---

**Engines:** 2

**Manufacturer:** MAN

**Model:** D2842LE443

**Engine Type:** Inboard

**Fuel Type:** Diesel

---

# DETAILED INFORMATION

---

## MACHINERY

---

### Main Engines

Engine Make/Model: MAN – D2842LE443 x 2  
Engine Hours: 2890  
Gearboxes for Main Engines: Yes  
Drive: Shaft

### Speed Consumption per hours Range RPM

	Speed Consump/hr	Range RPM
Maximum: <b>17</b>		2300
Cruising: <b>10</b>		1400

### Generators & Electricity

Output:  
Generators: Köhler (10EF02D)  
Generator Hours: 5.190  
Generator Fuel Consumption: DIESEL8 LT.  
Shore Power: 380

### Batteries

Main Engine Starting: Electronic  
Generator Starting: Electronic  
Emergency: Manuel

### Air Conditioning:

Type:

## Other Machinery

Water makers:	Idromar MC55
Trim Tabs/Stabilizers:	Rodriquez Zero Speed
Bow Thruster:	Rodriquez
Steering System:	BCS SRL
Fuel Separator & Filtration:	A/B Laval
Sewage System:	Gianneschi Pump Tecnomar System
Fresh Water System:	“ ” “
Bilge Water Filtration:	“ ” “
Lube Oil Capacity	-
Waste Oil Capacity	-

## DECK EQUIPMENT

Anchor Windlass:	Lewmar vq x2
Aft Warping Capstans:	Lewmar
Anchors:	2
Anchor Chain:	2x 90m +120m (14mm)
Boat Crane and Davits:	Besenzoni 500 Kg. Liftpower
Passerelle:	Besenzoni
Swimming Platform:	Hydrolic

## Exclusions

Owner's personal belongings.

## Disclaimer

The Company offers the details of this vessel or yacht in good faith but cannot guarantee or warrant the accuracy of this information nor warrant the condition of the vessel. A buyer should instruct his representatives, agents, or his surveyors, to investigate such details as the buyer desires validated. This vessel or yacht is offered subject to prior sale, price change, or withdrawal without notice.

# PHOTOS

\_\_PSU6881



\_\_PSU7398



\_\_PSU7067



\_\_PSU7181ok



\_\_PSU7215



\_\_PSU7237





**\_PSU7271**



**\_PSU7324**



**\_PSU7354**



**\_PSU7708**



**\_PSU7871ok-2**



**\_PSU7938**



**\_PSU7964**



**\_PSU7979ok**



**DJI\_0301**



**DJI\_0534**



**DJI\_0584**



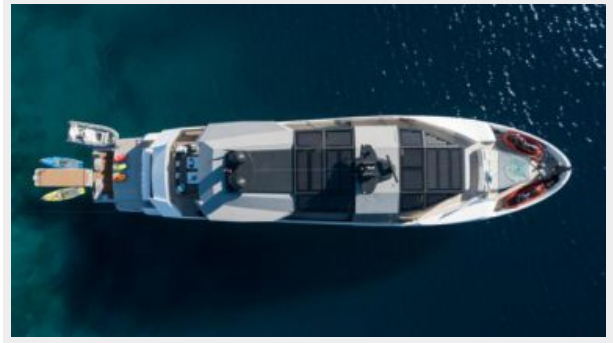
**DJI\_0588**



DJI\_0594



DJI\_0606



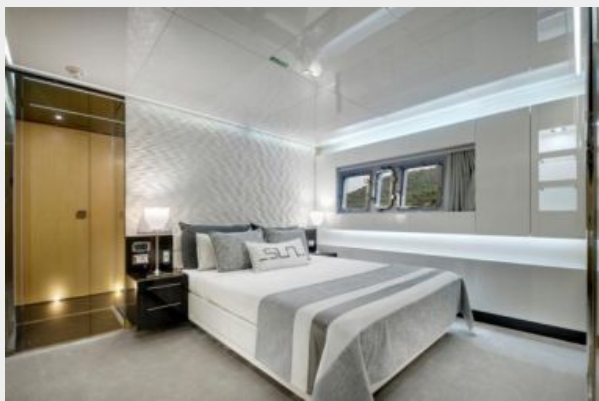
DJI\_0626



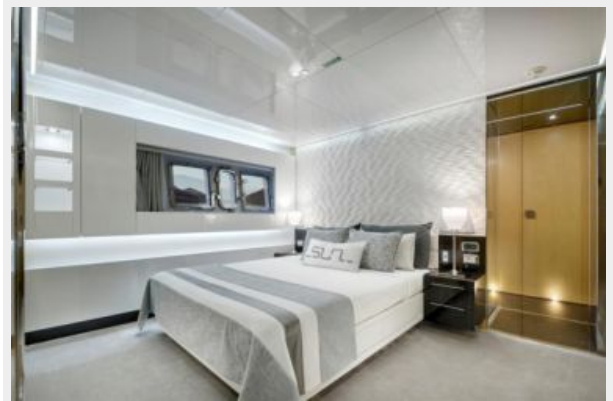
Img0104



Img0164



Img0164-1



Img0200



Img0200-1



SAM\_5659



SAM\_5931



# CONTACTS

---

Andrey Shestakov, leading yacht broker of the sales department of Shestakov Yacht Sales Inc. Shestakov Yacht Sales Inc., the official representative of the Miami/Fort Lauderdale FL headquarters.

## Contact details

---

Email: [andrey@shestakovyachtsales.com](mailto:andrey@shestakovyachtsales.com)

Web: [shestakovyachtsales.com/en/](http://shestakovyachtsales.com/en/)

## Telephones

---

USA: +1(954)274-4435

## Office hours

---

Monday – Saturday: **9:00 - 21:00** EDT

Sunday: **closed**

## Address

---



Harbour Towne Marina, 850 NE 3rd St,  
STE 213, Dania, FL 33004