

54 SEA RAY — SEA RAY



Builder: [SEA RAY](#)

Year Built: 2000

Model: Cruising Yacht

Price: PRICE ON APPLICATION

Location: United States

LOA: 54' 0" (16.46m)

Beam: 15' 11" (4.85m)

Max Draft: 3' 11" (1.19m)

Cruise Speed: 20 Kts. (23 MPH)

Max Speed: 33 Kts. (38 MPH)

Our experienced yacht broker, Andrey Shestakov, will help you choose and buy a yacht that best suits your needs **54 Sea Ray — SEA RAY** from our catalogue. Presently, at Shestakov Yacht Sales Inc., we have a wide variety of yachts available on our sale's list. We also work in close contact with all the big yacht manufacturers from all over the world.

If you would like to buy a yacht **54 Sea Ray — SEA RAY** or would like help answering any questions concerning purchasing, selling or chartering a yacht, please call **+1(954)274-4435**

TABLE OF CONTENTS

TABLE OF CONTENTS	2
SPECIFICATIONS	7
Overview	7
Basic Information	7
Dimensions	7
Speed, Capacities and Weight	7
Accommodations	8
Hull and Deck Information	8
Engine Information	8
DETAILED INFORMATION	9
Salon	9
Galley	9
Master Stateroom	9
Master Head & Shower	10
Forward Guest Stateroom	10
Guest Head/ Shower	11
Electronics and Helm Station	11
Cockpit & Transom	11
Engine / Mechanical	12
Exclusions	12
Disclaimer	12
PHOTOS	14
731A9694	14
731A9696	14
731A9645	14
731A9632-HDR	14
731A9639-Edit	14
731A9639	14

731A9648-Edit	15
731A9648	15
731A9655	15
731A9650	15
731A9659	16
731A9660	16
731A9882	16
731A9883	16
731A9885-Edit	16
731A9885	16
731A9887	17
731A9888	17
731A9889-Edit	17
731A9889	17
731A9891-Edit	17
731A9891	17
731A9894	18
731A9896	18
731A9645	18
731A9632-HDR	18
731A9639-Edit	18
731A9639	18
731A9648-Edit	19
731A9648	19
731A9655	19
731A9650	19
731A9659	20
731A9660	20
731A9882	20

731A9883	20
731A9885-Edit	20
731A9885	20
731A9887	21
731A9888	21
731A9889-Edit	21
731A9889	21
731A9891-Edit	21
731A9891	21
731A9894	22
731A9896	22
731A9744	22
731A9746	22
731A9748	22
731A9750	22
731A9756	23
731A9758	23
731A9701	23
731A9705	23
731A9710	23
731A9711	23
731A9713	24
731A9715	24
731A9727	24
731A9735	24
731A9743	24
731A9744	24
731A9746	25
731A9753	25

731A9758	25
731A9770	25
731A9778	25
731A9771	25
731A9779	26
731A9782	26
731A9787	26
731A9791	26
731A9796-Edit-2	26
731A9796	26
731A9797-Edit	27
731A9797	27
731A9802-Edit	27
731A9802	27
731A9803	27
731A9815	27
731A9820	28
731A9826	28
731A9827	28
731A9828	28
731A9829	28
731A9833-Edit	28
731A9834-Edit	29
731A9836-Edit	29
731A9861	29
731A9857	29
731A9868	30
731A9871	30
DJI_0023	30

731A9878	30
DJI_0027	30
DJI_0024	30
DJI_0028	31
DJI_0029	31
DJI_0030	31
DJI_0031	31
DJI_0033	31
DJI_0036	31
DJI_0037	32
DJI_0046	32
DJI_0047	32
CONTACTS	33
Contact details	33
Telephones	33
Office hours	33
Address	33

SPECIFICATIONS

Overview

2020 \$125K REFIT - RECIEPTS AVAILABLE The raised helm area design of the Sea Ray 540 provides lots of privacy and cabin space as well as an expansive aft cockpit ideal for large groups, complete with a large TV for entertainment and ample seating for over 10 adults and a table for sea-side meals. There is ample space for shade as well as sun. The hydraulic swim platform is large enough to carry a jet ski or a tender. The main salon is elegant with mahogany colored hard wood flooring and a large flowing settee from starboard and Galley to port full with a pullout berth. The roomy 2 stateroom/ 2 head layout. Both master and guest stateroom feature walk around queen berths and full showers. The well-equipped helm has spacious seating for captain and crew, with a glass windshield with opening vent window, hardtop and full enclosures. There is a full wet bar with sink, refrigerator and ice maker. The U-shaped seating area has an electrically actuated retractable sunpad and there's an optional recessed sunpad available for the fore deck too. This 540 is also in a successful Charter Program in Miami and is ready to work or cruise! Can net up to 30k Per month. She is a great Value, Bring Offers!

Basic Information

Category: Cruising Yacht

Model Year: 2000

Year Built: 2000

Country: United States

Dimensions

LOA: 54' 0" (16.46m)

Beam: 15' 11" (4.85m)

Max Draft: 3' 11" (1.19m)

Speed, Capacities and Weight

Cruise Speed: 20 Kts. (23 MPH)

Max Speed: 33 Kts. (38 MPH)

Water Capacity: 150 Gallons

Holding Tank: 68 Gallons

Fuel Capacity: 600 Gallons

Accommodations

Total Cabins: 2

Total Heads: 2

Hull and Deck Information

Hull Material: Fiberglass

Engine Information

Engines: 2

Manufacturer: Caterpillar

Model: 3196TA

Engine Type: Inboard

Fuel Type: Diesel

DETAILED INFORMATION

Salon

- Wood floor
- Glass & bottle storage
- Cruisair SMX II climate controls
- Utensil Storage
- Indirect lighting
- High-gloss cherry cabinets
- Surround sound system
- Overhead Hatch
- Portlights, opening (2)
- Sliding cabin door, lockable
- Ultra leather sofa
- Sony LCD flat screen
- Clarion AM/FM Radio
- Storage, under sofa-forward

Galley

- Corian countertops
- Sink with single lever faucet designed by Grohe and Corian cover
- Outlet, 12V accessory
- Cabinets in high gloss Maple
- Premium refrigerator & freezer
- Wood flooring
- Lighting
- Kenyon Stove, recessed glass 3 burner cooktop w/cover
- Storage Cabinets, upper/lower
- Water Heater
- Storage for glass & dish
- Storage drawers with cutlery inserts
- Portholes

Master Stateroom

- Queen size island bed with storage under mid ship
- Cabinets and wood work in high gloss cherry

- Wood floor
- Cedar lined hanging locker
- Mirrored doors and accents
- SMXII AC Digital control
- Flat screen LCD TV
- Reading Lights
- Portlight with Curtains
- Skylight w/Cover
- Lighting
- Drawers & storage cabinet
- Mirror wall decor
- Door with full length mirror
- (2) portholes

Master Head & Shower

- Bath fixtures in chrome & gold
- Accent rope lighting
- Tiled flooring
- Stainless steel handrails and elliptical
- VacuFlush head with fiberglass settee lid
- Power vent, 24V
- Shower with seat an adjustable shower head & circular acrylic door
- Storage cabinets
- Lighting
- Storage, medicine cabinet - mirrored
- Wall coverings
- Vanity with solid surface molded countertop
- Molded sink with Grohe faucet
- Mirror

Forward Guest Stateroom

- Center lined queen size island bed with storage under
- SMXII AC Digital control
- Cedar lined hanging locker
- Drawers under Berth
- Mirrored headboard
- Reading Lights
- Overhead Hatch
- Mirrored doors and accents
- Vizio flat screen LCD TV,

- Lighting
- Cruisair SMX II climate controls
- Drawers & storage cabinet
- Cabinetry and wood work in hi gloss
- (2) portholes

Guest Head/ Shower

- Bath accessories, chrome & gold
- Door, privacy - access from salon
- Flooring, tile
- Handrails, elliptical SS
- Head w/fiberglass settee lid (VacuFlush)
- Power vent, 24V
- Shower w/seat, adjustable shower wand & circular acrylic door
- Storage, cabinet - upper
- Storage, medicine cabinet - mirrored
- Vanity w/solid surface countertop, solid surface sink w/Grohe
- Faucet, mirrors & storage below

Electronics and Helm Station

- Garmin 7612xsv multifunction display
- Garmin 7607xsv
- Raymarine Smart controller
- AutoAnchor 500RCX
- Jabsco search light
- Bennett trim tabs control
- Raytheon Autopilot
- Raytheon raydata
- Sea Ray systems monitor
- Bow & Stern Thruster
- Danforth compass
- Air conditioning
- Fusion MS-UD750

Cockpit & Transom

- Hard top
- Portside sliding acrylic lockable hatch to salon
- Overhead lights

- Rod Holders
- Courtesy lighting
- Drink holders
- U-line ice maker
- Isotherm refrigerator
- Fresh water sink with garbage chute
- JL Audio speakers
- Cockpit TV
- Aft sunpad & seating area
- Aft helm sofa facing aft cockpit
- Fiberglass Swim Platform - Hydraulic w /Concealed Stainless Steel Ladder

Engine / Mechanical

- CAT 3196TA Caterpillar diesel inboards at 660hp with 1374 hours (gages show 1374 and 869)
- Westerbeke 15 kw generator with 2015 hours
- Twin disc transmission MG 5114A
- Racor filters
- Fire suppression system
- (4) Automatic bilge pumps
- (2)Blowers
- Crossover fuel system
- Removable stainless steel ladder
- Lighting, 24V
- Engine Synchronizer
- Hydraulic power steering
- Hydraulic trim tabs
- Holding tank with macerator and pump out
- Fire extinguishers
- Freshwater cooling
- Gel-coated engine room in white
- Oil changer system - engines, transmissions, & generator

Exclusions

Owner's personal belongings.

Disclaimer

The Company offers the details of this vessel or yacht in good faith but cannot guarantee or warrant the accuracy of this information nor warrant the condition of the vessel. A buyer should

instruct his representatives, agents, or his surveyors, to investigate such details as the buyer desires validated. This vessel or yacht is offered subject to prior sale, price change, or withdrawal without notice.

PHOTOS

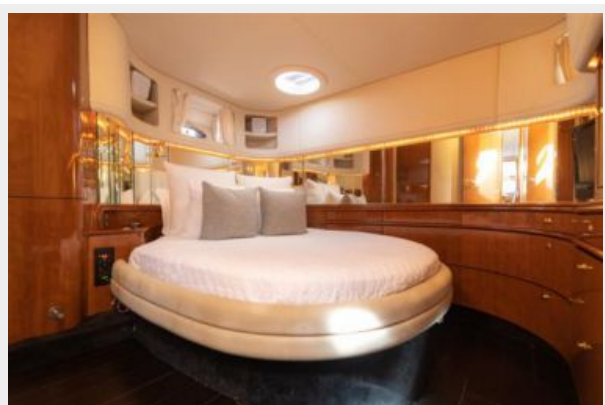
731A9694



731A9696



731A9645



731A9632-HDR



731A9639-Edit



731A9639



731A9648-Edit



731A9648



731A9655

731A9650



731A9659



731A9660



731A9882



731A9883



731A9885-Edit



731A9885



731A9887



731A9888



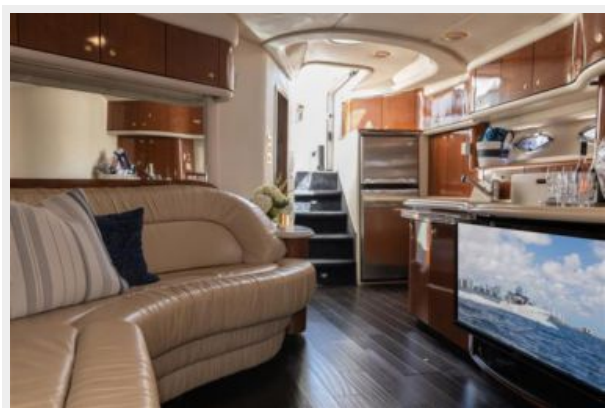
731A9889-Edit



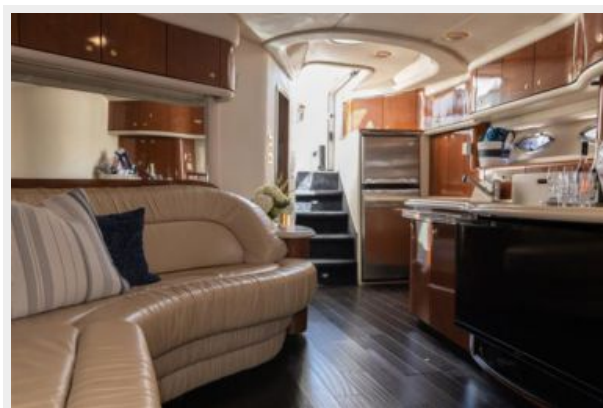
731A9889



731A9891-Edit



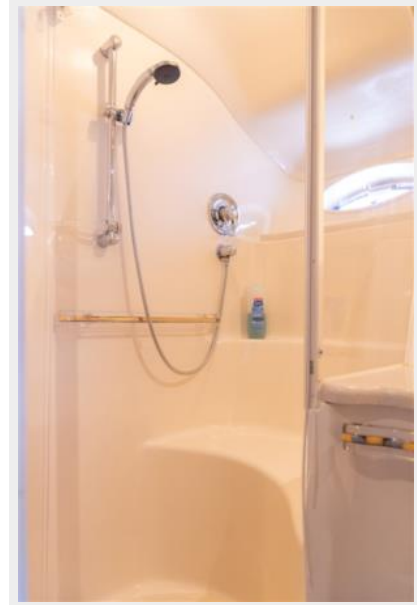
731A9891



731A9894



731A9896



731A9645



731A9632-HDR



731A9639-Edit



731A9639



731A9648-Edit



731A9648



731A9655



731A9650



731A9659



731A9660



731A9882



731A9883



731A9885-Edit



731A9885



731A9887



731A9888



731A9889-Edit



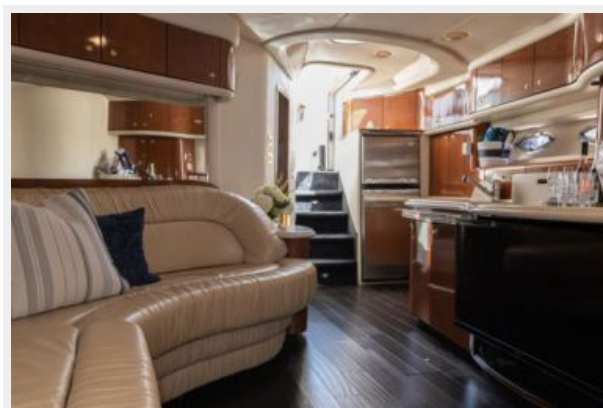
731A9889



731A9891-Edit



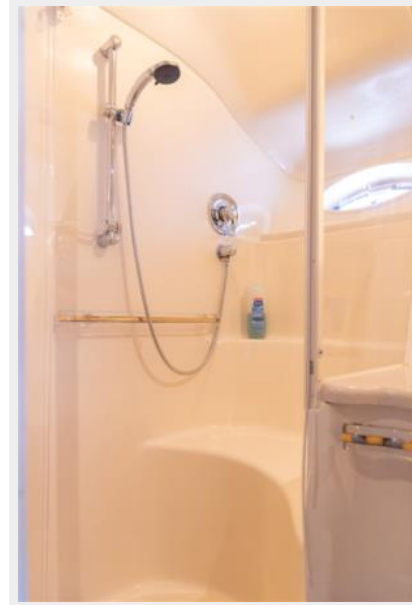
731A9891



731A9894



731A9896



731A9744



731A9746



731A9748



731A9750



731A9756



731A9758



731A9701



731A9705



731A9710



731A9711



731A9713



731A9715



731A9727



731A9735



731A9743



731A9744



731A9746



731A9753



731A9758



731A9770



731A9778



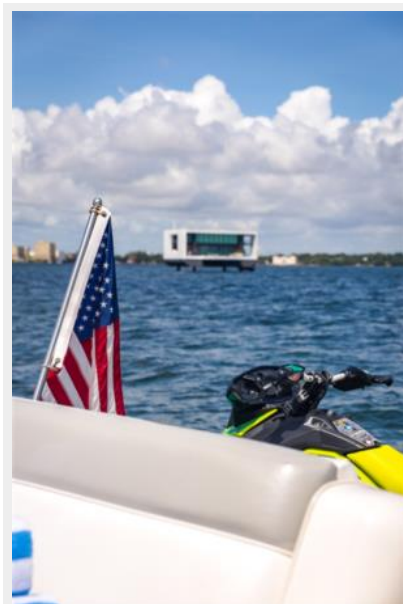
731A9771



731A9779



731A9782



731A9787



731A9791



731A9796-Edit-2



731A9796



731A9797-Edit



731A9797



731A9802-Edit



731A9802



731A9803



731A9815



731A9820



731A9826



731A9827



731A9828



731A9829



731A9833-Edit



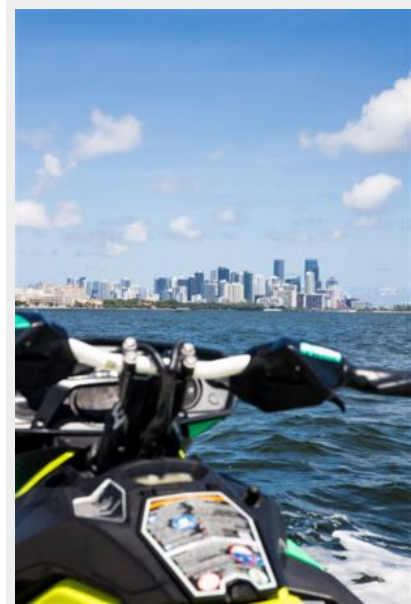
731A9834-Edit



731A9836-Edit



731A9861



731A9857



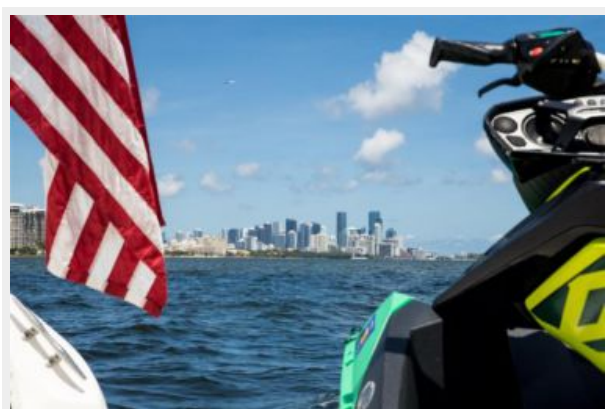
731A9868



731A9871



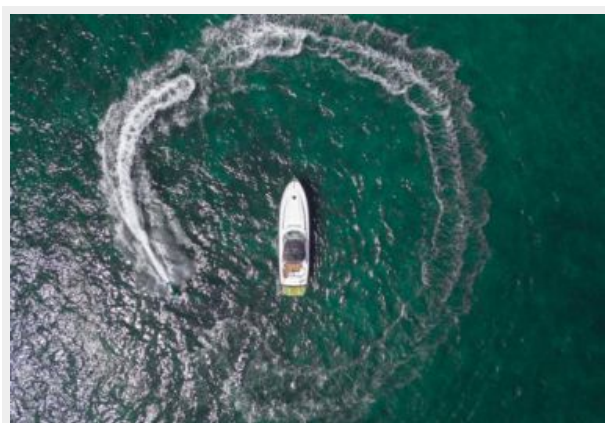
731A9878



DJI_0023



DJI_0024



DJI_0027



DJI_0028



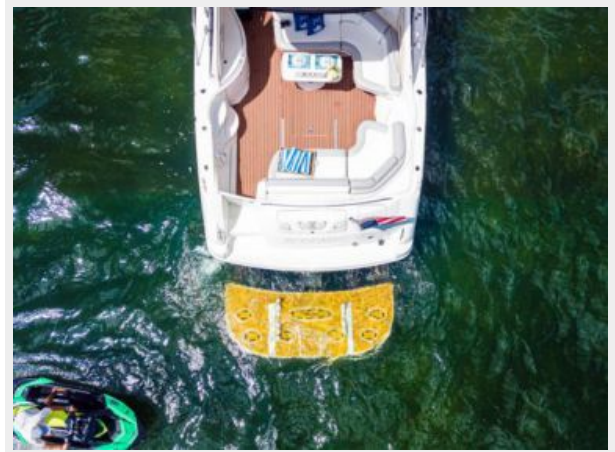
DJI_0029



DJI_0030



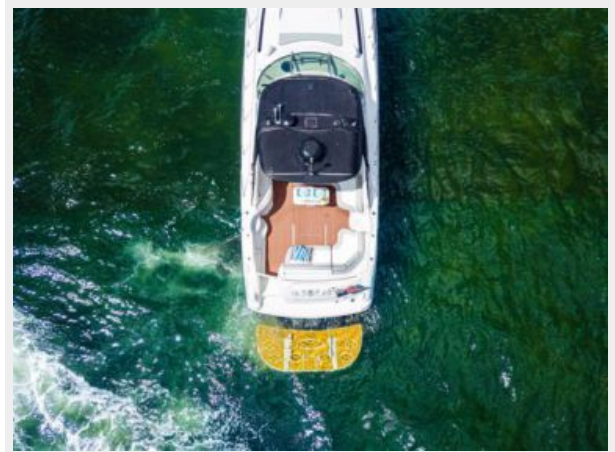
DJI_0031



DJI_0033



DJI_0036



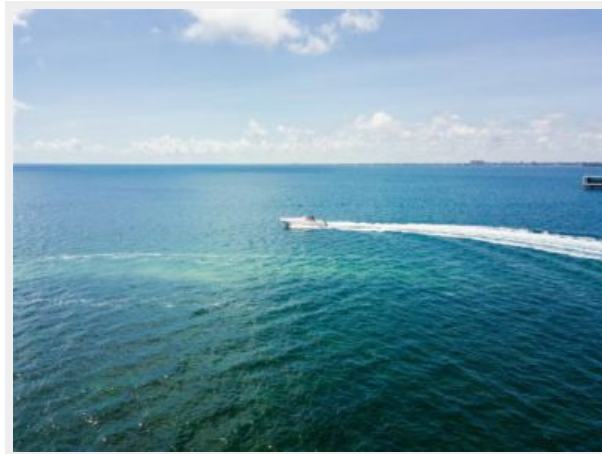
DJI_0037



DJI_0046



DJI_0047



CONTACTS

Andrey Shestakov, leading yacht broker of the sales department of Shestakov Yacht Sales Inc. Shestakov Yacht Sales Inc., the official representative of the Miami/Fort Lauderdale FL headquarters.

Contact details

Email: andrey@shestakovyachtsales.com

Web: shestakovyachtsales.com/en/

Telephones

USA: +1(954)274-4435

Office hours

Monday – Saturday: **9:00 - 21:00** EDT

Sunday: **closed**

Address



Harbour Towne Marina, 850 NE 3rd St,
STE 213, Dania, FL 33004