

HALLELUJAH — PRINCESS YACHTS



Судостроитель: PRINCESS YACHTS

Год постройки: 2019

Модель: Моторная яхта

Цена: **ЦЕНА ЯХТЫ ПО ЗАПРОСУ**

Местонахождение: Cyprus

Длина общая: 100' 4" (30.56m)

Ширина: 22' 9" (6.92m)

Мин. осадка: 6' 9" (2.05m)

Крейс. скорость: 13 Kts. (15 MPH)

Макс. скорость: 22 Kts. (25 MPH)

Купить HALLELUJAH — PRINCESS YACHTS а также выбрать подходящую вам яхту из нашего каталога яхт вам поможет опытный яхтенный брокер Андрей Шестаков. На сегодняшний день компания Shestakov Yacht Sales Inc. имеет большое количество яхт в собственном списке продаж, а также тесно сотрудничает со всеми крупными яхтенными производителями по всему миру.

Для того чтобы купить яхту HALLELUJAH — PRINCESS YACHTS а также проконсультироваться по любому вопросу связанному с покупкой, продажей, чартером яхт позвоните по телефону **+7(918)465-66-44**.

ОГЛАВЛЕНИЕ

| | |
|-------------------------------|----|
| ОГЛАВЛЕНИЕ | 2 |
| ХАРАКТЕРИСТИКИ | 5 |
| Обзор | 5 |
| Основная информация | 5 |
| Размеры | 5 |
| Скорость, вместимость и масса | 6 |
| Размещение | 6 |
| Корпус и палуба | 6 |
| Информация о двигателе | 6 |
| ПОДРОБНОЕ ОПИСАНИЕ | 7 |
| SPECIFICATION | 7 |
| ENGINES & DRIVE | 7 |
| HYDRAULICS | 7 |
| STABILISATION | 7 |
| CERTIFICATION/COMPLIANCE | 8 |
| INTERIOR FURNITURE | 8 |
| HULL COLOUR | 8 |
| INTERIOR FLOORING | 8 |
| LAYOUT | 8 |
| Galley | 9 |
| BATHROOMS | 9 |
| DECK HARDWARE | 10 |
| ELECTRICAL | 10 |
| AUDIO VISUAL & COMMUNICATIONS | 10 |
| NAVIGATION | 11 |
| ACCESSORIES CUTLERY | 11 |
| CUSTOM MOSAICS | 12 |
| CUSHION SCHEME | 12 |

| | |
|--|----|
| LINEOUT | 13 |
| TENDER | 13 |
| Исключения | 13 |
| Отказ от ответственности | 13 |
| ФОТОГРАФИИ | 14 |
| PRINCESS 30M - Exterior | 14 |
| PRINCESS 30M - Saloon | 14 |
| PRINCESS 30M - Saloon | 14 |
| PRINCESS 30M - Saloon | 14 |
| PRINCESS 30M - Served | 14 |
| PRINCESS 30M - Galley | 14 |
| PRINCESS 30M - Galley | 15 |
| PRINCESS 30M - Aft Port VIP Cabin | 15 |
| PRINCESS 30M - Aft Port VIP Cabin | 15 |
| PRINCESS 30M - Aft Starboard VIP Cabin | 15 |
| PRINCESS 30M Aft Starboard VIP Cabin Bathroom | 15 |
| PRINCESS 30M - Aft Starboard VIP Cabin | 15 |
| PRINCESS 30M - Cabin | 16 |
| PRINCESS 30M - Forward Port Stateroom | 16 |
| PRINCESS 30M - Forward Port Stateroom | 16 |
| PRINCESS 30M - Forward Port Stateroom Bathroom | 16 |
| PRINCESS 30M - Wheel House | 16 |
| PRINCESS 30M - Lobby | 16 |
| PRINCESS 30M - Master Stateroom | 17 |
| PRINCESS 30M - Master Stateroom | 17 |
| PRINCESS 30M - Master Stateroom | 17 |
| PRINCESS 30M Lobby | 17 |
| PRINCESS 30M - Master Stateroom | 17 |
| PRINCESS 30M - Master Stateroom Bathroom 1b | 17 |

| | |
|-------------------------|-----------|
| Princess 30M - Exterior | 18 |
| PRINCESS 30M - Exterior | 18 |
| PRINCESS 30M - Exterior | 18 |
| Princess 30M - Exterior | 18 |
| PRINCESS 30M - Exterior | 18 |
| PRINCESS 30M - Exterior | 18 |
| PRINCESS 30M - Exterior | 19 |
| PRINCESS 30M - Exterior | 19 |
| PRINCESS 30M - Exterior | 19 |
| PRINCESS 30M - Exterior | 19 |
| PRINCESS 30M - Exterior | 19 |
| Pro 30m | 19 |
| Fly 30m | 19 |
| Main 30m | 19 |
| low 30m | 19 |
| КОНТАКТЫ | 20 |
| Контактная информация | 20 |
| Телефоны | 20 |
| Время работы | 20 |
| Адрес | 20 |

ХАРАКТЕРИСТИКИ

Обзор

HIGHLIGHTS: 5 CABIN LAYOUT - CUSTOM HULL & HARDTOP COLOUR - RINA & RYA CLASS CERTIFICATES - TRAC STABILIZER - TURBO JET TENDER - HARMAN KARDON SOUND SYSTEM - EXTRA DIESEL TANK FOR LONG RANGE OF 1650 Nm at 1000 RPM

2019 PRINCESS YACHT 30M HALLELUJAH is a yacht for sale located in Limassol, Cyprus. Experience one of the most luxurious raised pilothouse yachts in the world. Her purposeful, distinctive design and custom color are unique. The flybridge is invitingly vast accommodating sun loungers, sofas, a dining area, and a wet bar. Featuring a contemporary interior by the Princess Design Studio, Hallelujah's light and spacious main deck saloon, with its large seating area and dining table seating up to ten, is the perfect space to entertain. Up to ten guests can be accommodated within five en suite cabins, including the main deck master benefiting from uninterrupted vistas of the most breathtaking surroundings and expansive skylight. Contact us today for more information or schedule a viewing.

Основная информация

| | |
|------------------------------------|------------------------------|
| Тип судна: Моторная яхта | Подкатегория: M Class |
| Модельный год: 2019 | Год постройки: 2019 |
| Страна: Cyprus | Верх: Hardtop |
| Открытая палуба мостика: Да | Кубрик: Да |

Размеры

| | |
|--------------------------------------|-------------------------------|
| Длина общая: 100' 4" (30.56m) | Ширина: 22' 9" (6.92m) |
| Мин. осадка: 6' 9" (2.05m) | |

Скорость, вместимость и масса

Крейс. скорость: 13 Kts. (15 MPH)

Макс. скорость: 22 Kts. (25 MPH)

Водоизмещение: 242508.4882 Pounds

Чистый вес: 162 Pounds

Вместимость воды: 426.373691928
Gallons

Вместимость сточного бака:
138.161983196 Gallons

Объем топливного бака: 3830.494754
Gallons

Размещение

Всего кают: 5

Спальные места: 10

Всего ком. состава: 6

Спальных мест экипажа: 5

Корпус и палуба

Материал корпуса: GRP

Комплектация корпуса: Planing

Цвет корпуса: Awl Craft SE Blue L5081

Дизайнер экстерьера: Olesinski

Дизайнер интерьера: Princess Design
Studio

Информация о двигателе

Двигатели: 2

Производитель: MTU

Модель: 16V 2000 M86

Тип двигателя: Inboard

Тип топлива: Diesel

ПОДРОБНОЕ ОПИСАНИЕ

SPECIFICATION

HIGHLIGHTS: 5 CABIN LAYOUT - CUSTOM HULL & HARDTOP COLOUR - RINA & RYA CLASS CERTIFICATES - TRAC STABILIZER - TURBO JET TENDER - HARMAN KARDON SOUND SYSTEM - EXTRA DIESEL TANK FOR LONG RANGE OF 1650 Nm at 1000 RPM

2019 PRINCESS YACHT 30M HALLELUJAH is a yacht for sale located in Limassol, Cyprus. Experience one of the most luxurious raised pilothouse yachts in the world. Her purposeful, distinctive design and custom colour are unique. The flybridge is invitingly vast accommodating sun loungers, sofas, a dining area, and a wet bar. Featuring a contemporary interior by the Princess Design Studio, Hallelujah's light and spacious main deck saloon, with its large seating area and dining table seating up to ten, is the perfect space to entertain. Up to ten guests can be accommodated within five en suite cabins, including the main deck master benefiting from uninterrupted vistas of the most breath-taking surroundings and expansive skylight. Contact us today for more information or schedule a viewing.

ENGINES & DRIVE

- Twin MTU 16V 2000 M86 (2 x 2217mhp)
- Extended range fuel tank (additional 2,300 litres to give 14,500 liters total)
- Trailing pumps for engine gearboxes (ensures gearbox that is not in use is properly lubricated)
- Wasp oil change out unit to cover engines, gearboxes & generators
- Remote control for engines/thrusters with a plug-in point on either side of the wheelhouse (MTU engines only)

HYDRAULICS

- A TRAC hydraulic system combining a fully-proportional speed-controlled bow & stern thruster and windlass system is supplied as standard. Each engine drives its own hydraulic pump with cross-connections allowing any hydraulic systems to be supplied from either engine.

STABILISATION

- TRAC 12 X Fin stabilizer system to provide stabilization underway and also zero-speed stabilization. An additional electro-hydraulic motor powers the system for zero speed stabilization when the main engines are shut down.

CERTIFICATION/COMPLIANCE

- Craft built to MCA (Small Commercial Vessel Regulations MGN280(M)) Category 2 classification and including all safety equipment (i.e. to charter specification)
- Greek Charter Licence

INTERIOR FURNITURE

- Alba Oak interior wood satin finish (with light oak interior floors)

HULL COLOUR

- Hull painted with Awl Craft SE color to be Blue L5081
- Hardtop painted with Awl Craft SE color to be Crystal Silver

INTERIOR FLOORING

- Served, helm and upper lobby are fitted with timber flooring as standard
- Saloon/dining, guest cabins, lower lobby and crew cabins are fitted with carpet as standard
- Crew lobby and galley are fitted with high wear vinyl safety flooring as standard

LAYOUT

- 5 cabin guest layout incorporating two aft VIP staterooms on the lower deck.
- (N.B Saloon dining table to seat up to 10 persons with 2 additional chairs provided)
- Port forward staterooms (in lower accommodation) have single beds with a powered sliding mechanism to convert to double bed
- The standard saloon layout comprises an L-shaped sofa with two armchairs and a rectangular coffee table
- Electrically operated sliding door between the dining area and main lobby
- Standard flybridge layout comprises 'L' shaped seating to port with 2 x Dedon Lounge coffee tables. 'U' shaped seating to starboard dining table (removable centre section) and 2 x Zidz Carver chairs
- Dedon Tango side tables with glass tops
- Saloon starboard side sliding doors in place of full-height window
- Starboard forward staterooms (in lower accommodation) have fixed single beds
- Alternative saloon layout with 2 x three-seater sofas (one fitted forward and one to port side), two armchairs and circular coffee table
- Low level seating stools (2)
- Wheelhouse helm seat with footrest and electrical adjustment in lieu

- Dining area forward bulkhead feature panel full width clear mirror panel with accent lighting feature
- Rampur Grey carpet in the saloon, lower deck cabins, lower lobby & staircase
- Rampur Pearl carpet in the master stateroom
- Dining area sideboard unit countertops in MINK quartz in place of standard
- White Wenge marble
- Master stateroom breakfast table in Alba Oak Satin finish on top with the edge nosing painted with a color matching the Alba Oak
- 2 Dedon Tango beach chairs (flybridge sun loungers)
- All chair/stool legs for the 2 standard SAVOY vanity chairs in the lower aft cabins & 2 standard SAVOY vanity stools in the lower forward cabins
- Mystery White marble used in all standard stone locations throughout the yacht (with the exception of galley & servery)
- Alba Haze floors installed in main lobby, servery & wheelhouse areas (standard location for timber flooring)
- Saloon dining table top to be Mink quartz in place of standard Macassar veneer
- Custom sun-bathing area on the flybridge
- Lower lobby feature clear mirror panels
- Sound Insulation

Galley

- Standard Galley appliances consists Miele single oven
- Miele hob and extractor
- Miele microwave combination oven
- Miele full-size dishwasher
- Miele built-in coffee machine
- A 2 x full-height fridge freezers (296 + 100 lts each)
- An ice maker and wine cooler located in the servery area
- Washing appliances consists: separate Miele washing machine and tumble dryer in crew area
- Galley and servery worktops are in Black Quartz as standard
- Fit trash compactor in the galley
- Galley & crew area flooring (with exception of the servery) is Vintage Cherry Altro

BATHROOMS

- Owner and guest bathrooms incorporate heated towel rails and have marble or granite worktops and floors
- Heated towel rails to all crew bathrooms (2 in total)

- Crew bathroom worktops and floors are solid surface Koko white

DECK HARDWARE

- Flybridge GRP hardtop with the electrically operated opening centre section in white fabric
- Side mount stairway with hull fittings port and starboard and with storage in the starboard side deck
- Sun awning covering area 4m aft of flybridge hardtop (featuring carbon fibre poles, stainless steel fixtures, lightweight hydrophobic canvas top with hidden pulley system)
- Diesel Fuel fill up a system for jet rib
- 2 x bar stools for flybridge wet bar

ELECTRICAL

- Continental 220v/240v sockets
- Both generators upgraded to 50kW (from 40kW standard)
- Bow docking lights (stern docking lights are standard)
- Underwater transom lights (Ocean LED XFM 250) Lights to be BLUE
- Dual anchor chain counters at the upper and lower helm
- Drawer fridge (100 ltr) fitted in flybridge wet bar
- Twin Lava Brick BBQ's in place of standard twin grill BBQ's
- Wine cooler for 48 bottles is standard
- Icemaker fitted in cockpit bar (icemakers are fitted as standard in the servery and in flybridge bar)

AUDIO VISUAL & COMMUNICATIONS

- 32" LED TV with MS-AV700i radio/MP3/DVD fitted in crew mess area on forwarding bulkhead forward bulkhead
- Master and full-beam VIP staterooms (each) – additional speakers located in headlining of bathroom/shower area linked to the stateroom via a local control - ONLY MASTER
- Foredeck area has waterproof speakers and local control (linked to saloon system)
- A marine router acting as a single control point for Sat phone (when selected), 3G/4G services, and marine Wi-Fi networks. Easily accessed and controlled via a web browser on any connected device, the router allows the owner and/or crew to control and restrict internet connections and access to the Satphone. Wi-Fi coverage is provided throughout the vessel including crew and external guest areas.
- GOST Phantom security alarm system with motion sensor coverage of aft saloon doors, side doors, and wheelhouse. Control located in the wheelhouse with strobe light and siren. Arming/disarming system with remote control key fob Standard CCTV system with monitoring at lower helm comprises; two cameras fitted in the engine room and one fitted in

the cockpit facing aft (3 in total) 89cm Dummy dome x 2

- Run COAX cabling from the standard dome locations on the mast down to standard locations for KVH antenna control equipment and satellite TV receivers

NAVIGATION

- Standard navigation equipment incorporates a “glass bridge” display with 2 x Raymarine 15.4” gS series high-definition screens in the wheelhouse with remote control and 1 x 15.4” gS series screen on the flybridge
- Wheelhouse screens display radar, chart plotter, GPS, and CCTV (engine instrumentation are displayed at both control positions via HD screens)
- Raymarine 4ft/4kw open array HD colour radar is also a standard supply
- Additional Raymarine 15.4” gS series screen on flybridge (totaling 2 screens)
- Raymarine 15.4” gS series screen fitted in the crew mess
- Radar upgrade to Raymarine 4ft/12kw open array (HD colour)
- Raymarine AIS Class B transponder

ACCESSORIES CUTLERY

- A set of day stainless steel cutlery (7-piece PARIS) is supplied as standard (10 place setting) comprising: 1 x table knife & fork, 1 x dessert spoon, 1 x dessert knife & fork, 1 x soup spoon & 1 x teaspoon
- Additional place setting (7 pieces) of PARIS stainless steel day cutlery without storage
- A set of evening stainless steel cutlery (8-piece IMAGINE) supplied as standard (10 place setting) comprising: 1 x table knife & fork, 1 x dessert spoon, 2 x dessert knives & forks & 1 x teaspoon. The following serving ware is also supplied comprising: 3 x serving spoons and 3 x serving forks
- Additional place setting of (8 pieces) IMAGINE stainless steel evening cutlery Upgrade evening set to silver plated (in place of standard stainless-steel cutlery) 8-piece IMAGINE (10 place setting) comprising: 1 x table knife & fork, 1 x dessert spoon, 2 x dessert knives & forks & 1 x teaspoon. The following serving ware is also supplied comprising: 4 x serving spoons and 4 x serving forks
- Additional place setting of (8 piece) IMAGINE silver-plated evening cutlery Optional crew cutlery (6-piece PARIS) - (6 place setting) comprising: 1 x table knife & fork, 1 x dessert spoon, 1 x dessert knife & fork & 1 x tea spoon

CHINA

- A set of day crockery with Princess logo (5-piece) is supplied as standard (10 place setting) comprising: 1 x dinner plate, 1 x side plate, 1 x bowl, 1 x teacup, and saucer
- Additional day crockery place setting (5-piece) with Princess logo without storage
- A set of evening crockery (6-piece) Sous Le Soleil Platinum is supplied as standard (10 place setting) comprising: 1 x dinner plate, 1 x side plate, 1 x bowl, 1 x teacup, and saucer &

1 x cake plate. The following serving ware is also supplied comprising: creamer, sugar bowl, sauceboat & stand, and 2 x serving bowls

- Additional evening crockery place setting (6-piece) Sous Le Soliel Platinum without storage
- Optional crew crockery - Princess China (4 piece) 1 place setting comprising: 1 x dinner plate, 1 x dessert plate, 1 x bowl, 1 x mug

GLASSES

- A set of day LUCREZIA crystal uncut glasses (2-piece) is supplied as standard (10 place setting) comprising: 1 x wine glass & 1 x tumbler
- Additional LUCREZIA uncut crystal glass set (2-piece) without storage
- A set of evening LUCREZIA cut crystal glasses (4-piece) is supplied as standard (10 place setting) comprising: 1 x wine glass, 1 x champagne flute, 1 x tumbler & 1 x highball. In addition, for the Master Stateroom, a 3- piece (2 place setting set) of LUCREZIA cut crystal glasses are supplied as standard comprising: 1 x champagne flute, 1 x tumbler & 1 x highball
- Additional LUCREZIA cut crystal glass set (4-piece) without storage
- A set of crew glassware is supplied as standard (6 place settings) comprising; 1 x tumbler

CUSTOM MOSAICS

- Lower aft cabin bathrooms have Siminetti Natural (Freshwater A range) mosaics in the standard locations (forward and aft shower bulkheads) - Grout to be 100 Bianco White
- Master stateroom bathroom to have Siminetti Anthracite (Freshwater B range) mosaics in the standard locations (forward and aft shower bulkheads) - Grout to be 114 Anthracite
- Lower forward guest cabin bathrooms to have KARASIMBI mosaics in the standard locations (all shower bulkheads)

CUSHION SCHEME

- Yacht specific cushions scheme:
- Exterior Cushions: Bali Grass - Oasis 235/05; Haze - Frost; Robert Allen diamond Vista Navy
- Cushion for Dedon Tango exterior dining chairs (8) in movida fabric
- 2 custom cushions for Dedon Tango exterior beach chairs in Movida Fabric
- Custom cushion for Dedon Tango exterior dining chairs (8) in Extex Haze Frost - Marina Mill fabric
- Custom cushion for Dedon Tango beach chairs (flybridge sunloungers) (2) in Extex Haze Frost – Marina
- Mill fabric

LINEOUT

- Met Ice is used for cockpit overhead panels
- Pewter Quartz leather to be used for panels above and below mirror feature on dining area bulkhead
- White PVC exterior covers
- Quartz Linen carpet in crew cabins

TENDER

- Williams DJ445 available under separate negotiation

Исключения

При продаже яхты исключаются личные вещи владельца.

Отказ от ответственности

Компания предоставляет описание судна или яхты добросовестно, но не может гарантировать точность этой информации, а также не ручается за техническое состояние. Покупатель должен проинструктировать своих агентов или оценщиков исследовать представленную информацию более подробно, по собственному желанию. Продажа судна или яхты, изменение цены или снятие с продажи будет происходить без предварительного уведомления.

ФОТОГРАФИИ

PRINCESS 30M - Exterior



PRINCESS 30M - Saloon



PRINCESS 30M - Saloon



PRINCESS 30M - Saloon



PRINCESS 30M - Servery



PRINCESS 30M - Galley



PRINCESS 30M - Galley



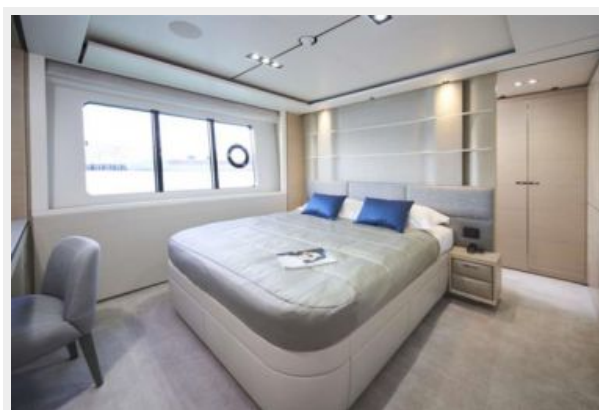
PRINCESS 30M - Aft Port VIP Cabin



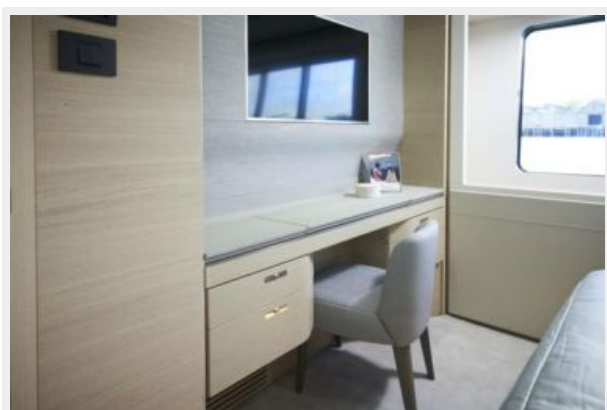
PRINCESS 30M - Aft Port VIP Cabin



PRINCESS 30M - Aft Starboard VIP Cabin



PRINCESS 30M - Aft Starboard VIP Cabin



**PRINCESS 30M Aft Starboard VIP Cabin
Bathroom**



PRINCESS 30M - Cabin



PRINCESS 30M - Forward Port Stateroom



PRINCESS 30M - Forward Port Stateroom



PRINCESS 30M - Forward Port Stateroom Bathroom



PRINCESS 30M - Wheel House



PRINCESS 30M - Lobby



PRINCESS 30M - Master Stateroom



PRINCESS 30M - Master Stateroom



PRINCESS 30M - Master Stateroom



PRINCESS 30M Lobby



PRINCESS 30M - Master Stateroom



**PRINCESS 30M - Master Stateroom
Bathroom 1b**



PRINCESS 30M - Exterior



Princess 30M - Exterior



Princess 30M - Exterior



PRINCESS 30M - Exterior



PRINCESS 30M - Exterior



PRINCESS 30M - Exterior



PRINCESS 30M - Exterior



PRINCESS 30M - Exterior



PRINCESS 30M - Exterior



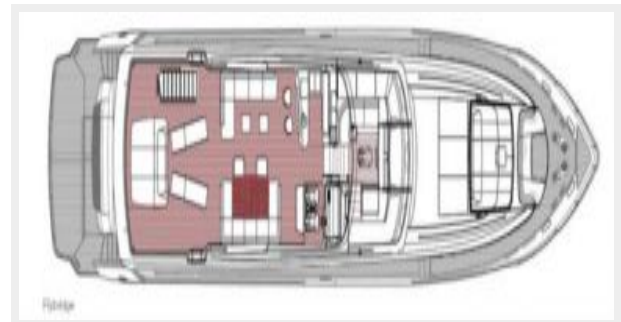
PRINCESS 30M - Exterior



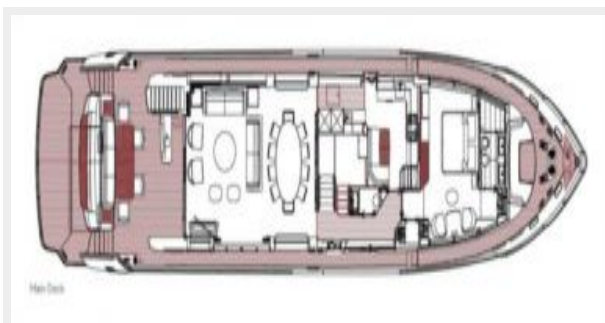
Pro 30m



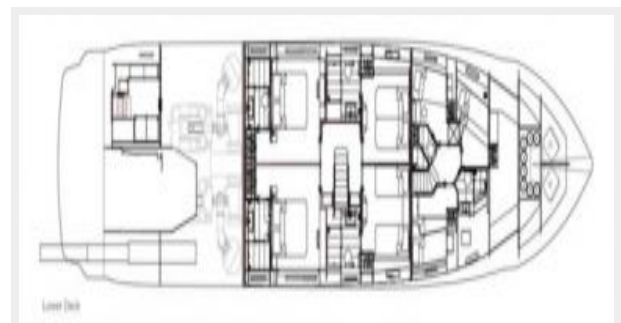
Fly 30m



Main 30m



low 30m



КОНТАКТЫ

Андрей Шестаков (Andrey Shestakov) – ведущий яхтенный брокер отдела продаж яхт и судов компании Shestakov Yacht Sales Inc. Официальный представитель Shestakov Yacht Sales Inc. для русскоговорящих клиентов в центральном офисе компании в Майами/Форт Лодердейл/Флорида/США.

Контактная информация

Email: andrey@shestakovyachtsales.com

Web: shestakovyachtsales.com

Телефоны

Краснодарский край: **+7(918)465-66-44**

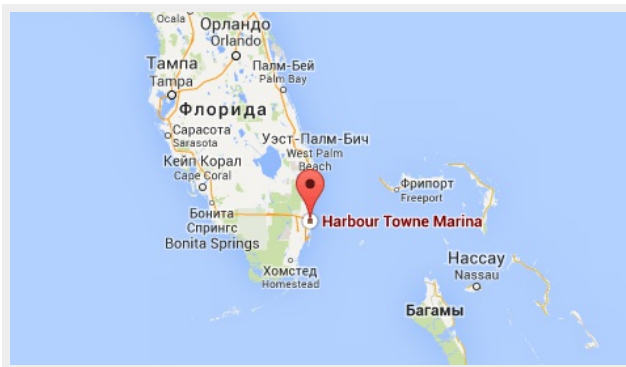
США, Майами, Флорида: **+1(954)274-4435**

Время работы

Понедельник – Суббота: **9:00 - 21:00**
EDT

Воскресенье: **Закрето**

Адрес



Harbour Towne Marina, 850 NE 3rd St,
STE 213, Dania, FL 33004